

WILLIAM EDWARDS
ENGLAND



Prima Showroom and Design Center
Available by Appointment
602-373-2325
4430 N. Civic Center Plaza, Suite #103, Scottsdale, AZ 85251

VIII EDITION



CONTENTS

Introduction	6	Accessories	42
Signature Collection	10	Bespoke Commissions	44
Diamond	12	Whiteware Collection	54
Jewel	14	Classic White	56
Burnished Gold	16	Coupe White	60
Reed	18	Snipe Deco	64
Sultan's Garden	20	President & Banqueting	66
Sultan's Garden Blue	22	Miscellaneous	68
Fizz	24	Asian	70
Hive	26	The Company We Keep	72
Duke	28	Bone China Care Guide	74
Moresque	30		
Spiro	32		
Gatsby	34		
Flame	36		
Trellis	38		
Frost	40		





THE ART OF PRESENTATION



WILLIAM EDWARDS
ENGLAND

BRITISH DESIGN AND CRAFTSMANSHIP

Since 1993, the William Edwards brand has specialised in the design and manufacturing of fine bone chinaware for both luxury hospitality and retail clients.

Pushing the boundaries of bespoke design by merging traditional techniques with innovation. A beautiful blend of modern luxury, with a passion for shape, design, and traditional British craftsmanship.

The exceptionally skilled team at William Edwards are well known for its competencies in decorating fine ceramics for famous brands across the UK and around the world.

Using only the finest traditional materials and techniques, each piece is expertly designed in Stoke-on-Trent, the heart of England's ceramics industry, in order to create collections used by the best hotels and restaurants worldwide.

AFTERNOON TEA



BANQUETING



ALL DAY DINING



GIFTING/RETAIL



ROOM SERVICE



RESTAURANT




LUXURY TRAVEL



ROYAL SUITE







S I G N A T U R E C O L L E C T I O N

The William Edwards Signature Collections have been created to enhance the tableware experience within your establishment, with a readily available collection of fine bone china, offering a flexible solution to all hospitality F&B outlets.

DIAMOND

SIGNATURE COLLECTION



Plate
AND0101V1 30.0cm (11¾")
Fits Cloche L/S AND0177



Plate
AND0101V2 30.0cm (11¾")
Fits Cloche L/S AND0177



Plate
AND0102 27.5cm (10¾")



Plate
AND0103 22.0cm (8¾")
Fits Large 3-Tier Tea Stand



Plate
AND0104 16.8cm (6½")
Fits Small 3-Tier Tea Stand &
2-Tier Plate Stand



Large Rim Bowl
AND0132
28.0cm x 5.7cm h (11" x 2¼" h)
60.0cl (21oz)
Fits Cloche L/S AND0177



Rim Bowl
AND0105
22.0cm (8¾") 22.5cl (8oz)



Bowl
AND0332
14.5cm x 5.2cm h (5¾" x 2" h)
35.0cl (12⅓oz)



Condiment Pot
AND0249
6.5cm x 3.3cm h (2½" x 1½" h)
5.0cl (1¾oz)



Tea Cup Can
AND0110
6.0cm h (2½" h) 20.0cl (7oz)
Saucer
AND0211 16.0cm (6⅓")
Fits AND0110



Coffee Can
AND0112
6.0cm h (2½" h) 10.0cl (3½oz)
Espresso Saucer
AND0152 12.0cm (4¾")
Fits AND0112



Mug
AND0281
9.0cm h (3½" h) 35.0cl (12⅓oz)



Connoisseur Beverage Pot
AND0542
11.1cm h (4⅜" h) 45.0cl (15¼oz)
Includes Teapot Infuser



Oval Teapot 2 Cup
AND0337
10.0cm h (4" h) 55.0cl (19⅓oz)



Milk Jug S/S
AND0340
9.0cm h (3½" h) 22.0cl (7¾oz)



Oval Sugar
AND0335
9.0cm h (3½" h) 22.5cl (8oz)
AND0341 Oval Sugar Lid



Rectangle Tray L/S
AND0136
34.0cm x 15.0cm (13½" x 6")



AMETHYST



Plate
82116AND0478
31.0cm (12¼")

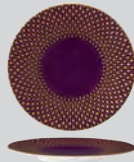


Plate
82116AND0472
15.0cm (6")



Tea Cup Can Coupe
82116AND0110
H 6.0cm (2½") 20.0cl (7oz)
Saucer
82116AND0211
16.0cm (6⅓") Fits AND0110



Coffee Can
82116AND0112
H 6.0cm (2½") 10.0cl (3½oz)
Espresso Saucer
82116AND0152
12.0cm (4¾") Fits AND0112

COBALT



Plate
82117AND0478
31.0cm (12¼")

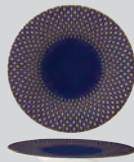


Plate
82117AND0472
15.0cm (6")



Tea Cup Can Coupe
82117AND0110
H 6.0cm (2½") 20.0cl (7oz)
Saucer
82117AND0211
16.0cm (6⅓") Fits AND0110



Coffee Can
82117AND0112
H 6.0cm (2½") 10.0cl (3½oz)
Espresso Saucer
82117AND0152
12.0cm (4¾") Fits AND0112

ROSE



Plate
82118AND0478
31.0cm (12¼")

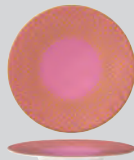


Plate
82118AND0472
15.0cm (6")



Tea Cup Can Coupe
82118AND0110
H 6.0cm (2½") 20.0cl (7oz)
Saucer
82118AND0211
16.0cm (6⅓") Fits AND0110



Coffee Can
82118AND0112
H 6.0cm (2½") 10.0cl (3½oz)
Espresso Saucer
82118AND0152
12.0cm (4¾") Fits AND0112

TOPAZ

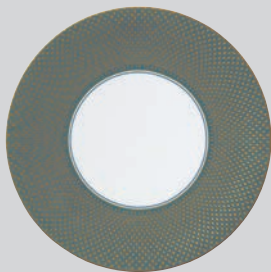
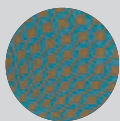


Plate
82119AND0478
31.0cm (12¼")

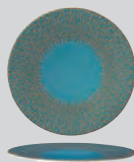


Plate
82119AND0472
15.0cm (6")



Tea Cup Can Coupe
82119AND0110
H 6.0cm (2½") 20.0cl (7oz)
Saucer
82119AND0211
16.0cm (6⅓") Fits AND0110



Coffee Can
82119AND0112
H 6.0cm (2½") 10.0cl (3½oz)
Espresso Saucer
82119AND0152
12.0cm (4¾") Fits AND0112



BURNISHED GOLD

SIGNATURE COLLECTION



Plate
AND0101 30.0cm (11¾")
Fits Cloche L/S AND0177



Plate
AND0102 27.5cm (10¾")



Plate
AND0103 22.0cm (8¾")
Fits Large 3-Tier Tea Stand



Plate
AND0104 16.8cm (6½")
Fits Small 3-Tier Tea Stand &
2-Tier Plate Stand



Large Rim Bowl
AND0132
28.0cm x 5.7cm h (11" x 2¼" h)
60.0cl (21oz) Fits Cloche L/S AND0177



Rim Bowl
AND0105
22.0cm (8¾") 22.5cl (8oz)



Bowl
AND0332
14.5cm x 5.2cm h (5¾" x 2" h)
35.0cl (12½oz)



Condiment Pot
AND0249
6.5cm x 3.3cm h (2½" x 1½" h)
5.0cl (1¾oz)



Tea Cup Footed
AND0106
7.0cm h (2¾" h) 22.0cl (8oz)
Tea Saucer/Soup Stand
AND0107 16.0cm (6½") Fits AND0106



Espresso Cup Footed
AND0145
5.6cm h (2¼" h) 9.0cl (3oz)
Espresso Saucer
AND0146 12.0cm (4¾") Fits AND0145



Mug
AND0281
9.0cm h (3½" h) 35.0cl (12½oz)



Teapot 4 Cup
AND0415
16.5cm h (6½" h) 80.0cl (28oz)



Milk Jug
AND0120
10.5cm h (4¼" h) 25.0cl (9oz)



Covered Sugar
AND0119
11.5cm (4½") 25.0cl (9oz)



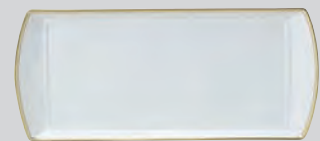
Tea For One Cup
AND0411A
6.0cm h (2½" h) 26.0cl (9oz)
Tea For One Saucer
AND0169 14.5cm (5¾") Fits AND0411A



Tea For One Teapot
AND0411B
12.4cm h (5" h) 46.0cl (16oz)



Tea For One Set
AND0411
Teapot, Teacup & Saucer



Rectangle Tray L/S
AND0136
34.0cm x 15.0cm (13½" x 6")





Coupe Plate
AND0419 30.0cm (11¾")



Coupe Plate
AND0244 27.0cm (10½")



Coupe Plate
AND0163 21.0cm (8¼")
Fits Large 3-Tier Tea Stand



Coupe Plate
AND0421 16.5cm (6½")
Fits Small 3-Tier Tea Stand &
2-Tier Plate Stand



Bowl
AND0441
24.0cm (9½") 59.7cl (21oz)



Bowl
AND0332
14.5cm x 5.2cm h (5¾" x 2" h)
35.0cl (12⅓oz)



Condiment Pot
AND0249
6.5cm x 3.3cm h (2½" x 1½" h)
5.0cl (1¾oz)



Tea Cup Footed
AND0106
7.0cm h (2¾" h) 22.0cl (8oz)
Tea Saucer/Soup Stand
AND0107 16.0cm (6½") Fits AND0106



Espresso Cup Footed
AND0145
5.6cm h (2¼" h) 9.0cl (3oz)
Espresso Saucer
AND0146 12.0cm (4¾") Fits AND0145



Mug
AND0281
9.0cm h (3½" h) 35.0cl (12⅓oz)



Teapot 4 Cup
AND0415
16.5cm h (6½" h) 80.0cl (28oz)



Milk Jug
AND0120
10.5cm h (4⅙" h) 25.0cl (9oz)



Covered Sugar
AND0119
11.5cm (4½") 25.0cl (9oz)



Tea For One Cup
AND0411A
6.0cm h (2½" h) 26.0cl (9oz)
Tea For One Saucer
AND0169 14.5cm (5¾") Fits AND0411A



Tea For One Teapot
AND0411B
12.4cm h (5" h) 46.0cl (16oz)



Tea For One Set
AND0411
Teapot, Teacup & Saucer



Rectangle Tray L/S
AND0136
34.0cm x 15.0cm (13½" x 6")



SULTAN'S GARDEN

SIGNATURE COLLECTION



Coupe Plate
AND0244 27.0cm (10½")



Coupe Plate
AND0163 21.0cm (8¼")
Fits Large 3-Tier Tea Stand



Coupe Plate
AND0421V1 16.5cm (6½")
Fits Small 3-Tier Tea Stand &
2-Tier Tea Stand



Coupe Plate
AND0421V2 16.5cm (6½")
Fits Small 3-Tier Tea Stand &
2-Tier Plate Stand



Butter Dish
AND0295 11.0cm (4½")
Fits Cloche S/S AND0543



Oval Tray
AND0322 35.0cm (13¾")



Large Bowl
AND0150
23.0cm (9¼") 2Ltr (70oz)



Bowl
AND0441
24.0cm (9½") 59.7cl (21oz)



Bowl
AND0332
14.5cm x 5.2cm h (5¾" x 2" h)
35.0cl (12¼oz)



Condiment Pot
AND0249
6.5cm x 3.3cm h (2½" x 1½" h)
5.0cl (1¾oz)



Tea Cup Can
AND0110
6.0cm h (2½" h) 20.0cl (7oz)
Saucer
AND0211 16.0cm (6¼")
Fits AND0110



Coffee Can V1
AND0112V1
6.0cm h (2½" h) 10.0cl (3½oz)
Espresso Saucer V1
AND0152V1 12.0cm (4¾")
Fits AND0112V1/V2



Coffee Can V2
AND0112V2
6.0cm h (2½" h) 10.0cl (3½oz)
Espresso Saucer V2
AND0152V2 12.0cm (4¾")
Fits AND0112V1/V2



Mug V1
AND0281V1
9.0cm h (3½" h) 35.0cl (12¼oz)



Mug V2
AND0281V2
9.0cm h (3½" h) 35.0cl (12¼oz)



Oval Teapot 2 Cup
AND0337
10.0cm h (4" h) 55.0cl (19¼oz)



Milk Jug S/S
AND0340
9.0cm h (3½" h) 22.0cl (7¾oz)



Oval Sugar
AND0335
9.0cm h (3½" h) 22.5cl (8oz)
AND0341 Oval Sugar Lid



Tea For One Cup
AND0411A
6.0cm h (2½" h) 26.0cl (9oz)
Tea For One Saucer
AND0169 14.5cm (5¾")
Fits AND0411A



Tea For One Teapot
AND0411B
12.4cm h (5" h) 46.0cl (16oz)



Tea For One Set
AND0411 Comprised of
AND0411B, AND0411A, AND0169




SULTANS GARDEN
WILLIAM EDWARDS
ENGLAND
Fine Bone China



Coupe Plate
AND0244 27.0cm (10½")



Coupe Plate
AND0163 21.0cm (8¼")
Fits Large 3-Tier Tea Stand



Coupe Plate
AND0421V1 16.5cm (6½")
Fits Small 3-Tier Tea Stand &
2-Tier Plate Stand



Coupe Plate
AND0421V2 16.5cm (6½")
Fits Small 3-Tier Tea Stand &
2-Tier Plate Stand



Butter Dish
AND0295 11.0cm (4½")
Fits Cloche S/S AND0543



Oval Tray
AND0322 35.0cm (13¾")



Large Bowl
AND0150A
23.0cm (9⅛") 2Ltr (70oz)



Bowl
AND0441
24.0cm (9½") 59.7cl (21oz)



Bowl
AND0332
14.5cm x 5.2cm h (5¾" x 2" h)
35.0cl (12⅓oz)



Condiment Pot
AND0249
6.5cm x 3.3cm h (2½" x 1½" h)
5.0cl (1¾oz)



Tea Cup Can
AND0110
6.0cm h (2½" h) 20.0cl (7oz)
Saucer
AND0211 16.0cm (6⅓")
Fits AND0110



Coffee Can V1
AND0112V1
6.0cm h (2½" h) 10.0cl (3½oz)
Espresso Saucer V1
AND0152V1 12.0cm (4¾")
Fits AND0112V1/V2



Coffee Can V2
AND0112V2
6.0cm h (2½" h) 10.0cl (3½oz)
Espresso Saucer V2
AND0152V2 12.0cm (4¾")
Fits AND0112V1/V2



Mug V1
AND0281V1
9.0cm h (3½" h) 35.0cl (12⅓oz)



Mug V2
AND0281V2
9.0cm h (3½" h) 35.0cl (12⅓oz)



Oval Teapot 2 Cup
AND0337
10.0cm h (4" h) 55.0cl (19⅓oz)
AND0337L Teapot Lid



Milk Jug S/S
AND0340
9.0cm h (3½" h) 22.0cl (7¾oz)



Oval Sugar
AND0335
9.0cm h (3½" h) 22.5cl (8oz)
AND0341 Oval Sugar Lid



Tea For One Cup
AND0411A
6.0cm h (2½" h) 26.0cl (9oz)
Tea For One Saucer
AND0169 14.5cm (5¾")
Fits AND0411A



Tea For One Teapot
AND0411B
12.4cm h (5" h) 46.0cl (16oz)
AND0411BL Teapot Lid



Tea For One Set
AND0411 Comprised of
AND0411B, AND0411A, AND0169



FIZZ - NEW

SIGNATURE COLLECTION



Plate V1
AND0101 30.0cm (11¾")
Fits Cloche L/S AND0177



Plate
AND0101V2 30.0cm (11¾")
Fits Cloche L/S AND0177



Plate
AND0102 27.5cm (10¾")



Plate
AND0103 22.0cm (8¾")
Fits Large 3-Tier Tea Stand



Plate
AND0104 16.8cm (6½")
Fits Small 3-Tier Tea Stand &
2-Tier Plate Stand



Large Rim Bowl
AND0132
28.0cm x 5.7cm h (11" x 2¼" h)
60.0cl (21oz)
Fits Cloche L/S AND0177



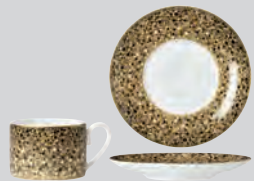
Rim Bowl
AND0105
22.0cm (8¾") 22.5cl (8oz)



Bowl
AND0332
14.5cm x 5.2cm h (5¾" x 2" h)
35.0cl (12¼oz)



Condiment Pot
AND0249
6.5cm x 3.3cm h (2½" x 1½" h)
5.0cl (1¾oz)



Tea Cup Can
AND0110
6.0cm h (2½" h) 20.0cl (7oz)
Saucer
AND0211 16.0cm (6⅓")
Fits AND0110



Coffee Can
AND0112
6.0cm h (2½" h) 10.0cl (3½oz)
Espresso Saucer
AND0152 12.0cm (4¾")
Fits AND0112



Mug
AND0281
9.0cm h (3½" h) 35.0cl (12¼oz)



Connoisseur Beverage Pot
AND0542
11.1cm h (4⅜" h) 45.0cl (15¼oz)
Includes Teapot Infuser



Oval Teapot 2 Cup
AND0337
10.0cm h (4" h) 55.0cl (19¼oz)



Milk Jug S/S
AND0340
9.0cm h (3½" h) 22.0cl (7¾oz)



Oval Sugar
AND0335
9.0cm h (3½" h) 22.5cl (8oz)
AND0341 Oval Sugar Lid



Rectangle Tray L/S
AND0136
34.0cm x 15.0cm (13½" x 6")





Plate
AND0101V1 30.0cm (11¾")
 Fits Cloche L/S AND0177



Plate
AND0101V2 30.0cm (11¾")
 Fits Cloche L/S AND0177



Plate
AND0102 27.5cm (10¾")



Plate
AND0103 22.0cm (8¾")
 Fits Large 3-Tier Tea Stand



Plate
AND0104 16.8cm (6½")
 Fits Small 3-Tier Tea Stand &
 2-Tier Plate Stand



Bowl
AND0441
 24.0cm (9½") 59.7cl (21oz)



Bowl
AND0332
 14.5cm x 5.2cm h (5¾" x 2" h)
 35.0cl (12¼oz)



Condiment Pot
AND0249
 6.5cm x 3.3cm h (2½" x 1½" h)
 5.0cl (1¾oz)



Flared Footed Tea Cup
AND0562 177.5cl (6¼oz)
 Tea For One Saucer
AND0169 14.5cm (5¾")
 Fits AND0562



Espresso Cup Footed
AND0145
 5.6cm h (2¼" h) 9.0cl (3oz)
 Espresso Saucer
AND0146 12.0cm (4¾")
 Fits AND0145



Mug
AND0281
 9.0cm h (3½" h) 35.0cl (12¼oz)



Connoisseur Beverage Pot
AND0542
 11.1cm h (4¾" h) 45.0cl (15¼oz)
 Includes Teapot Infuser



Teapot 4 Cup
AND0415
 16.5cm h (6½" h) 80.0cl (28oz)
 Teapot 4 Cup Classic Lid
AND0213 Fits AND0415



Milk Jug
AND0120
 10.5cm h (4¼" h) 25.0cl (9oz)



Covered Sugar
AND0119
 11.5cm (4½") 25.0cl (9oz)
 Covered Sugar Classic Lid
AND0220 Fits AND0119



Tea For One Cup
AND0411A
 6.0cm h (2½" h) 26.0cl (9oz)
 Tea For One Saucer
AND0169 14.5cm (5¾")
 Fits AND0411A



Tea For One Teapot
AND0411B
 12.4cm h (5" h) 46.0cl (16oz)



Rectangle Tray L/S
AND0136
 34.0cm x 15.0cm (13½" x 6")





Narrow Rim Plate
AND0189 30.0cm (11¾")



Narrow Rim Plate
AND0180 27.0cm (10½")



Narrow Rim Plate
AND0181 24.0cm (9½")



Narrow Rim Plate
AND0183 17.0cm (6¾")
Fits Small 3-Tier Tea Stand &
2-Tier Plate Stand



Large Rim Bowl
AND0132
28.0cm x 5.7cm h (11" x 2¼" h)
60.0cl (21oz)
Fits Cloche L/S AND0177



Rim Bowl
AND0105
22.0cm (8¾") 22.5cl (8oz)



Bowl
AND0332
14.5cm x 5.2cm h (5¾" x 2" h)
35.0cl (12⅓oz)



Condiment Pot
AND0249
6.5cm x 3.3cm h (2½" x 1½" h)
5.0cl (1¾oz)



Tea Cup Can
AND0110
6.0cm h (2½" h) 20.0cl (7oz)
Saucer
AND0211 16.0cm (6⅓")
Fits AND0110



Coffee Can
AND0112
6.0cm h (2½" h) 10.0cl (3½oz)
Espresso Saucer
AND0152 12.0cm (4¾")
Fits AND0112



Mug
AND0281
9.0cm h (3½" h) 35.0cl (12⅓oz)



Connoisseur Beverage Pot
AND0542
11.1cm h (4⅓" h) 45.0cl (15¼oz)
Includes Teapot Infuser



Oval Teapot 2 Cup
AND0337
10.0cm h (4" h) 55.0cl (19⅓oz)



Milk Jug S/S
AND0340
9.0cm h (3½" h) 22.0cl (7¾oz)



Oval Sugar
AND0335
9.0cm h (3½" h) 22.5cl (8oz)
AND0341 Oval Sugar Lid



Rectangle Tray L/S
AND0136
34.0cm x 15.0cm (13½" x 6")



MORESQUE

SIGNATURE COLLECTION



Plate
AND0101 30.0cm (11¾")
Fits Cloche L/S AND0177



Plate
AND0102 27.5cm (10¾")



Plate
AND0103 22.0cm (8¾")
Fits Large 3-Tier Tea Stand



Plate
AND0104 16.8cm (6½")
Fits Small 3-Tier Tea Stand &
2-Tier Plate Stand



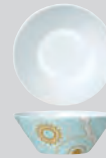
Bowl
AND0473
27.5cm x 6.0cm h (10¾" x 2½" h)
68.2cl (24oz)



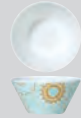
Bowl
AND0512
22.5cm x 6.0cm h (9" x 2½" h)
59.7cl (21oz)



Bowl
AND0474
16.0cm x 6.5cm h (6½" x 2½" h)
34.0cl (12oz)



Bowl
AND0513
11.5cm x 4.0cm (4½" x 1½" h)
19.9cl (7oz)



Bowl
AND0514
8.0cm x 3.5cm h (3⅛" x 1½" h)
11.4cl (4oz)



Tea Cup
AND0515
7.0cm h (2¾" h) 22.0cl (7¾oz)
Tea Saucer
AND0516 15.3cm (6")
Fits AND0515



Espresso Cup
AND0517
6.0cm h (2½" h) 12.0cl (4¼oz)
Espresso Saucer
AND0518 12.0cm (4¾")
Fits AND0517



Mug
AND0523
11.0cm h (4⅓" h) 31.0cl (11oz)



Coffee Pot
AND0531
18.0cm h (7⅓" h) 66.0cl (23¼oz)



Teapot
AND0522
13.5cm h (5⅓" h) 66.0cl (23¼oz)



Jug
AND0521
8.0cm h (3½" h) 22.0cl (7¾oz)



Jug
AND0527
6.0cm h (2½" h) 11.0cl (3¾oz)



Sugar Bowl
AND0519
8.5cm h (3½" h) 20.0cl (7oz)
AND0520 Sugar Bowl Lid



Salt
AND0525 6.5cm h (2½" h)
Pepper
AND0526 6.5cm h (2½" h)



SPIRO

SIGNATURE COLLECTION



Coupe Plate
AND0419 30.0cm (11¾")



Coupe Plate
AND0244 27.0cm (10½")



Coupe Plate
AND0163 21.0cm (8¼")
Fits Large 3-Tier Tea Stand



Coupe Plate
AND0421 16.5cm (6½")
Fits Small 3-Tier Tea Stand & 2-Tier Plate Stand



Bowl
AND0441
24.0cm (9½") 59.7cl (21oz)



Bowl
AND0332
14.5cm x 5.2cm h (5¾" x 2" h)
35.0cl (12⅓oz)



Condiment Pot
AND0249
6.5cm x 3.3cm h (2½" x 1½" h)
5.0cl (1¾oz)



Tea Cup Can
AND0110
6.0cm h (2½" h) 20.0cl (7oz)
Tea Saucer
AND0211 16.0cm (6⅓")
Fits AND0110



Coffee Can
AND0112
6.0cm h (2½" h) 10.0cl (3½oz)
Espresso Saucer
AND0152 12.0cm (4¾")
Fits AND0112



Mug
AND0281
9.0cm h (3½" h) 35.0cl (12⅓oz)



Oval Teapot 2 Cup
AND0337
10.0cm h (4" h) 55.0cl (19⅓oz)



Milk Jug S/S
AND0340
9.0cm h (3½" h) 22.0cl (7¾oz)



Oval Sugar
AND0335
9.0cm h (3½" h) 22.5cl (8oz)
AND0341 Oval Sugar Lid



Tea For One Cup
AND0411A
6.0cm h (2½" h) 26.0cl (9oz)
Tea For One Saucer
AND0169 14.5cm (5¾")
Fits AND0411A



Tea For One Teapot
AND0411B
12.4cm h (5" h) 46.0cl (16oz)



Tea For One Set
AND0411 Comprised of
AND0411B, AND0411A, AND0169



Rectangle Tray L/S
AND0136
34.0cm x 15.0cm (13½" x 6")





Plate
AND0478 31.0cm (12¼")



Plate
AND0480 27.5cm (10¾")



Plate
AND0471 22.0cm (8¾")



Plate
AND0472 15.0cm (6")



Bowl
AND0473
27.5cm x 6.0cm h (10¾" x 2½" h)
68.2cl (24oz)



Bowl
AND0512
22.5cm x 6.0cm h (9" x 2½" h)
59.7cl (21oz)



Bowl
AND0474
16.0cm x 6.5cm h (6½" x 2½" h)
34.0cl (12oz)



Bowl
AND0513
11.5cm x 4.0cm (4½" x 1½" h)
19.9cl (7oz)



Bowl
AND0514
8.0cm x 3.5cm h (3⅛" x 1½" h)
11.4cl (4oz)



Tea Cup
AND0515
7.0cm h (2¾" h) 22.0cl (7¾oz)
Tea Saucer
AND0516 15.3cm (6")
Fits AND0515



Espresso Cup
AND0517
6.0cm h (2½" h) 12.0cl (4¼oz)
Espresso Saucer
AND0518 12.0cm (4¾")
Fits AND0517



Mug
AND0523
11.0cm h (4⅓" h) 31.0cl (11oz)



Coffee Pot
AND0531
18.0cm h (7⅛" h) 66.0cl (23¼oz)



Teapot
AND0522
13.5cm h (5⅓" h) 66.0cl (23¼oz)



Jug
AND0521
8.0cm h (3½" h) 22.0cl (7¾oz)



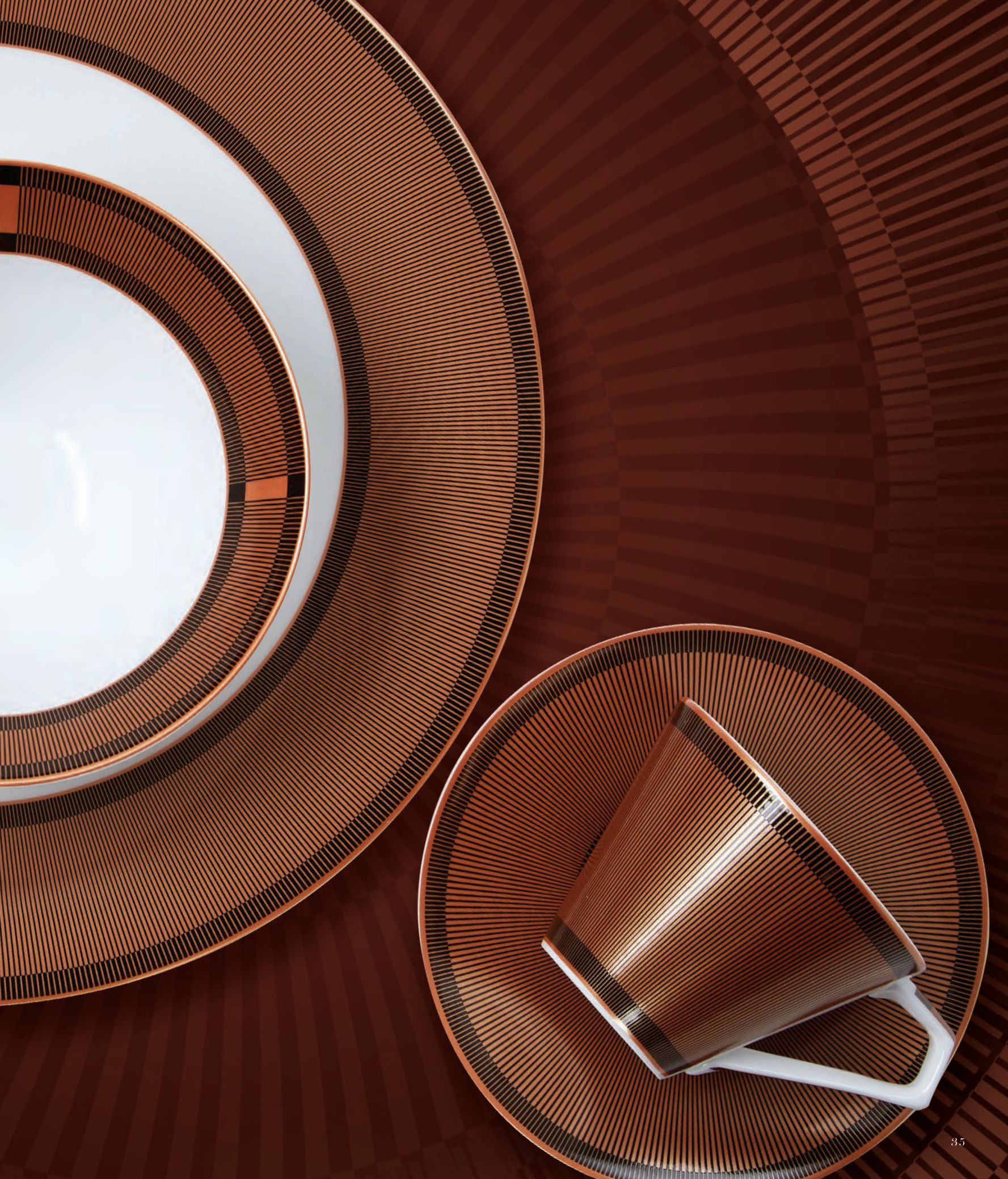
Jug
AND0527
6.0cm h (2½" h) 11.0cl (3¾oz)



Sugar Bowl
AND0519
8.5cm h (3½" h) 20.0cl (7oz)
AND0520 Sugar Bowl Lid



Salt
AND0525 6.5cm h (2½" h)
Pepper
AND0526 6.5cm h (2½" h)





Coupe Plate
AND0419 30.0cm (11¾")



Coupe Plate
AND0244 27.0cm (10½")



Coupe Plate
AND0163 21.0cm (8¼")
Fits Large 3-Tier Tea Stand



Coupe Plate
AND0421 16.5cm (6½")
Fits Small 3-Tier Tea Stand &
2-Tier Plate Stand



Bowl
AND0473
27.5cm x 6.0cm h (10¾" x 2½" h)
68.2cl (24oz)



Bowl
AND0512
22.5cm x 6.0cm h (9" x 2½" h)
59.7cl (21oz)



Bowl
AND0474
16.0cm x 6.5cm h (6½" x 2½" h)
34.0cl (12oz)



Bowl
AND0513
11.5cm x 4.0cm h (4½" x 1½" h)
19.9cl (7oz)



Bowl
AND0514
8.0cm x 3.5cm h (3⅛" x 1½" h)
11.4cl (4oz)



Tea Cup
AND0515
7.0cm h (2¾" h) 22.0cl (7¾oz)
Tea Saucer
AND0516 15.3cm (6")
Fits AND0515



Espresso Cup
AND0517
6.0cm h (2½" h) 12.0cl (4¼oz)
Espresso Saucer
AND0518 12.0cm (4¾")
Fits AND0517



Mug
AND0523
11.0cm h (4⅓" h) 31.0cl (11oz)



Coffee Pot
AND0531
18.0cm h (7⅛" h) 66.0cl (23¼oz)



Teapot
AND0522
13.5cm h (5⅓" h) 66.0cl (23¼oz)



Jug
AND0521
8.0cm h (3½" h) 22.0cl (7¾oz)



Jug
AND0527
6.0cm h (2½" h) 11.0cl (3¾oz)



Sugar Bowl
AND0519
8.5cm h (3½" h) 20.0cl (7oz)
AND0520 Sugar Bowl Lid



Salt
AND0525 6.5cm h (2½" h)
Pepper
AND0526 6.5cm h (2½" h)





Coupe Plate
AND0244 27.0cm (10½")



Coupe Plate
AND0163 21.0cm (8¼")
Fits Large 3-Tier Tea Stand



Coupe Plate
AND0421 16.5cm (6½")
Fits Small 3-Tier Tea Stand &
2-Tier Plate Stand



Bowl
AND0441
24.0cm (9½") 59.7cl (21oz)



Bowl
AND0332
14.5cm x 5.2cm h (5¾" x 2" h)
35.0cl (12⅓oz)



Condiment Pot
AND0249
6.5cm x 3.3cm h (2½" x 1½" h)
5.0cl (1¾oz)



Tea Cup Footed
AND0106
7.0cm h (2¾" h) 22.0cl (8oz)
Tea Saucer/Soup Stand
AND0107 16.0cm (6½") Fits AND0106



Espresso Cup Footed
AND0145
5.6cm h (2¼" h) 9.0cl (3oz)
Espresso Saucer
AND0146 12.0cm (4¾") Fits AND0145



Mug
AND0281
9.0cm h (3½" h) 35.0cl (12⅓oz)



Teapot 4 Cup
AND0415
16.5cm h (6½" h) 80.0cl (28oz)



Milk Jug
AND0120
10.5cm h (4⅓" h) 25.0cl (9oz)



Covered Sugar
AND0119
11.5cm (4½") 25.0cl (9oz)



Tea For One Cup
AND0411A
6.0cm h (2½" h) 26.0cl (9oz)
Tea For One Saucer
AND0169 14.5cm (5¾") Fits AND0411A



Tea For One Teapot
AND0411B
12.4cm h (5" h) 46.0cl (16oz)



Tea For One Set
AND0411 Comprised of
AND0411B, AND0411A, AND0169



Rectangle Tray L/S
AND0136
34.0cm x 15.0cm (13½" x 6")





Plate
AND0478 31.0cm (12¼")



Plate
AND0480 27.5cm (10¾")



Plate
AND0471 22.0cm (8¾")



Plate
AND0472 15.0cm (6")



Bowl
AND0473
 27.5cm x 6.0cm h (10¾" x 2½" h)
 68.2cl (24oz)



Bowl
AND0474
 16.0cm x 6.5cm h (6½" x 2½" h)
 34.0cl (12oz)



Tea Cup
AND0436
 5.4cm (2⅛") 17.0cl (6oz)
 Tea Saucer Low
AND0109 15.0cm (6") Fits AND0436



Teapot
AND0467
 15.3cm h (6" h) 65.0cl (23oz)
 Includes Teapot Infuser



Milk Jug
AND0470
 5.0cm h (2" h) 22.0cl (7¾oz)



Covered Sugar
AND0468
 5.0cm h (2" h) 18.0cl (6⅓oz)

RESTAURANT COLLECTION

DEVELOPED WITH BRETT GRAHAM

“People today want to make a bit of a statement at the dinner table. That’s been our thinking in collaboration with William Edwards on the Frost range - the pieces have a distinctive yet understated style, to make sure your lovingly-prepared food is always the centrepiece when you serve it” - Brett Graham, The Ledbury





Large 3-Tier Tea Stand
82000AND10LS
47.5cm H (Fits 21/22cm Plate)



Small 3-Tier Tea Stand
82000AND10SS
40.5cm H (Fits 16/17cm Plate)



2-Tier Plate Stand
82000AND102T
12.0cm H (Fits 16/17cm Plate)





B E S P O K E C O M M I S S I O N S











*The beauty of detail
and craftsmanship*

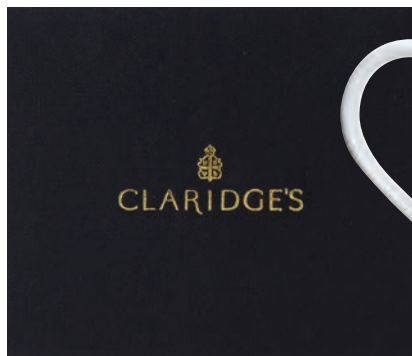
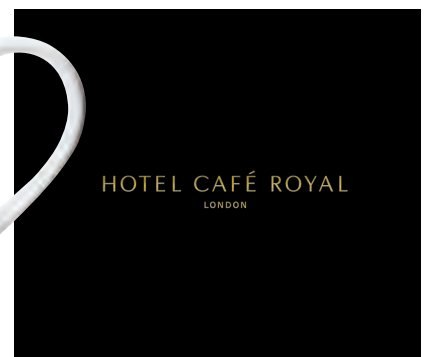
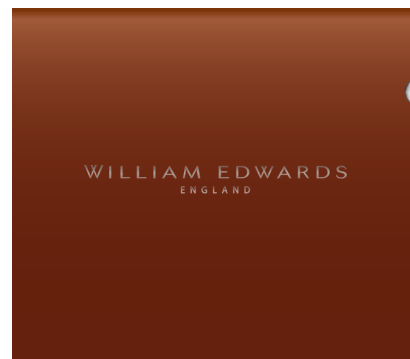




FORTNUM & MASON
EST. 1707



BRANDED GIFT COLLECTIONS





W H I T E W A R E C O L L E C T I O N

Our white shapes collections cater for all aspects of food service, combinations of both classic shapes and contemporary form, either in pure white or embellished with your own unique pattern.



Plate
AND0100 33.0cm (13")



Plate
AND0101 30.0cm (11¾")
Fits Clouche L/S AND0177



Plate **NEW**
AND0548 28.5cm (11¼")
Fit Plate Cover



Plate
AND0102 27.5cm (10¾")



Plate
AND0149 24.0cm (9½")



Plate
AND0103 22.0cm (8¾")*



Plate
AND0104 16.8cm (6½")**



Plate
AND0369 15.0cm (6")



Deep Rim Bowl **NEW**
AND0549 28.5cm (11¼")



Large Rim Bowl
AND0132
28.0cm x 5.7cm h (11" x 2¼" h)
60.0cl (21oz)
Fits Clouche L/S AND0177



Rim Bowl
AND0105
22.0cm (8¾") 22.5cl (8oz)



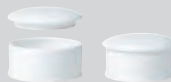
Consommé Cup 2 Handled
AND0114
5.2cm h (2" h) 20.0cl (7oz)
Tea Saucer/Soup Stand
AND0107 16.0cm (6½")
Fits AND0114



Rectangle Tray
AND0217
22.5cm x 8.0cm (9" x 5")
Compatible with Square Pot
AND0218



Square Pot
AND0218
7.0cm x 7.0cm x 5.6cm h
(2¾" x 2¾" x 2⅛" h)



Condiment Pot **NEW**
AND0235
8.0cm x 3.5cm h (3" x 1⅛" h)
11.3cl (4oz)

Condiment Pot Lid **NEW**
AND0235L Fits AND0235



Condiment Pot
AND0249
6.5cm x 3.3cm h (2½" x 1½" h)
5.0cl (1¾oz)

Condiment Pot Lid **NEW**
AND0386 Fits AND0249





Flared Footed Tea Cup **NEW**
AND0562
 177.5cl (6¼oz)
 Tea For One Saucer
AND0169 14.5cm (5¾") Fits AND0562



Tea Cup Footed
AND0106
 7.0cm h (2¾" h) 22.0cl (8oz)
 Tea Saucer/Soup Stand
AND0107 16.0cm (6½") Fits AND0106



Espresso Cup Footed
AND0145
 5.6cm h (2¼" h) 9.0cl (3oz)
 Espresso Cover **NEW**
AND0563 Fits AND0112, AND0145
 Espresso Saucer
AND0146 12.0cm (4¾") Fits AND0145



Coffee Pot
AND0123
 21.5cm h (8½" h) 110.0cl (39oz)



Teapot 4 Cup
AND0415
 16.5cm h (6½" h) 80.0cl (28oz)



Teapot 2 Cup
AND0434
 13.8cm h (5½" h) 50.0cl (17½oz)



Milk Jug
AND0120
 10.5cm h (4¼" h) 25.0cl (9oz)



Cream Jug
AND0137
 7.0cm h (2¾" h) 12.0cl (4¼oz)



Covered Sugar
AND0119
 11.5cm (4½") 25.0cl (9oz)



Rectangle Tray L/S
AND0136
 34.0cm x 15.0cm (13½" x 6")



Rectangle Tray
AND0259
 25.0cm x 13.0cm (9¾" x 5")



COUPE WHITE

WHITEWARE COLLECTION



Coupe Plate
AND0419 30.0cm (11¾")



Coupe Plate
AND0244 27.0cm (10½")



Coupe Plate **NEW**
AND0547 23.0cm (9")



Coupe Plate
AND0163 21.0cm (8¼")*



Coupe Plate
AND0421 16.5cm (6½")**



Deep Coupe Bowl **NEW**
AND0550 28.5cm (11¼")



Bowl
AND0441
24.0cm (9½") 59.7cl (21oz)



Large Bowl **NEW**
AND0150
23.0cm (9⅓") 2ltr (70oz)



Bowl
AND0332
14.5cm x 5.2cm h (5¾" x 2" h)
35.0cl (12⅓oz)



Dipping Bowl
AND0422
7.5cm x 4.3cm h (3" x 1⅔" h)
7.5cl (2¾oz)



Noodle Bowl **NEW**
AND0564 15.0cm (6")
Fits Saucer AND0211
Noodle Bowl Lid **NEW**
AND0565 Fits AND0564
Saucer
AND0211 16.0cm (6⅓")
Fits AND0564



Bowl
AND0126
11.0cm x 5.0cm h (4⅓" x 2" h)
25.0cl (9oz)
Bowl Lid
AND0127 12.0cm (4⅔")
Fits AND0126



Butter Dish
AND0295 11.0cm (4½")
Fits Clouche S/S AND0543



Butter Dish
AND0238 8.0cm (3")

* Fits Large 3-Tier Tea Stand
** Fits Small 3-Tier Tea Stand & 2-Tier Plate Stand





Tea Cup Low **NEW**
AND0557
34.0cl (12oz)
Tea Saucer/Soup Stand
AND0107 16.0cm (6½")
Fits AND0557



Tea Cup Low
AND0108
6.5cm h (2½" h) 22.0cl (8oz)
Tea Saucer Low
AND0109 15.0cm (6")
Fits AND0108



Espresso Cup Low **NEW**
AND0558
8.5cl (3oz)
Espresso Saucer
AND0146 12.0cm (4¾")
Fits AND0558



Tea Cup Can
AND0110
6.0cm h (2½" h) 20.0cl (7oz)
Saucer
AND0211 16.0cm (6⅓")
Fits AND0110



Coffee Can
AND0112
6.0cm h (2½" h) 10.0cl (3½oz)
Fits Cover AND0563 **NEW**
Espresso Saucer
AND0152 12.0cm (4¾")
Fits AND0112



Oval Coffee Pot
AND0477
17.0cm h (6¾" h) 100.0cl (35oz)



Oval Teapot 4 Cup
AND0333
13.5cm h (5⅓" h) 70.0cl (24½oz)



Oval Teapot 2 Cup
AND0337
10.0cm h (4" h) 55.0cl (19⅓oz)



Milk Jug L/S
AND0334
10.0cm h (4" h) 35.0cl (12⅓oz)



Milk Jug S/S
AND0340
9.0cm h (3½" h) 22.0cl (7¾oz)



Cream/Jus Jug
AND0159
6.5cm h (2½" h) 10.0cl (3⅓oz)



Oval Sugar
AND0335
9.0cm h (3½" h) 22.5cl (8oz)
AND0341 Oval Sugar Lid



Tea For One Cup
AND0411A
6.0cm h (2½" h) 26.0cl (9oz)
Tea For One Saucer
AND0169 14.5cm (5¾")
Fits AND0411A



Tea For One Teapot
AND0411B
12.4cm h (5" h) 46.0cl (16oz)



Tea For One Set
AND0411 Comprised of
AND0411B, AND0411A, AND0169



Mug
AND0281
9.0cm h (3½" h) 35.0cl (12⅓oz)



Mug Small
AND0362
8.6cm h (3½" h) 30.0cl (10½oz)



Open Sugar
AND0148
8.5cm h (3⅓" h) 20.0cl (7oz)



Arabic Cup
AND0237
5.0cm h 10.0cl





Plate
AND0478 31.0cm (12¼")



Plate
AND0480 27.5cm (10¾")



Plate
AND0471 22.0cm (8¾")



Plate
AND0472 15.0cm (6")



Bowl
AND0473
27.5cm x 6.0cm h (10¾" x 2½" h)
68.2cl (24oz)



Bowl
AND0512
22.5cm x 6.0cm h (9" x 2½" h)
59.7cl (21oz)



Bowl
AND0474
16.0cm x 6.5cm h (6½" x 2½" h)
34.0cl (12oz)



Bowl
AND0513
11.5cm x 4.0cm (4½" x 1½" h)
19.9cl (7oz)



Bowl
AND0514
8.0cm x 3.5cm h (3⅛" x 1½" h)
11.4cl (4oz)



Tea Cup
AND0515
7.0cm h (2¾" h) 22.0cl (7¾oz)
Tea Saucer
AND0516 15.3cm (6")
Fits AND0515



Espresso Cup
AND0517
6.0cm h (2½" h) 12.0cl (4¼oz)
Espresso Saucer
AND0518 12.0cm (4¾")
Fits AND0517



Mug
AND0523
11.0cm h (4⅓" h) 31.0cl (11oz)



Coffee Pot
AND0531
18.0cm h (7⅓" h) 66.0cl (23¼oz)



Teapot
AND0522
13.5cm h (5⅓" h) 66.0cl (23¼oz)



Jug
AND0521
8.0cm h (3½" h) 22.0cl (7¾oz)



Jug
AND0527
6.0cm h (2½" h) 11.0cl (3¾oz)



Sugar Bowl
AND0519
8.5cm h (3½" h) 20.0cl (7oz)
AND0520 Sugar Bowl Lid



Salt
AND0525 6.5cm h (2½" h)
Pepper
AND0526 6.5cm h (2½" h)



PRESIDENT & BANQUETING

WHITEWARE COLLECTION



Narrow Rim Plate
AND0189 30.0cm (11¾")



Narrow Rim Plate
AND0180 27.0cm (10½")



Narrow Rim Plate
AND0181 24.0cm (9½")



Narrow Rim Plate
AND0182 22.0cm (8¾")



Narrow Rim Plate
AND0183 17.0cm (6¾")



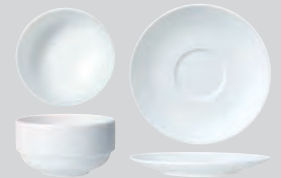
Flat Wide Rim Bowl **NEW**
AND0569 31.5cm (12½")
Clouche L/S **NEW**
AND0177
19.0cm x 9.2cm h (7½" x 3⅝" h)
Fits AND0132, AND0101 & AND0569



Flat Wide Rim Bowl **NEW**
AND0541 23.0cm (9")
Clouche S/S **NEW**
AND0543
12.0cm x 8.0cm h (4¾" x 3⅛" h)
Fits AND0541 & AND0295



Cereal Bowl **NEW**
AND0555 16.0cm (6¼")



Stacking Soup Cup **NEW**
AND0551
28.5cl (10oz)
Tea Saucer/Soup Stand
AND0107 16.0cm (6½")
Fits AND0551



Stacking Cup **NEW**
AND0554
21.25cl (7½oz)
Tea Saucer/Soup Stand
AND0107 16.0cm (6½")
Fits AND0554



Stacking Cup **NEW**
AND0556
8.5cl (3oz)
Espresso Saucer
AND0146 12.0cm (4¾")
Fits AND0556



Gravy Boat
AND0128
19.0cm x 9.0cm h (7½" x 3½" h)
28.0cl (10oz)
Gravy Boat Stand
AND0129
21.0cm x 14.0cm (8¼" x 5½")
Fits AND0128



Eggcup
AND0131 6.4cm h (2½" h)



Salt
AND0124 6.7cm h (2⅔" h)
Pepper
AND0125 6.7cm h (2⅔" h)





Oval Dish
AND0167
 41.0cm x 32.0cm (16" x 12½")



Oval Dish
AND0117
 35.5cm x 28.0cm (14" x 11")



Oval Dish **NEW**
AND0454
 23.0cm x 17.9cm (9" x 7⅛")



Oval Tray
AND0322
 35.0cm x 27.6cm (13¾" x 10⅞")



Oval Tray **NEW**
AND0561 20.25cm (8")



Oval Platter
AND0424
 30.0cm x 22.0cm (11¾" x 8⅝")



Tea Cup
AND0436
 5.4cm h (2⅛" h) 17.0cl (6oz)
 Tea Saucer Low
AND0109 15.0cm (6")
 Fits AND0436



Connoisseur Beverage Pot
AND0542
 11.1cm h (4⅜" h) 45.0cl (15¼oz)
 Teapot Infuser not included
AND1001 Teapot Infuser



Teapot
AND0467
 15.3cm h (6" h) 65.0cl (23oz)
 Teapot Infuser not included
AND1001 Teapot Infuser



Milk Jug
AND0470
 5.0cm h (2" h) 22.0cl (7¾oz)



Covered Sugar
AND0468
 5.0cm h (2" h) 18.0cl (6⅓oz)

*Expertly designed to elevate
the finest of tea services*





Square Tray **NEW**
AND0487
22.5cm x 22.5cm (8¾" x 8¾")



Square Tray
AND0140 18.0cm (7")



Square Tray
AND0142 7.5cm (3")



Deep Coupe Bowl **NEW**
AND0550 28.5cm (11¼")



Bowl
AND0441
24.0cm (9½") 59.7cl (21oz)



Large Bowl **NEW**
AND0150
23.0cm (9⅛") 2ltr (70oz)



Bowl
AND0332
14.5cm x 5.2cm h (5¾" x 2" h)
35.0cl (12⅓oz)



Dipping Bowl
AND0422
7.5cm x 4.3cm h (3" x 1⅔" h)
7.5cl (2¾oz)



Noodle Bowl **NEW**
AND0564 15.0cm (6")
Fits Saucer **AND0211**
Noodle Bowl Lid **NEW**
AND0565 Fits **AND0564**
Saucer
AND0211 16.0cm (6⅓")
Fits **AND0564**



Bowl
AND0126
11.0cm x 5.0cm h (4⅓" x 2" h)
25.0cl (9oz)
Bowl Lid
AND0127 12.0cm (4⅔")
Fits **AND0126**



Bowl
AND0126
11.0cm x 5.0cm h (4⅓" x 2" h)
25.0cl (9oz)
Oriental Bowl Lid
AND0433 Fits **AND0126**



Oriental Cup
AND0426
9.0cm h (3½" h) 16.0cl (5½oz)
Oriental Cup Lid
AND0432 Fits **AND0426**
Espresso Saucer
AND0146
12.0cm (4¾") Fits **AND0426**



Oriental Teapot
AND0425
9.0cm h (3½" h) 40.0cl (14oz)



Oriental Sauce Bottle
AND0427
7.7cm h (3" h) 7.5cl (2¾oz)



Round Divided Dish **NEW**
AND0566 9.7cm x 2.3cm



Butter Dish
AND0238 8.0cm (3")



Chinese Spoon
AND0428
14.5cm x 4.5cm (5¾" x 1¾")



Spoon Rest
AND0429
9.0cm x 5.5cm (3½" x 2½")



Chopstick & Spoon Rest **NEW**
AND0567
7.2cm x 3.2cm x 1.7cm



Chopstick Rest
AND0430 5.5cm (2¼")



Ashtray **NEW**
AND0568 9.0cm x 3.0cm



T H E C O M P A N Y W E K E E P



HOTEL CAFÉ ROYAL

Fairmont



FORTNUM & MASON
EST 1707



Annabel's
46 BERKELEY SQUARE



Jumeirah

CLARIDGE'S



THE LEDBURY

One&Only

The Dorchester



BERKELEY
LONDON

ROTHSCHILD



The Goring



ROSEWOOD
LONDON

The
MERRION
DUBLIN

B O N E C H I N A C A R E G U I D E

William Edwards tableware complies fully with all International technical standards. All products undergo an exhaustive series of tests to ensure that colours are as hard wearing as possible. All our products conform to proposition 65 - lead-free, and we have full ISO 9000 accreditation. Quality checks are constantly carried out to monitor the ability of the ware to resist the rigours of day-to-day use.



Always wash as soon as possible after use; where possible avoid leaving food on china for any significant length of time. Stack carefully so that individual items are not touching.



Do not overload the dishwasher and ensure that the water temperature is correct and the machine is regularly serviced and in good order.



There are many automatic dishwashing detergents available today to suit different operating conditions. It is important to select the correct one, as some detergents can cause corrosion and permanent damage to the tableware decoration.



Recommended dishwasher temperature for china is up to 65°C. A wash temperature of 60°C is recognised as the most effective for removal of food soiling, with little risk of damage to the decoration.



Ensure cutlery is washed separately in designated cutlery baskets to prevent the possibility of metal marking during washing.



WE fine bone china can be used in a commercial environment, however, extra care must be taken with precious metals, (gold and platinum) which are more susceptible to aggressive washing and handling techniques. Avoid the use of metal scourers or abrasive detergents/powders, as these may be detrimental to the decoration.



Fine bone china should not be used for cooking purposes. Do not expose to a naked flame and avoid use in an oven. Products with gold or platinum decoration must not be used in a microwave due to the metallic content.



Using higher temperatures or overdosing on detergent will cause deterioration to the glazed finish or damage any decoration on the product. Most dishwashers have a short wash or china/crystal cycle that should be sufficient for most cleaning of china.

T R A I N I N G

We are willing to assist, whether that be through a personal visit or a phonecall. With regards to the improvement of handling and storage within commercial hospitality environments, we can ensure maximum longevity of the product we supply



**United Kingdom &
Republic of Ireland**

Steelite International Ltd
Orme Street
Stoke-on-Trent
ST6 3RB, England
Telephone +44 (0)1782 821 000
Fax +44 (0)1782 819 926
Email headoffice@steelite.com

London Showroom

Steelite International Ltd
75 Wells Street
2nd Floor South
London, W1T 3QH
Telephone +44 (0)1782 249 599
Email london@steelite.com

United States of America

Steelite International USA Inc
154 Keystone Drive
New Castle, PA 16105
Telephone +1724 856 4900
Fax +1724 856 7924
Email usa@steelite.com

Benelux

Steelite International Benelux BV
's Gravelandseweg 258
3125 BK Schiedam
Nederland
Telephone +31 (0)20 617 5915
Email info@steelite.nl

Germany

Steelite International
Deutschland GmbH
Philipp-Reis-Straße 16
64404 Bickenbach
Telephone +49 (0)6257 61950
Fax +49 (0)6257 7944
Email germany@steelite.com

France

Telephone +33 682 574 291
Email france@steelite.com

Italy

Telephone +39 0522 902051
Fax +39 0522 902017
Email italy@steelite.com

Portugal

Telephone +351 918 550 429
Fax +351 211 541 022
Email portugal@steelite.com

Scandinavia

Telephone +46 730 322 818
Email scandinavia@steelite.com

Spain

Steelite International Spain
Médico Andrés Boldó, 2
03005 Alicante
Telephone +34 966 590 300
Email spain@steelite.com

Madrid Showroom

Calle Serrano, 27, 6th Floor,
28001 Madrid
Telephone +34 910 400 870
Email madrid@steelite.com

Russia, Central & Eastern Europe

CECUK Ltd
Coleridge House, Suite 47
2-3 Coleridge Gardens
London
NW6 3QH
Telephone 0044 207 435 9033
Mobile 00777 613 5088
Email rcee@steelite.com

Australia

Steelite International
Unit 45, Slough Business Park
2 Slough Avenue
Silverwater
NSW 2128
Telephone +61 (0)2 9648 4522
Fax +61 (0)2 9648 4523
Email australia@steelite.com

Canada

Steelite International Canada Ltd
Unit 2, 26 Riviera Drive
Markham, Ontario
L3R5M1
Telephone +1 905 752 1074
Fax +1 905 752 1120
Email canada@steelite.com

Middle East

Telephone 0031 6242 12506
Email dchristoffels@steelite.com

Asia

Telephone +82 10 4997 7926
Fax +44 (0)1782 821 000
Email asia@steelite.com

Hong Kong Showroom

20/F. Chinachem Hollywood Center
1-13 Hollywood Road
Central, Hong Kong
Telephone +852 3906 8989
Fax +852 2147 9090
Email umesh@globalhotelware.com

William Edwards

Anderton Works
Port Street, Middleport
Stoke-on-Trent
ST6 3PF
England
Telephone +44 (0)1782 838 000
Email sales@williamedwards.co.uk



London Showroom

5 Hanover Square
Mayfair, London
W1S 1HQ
Please contact the sales office at
Email sales@williamedwards.co.uk

www.williamedwards.co.uk

 [williamedwardsbonechina](https://www.instagram.com/williamedwardsbonechina)

www.steelite.com

 [steeliteinternationalEMEA](https://www.facebook.com/steeliteinternationalEMEA)
 [steeliteEMEA](https://twitter.com/steeliteEMEA)
 [steelite_emea](https://www.instagram.com/steelite_emea)

SHOWROOMS

Atlanta • Chicago • Hong Kong • Los Angeles • London, UK • Madrid • New York
Stoke-on-Trent, UK • Sydney, AUS • Toronto, ON • Washington, D.C. • Youngstown, OH

