

**Steelite's Original Craft Collection  
and  
Dapple Collection**





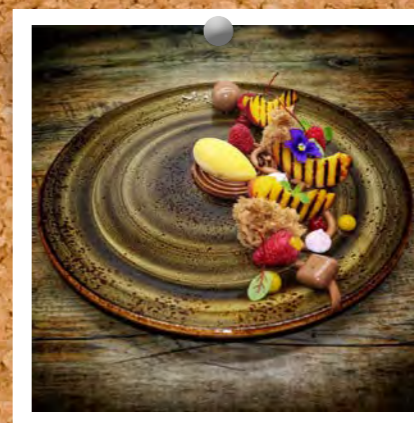
# One of the most Instagrammable collections



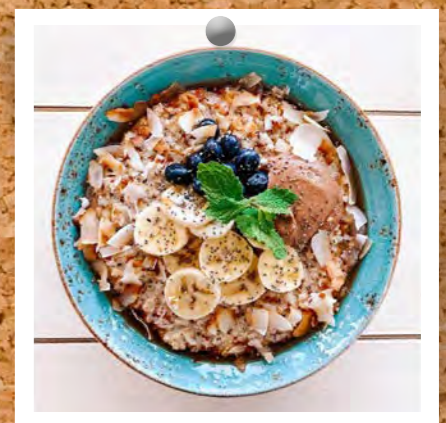
@xoxo\_brunchandcocktails



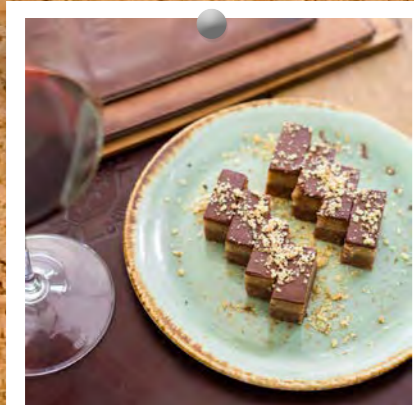
@hotel\_okura\_amsterdam



@wcuisine



@passioncafe



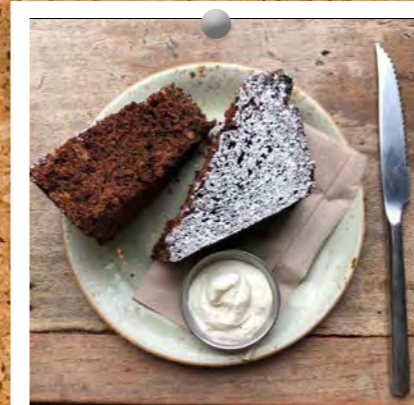
@restoran.bela.reka



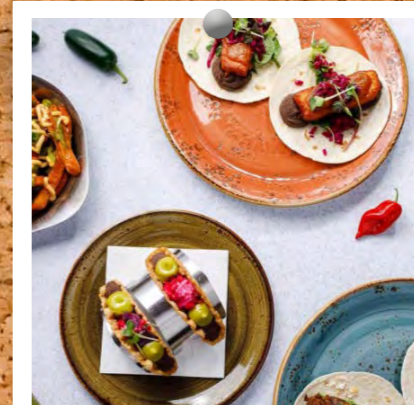
@cafebouludto



@krokitchen



@federalcafebar



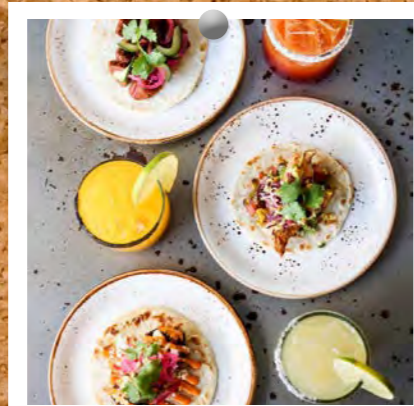
@yucmexican



@caponessgalway



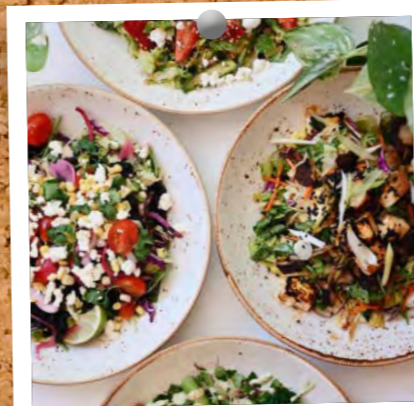
@neighborla



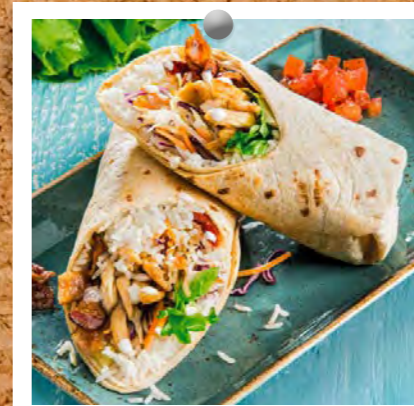
@johnnysanchezrestaurant



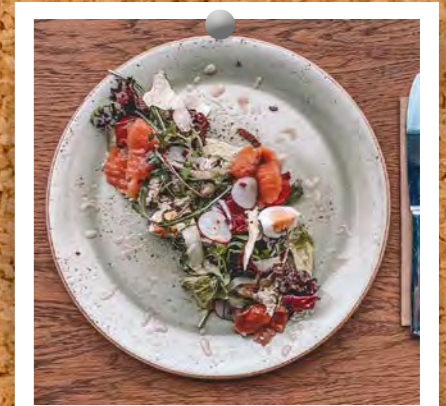
@hrcamsterdam



@lifealivecafe



@calavera\_restaurant



@pentahotels

For any inquiries on The Craft Story please e-mail [kmatienzo@steeliteusa.com](mailto:kmatienzo@steeliteusa.com)



*heightened senses, amplified presentation*

Urban appeals to a sharper, city aesthetic where food is still tied to the traditional values of honesty, integrity and authenticity, but requires a slightly more formal, more defined and refined presentation style. Emulating a concrete look, Smoke is a collection of tableware that takes its inspiration from the aesthetics associated with the act of cooking. The subtle and nuanced tones of grey contrast with the darker reactive elements to mirror the effects of browning and searing, creating a connection between the food and the plate.



Coupe Plate  
**12080565** D 11 3/4"  
**12080566** D 10"  
**12080567** D 8"  
**12080568** D 6"



Coupe Bowl  
**12080569**  
 D 10" H 1 1/2" (11/8 qt)  
**12080570**  
 D 8 1/2" H 1 1/2" (27 oz)



Rectangle Tray  
**12080550**  
 L 10 5/8" W 6 1/2"



FreeStyle Bowl  
**12080524**  
 L 7" W 5 1/2" H 2 1/2" (14 1/2 oz)  
**12080525**  
 L 5" W 3 3/4" H 2 1/8" (4 oz)



Sugar/Bouillon Club  
**12080379**  
 D 3 7/8" H 2 1/8"  
 (8 oz)



Taster Dip  
**12080575**  
 D 2 1/2"  
 (2 oz)

*smoke*



Liv Cup  
**1208X0021** L 4 5/8" W 2 7/8" (8 oz)  
**1208X0023** L 3 1/2" W 2 1/8" (3 oz)  
 Liv Saucer  
**1208X0042** D 6" (Fits X0021)  
**1208X0043** D 5" (Fits X0023)



Quench Mug  
**12080592**  
 L 4 1/4" H 4 3/8"  
 (10 oz)



Liv Jug  
**1208X0030**  
 L 3 5/8" H 2 5/8" (5 oz)



*trendy, authentic, unique*

Inspired by hand-crafted, simple country wares, the Craft range has grown to embody several colors over the years. In conjunction with its 10th Anniversary, we are very pleased to bring you Craft Raspberry. A beautiful range with a raspberry hue, this new shade adds more warmth and playfulness to the Craft family. Mix & match with existing colors or use as a standalone offer, Craft Raspberry provides a stunning platform for chefs to present their creations.

*raspberry*



Coupe Plate  
**12100565** D 11 3/4"  
**12100566** D 10"  
**12100567** D 8"  
**12100568** D 6"



FreeStyle Plate  
**12100501**  
 L 14 5/8" W 9 5/8"



FreeStyle Plate  
**12100521**  
 L 10" W 8 1/8"



Rectangle Tray  
**12100550**  
 L 10 5/8" W 6 1/2"



Coupe Bowl  
**12100569**  
 D 10" H 1 1/2" (1 1/8 qt)  
**12100570**  
 D 8 1/2" H 1 1/2" (27 oz)



FreeStyle Bowl  
**12100524**  
 L 7" W 5 1/2" H 2 1/2" (14 1/2 oz)  
**12100525**  
 L 5" W 3 3/4" H 2 1/8" (4 oz)



Low Cup  
**12100189** L 4 3/4" H 2 3/8" (8 oz)  
**12100190** L 3 1/2" H 1 3/4" (3 oz)  
 Slimline Double Well Saucer  
**12100158** D 5 3/4" Fits 0152, 0189  
**12100165** D 4 5/8" Fits 0190



Quench Mug  
**12100592**  
 L 4 1/4" H 4 3/8"  
 (10 oz)



Club Jug  
**12100387**  
 L 5 1/2" W 4" H 3 1/4"  
 (5 oz)



Taster Dip  
**12100575**  
 D 2 1/2" H 1 1/4"  
 (1 3/4 oz)

Due to the unique hand-decorated design, each item will be slightly different in color and texture from images shown.

D=Diameter L=Length W=Width H=Height • All products are measured at max capacity (oz). For further details contact your customer service rep.



*craft inspires individuality & eclecticism*

As we continue to celebrate 10 years of Craft, we are excited to introduce the latest colorway, Apple. The growth of interest in plant-based and health-conscious menus are deserving of a bright & energetic hue like Apple. Promoting a feeling of wholesome wellbeing, this distinctly contemporary tone is great on its own or mix & match with the existing Craft colors to create an eye-catching presentation.

*apple*



Coupe Plate  
**12110544** D 11"  
**12110566** D 10"  
**12110567** D 8"  
**12110568** D 6"



FreeStyle Plate  
**12110501**  
 L 14 5/8" W 9 5/8"



FreeStyle Plate  
**12110521**  
 L 10" W 8 1/8"



Rectangle Tray  
**12110556** L 13" W 7 1/2"  
**12110550** L 10 5/8" W 6 1/2"



Coupe Bowl  
**12110569**  
 D 10" H 1 1/2" (1 1/8 qt)  
**12110570**  
 D 8 1/2" H 1 1/2" (27 oz)



FreeStyle Bowl  
**12110524**  
 L 7" W 5 1/2" H 2 1/2" (14 1/2 oz)  
**12110525**  
 L 5" W 3 3/4" H 2 1/8" (4 oz)



Low Cup  
**12110189** L 4 3/4" H 2 3/8" (8 oz)  
**12110190** L 3 1/2" H 1 3/4" (3 oz)  
 Slimline Double Well Saucer  
**12110158** D 5 3/4" Fits 0152, 0189  
**12110165** D 4 5/8" Fits 0190



Quench Mug  
**12110592**  
 L 4 1/4" H 4 3/8"  
 (10 oz)



Club Jug  
**12110387**  
 L 5 1/2" W 4" H 3 1/4"  
 (5 oz)



Taster Dip  
**12110575**  
 D 2 1/2" H 1 1/4"  
 (1 3/4 oz)

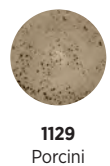
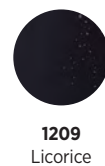
Due to the unique hand-decorated design, each item will be slightly different in color and texture from images shown.  
 D=Diameter L=Length W=Width H=Height • All products are measured at max capacity (oz). For further details contact your customer service rep.





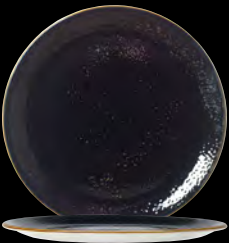
*hand-applied glazes*

Create a memorable experience for diners with Licorice and Porcini, two striking colors within Craft tableware collection. Licorice adds drama and sophistication to the entire range and is in sync with the current trend for black tableware. Visually appealing, Porcini works well with the existing Craft colors, amplifying the rustic effect and reinvigorating an already iconic and market-trusted range. The range embodies the beauty of rich, lustrous glazes applied by hand, and celebrates chance effects and reactions which occur in the kiln.

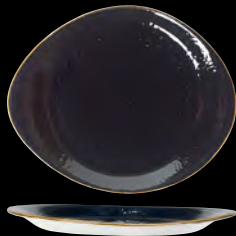




*licorice*



Coupe Plate  
**12090565** D 11 3/4"  
**12090566** D 10"  
**12090567** D 8"  
**12090568** D 6"



FreeStyle Plate  
**12090521**  
 L 10" W 8 1/8"



Rectangle Tray  
**12090550**  
 L 10 5/8" W 6 1/2"



Coupe Bowl  
**12090569**  
 D 10" H 1 1/2" (1 1/8 qt)  
**12090570**  
 D 8 1/2" H 1 1/2" (27 oz)



FreeStyle Bowl  
**12090524**  
 L 7" W 5 1/2" H 2 1/2" (14 1/2 oz)  
**12090525**  
 L 5" W 3 3/4" H 2 1/8" (4 oz)



Low Cup  
**12090189** L 4 3/4" H 2 3/8" (8 oz)  
**12090190** L 3 1/2" H 1 3/4" (3 oz)  
 Slimline Double Well Saucer  
**12090158** D 5 3/4" (Fits 0152, 0189)  
**12090165** D 4 5/8" (Fits 0190)



Quench Mug  
**12090592**  
 L 4 1/4" H 4 3/8" (10 oz)



Taster Dip  
**12090575**  
 D 2 1/2" H 1 1/4" (1 3/4 oz)

*porcini*



Coupe Plate  
**11290565** D 11 3/4"  
**11290566** D 10"  
**11290567** D 8"  
**11290568** D 6"



FreeStyle Plate  
**11290521**  
 L 10" W 8 1/8"



Rectangle Tray  
**11290550**  
 L 10 5/8" W 6 1/2"



Coupe Bowl  
**11290569**  
 D 10" H 1 1/2" (1 1/8 qt)  
**11290570**  
 D 8 1/2" H 1 1/2" (27 oz)



FreeStyle Bowl  
**11290524**  
 L 7" W 5 1/2" H 2 1/2" (14 1/2 oz)  
**11290525**  
 L 5" W 3 3/4" H 2 1/8" (4 oz)



Low Cup  
**11290189** L 4 3/4" H 2 3/8" (8 oz)  
**11290190** L 3 1/2" H 1 3/4" (3 oz)  
 Slimline Double Well Saucer  
**11290158** D 5 3/4" (Fits 0152, 0189)  
**11290165** D 4 5/8" (Fits 0190)



Quench Mug  
**11290592** L 4 1/4" H 4 3/8" (10 oz)



Taster Dip  
**11290575**  
 D 2 1/2" H 1 1/4" (1 3/4 oz)

Due to the unique hand-decorated design, each item will be slightly different in color and texture from images shown.  
 D=Diameter L=Length W=Width H=Height • All products are measured at max capacity (oz). For further details contact your customer service rep.



*the original craft*

Craft is inspired by hand-crafted, simple country wares made by generations of potters over hundreds of years. The range embodies the beauty of rich, lustrous glazes applied by hand, and celebrates chance effects and reactions which occur naturally in the kiln. The gem-like glazes married to simple forms and shapes produce a unique and individual appearance, giving Craft a rustic “joie de vivre.”



FreeStyle Plate  
**0501**  
L 14 5/8" W 9 5/8"



FreeStyle Plate  
**0520** L 12" W 10 7/8"  
**0521** L 10" W 8 1/8"  
**0522** L 6" W 5 1/4"



Coupe Plate  
**0565** D 11 3/4" **0543** D 9"  
**0544** D 11" **0567** D 8"  
**0566** D 10" **0568** D 6"



Square Tray  
**0553**  
L W 10 1/2"



Rectangle Tray  
**0551** L 13 1/2" W 10 5/8"



Rectangle Tray  
**0556** L 13" W 7 1/2"



Rectangle Tray  
**0552** L 14 1/2" W 6 1/2"



Rectangle Tray  
**0550** L 10 5/8" W 6 1/2"





Coupe Bowl  
**0545** D 11 1/2" H 2" (2 qt)  
**0569** D 10" H 1 1/2" (1 1/8 qt)  
**0570** D 8 1/2" H 1 1/2" (27 oz)  
**0571** D 5" H 1" (4 oz)



FreeStyle Bowl  
**0523**  
 L 11" W 9 1/2" (32 oz)



Nouveau Bowl  
**0372**  
 D 10 5/8" H 2" (12 oz)



FreeStyle Bowl  
**0524**  
 L 7" W 5 1/2" H 2 1/2" (14 1/2 oz)  
**0525**  
 L 5" W 3 3/4" H 2 1/8" (4 oz)



Mandarin Bowl  
**0242**  
 D 5" (16 oz)



Club Sugar/Bouillon Cup  
**0379** D 3 7/8" H 2 1/8" (8 oz)  
 Slimline Double Well Saucer  
**0158** D 5 3/4"



Low Cup  
**0150** L 5 7/8" H 3 1/4" (16 oz)  
**0152** L 5 1/4" H 2 3/4" (12 oz)  
**0189** L 4 3/4" H 2 3/8" (8 oz)  
**0190** L 3 1/2" H 1 3/4" (3 oz)  
 Slimline Double Well Saucer  
**0225** D 6 1/2" (Fits 0150)  
**0158** D 5 3/4" (Fits 0152, 0189)  
**0165** D 4 5/8" (Fits 0190)



Stack Cup  
**0188** L 5" H 2 1/2" (10 oz)  
**0217** L 4 3/8" H 2 1/2" (7 oz)  
**0234** L 3 1/2" H 2" (3 1/2 oz)  
 Double Well Saucer  
**0158** D 5 3/4" (Fits 0188, 0217)  
**0165** D 4 5/8" (Fits 0234)



Quench Mug  
**0591**  
 L 4 1/2" H 4 3/4" (12 oz)  
**0592**  
 L 4 1/4" H 4 3/8" (10 oz)



Soup Bowl Base  
**B828**<sup>2</sup>  
 L 6 1/2" W 4 7/8" H 2 1/4" (15 oz)  
 Lid **0829**<sup>2</sup>



Decanter  
**11550283**<sup>1</sup>  
 L 5 7/8" H 9" (16 oz)



Club Teapot w/Lid  
**0367**  
 L 6 3/4" W 4 3/8" H 8" (15 oz)  
 Replacement Lid  
**0494**



Club Jug  
**0387**  
 L 5 1/2" W 4" H 3 1/4" (5 oz)



Pourer  
**0557**  
 L 3" H 2 7/8" (3 oz)



Taster Dip  
**0575**  
 D 2 1/2" H 1 1/4" (1 3/4 oz)



Salt Shaker  
**11550841** D 2 1/4" H 3"  
 Pepper Shaker  
**115508421** D 2 1/4" H 3"  
 Bud Vase  
**11550840** D 4" H 3 1/4"



Oblong Roaster  
**0331** L 14" W 12" H 2 1/8" (4 qt)  
**0342** L 12" W 10" H 2" (2 1/2 qt)



Casserole  
**0337** D 9 5/8" H 4 1/2" (3 1/4 qt)  
 Lid  
**0338** D 9 5/8"



Square Roaster  
**0329** L W 10" H 2" (2 qt)



Rectangular Tray  
**0366**  
 L 6 1/2" W 4 3/4" (17 1/2 oz)



Oval Sole Dish  
**0326**  
 L 11" W 7 1/2" H 2 1/8" (1 1/2 qt)  
**0327**  
 L 8 1/2" W 5 1/2" H 1 5/8" (19 oz)



Oval Eared Dish  
**0321** L 13 1/2" W 7 1/2" H 2 5/8" (1 qt)  
**0320** L 12" W 6 1/2" H 2 1/2" (27 1/2 oz)  
**0319** L 9 1/2" W 5 1/2" H 1 7/8" (12 1/2 oz)  
**0318** L 8" W 4 1/2" H 1 5/8" (6 1/2 oz)



Round Eared Dish  
**0317** L 8 1/2" H 2" (27 1/2 oz)  
**0316** L 7 1/2" H 1 7/8" (19 oz)  
**0191** L 5 3/4" H 1 5/8" (6 1/2 oz)



Presentation Pan  
**0866**  
 L 10" W 7" (1 qt)



Soup Bowl Base  
**B828**  
 L 6 1/2" W 4 7/8" H 2 1/4" (15 oz)  
 Lid **0829**



Oval Baker  
**0400**  
 L 6 1/4" (13 oz)  
 Lipped Oval Baker  
**0328**  
 L 6 1/4" W 3 1/2" H 2" (13 oz)

*craft cookware*

<sup>1</sup>Denotes items only available in 1155 White <sup>2</sup>Denotes items only available in 1131 Green and 1155 White

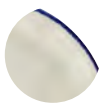
Due to the unique hand-decorated design, each item will be slightly different in color and texture from images shown. All product shapes are not available in all colors. D=Diameter L=Length W=Width H=Height • All products are measured at max capacity (oz). For further details contact your customer service rep.



Blue Dapple Oval Coupe Platter 17100145 L 13 1/2" W 10 5/8" 17100139 L 8" W 6 3/8" Varick Avina 18/0

***retro rustic revival***

Simple yet exciting, Blue Dapple, Brown Dapple and Charcoal Dapple's soft white body and bold rim add both a rustic and contemporary feel for your food service presentation. This enamelware-inspired collection looks amazing on its own, or mix and match with other patterns to create the perfect look for your tabletop.



1710  
Blue Dapple



1714  
Brown Dapple



1756  
Charcoal Dapple



*blue dapple*



Service/Chop Plate  
17100226 D 11 3/4"



Coupe Plate  
17100565 D 11 3/4" 17100543 D 9"  
17100544 D 11" 17100567 D 8"  
17100566 D 10" 17100568 D 6"



Slimline Plate  
17100209 D 10 5/8"  
17100211 D 9"  
17100212 D 8"  
17100214 D 6 1/4"



Pasta Bowl  
17100350  
D 11 3/4" H 1 1/2" (20 oz)



Slimline Soup Plate  
17100215  
D 8 1/2" H 1 1/4" (12 3/4 oz)



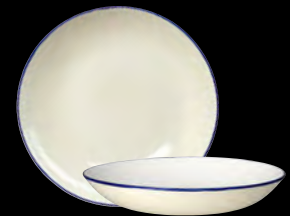
Oval Coupe Platter  
17100145 L 13 1/2" W 10 1/2"  
17100142 L 12" W 9 3/8"  
17100141 L 11" W 8 1/2"  
17100139 L 8" W 6 3/8"



Square Tray  
17100553 L W 10 1/2"



Rectangle Tray  
17100556 L 13" W 7 1/2"  
17100550 L 10 5/8" W 6 1/2"  
17100618 L 8" W 4"



Coupe Bowl  
17100569 D 10" H 1 1/2" (1 1/8 qt)  
17100570 D 8 1/2" H 1 1/2" (27 oz)  
17100571 D 5" H 1" (4 oz)



Oatmeal Bowl  
17100126  
D 6 1/2" H 2" (16 oz)



Fruit Dish  
17100131  
D 5 1/4" H 1 1/4" (4 1/2 oz)



Soup Cup Unhandled  
17100121  
D 4 1/4" H 2" (10 oz)



Soup Bowl Base  
1710B828  
L 6 1/2" W 4 7/8" H 2 1/4" (15 oz)



Club Sugar/Bouillon Cup  
17100379  
D 3 7/8" H 2 1/8" (8 oz)



Quench Mug  
17100592  
L 4 1/4" H 4 3/8" (10 oz)



Club Mug  
17100349  
L 4 1/2" H 3 3/4" (10 oz)



Unhandled Jug  
1710X0031  
L 2 1/2" H 2 3/8" (3 oz)



### *amplified food presentation*

Charcoal Dapple adds a new dynamic within this established and successful family. This black reactive decoration creates a strong and confident statement, giving chefs a fantastic platform, in which the food presentation is amplified. Charcoal Dapple is perfectly positioned to work with all other decorated and white tableware ranges which provides flexibility to bring through seasonal and menu changes.

### *charcoal dapple*



Coupe Plate  
**17560565** D 11 3/4" **17560543** D 9"  
**17560544** D 11" **17560567** D 8"  
**17560566** D 10" **17560568** D 6"



Oval Coupe Platter  
**17560145** L 13 1/2" W 10 5/8"  
**17560142** L 12" W 9 3/8"  
**17560141** L 11" W 8 1/2"  
**17560139** L 8" W 6 3/8"



Square Tray  
**17560553** L W 10 1/2"



Rectangle Tray  
**17560556** L 13" W 7 1/2"  
**17560550** L 10 5/8" W 6 1/2"  
**17560618** L 8" W 4"



Coupe Bowl  
**17560569** D 10" H 1 1/2" (1 1/8 qt)  
**17560570** D 8 1/2" H 1 1/2" (27 oz)  
**17560571** D 5" H 1" (4 oz)



Soup Bowl Base  
**1756B828**  
L 6 1/2" W 4 7/8" H 2 1/4"  
(15 oz)



Club Sugar/Bouillon Cup  
**17560379**  
D 3 7/8" H 2 1/8"  
(8 oz)



Quench Mug  
**17560592**  
L 4 1/4" H 4 3/8"  
(10 oz)



Unhandled Jug  
**1756X0031**  
L 2 1/2" H 2 3/8"  
(3 oz)



*simple yet exciting*

Rustic & minimal at the same time, Brown Dapple blends effortlessly with the Craft offering and allows new and refreshed presentations to emerge. Cool coupes and stacking bowls help deliver elevated styles of food with a functionality that is practical for today's busy kitchens and fast pace service.

*brown dapple*



Coupe Plate  
**17140565** D 11 3/4" **17140543** D 9"  
**17140544** D 11" **17140567** D 8"  
**17140566** D 10" **17140568** D 6"



Slimline Plate  
**17140209** D 10 5/8"  
**17140211** D 9"  
**17140212** D 8"  
**17140214** D 6 1/4"



Oval Coupe Platter  
**17140145** L 13 1/2" W 10 5/8"  
**17140142** L 12" W 9 3/8"  
**17140141** L 11" W 8 1/2"  
**17140139** L 8" W 6 3/8"



Square Tray  
**17140553** L W 10 1/2"



Rectangle Tray  
**17140556** L 13" W 7 1/2"  
**17140550** L 10 5/8" W 6 1/2"  
**17140618** L 8" W 4"



Coupe Bowl  
**17140569** D 10" H 1 1/2" (1 1/8 qt)  
**17140570** D 8 1/2" H 1 1/2" (27 oz)  
**17140571** D 5" H 1" (4 oz)



Oatmeal Bowl  
**17140126**  
 D 6 1/2" H 2"  
 (16 oz)



Fruit Dish  
**17140131**  
 D 5 1/4" H 1 1/4" (4 1/2 oz)



Soup Cup Unhandled  
**17140121**  
 D 4 1/4" H 2" (10 oz)



Soup Bowl Base  
**1714B828**  
 L 6 1/2" W 4 7/8" H 2 1/4"  
 (15 oz)



Club Sugar/Bouillon Cup  
**17140379**  
 D 3 7/8" H 2 1/8"  
 (8 oz)



Quench Mug  
**17140592**  
 L 4 1/4" H 4 3/8"  
 (10 oz)



Unhandled Jug  
**1714X0031**  
 L 2 1/2" H 2 3/8"  
 (3 oz)