

# Inspirations

SPRING 2023



**steelite**  
INTERNATIONAL

THE ART OF PRESENTATION





You're not just setting a table. You're creating an experience, telling a story, sharing a culture – and food is at the heart of it. Food brings people together and connects them to tradition and inspiration.

At Steelite, we believe that tableware should do more than serve your food – it should serve your vision. We design, craft and curate the very best in tableware for chefs and concepts across the globe.

Partnering to create an unmatched range of inspired tabletop experiences where shape, color, texture, light and weight combine to feed the senses. Helping our customers set the stage for their menus and their brands. Elevating presentation to an art.



**THE ART OF PRESENTATION**



Steelite International is the leading designer, marketer, manufacturer, and supplier of award-winning tabletop, lighting & buffet solutions for the hospitality industry. Dual headquarters, located in New Castle, PA, and Stoke-On-Trent, UK, along with a 500,000 square foot manufacturing facility and twelve showrooms worldwide, enables us to service over 140 countries for more than 50 years. We are committed to providing the best in functionality and design while minimizing the effect on our environment. For more information, please visit [www.steelite.com](http://www.steelite.com).

### ***steelite dinnerware***

STEELITE INTERNATIONAL *performance* 8

### ***ceramic dinnerware***

WILLIAM EDWARDS *fine bone china & tea stands* 10

FOLIO *bone china* 18

FOLIO *alpha-ceram* 22

FIESTA DINNERWARE *china* 24

VARICK *porcelain* 26

### ***melamine & glass dinnerware***

CREATIONS *melamine* 28

### ***glassware***

WILLIAM EDWARDS 32

RONA 34

BORMIOLI ROCCO 36

RCR CRYSTAL 40

### ***flatware***

ROBERT WELCH 52

FOLIO 53

### ***table accessories***

CREATIONS BY DE LA ROCA *maritime* 54

ROBERT WELCH *drift* 56

WILLIAMSBURG METALWORKS *caviar accessories* 58

GENWARE *vintage* 60

### ***table lighting***

HOLLOWICK *art glass votives* 62

### ***buffet***

D.W. HABER *ice cell* 64

D.W. HABER *power cell* 65

FOLIO *alpha-ceram* 66

CREATIONS *pompeii buffet* 70

MOGOGO *roll'n carts* 72





**MICHAEL VITIELLO** OWNER / CHEF • *Ristorante MV* Bernardsville, NJ

The dining experience has many factors. To make it more than just an experience and make it a memorable one, theatre and details are a key factor; WE PRIDE OURSELVES ON THAT. Ristorante MV is an evolution from our roots in Brooklyn, NY, as a classical Italian restaurant, to a destination in New Jersey that many people wait months to experience. High-quality products and spirits are essential and showcased by the vessel. When we built MV, the glasses we used were very important to us. A drink does more than get you buzzed; it puts on a show. Working with Steelite, they helped us find glasses that opened the curtain to MV's cocktail program. From Steelite's elaborate collection, we selected glasses that are made in Italy. We take pride in representing our culture, and these glasses allow us to do so with every drink we PROUDLY serve.

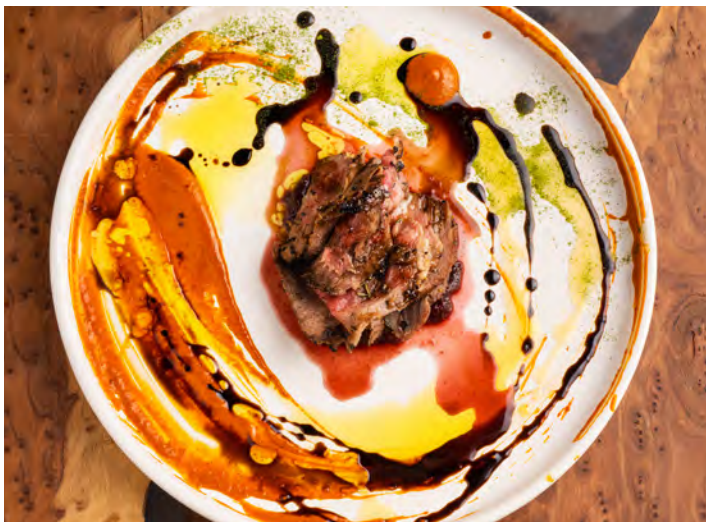




**SHELBY FARRELL** CHEF DE CUISINE • *Four Flamingos in the Hyatt Regency Grand Cypress Resort Orlando, FL*

My affinity for Steelite began when I first participated in culinary competitions. I came to appreciate the art of picking the perfect dish and how pairing food and a plate could be pivotal in the final experience, like traditional high art, where the frame one chooses requires as much thought and consideration as the artwork. Steelite has and always will provide me with the perfect framework to add that "je ne sais quoi" that elevates my food to the next level.





**MICHAEL CROUCH** CHEF • *Watch Hill Proper Louisville, KY*

After years in the industry and a long-time user of Steelite, I know a great product when I put my hands on it. In addition to the superb craftsmanship and durability, Steelite has really put all their chips in by showcasing truly creative design and color that brings even more visual appreciation to dishes I present to my guest. Whether it be classical, rustic, elegant or modern, Steelite has it, and so should you.





**MAX ENNAMANY** DIVISIONAL VICE PRESIDENT, CORPORATE BEVERAGE, LANDRY'S INC.

*Chart House, Landry's Inc. Annapolis, MD*

Beverage programming has never been more exciting than it is right now. Great innovation, exotic and fresh ingredients, and unique ice forms are all elements to help wow consumers. But, all can be lost if not presented in the right vessel. Steelite is a company who has kept up with those trends with their cutting-edge designs and forward thinking, fully aware of how important glassware is to the cocktail, beer, and wine industry.





### *simple, yet sophisticated*

The Nordic region has become synonymous with a chef's skill in utilizing the very best local ingredients to develop a dish, and then presenting them in a sympathetic and contemporary manner. Such an important culinary aesthetic deserves its own platform, and the Nordic range encompasses these shared design values. The simple yet sophisticated plate profile & strikingly irregular-shaped trays allow the chef space to present dishes that can 'breathe' while simultaneously being framed by a deep, gently curving rim. The result is a beautiful surface to showcase some of the most innovative and influential cuisine.





Nordic Coupe  
**11070634**  
D 10" H 1"



Nordic Coupe  
**11070631**  
D 8" H 1"



Nordic Coupe  
**11070630**  
D 6" H 1"



Nordic Tray **NEW**  
**11070640**  
L 13 1/2"



Nordic Tray **NEW**  
**11070641**  
L 11 1/2"



Nordic Tray **NEW**  
**11070642**  
L 9 1/2"





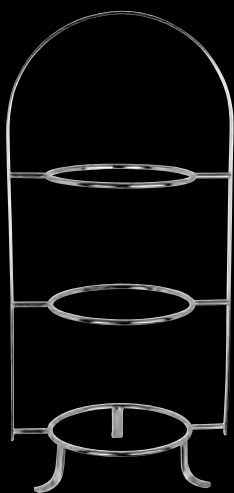
*create a beautiful & luxurious tabletop*

Complete your five-star dining experience with fine bone china, elegant tea stands, and luxury glassware from William Edwards. A renowned brand that offers a wide range of high-quality products, William Edwards is known for their attention to detail and using only the finest materials to create their products, resulting in a truly luxurious feel. Exquisitely designed and crafted to the highest standards, William Edwards' products are sure to impress & delight your guests.

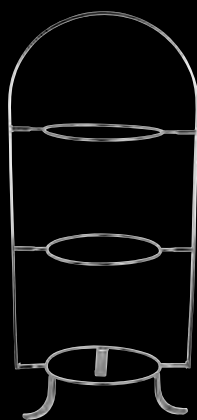


*elevate your tabletop rituals*

A charming centerpiece for pastries or afternoon tea, these elegant tea stands from William Edwards are guaranteed to impress. Exquisitely crafted from polished stainless steel, a striking collection of two and three-tiered stands are designed to adorn a luxurious dining or serving table.



3-Tier Tea Stand Large  
**82000AND10SS**  
L 11 7/8" W 9 5/8" H 18 7/8"  
Stainless Steel  
Fits 8 3/4" Plates



3-Tier Tea Stand Small  
**82000AND102T**  
L 7 1/2" W 5" H 16"  
Stainless Steel  
Fits 6 1/2" Plates



2-Tier Tea Stand  
**82000AND10LS**  
L 8 5/8" W 4 7/8" H 4 3/4"  
Stainless Steel  
Fits 6 1/2" Plates







### *distinctive exotic style*

Sultan's Garden will bring a distinctive touch of exotic style to your table. This striking range features vibrant paradisaal gardens, with illustrations of gazelles, lions and monkeys playing beneath palms and cypress trees, all inspired by early near Eastern ceramic artwork.



WILLIAM EDWARDS *sultan's garden*WILLIAM  
EDWARDS  
ENGLAND

Coupe Plate  
**82112AND0244**  
D 10 1/2"



Coupe Plate  
**82112AND0163**  
D 8 1/4"



Coupe Plate  
**82112AND0421V1**  
D 6 1/2"



Coupe Plate  
**82112AND0421V2**  
D 6 1/2"



Butter Dish  
**82112AND0295**  
D 4 3/8"



Oval Rim Deep Platter  
**82112AND0322**  
L 13 3/4" W 11"



Bowl  
**82112AND0441**  
D 9 1/2" H 2"  
(21 oz)



Bowl  
**82112AND0150A**  
D 9 1/4" H 3 1/4"  
(2 qt)



Bowl  
**82112AND0332**  
D 5 3/4" H 2 1/8"  
(12 1/4 oz)



Condiment Pot  
**82112AND0249**  
D 2 1/2" H 1 1/4"  
(1 3/4 oz)



Mug  
**82112AND0281V1**  
L 5" W 3 1/2"  
(12 1/4 oz)



Mug  
**82112AND0281V2**  
L 5" W 3 1/2"  
(12 1/4 oz)



Coffee Can  
**82112AND0112V1**  
L 3 3/8" W 2 1/2" H 2 1/2"  
(3 1/2 oz)  
Espresso Saucer  
**82112AND0152V1** D 4 3/4"



Coffee Can  
**82112AND0112V2**  
L 3 3/8" W 2 1/2" H 2 1/2"  
(3 1/2 oz)  
Espresso Saucer  
**82112AND0152V2**  
D 4 3/4"



Tea Cup Can  
**82112AND0110**  
L 4 3/8" W 3 1/2" H 2 1/2"  
(7 oz)  
Saucer  
**82112AND0211** D 6 3/8"



Tea For One Cup  
**82112AND0411A**  
H 2 1/2" (9 oz)  
Tea For One Saucer  
**82112AND0169** D 5 1/2"



Tea For One Teapot  
**82112AND0411B**  
H 5" (16 oz)  
Teapot Lid  
**82112AND0411BL**



Tea For One Set  
**82112AND0411**  
Teapot, Teacup & Saucer



Oval Teapot  
**82112AND0337**  
L 4" (19 3/8 oz)  
Teapot Lid  
**82112AND0337L**



Milk Jug  
**82112AND0340**  
L 3 1/2"  
(7 3/4 oz)



Oval Sugar Bowl  
**82112AND0335**  
H 3 1/2" (8 oz)  
Oval Covered Sugar Lid  
**82112AND0341**

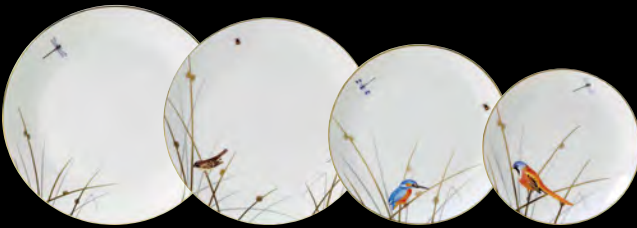




*an elegant pattern on a bone china canvas*

The Reed design is inspired by the natural beauty of the English countryside. The range includes special hand-painted illustrations of iconic English birdlife, including the Kingfisher, Reed Bunting and Lapwing. As a final flourish, 24-carat gold edging adds an extra sense of luxury.





Coupe Plate  
**82108AND0419**  
D 11 3/4"

Coupe Plate  
**82108AND0244**  
D 10 1/2"

Coupe Plate  
**82108AND0163**  
D 8 1/4"

Coupe Plate  
**82108AND0421**  
D 6 1/2"



Rectangle Tray  
**82108AND0136**  
L 13 3/8" W 6"



Bowl  
**82108AND0441**  
D 9 1/2" H 2"  
(21 oz)



Bowl  
**82108AND0332**  
D 5 3/4" H 2 1/8"  
(12 1/4 oz)



Condiment Pot  
**82108AND0249**  
L 1 3/8" H 2 1/2"  
(1 3/4 oz)



Mug  
**82108AND0281**  
L 5" W 3 1/2"  
(12 1/4 oz)



Tea Cup Footed  
**82108AND0106**  
L 4 3/4" W 3 1/2" H 2 3/4" (8 oz)  
Tea Saucer/Soup Stand  
**82108AND0107** D 6 3/8"



Espresso Cup Footed  
**82108AND0145**  
L 3 5/8" W 2 5/8" H 2 1/2" (3 oz)  
Espresso Saucer  
**82108AND0146** D 4 3/4"



Tea For One Cup  
**82108AND0411A**  
L 5" W 4" H 2 1/2" (9 oz)  
Tea For One Saucer  
**82108AND0169** D 5 3/4"



Tea For One Teapot  
**82108AND0411B** H 5" (16 oz)  
Tea For One Teapot Lid Only  
**82108AND0411BL**



Tea For One Set  
**82108AND0411**  
Teapot, Teacup & Saucer



Teapot 4 Cup  
**82108AND0415**  
H 6 1/2" (28 oz)  
Teapot 4 Cup Lid Only  
**82108AND0213**



Milk Jug  
**82108AND0120**  
H 4 1/2"  
(9 oz)



Covered Sugar  
**82108AND0119**  
D 4 1/2" (9 oz)  
Covered Sugar Lid Only  
**82108AND0220**





### *sophistication in fine dining*

By blending burnished gold and gold mica, along with an intricate white design, the Diamond collection of tableware exudes a sense of refinement and elegance that is ideal for various hospitality settings. The collection's geometric pattern adds to its sophisticated appeal, making it the perfect choice for upscale properties around the globe.



Plate  
**82115AND0101V1** D 11 3/4"  
**82115AND0102V1** D 10 3/4"



Plate  
**82115AND0101V2** D 11 3/4"  
**82115AND0102** D 10 3/4"  
**82115AND0103** D 8 3/4"



Plate  
**82115AND0104**  
D 6 1/2"



Rectangle Tray  
**82115AND0136**  
L 13 3/8" W 6"



Large Rim Bowl  
**82115AND0132**  
D 11" H 2 1/8" (21 oz)  
Rim Bowl  
**82115AND0105**  
D 8 3/4" H 1 3/8" (8 oz)



Bowl  
**82115AND0332**  
D 5 3/4" H 2 1/8"  
(12 1/4 oz)



Condiment Pot  
**82115AND0249**  
L 1 3/8" H 2 1/2"  
(1 3/4 oz)



Mug  
**82115AND0281**  
H 3 1/2"  
(12 1/4 oz)



Tea Cup Can  
**82115AND0110**  
L 4 3/8" W 3 1/2" H 2 1/2"  
H 3 1/4" (7 oz)  
Saucer  
**82115AND0211** D 6 3/8"



Coffee Can  
**82115AND0112**  
L 3 1/4" W 2 3/8" H 2 1/4"  
(3 1/2 oz)  
Espresso Saucer  
**82115AND0152** D 4 3/4"



Oval Teapot 2 Cup  
**82115AND0337**  
H 4" (19 1/4 oz)  
Oval Teapot 2 Cup Lid Only  
**82115AND0337L**



Connoisseur Beverage Pot  
**82115AND0542**  
(15 1/4 oz) Includes Teapot Infuser  
Connoisseur Beverage Pot Lid Only  
**82115AND0542L**



Milk Jug  
**82115AND0340**  
H 3 1/2" (7 3/4 oz)



Oval Sugar  
**82115AND0335**  
H 3 1/2" (8 oz)  
Oval Sugar Lid  
**82115AND0341**





### hand-burnished gold edging

Burnished Gold brings a new level of luxurious detail to a classic, understated design. The gold edging on every piece is hand-burnished, and carefully positioned to protect the line work from excessive wear. This is the perfect marriage of beauty and durability.



Plate  
**82107AND0101** D 11 3/4"  
**82107AND0102** D 10 3/4"  
**82107AND0103** D 8 3/4"  
**82107AND0104** D 6 1/2"



Rectangle Tray  
**82107AND0136**  
L 13 3/8" W 6"



Large Rim Bowl  
**82107AND0132**  
D 11" H 2 1/8"  
(21 oz)



Rim Bowl  
**82107AND0105**  
D 8 3/4" H 1 3/8"  
(8 oz)



Bowl  
**82107AND0332**  
D 5 3/4" H 2 1/8"  
(12 1/4 oz)



Condiment Pot  
**82107AND0249**  
D 2 1/2" H 2 1/2"  
(1 3/4 oz)



Mug  
**82107AND0281**  
H 3 1/2"  
(12 1/4 oz)



Tea Cup Footed  
**82107AND0106**  
L 4 3/4" W 3 1/2" H 2 3/4" (8 oz)  
Tea Saucer/Soup Stand  
**82107AND0107** D 6 3/8"



Tea For One Cup  
**82107AND0411A**  
L 5" W 4" H 2 1/2" (9 oz)  
Tea For One Saucer  
**82107AND0169** D 5 3/4"



Espresso Cup Footed  
**82107AND0145**  
L 3 5/8" W 2 5/8" H 2 1/4" (3 oz)  
Espresso Saucer  
**82107AND0146** D 4 3/4"



Tea For One Teapot  
**82107AND0411B** H 5" (16 oz)  
Tea For One Teapot Lid Only  
**82107AND0411BL**



Tea For One Set  
**82107AND0411**  
Teapot, Teacup & Saucer



Teapot 4 Cup  
**82107AND0415**  
H 6 1/2" (28 oz)  
Teapot 4 Cup Lid Only  
**82107AND0213**



Milk Jug  
**82107AND0120**  
H 4 1/8"  
(9 oz)



Covered Sugar  
**82107AND0119**  
D 4 1/2" (9 oz)  
Covered Sugar Lid Only  
**82107AND0220**





***elegant bone china for high volume banqueting***

Introducing Folio Lucia, strategically designed bone china that keeps creative presentation and operational efficiency in mind. With a multi-dimensional radiant embossment that draws the eye inward towards the food, Lucia provides chefs with a canvas that best presents their dish as well as the opportunity to execute their culinary vision. A convenient one-size-fits-all 11" plate cover and slightly angled banquet rims promote seamless service in high volume operations by easing the burden on servers. Maximize your space, operational efficiency, and presentation opportunities with stacking plates, cups, and bowls from Lucia.





Chop Plate  
**4422RF024** D 12"



Banquet Rim Plate  
**4422RF001** D 11" (7" Well)  
(Plate Cover 5379S801)  
**4422RF003** D 10"  
**4422RF004** D 9"  
**4422RF005** D 8"  
**4422RF006** D 6 1/2"



Wide Rim Presentation Plate  
**4422RF002**  
D 11" (6 1/2" Well)  
(Plate Cover 5379S801)



Coupe Plate **NEW**  
**4422RF046** D 11"  
(Plate Cover 5379S801)  
**4422RF042** D 9"  
**4422RF043** D 7 1/4"  
**4422RF070** D 6" Fully Embossed



Oval Coupe Platter **NEW**  
**4422RF047** L 12 1/2" W 9"  
**4422RF044** L 9" W 6 3/8"



Deep Presentation Plate  
**4422RF009**  
D 11" H 1 3/8" (8" Well)  
(Plate Cover 5379S801)



Deep Coupe Pasta Bowl  
**NEW**  
**4422RF075**  
D 10" H 2" (1 1/2 qt)  
Fully Embossed



Wide Rim Pasta Plate  
**4422RF017**  
D 11" H 1 7/8" (6 1/2" Well)  
(16 oz)  
(Plate Cover 5379S801)



Rim Presentation Bowl  
**4422RF007**  
D 11" H 2 1/8" (10 oz)  
(Plate Cover 5379S801)



Wide Rim Presentation Bowl  
**4422RF010**  
D 11" H 2" (6 1/2" Well)  
(Plate Cover 5379S801)



Rim Soup  
**4422RF008**  
D 9 1/2" H 1 3/4"  
(14 oz)



Oatmeal Bowl  
**4422RF011**  
D 6 1/2" H 2" (16 oz)



Unembossed Rim Fruit  
**4410RF012**  
D 5 1/8" H 1 1/2" (5 oz)



Stack Soup Cup  
**4422RF014**  
D 4 1/4" H 2 3/8" (10 oz)  
Saucer  
**4422RF016** D 5 7/8"



Unembossed  
Sugar/Bouillon Cup  
**4410RF013**  
D 4" H 2 1/4" (8 oz)  
Saucer  
**4422RF016** D 5 7/8"



Stack Cup  
**4422RF015**  
L 4 1/8" W 3 1/8"  
H 2 1/2" (8 oz)  
Saucer  
**4422RF016** D 5 7/8"



Stack Mug  
**4422RF023**  
L 4 5/8" W 3 1/4"  
H 3 3/4" (12 oz)





*elegant bone china*

Elevate your banquet service with Ruche. A full rimmed embossment with the feel of flowing layers of satin, Ruche brings romance and elegance to any tabletop presentation. The luminosity of the bone china combined with the functionality of the coupe rims produces a striking well-designed backdrop for food presentation.





Banquet Rim Plate  
**4412RF001**  
D 11" (7" Well)  
(Plate Cover 5379S801,  
5379S796, 5379S804)  
**4412RF003** D 10"  
**4412RF004** D 9"  
**4412RF005** D 8"  
**4412RF006** D 6 1/2"



Chop Plate  
**4412RF024**  
D 12"



Wide Rim  
Presentation Plate  
**4412RF002**  
D 11" (6 1/2" Well)  
(Plate Cover 5379S801)



Coupe Plate  
**NEW**  
**4412RF046** D 11"  
(Plate Cover 5379S801)  
**4412RF042** D 9"  
**4412RF043** D 7 1/4"  
**4412RF070** D 6" Fully Embossed



Oval Coupe Platter  
**NEW**  
**4412RF047**  
L 12 1/2" W 9"  
**4412RF044**  
L 9" W 6 3/8"



Deep Coupe Pasta Bowl  
**NEW**  
**4412RF075**  
D 10" H 2" (1 1/2 qt)  
Fully Embossed



Deep Presentation Plate  
**4412RF009**  
D 11" H 1 5/8" (8" Well)  
(Plate Cover 5379S801)



Wide Rim Pasta Plate  
**4412RF017**  
D 11" H 1 7/8"  
(6 1/2" Well) (16 oz)  
(Plate Cover 5379S801,  
5379S804)



Rim Presentation Bowl  
**4412RF007**  
D 11" H 2 1/8" (10 oz)  
(Plate Cover 5379S801,  
5379S804)



Wide Rim  
Presentation Bowl  
**4412RF010**  
D 11" H 2" (6 1/2" Well)  
(Plate Cover 5379S801,  
5379S804)



Rim Soup Bowl  
**4412RF008**  
D 9 1/2" H 1 3/4"  
(14 oz)



Oatmeal Bowl  
**4412RF011**  
D 6 1/2" H 2" (16 oz)



Unembossed Rim Fruit  
**4410RF012**  
D 5 1/8" H 1 1/2" (5 oz)



Stack Soup Cup  
**4412RF014**  
D 4 1/4" H 2 3/8" (10 oz)  
Saucer  
**4412RF016** D 5 7/8"



Unembossed Sugar/  
Bouillon Cup  
**4410RF013**  
D 4" H 2 1/4" (8 oz)  
Saucer  
**4412RF016** D 5 7/8"



Stack Cup  
**4412RF015**  
L 4 1/8" H 2 1/2" (8 oz)  
Saucer  
**4412RF016** D 5 7/8"



Ruche Stack Mug  
**4412RF023**  
L 4 5/8" W 3 1/4"  
H 3 3/4" (12 oz)





*add a warm patina to your tabletop*

Inspired by the art & definition of a patina, this incredibly unique dinnerware pattern features a beautiful blend of browns & splashes of bronze. Coated with a reactive matte glaze, Patina is made of a fortified porcelain that provides a thin & sleek look for the tabletop. Comprised of organic and coupe-style shapes, this collection will 'patina' over time and serve a desirable presentation that's both rustic and contemporary.





Plate  
**6965E6154**  
D 11 1/4"



Plate  
**6965E6155**  
D 9"



Plate  
**6965E6156**  
D 6 5/8"



Platter  
**6965E6163**  
L 13" W 7"



Bowl  
**6965E6157**  
D 10" H 2 3/8"  
(1 1/4 qt)



Bowl  
**6965E6161**  
D 10 1/4" H 3 1/8"  
(1 3/4 qt)



Bowl  
**6965E6158**  
D 8 3/4" H 2 3/8"  
(1 qt)



Bowl  
**6965E6159**  
D 6 1/2" H 2 1/8"  
(13 1/2 oz)



Dish  
**6965E6160**  
D 3 1/8" H 1 3/8"  
(2 1/2 oz)



Mug  
**6965E6162**  
L 3 1/2" W 4 3/4" H 3 3/8"  
(10 3/4 oz)



Ramekin  
**6965E6164**  
D 3 1/8" H 1 3/4"  
(4 oz)



Sauce Jug  
**6965E6165**  
L 2 7/8" W 2" H 3 7/8"  
(4 oz)





## FIESTA DINNERWARE

IVORY BODY



### *an american icon™*

One of the most collected dinnerware products in the world, the Fiesta® line was designed by Frederick Hurten Rhead and introduced to the American public by The Homer Laughlin China Company® in 1936. A.V. Bleininger brought the bright hues to the forefront, further popularizing the line. Introduced initially in just five colors, Fiesta was an unprecedented sensation. Today, Fiesta continues to add unparalleled character and vibrance to every table. Fourteen bold colors complement each other beautifully and can be mixed and matched with different shapes to ramp up or dial down the color range to suit your unique presentation or culinary whims. Fiesta's classic—and now famous—Art Deco design, with its concentric rings and stunning colors, making it the quintessential statement of retro American style.

NEW



343  
Mulberry



347  
Peony



326  
Scarlet



338  
Poppy



345  
Butterscotch



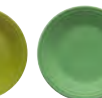
342  
Daffodil



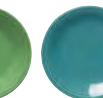
320  
Sunflower



332  
Lemongrass



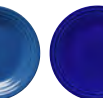
344  
Meadow



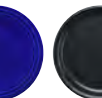
107  
Turquoise



337  
Lapis



346  
Twilight



20000  
Foundry



100  
White





Pizza Plate  
**HL575** D 12"



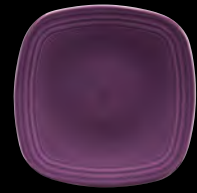
Plate  
**HL467** D 11 3/4"  
**HL466** D 10 1/2"  
(Plate Cover 5379S795)  
**HL465** D 9"  
**HL464** D 7 1/4"  
**HL463** D 6 1/8"



Bistro Dinner Plate  
**HL1480** D 10 1/2"  
Bistro Salad Plate  
**HL1481** D 7 1/4"  
Appetizer Plate  
**HL1461** D 6 5/8"



Plate  
**HL749** D 9"



Square Plate  
**HL920** Lunch L W 9 1/4"  
**HL921** Salad L W 7 1/2"



Platters  
**HL458** L 13 5/8" W 9 1/2"  
**HL457** L 11 5/8" W 8 7/8"  
**HL456** L 9 5/8" W 6 3/4"



Bread Tray  
**HL412**  
L 11 7/8" W 5 5/8" H 1 1/2"



Pie Baker  
**HL487**  
D 10 3/8" H 2 1/16"  
(31 oz)



Pasta Bowl  
**HL462**  
D 12"  
(21 oz)



Bistro Bowls  
**HL1472** D 10 1/2" H 3 3/8" (3 qt)  
**HL1459** D 9 3/8" H 3 1/8" (2 qt)  
**HL1458** D 7 5/8" H 2 5/8" (1 qt)



Bowls  
**HL455** D 10 1/2" H 3" (2 1/2 qt)  
**HL471** D 8 1/4" H 2 3/4" (1 1/4 qt)  
**HL461** D 6 7/8" H 1 7/8" (19 oz)  
**HL460** D 5 5/8" H 1 7/8" (14 1/4 oz)



Bowl Plate **NEW**  
**HL1507** D 10 3/8" H 1 3/8"  
**HL1511** D 8 1/2" H 1 3/8"



Pedestal Bowl  
**HL765**  
D 9 7/8" H 3 3/8"  
(2 qt)



Gusto Bowl  
**HL723**  
D 6" H 3 1/8"  
(28 oz)



Chowder Bowl  
**HL576**  
D 5 7/8" H 2 3/8"  
(22 oz)



Chili Bowl  
**HL098**  
D 4 5/8" H 3 1/2"  
(18 oz)



Rim Soup Bowl  
**HL451**  
D 9" H 1 1/2"  
(13 1/4 oz)



Oval Baker  
**HL587**  
L 9 1/4" W 5 5/8" H 2"  
(13 oz)



Fruit/Salsa Bowl  
**HL1489**  
D 5" H 1 3/4"  
(9 oz)



Stacking Cereal Bowl  
**HL472**  
D 6 1/2" H 1 5/8"  
(11 oz)



Fruit Bowl  
**HL459**  
D 5 3/8" H 1 1/4"  
(6 1/4 oz)



Bouillon  
**HL450**  
D 4" H 2 1/4"  
(6 3/4 oz)



Ramekin  
**HL568**  
D 4" H 2 1/4"  
(8 oz)



Cup  
**HL452**  
L 3 1/2" H 2 3/4" (7 3/4 oz)  
Saucer  
**HL470** D 5 7/8"



Java Mug  
**HL570**  
L W 3 1/2" H 3 5/8"  
(12 oz)



Tapered Mug  
**HL1475**  
L W 4 1/8" H 4"  
(15 oz)



Tapered Mug  
**HL1519**  
L W 3 3/8" H 3 3/8"  
(16 oz)



Mug  
**HL453**  
L H 3 1/2"  
(10 1/4 oz)



Disc Pitchers  
**HL484** L 11 1/2" W 4 1/4" H 7 1/4" (2 qt)  
**HL485** L 6 1/4" W 3 3/8" H 5 5/8" (28 oz)  
**HL475** L 3 3/8" W 1 3/4" H 3 1/4" (5 oz)



Sugar Packet  
**HL479** L 3 1/2"  
W 2 5/8" H 2 1/4"



Salt/Pepper Set  
**HL497** L 2 1/4" H 2 5/8" (3 oz)  
**HL750** Salt Shaker  
**HL751** Pepper Shaker  
**HL899** Stopper



Sugar/Cream Tray Set  
**HL821**  
L 9 7/8" W 4 3/4"  
H 4 1/4"



Sauceboat  
**HL486**  
L 8" H 4 1/2"  
(18 1/2 oz)





*the contemporary choice*

A well-rounded balance of coupe plates, bowls, trays, and mugs make up the Varick Bistro collection. Cost-friendly, modern, and unique, Bistro is a perfect addition to any tabletop.





Coupe Plate  
**6900E439** D 11 3/4"  
**6900E440** D 10 1/4"  
**6900E441** D 8"  
**6900E442** D 5 3/4"



Oval Coupe Plate  
**6900E410** L 10" W 7 1/2"  
**6900E409** L 8" W 6"



Large Oval Plate **NEW**  
**6900E5037**  
 L 10 3/4" W 6 5/8"  
 Small Oval Plate  
**6900E5038**  
 L 7 3/8" W 5 1/4"



Casserole **NEW**  
**6900E5039**  
 L 6 7/8" W 5" H 1 1/4"  
 (10 oz)



Oval Bowl  
**6900E588** L 10" W 6 1/4" H 2 3/4" (30 oz)  
**6900E587** L 8" W 5" H 2 1/4" (15 1/2 oz)  
**6900E586** L 6" W 3 3/4" H 1 3/4" (7 oz)  
**6900E585** L 4" W 2 1/2" H 1 1/8" (1 3/4 oz)



Cereal Bowl  
**6900E517**  
 D 7" H 2 1/8"  
 (16 oz)



Noodle Bowl  
**NEW**  
**6900E5040**  
 D 5 5/8" H 3"  
 (22 oz)



Rice Bowl  
**6900E550**  
 D 5 1/2" H 2 1/2" (16 oz)  
**6900E551**  
 D 4 1/4" H 2" (8 oz)



Bouillon Cup  
**6900E428**  
 D 4" H 2 1/4"  
 (7 1/2 oz)  
 (Fits E530)



Form Fruit Dish  
**6900E575**  
 D 4 3/8" H 1 1/2"  
 (4 3/4 oz)



Oval Tray  
**6900E401**  
 L 7 1/4" W 5 1/8"



Symphony Cup  
**6900E509** L 4 3/8" H 3"  
 (7 oz)  
 Saucer Double Well  
**6900E530** D 6 1/4"



Espresso Cup **NEW**  
**6900E5043**  
 L 3 1/2" W 2 3/4" H 1 7/8"  
 (3 3/4 oz)  
 Espresso Saucer **NEW**  
**6900E5042** D 5"



Coupe Mug  
**6900JH6056**  
 L 5 1/4" H 4 1/8"  
 (15 1/2 oz)



Mug  
**6900E438**  
 L 4 3/4" H 4 3/4" (12 oz)  
**6900E584**  
 L 4" H 4 3/8" (10 oz)



Mug  
**6900E469**  
 L 4 1/2" W 3" H 4 3/8"  
 (11 oz)



Mug **NEW**  
**6900E5041**  
 L 4 1/4" W 3 1/8" H 3 3/4"  
 (10 1/2 oz)



Form Mug  
**6900E437** L 4 3/4" H 3 7/8" (13 oz)  
**6900E574** L 4 1/2" H 3 3/4" (9 oz)  
 Saucer Double Well  
**6900E530** D 6 1/4" (Fits E437, E574)





*resilient and stylish melamine*

Salinas offers a wide range of cultural experiences, much like the careful arrangement of ingredients on a plate. Portraying concentric rings around the rim and a neutral shade of taupe with russet-colored accents, this resilient and lightweight melamine dinnerware is perfect for waterfront, rooftop and patio dining, adding convenience and style to any gathering.





Coupe Plate  
**7178TM708**  
D 11 1/2"



Plate  
**7178TM702**  
D 9"



Plate  
**7178TM701**  
D 6 1/2"



Oval Plate  
**7178TM707**  
L 14" W 8 1/8"



Bowl  
**7178TM706**  
D 9 1/2" H 2" (1 1/2 qt)



Bowl  
**7178TM704**  
D 7" H 2 5/8" (30 1/4 oz)



Bowl  
**7178TM705**  
D 5 3/8" H 2" (4 1/2 oz)



Bowl  
**7178TM703**  
D 4 3/4" H 1" (5 1/4 oz)





### *versatile dining*

Ideal for fast casual dining, this remarkable melamine dinnerware is perfect in any setting. Solano is available in two ornate patterns, Rubine & Azure, that flaunt whimsical imagery & intricate flourishes, providing a visually striking presentation for the tabletop. Its lightweight yet highly durable construction ensures it can handle anything from Mexican dishes to Mediterranean cuisines, adding a touch of distinction to the dining experience.



*rubine*



Rubine Plate  
**7123TM075**  
D 11"



Rubine Plate  
**7123TM074**  
D 9"



Rubine Plate  
**7123TM073**  
D 6 1/2"



Rubine Platter  
**7123TM076**  
L 14" W 8"



Rubine Bowl  
**7123TM072**  
D 9 3/8" H 2 1/2" (1 1/2 qt)



Rubine Bowl  
**7123TM071**  
D 7" H 2 7/8" (29 oz)

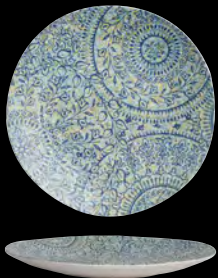


Rubine Bowl  
**7123TM070**  
D 5 1/2" H 2 1/8" (12 3/4 oz)



Rubine Bowl  
**7123TM069**  
D 3 3/4" H 1 5/8" (5 oz)

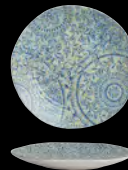
*azure*



Azure Plate  
**7124TM075**  
D 11"



Azure Plate  
**7124TM074**  
D 9"



Azure Plate  
**7124TM073**  
D 6 1/2"



Azure Platter  
**7124TM076**  
L 14" W 8"



Azure Bowl  
**7124TM072**  
D 9 3/8" H 2 1/2" (1 1/2 qt)



Azure Bowl  
**7124TM071**  
D 7" H 2 7/8" (29 oz)



Azure Bowl  
**7124TM070**  
D 5 1/2" H 2 1/8" (12 3/4 oz)



Azure Bowl  
**7124TM069**  
D 3 3/4" H 1 5/8" (5 oz)





*elevated beverage experience*

Complement any fine dining presentation with the elegance of William Edwards Glassware. This collection of stems is hand blown with precision, creating a glass that's perfectly lightweight and ideal for serving luxurious cocktails. Its minimalist design and crystal clear bowl allows the opportunity to be paired with a premium wine or spirit, creating an elevated beverage experience every time.





Universal Red  
**83000WE423**  
(18 3/4 oz)  
H 9 3/8" M 3 1/2"  
T 2 1/2" B 3 1/2"



White Wine  
**83000WE311**  
(15 1/2 oz)  
H 9" M 3 1/4"  
T 2 1/2" B 3 1/4"



Champagne Flute  
**83000WE746**  
(8 1/4 oz)  
H 9 1/2" M 3"  
T 2" B 3"



Long Stem Champagne Coupe  
**83000WE112**  
(9 1/2 oz)  
H 7 5/8" M 4 1/4"  
T 4 1/4" B 3 1/4"



Champagne Coupe  
**83000WE212**  
(5 3/4 oz)  
H 5 5/8" M 3 3/8"  
T 3 3/8" B 2 7/8"



Burgundy  
**83000WE660**  
(30 3/4 oz)  
H 9 1/4" M 4 7/8"  
T 2 3/4" B 3 7/8"



Bordeaux  
**83000WE321**  
(25 oz)  
H 9 1/2" M 4 1/4"  
T 2 7/8" B 3 1/2"



Long Stem Martini  
**83000WE354**  
(8 1/4 oz)  
H 8 5/8" M 4 1/8"  
T 4 1/8" B 3 1/4"



Nick & Nora  
**83000WE951**  
(4 3/4 oz)  
H 6 1/8" M 2 5/8"  
T 2 5/8" B 2 1/2"



Half Martini  
**83000WE351**  
(4 1/2 oz)  
H 4 3/4" M 3 1/8"  
T 3 1/8" B 2 3/8"





*a nod to mid-century modern design*

Characterized by clean simplicity with fresh and modern lines, Rona's Mode Collection is as captivating to the eyes as a unique wine is alluring to the palate. Wine glasses with square tapered bowls accentuate long, slender pulled stems creating a sophisticated contemporary look. Likewise, the simple, yet relevant barware trio boasts of modern design and intrigue.



Mode  
Bordeaux  
**4833R323**  
(23 oz)  
H 9 7/8" M 3 7/8"  
T 2 7/8" B 3 1/2"



Mode  
Wine  
**4833R324**  
(18 1/2 oz)  
H 9 1/8" M 3 5/8"  
T 2 3/4" B 3 1/4"



Mode  
Wine **NEW**  
**4833R330**  
(14 3/4 oz)  
H 9" M 3 1/2"  
T 2 1/2" B 3 1/8"



Mode  
Wine  
**4833R325**  
(12 1/4 oz)  
H 8 3/4" M 3 1/8"  
T 2 1/4" B 3"



Mode  
Highball  
**4833R329**  
(14 1/2 oz)  
H 5 3/8" M 2 7/8"  
T 2 3/8" B 2 7/8"



Mode  
DOF  
**4833R328**  
(13 3/4 oz)  
H 3 1/2" M 3 1/2"  
T 2 7/8" B 3 1/2"



Mode  
Shot Glass  
**4833R343**  
(3 oz)  
H 3 1/2" M 1 5/8"  
T 1 1/2" B 1 5/8"

*gramerci*



*hotel collection*

The Gramerci Hotel Collection is perfect for all hotel glassware needs, starting with banquets, which includes ideally sized red & white wine stems and water goblet that are incredibly priced for high volume service.



Gramerci  
All Purpose Red Wine  
**NEW**  
**4834R347**  
(22 oz)  
H 9" M 3 3/4"  
T 2 7/8" B 3 1/4"



Gramerci  
Wine  
**4834R344**  
(16 1/2 oz)  
H 8 1/2" M 3 3/8"  
T 2 1/2" B 3 1/8"



Gramerci  
Wine  
**4834R345**  
(11 1/2 oz)  
H 8 1/4" M 3"  
T 2 1/4" B 2 7/8"



Gramerci  
Water  
**4834R346**  
(16 oz)  
H 6 3/4" M 3 3/8"  
T 2 3/4" B 3 1/8"



Gramerci  
Martini **NEW**  
**4834R348**  
(6 oz)  
H 8 3/8" M 2 3/4"  
T 2 1/4" B 2 3/4"



Gramerci  
Champagne **NEW**  
**4834R349**  
(5 1/2 oz)  
H 8 3/8" M 2 3/4"  
T 2" B 2 3/4"





### *modern, uncompromising design*

The conical shape of Eclipse is designed to intensify the aroma of a drink by allowing the liquid to settle in the lower part of the glass and then released & intensified as it's tipped toward the lips. Ideal for beverages such as craft beer and delicate cocktails, Eclipse provides a modern design that accents a well-set tabletop presentation.



Eclipse  
Long Drink  
**480138R001**  
(16 1/4 oz)  
H 5 3/4" M 3 1/2"  
T 2 3/8" B 2 3/4"



Eclipse  
Double Old Fashion  
**480138R003**  
(16 oz)  
H 4" M 4"  
T 2 7/8" B 3"



Eclipse  
Old Fashion  
**480138R004**  
(12 3/4 oz)  
H 3 1/2" M 3 3/4"  
T 2 3/4" B 2 3/4"



Eclipse  
Juice Tumbler  
**480138R002**  
(12 1/4 oz)  
H 5 1/4" M 3"  
T 2 1/4" B 2"



Eclipse  
Mineral Water  
**480138R005**  
(9 3/4 oz)  
H 3 1/4" M 3 3/8"  
T 2 1/2" B 2 1/2"



Eclipse  
Shot Glass  
**480138R006**  
(2 oz)  
H 3 1/2" M 1 3/4"  
T 1 1/4" B 1"





### *in line with the latest trends*

Bormioli Rocco's "America '20s" is a collection of beautiful glassware that is reminiscent of the 1920's jazz era, where conversation was about art and the ambiance was enthusiastic & new. All the products are characterized by an elegant and original vintage style, and are embellished with pleated facets that develop precious light effects, enhancing the colors of any libation.



America '20s  
Gin Tonic  
**49202Q945**  
(25 1/4 oz)  
H 8 3/4" M 4 1/8"  
T 3 1/2" B 3 3/8"



America '20s  
Cognac  
**49202Q954**  
(21 3/4 oz)  
H 6 5/8" M 4"  
T 4 1/8" B 2 7/8"



America '20s  
Cocktail Glass  
**49202Q943**  
(8 1/2 oz)  
H 8" M 3"  
T 3" B 3"



America '20s  
Cordial  
**49202Q953**  
(2 3/4 oz)  
H 5 7/8" M 2 1/4"  
T 2 1/4" B 2 1/4"



America '20s  
Martini  
**49202Q944**  
(8 1/2 oz)  
H 7 1/4" M 4 1/4"  
T 4 1/4" B 3"



America '20s  
Martini  
**49202Q951**  
(4 1/2 oz)  
H 6 1/4" M 3 5/8"  
T 3 5/8" B 2 3/4"



America '20s  
Sling Cocktail **NEW**  
**49202Q960**  
(17 1/4 oz)  
H 9 1/2" M 3 1/4"  
T 3 1/4" B 3"



America '20s  
Sling Cocktail **NEW**  
**49202Q959**  
(13 1/2 oz)  
H 8 7/8" M 3"  
T 3" B 2 3/4"



America '20s  
Sling Cocktail **NEW**  
**49202Q958**  
(9 1/2 oz)  
H 8 1/8" M 2 5/8"  
T 2 5/8" B 2 1/2"



America '20s  
Fizz  
**49202Q957**  
(9 1/4 oz)  
H 5 3/8" M 4 1/4"  
T 4 1/4" B 3 1/8"



America '20s  
Cocktail Coupe  
**49202Q942**  
(7 3/4 oz)  
H 6 1/4" M 3 3/4"  
T 3 3/4" B 3"



America '20s  
Nick & Nora  
**49202Q952**  
(4 3/4 oz)  
H 6 1/8" M 3"  
T 3" B 2 3/4"



America '20s  
Cooler  
**49202Q946**  
(16 1/2 oz)  
H 6 1/4" M 3"  
T 3" B 2 1/2"



America '20s  
Long Drink  
**49202Q950**  
(13 1/2 oz)  
H 6 1/4" M 2 5/8"  
T 2 5/8" B 2 1/4"



America '20s  
DOF  
**49202Q947**  
(12 3/4 oz)  
H 3 5/8" M 3 3/8"  
T 3 3/8" B 3"



America '20s  
Rocks  
**49202Q949**  
(10 oz)  
H 3 1/4" M 3 1/4"  
T 3 1/4" B 2 3/4"



America '20s  
Shot  
**49202Q955**  
(2 3/4 oz)  
H 3 1/8" M 1 3/4"  
T 1 3/4" B 1 1/2"



America '20s  
Mixing Glass  
**49202Q956**  
(26 3/4 oz)  
H 6 1/4" M 4 1/4"  
T 4 1/4" B 4 1/4"

*sapphire blue*

America '20s  
Cooler  
**49212Q946**  
(16 1/2 oz)  
H 6 1/4" M 3"  
T 3" B 2 1/2"



America '20s  
Long Drink  
**49212Q950**  
(13 1/2 oz)  
H 6 1/4" M 2 5/8"  
T 2 5/8" B 2 1/4"



America '20s  
DOF  
**49212Q947**  
(12 3/4 oz)  
H 3 5/8" M 3 3/8"  
T 3 3/8" B 3"



America '20s  
Rocks  
**49212Q949**  
(10 oz)  
H 3 1/4" M 3 1/4"  
T 3 1/4" B 2 3/4"



America '20s  
Cooler  
**49213Q946**  
(16 1/2 oz)  
H 6 1/4" M 3"  
T 3" B 2 1/2"



America '20s  
Long Drink  
**49213Q950**  
(13 1/2 oz)  
H 6 1/4" M 2 5/8"  
T 2 5/8" B 2 1/4"



America '20s  
DOF  
**49213Q947**  
(12 3/4 oz)  
H 3 5/8" M 3 3/8"  
T 3 3/8" B 3"



America '20s  
Rocks  
**49213Q949**  
(10 oz)  
H 3 1/4" M 3 1/4"  
T 3 1/4" B 2 3/4"

*lilac rose***NEW** *bartender**modern and timeless glassware*

When cocktails are art, the glasses and goblets in which they are served must enhance their peculiarities. A modern take on a timeless beverage, Bartender features a collection of stemmed beer glasses that will elevate any bar service.



Stemmed Beer  
**4908Q103**  
(17 1/4 oz)  
H 9 1/2" M 3 1/4"  
T 3 1/4" B 3"



Stemmed Beer  
**4908Q102**  
(13 3/4 oz)  
H 8 7/8" M 3"  
T 3" B 2 3/4"



Stemmed Beer  
**4908Q101**  
(9 1/2 oz)  
H 8 1/8" M 2 5/8"  
T 2 5/8" B 2 1/2"







### *timeless style & elegance*

Bormioli Rocco's Florian Collection provides the perfect presentation of cocktails and mixed drinks. Lucent lines on each glass adds delicacy and romance and offers an added dimension to beverage service. Pairing well with the America 20s line, this collection of stemware and tumblers is ideal for an elegantly presented cocktail.



Florian  
Red Wine  
**49206Q110**  
(18 1/8 oz)  
H 8 3/4" M 3 5/8" T  
3 1/8" B 3 1/8"



Florian  
White Wine  
**49206Q111**  
(8 1/4 oz)  
H 8 1/4" M 3 1/8" T  
2 3/4" B 2 7/8"



Florian  
Champagne Coupe  
**49206Q112**  
(8 1/8 oz)  
H 6 1/2" M 3 3/4"  
T 3 3/4" B 3 1/8"



Florian  
Prosecco  
**49206Q113**  
(7 1/8 oz)  
H 8 5/8" M 2 1/2"  
T 2 3/8" B 2 1/2"



Florian  
Cocktail  
**49206Q114**  
(8 1/4 oz)  
H 7 3/4" M 2 3/4"  
T 2 3/4" B 2 3/4"



Florian  
Beverage Tumbler  
**49206Q101**  
(14 1/2 oz)  
H 5 1/2" M 3"  
T 3" B 2 1/4"



Florian  
DOF  
**49206Q102**  
(12 5/8 oz)  
H 4 1/2" M 3 1/8"  
T 3 1/8" B 2 1/4"



Florian  
Rocks  
**49206Q103**  
(10 1/8 oz)  
H 4 1/8" M 2 7/8"  
T 2 7/8" B 2 1/4"

### *florian lucent blue* NON-STOCK



Florian Lucent Blue  
Red Wine  
**49206Q210\***  
(18 1/8 oz)  
H 8 3/4" M 3 5/8"  
T 3 1/8" B 3 1/8"



Florian Lucent Blue  
White Wine  
**49206Q211\***  
(8 1/4 oz)  
H 8 1/4" M 3 1/8"  
T 2 3/4" B 2 7/8"



Florian Lucent Blue  
Champagne Coupe  
**49206Q212\***  
(8 1/8 oz)  
H 6 1/2" M 3 3/4"  
T 3 3/4" B 3 1/8"



Florian Lucent Blue  
Prosecco  
**49206Q213\***  
(7 1/8 oz)  
H 8 5/8" M 2 1/2"  
T 2 3/8" B 2 1/2"



Florian Lucent Blue  
Cocktail  
**49206Q214\***  
(8 1/4 oz)  
H 7 3/4" M 2 3/4"  
T 2 3/4" B 2 3/4"



Florian Lucent Blue  
Beverage Tumbler  
**49206Q201\***  
(14 1/2 oz)  
H 5 1/2" M 3"  
T 3" B 2 1/4"



Florian Lucent Blue  
DOF  
**49206Q202\***  
(12 5/8 oz)  
H 4 1/2" M 3 1/8"  
T 3 1/8" B 2 1/4"



Florian Lucent Blue  
Rocks  
**49206Q203\***  
(10 1/8 oz)  
H 4 1/8" M 2 7/8"  
T 2 7/8" B 2 1/4"

**high functionality and contemporary design**

Add a fun, contemporary twist to your dining experience with Oxford Bar glassware. Whether filled with cocktails, long drinks, juices, or shots, the faceted pattern illuminates the glass and enhances each drinks' presentation. The inclusion of a perfectly stackable design & tempered glass makes Oxford Bar a smart choice for intensive professional use.



Oxford Bar Cooler **NEW**  
**4952Q8005**  
(17 oz)  
H 6 1/8" M 3 1/2"  
T 3 1/2" B 2 1/2"



Oxford Bar Beverage  
**4952Q8001**  
(13 1/4 oz)  
H 5 3/4" M 3 1/4"  
T 3 1/4" B 2 1/4"



Oxford Bar DOF  
**4952Q8002**  
(12 5/8 oz)  
H 4" M 3 1/2"  
T 3 1/2" B 2 5/8"



Oxford Bar Rocks  
**4952Q8003**  
(10 1/2 oz)  
H 4" M 3 1/4"  
T 3 1/4" B 2 1/2"



Oxford Bar Shot  
**4952Q8004**  
(1 1/4 oz)  
H 2 1/2" M 1 3/4"  
T 1 3/4" B 1 1/4"

**NEW** BORMIOLI ROCCO *barshine*

Barshine DOF  
**4909Q102**  
(13 1/2 oz)  
H 4" M 3 5/8"  
T 3 5/8" B 2 1/4"



Barshine Tumbler  
**4909Q106**  
(13 oz)  
H 4 3/4" M 3 1/4"  
T 3 1/4" B 1 7/8"



Barshine Rocks  
**4909Q103**  
(10 1/2 oz)  
H 3 3/4" M 3 1/4"  
T 3 1/4" B 2"



Barshine Tumbler  
**4909Q104**  
(7 oz)  
H 3 1/4" M 3"  
T 3" B 2"





### *eternal elegance*

Timeless is a modern collection with unmistakable style, chosen by the biggest alcohol producers for use in their advertising, and you will also find it on the set of many major motion pictures and especially in restaurants all over the world. Each cocktail glass features vertical lines that flair outward to the rim, creating a vessel that's elegant & inviting.



Timeless  
Wine Goblet  
**677RCR384**  
(10 oz)  
H 8 1/4" M 3 1/2"  
T 3 5/8" B 3"



Timeless  
Wine Goblet  
**677RCR385**  
(7 1/2 oz)  
H 7 7/8" M 3 1/4"  
T 3 1/4" B 2 3/4"



Timeless  
Champagne Flute  
**677RCR386**  
(7 oz)  
H 9 3/8" M 2 7/8"  
T 2 3/4" B 2 5/8"



Timeless  
Highball  
**677RCR387**  
(14 3/4 oz)  
H 6" M 3"  
T 3" B 2 5/8"



Timeless  
DOF  
**677RCR388**  
(12 oz)  
H 3 5/8" M 3 3/8"  
T 3 3/8" B 3 1/8"



Timeless  
Old Fashion  
**677RCR389**  
(10 1/2 oz)  
H 3 3/8" M 3 3/8"  
T 3 3/8" B 3 1/8"



Timeless  
Shot  
**677RCR390**  
(2 1/2 oz)  
H 2 3/8" M 2 1/8"  
T 2" B 1 7/8"

## stacked to perfection

Combining ingredients and serving cocktails & spirits in these stackable glasses is a joy. Satisfy your Mixology creativity with Combo, a glassware collection featuring vertical pleats that are sure to accentuate any cocktail presentation.



Combo  
Mixing Glass  
**664RCR318**  
(21 3/4 oz)  
H 6 3/8" M 3 7/8"  
T 3 7/8" B 3 5/8"



Combo  
Stacking DOF  
**664RCR319**  
(12 1/2 oz)  
H 3 3/4" M 3 5/8"  
T 3 5/8" B 3 1/4"



Combo  
Decanter &  
DOF Gift Set  
**664RCR317**  
H 6 3/8" M 3 5/8"  
T 2 1/4" B 3 1/4"



Combo  
Decanter w/o Stopper  
**664RCR320**  
(11 1/2 oz)  
H 5" M 3 1/2" T 2 1/8" B 3 1/4"  
Stopper **664RCR3201**



## RCR *stack*



## space-saving solution

Stack represents the concept of sustainable space at its best, thanks to its space-efficient design. The tumblers, with their special anti-stuck design, are equipped with an innovative antiscald drainage system on the bottom for optimal washing in the dishwasher and can maintain cocktail temperature up to 3 times better than regular glass tumblers.



Stack Highball  
**675RCR375**  
(13 oz)  
H 5 1/2" M 3 3/8"  
T 3 1/4" B 2 3/8"



Stack DOF  
**675RCR376**  
(10 3/4 oz)  
H 3 3/4" M 3 1/2"  
T 3 1/2" B 2 1/2"



Stack  
Click Clack Dish  
**NEW**  
**689RCR453**  
(4 oz)  
L 3" W 2 3/4" H 1 1/2"



Stack  
Click Clack Dish  
**NEW**  
**689RCR454**  
(12 oz)  
L 3 1/2" W 3 1/4" H 2"





### *the perfect imperfection*

The Etna collection is inspired by the power of the eruption of the Sicilian volcano. The perfect imperfection of nature is engraved on the glasses and goblets, while light is reflected on the carvings and is multiplied on different levels enhancing the exceptional transparency of the Eco-Crystal.



Etna  
Large Goblet  
**667RCR327**  
(9 1/2 oz)  
H 7 5/8" M 3 1/2"  
T 3 1/2" B 3"



Etna  
Goblet  
**667RCR328**  
(6 3/4 oz)  
H 7 1/4" M 3 1/8"  
T 3 1/4" B 2 3/4"



Etna  
Champagne Flute  
**667RCR329**  
(6 1/2 oz)  
H 8 7/8" M 3"  
T 2 3/4" B 3"



Etna  
Highball  
**667RCR330**  
(11 1/2 oz)  
H 6" M 2 3/4"  
T 2 3/4" B 2 5/8"



Etna  
DOF  
**667RCR331**  
(11 oz)  
H 3 3/4" M 3 1/4"  
T 3 1/4" B 3 1/8"



Etna  
Whisky Decanter **NEW**  
**667RCR332**  
(27 oz)  
H 7 1/2" M 3 5/8"  
T 2 1/4" B 3 5/8"

### *opera*



### *serving cocktails with style*

Opera has been part of RCR's history for more than 30 years. Made of 100% recyclable Eco-Crystal, it has increased the notoriety of the brand with its timeless "Made in Italy" style.



Opera  
Champagne Saucer  
**672RCR364**  
(8 oz)  
H 5 1/2" M 4"  
T 3 7/8" B 3 3/4"



Opera  
Highball  
**672RCR366**  
(12 oz)  
H 6" M 2 3/4"  
T 2 3/4" B 2 1/2"



Opera  
Old Fashion  
**672RCR367**  
(10 oz)  
H 3 3/4" M 3 1/4"  
T 3 1/8" B 3"



Opera  
Neat  
**672RCR368**  
(7 oz)  
H 3 3/8" M 3"  
T 2 7/8" B 2 7/8"



### *evoking body art aesthetics*

Tattoo is a youthful collection with a contemporary style that evokes body art aesthetics. Presenting perfectly unique cocktails, Tattoo includes feature items like an hourglass tumbler that is ideal as a shot glass or jigger, and a Mule mug that goes well with any beverage.



Tattoo  
Wine Goblet  
**676RCR377**  
(9 3/4 oz)  
H 7 5/8" M 3 1/2"  
T 3 1/2" B 3"



Tattoo  
Champagne Saucer  
**676RCR378**  
(9 oz)  
H 5 1/2" M 4"  
T 3 7/8" B 2 3/4"



Tattoo  
Highball  
**676RCR379**  
(12 1/4 oz)  
H 6" M 2 3/4"  
T 2 3/4" B 2 1/2"



Tattoo  
DOF  
**676RCR380**  
(11 1/4 oz)  
H 3 3/4" M 3 1/4"  
T 3 1/4" B 3"



Tattoo  
Moscow Mule  
**676RCR381**  
(14 oz)  
H 4 1/4" L 4 3/4"  
T 3 5/8" B 2 1/2"



Tattoo  
Dual Jigger  
**676RCR382**  
(2 & 1 oz)  
H 4" M 2"



Tattoo  
Decanter  
**676RCR383**  
(1 qt)  
H 12 1/2" M 5"  
T 2" B 3 1/4"





Funky Highball  
**673RCR371**



Soul Highball  
**674RCR373**

*sturdy, resistant to breakage*

Half of the glass is decorated, while the other half is smooth, a feature that makes these glasses pleasant to touch and easy to grip. The design of Funky & Soul are combined with the transparency of Eco-Crystal, which enhances their contents, making them even more beautiful. Particularly sturdy and resistant, they are perfect for hospitality use.



Funky Highball  
**673RCR371**  
(11 3/4 oz)  
H 6 1/8" M 2 7/8"  
T 2 7/8" B 2 5/8"



Funky Old Fashion  
**673RCR372**  
(10 3/4 oz)  
H 3 3/4" M 3 3/8"  
T 3 3/8" B 3 1/4"



Soul Highball  
**674RCR373**  
(11 3/4 oz)  
H 6 1/8" M 2 7/8"  
T 2 7/8" B 2 5/8"



Soul Old Fashion  
**674RCR374**  
(10 3/4 oz)  
H 3 3/4" M 3 3/8"  
T 3 3/8" B 3 1/4"

*melodia*



*eternal, comforting & versatile line*

Melodia is the favorite glassware of millions of customers and is a major player in the world of Mixology where has established itself as an icon. Its flourish design adds grace and elegance to cocktail service.



Melodia Highball  
**670RCR352**  
(12 oz)  
H 6" M 2 3/4"  
T 2 3/4" B 2 1/2"



Melodia DOF  
**670RCR353**  
(11 1/2 oz)  
H 3 3/4" M 3 1/4"  
T 3 1/8" B 3"



Melodia Old Fashion  
**670RCR354**  
(8 oz)  
H 3 3/8" M 3"  
T 2 7/8" B 2 3/4"



Melodia Liqueur  
**670RCR355**  
(2 1/2 oz)  
H 2 3/8" M 2"  
T 2" B 2"



Melodia Carafe w/o Cork  
**670RCR356**  
(13 1/2 oz)  
H 10 5/8" M 3 5/8"  
T 3 5/8" B 3 1/2"



### *an alchemy of design & lightness*

The success of the Alkemist range lies in combining the complexity of the design with the typical lightweight of a tasting glass, creating an alchemy that makes this line unique and inimitable. Developed specifically for hotels and restaurants, the Alkemist collection includes goblets and glasses that resemble the cuts of a diamond and reflect brilliantly when hit by the light.



Alkemist  
Goblet  
**660RCR300**  
(22 1/2 oz)  
H 9 3/8" M 4 1/8"  
T 3 1/8" B 3 1/4"



Alkemist  
Gin & Tonic  
**660RCR301**  
(19 1/4 oz)  
H 8 1/8" M 4 1/4"  
T 3 1/2" B 3 1/8"



Alkemist  
Cocktail/Aperitif Goblet  
**660RCR302**  
(17 3/4 oz)  
H 8 7/8" M 4"  
T 2 3/4" B 3 1/8"



Alkemist  
XL DOF  
**660RCR304**  
(12 3/4 oz)  
H 4 1/8" M 3 1/2"  
T 3 1/8" B 2 1/2"



Alkemist  
DOF  
**660RCR305**  
(11 1/2 oz)  
H 4" M 3 1/2"  
T 3" B 2 1/2"



Alkemist  
Brandy Chalice  
**660RCR303**  
(17 3/4 oz)  
H 5 1/8" M 4"  
T 2 7/8" B 3 1/4"



Alkemist  
Bottle & Stopper  
**660RCR306**  
(1 qt)  
H 9 3/4" M 4 3/8"  
T 2" B 3 1/8"





### *radiant star design*

Cheers to better looking cocktails served in Oasis by RCR. The Oasis radiant star design spreads brightness and provides any professional bartender with the right glass for the job.



Oasis  
Nick & Nora  
**671RCR357**  
(7 3/4 oz)  
H 7 1/2" M 3"  
T 3" B 2 3/4"



Oasis  
Highball  
**671RCR358**  
(12 oz)  
H 6" M 2 3/4"  
T 2 3/4" B 2 1/2"



Oasis  
Old Fashion  
**671RCR359**  
(10 1/2 oz)  
H 3 3/4" M 3 1/4"  
T 3 1/4" B 3 1/8"

### *marilyn*



### *tumblers that shine*

Marilyn Monroe once sang, "Diamonds are a girl's best friend," and this collection, features a design that creates a cascade of light, shining on the tables of consumers.



Marilyn  
Highball  
**669RCR345**  
(11 3/4 oz)  
H 6" M 2 3/4"  
T 2 7/8" B 2 5/8"



Marilyn  
DOF  
**669RCR346**  
(11 1/4 oz)  
H 3 3/4" M 3 1/4"  
T 3 1/4" B 3 1/8"

### *brillante*



### *light reflects on the diamond details*

The design of Brillante is inspired by traditional diamond carving, creating a band of 'brilliants' around the glass that enhance the luster of the Eco-Crystal. Both elegant and timeless in its design, these RCR tumblers are a great choice for beverages served on the rocks.



Brillante  
Highball  
**663RCR315**  
(12 1/2 oz)  
H 5 7/8" M 2 3/4"  
T 2 1/2" B 2 5/8"



Brillante  
DOF  
**663RCR316**  
(11 1/4 oz)  
H 3 3/4" M 3 1/4"  
T 3 1/4" B 3 1/8"

### *great for "any" occasion*

A versatile glass for many beverages, from water to liquors. The decoration of vertical and horizontal lines enhances the beverage, making it ideal for any occasion.



### *create a custom experience*

The Any DOF Tumbler offers unique space for custom decoration.



Any DOF Tumbler  
**661RCR307** (11 1/4 oz)  
H 3 3/4" M 3 1/4" T 3 1/4" B 3 1/8"



### **NEW** *tiki*



### *serving cocktails with panache*

Inspired by Italian culture, Tiki Sardinia and Etruria embody the spirit of the ancient Italian peoples. These tumblers are ideal for cocktails, juices and for lively & festive gatherings. Both glasses are stackable for a spectacular service and for the convenience of being stored in small spaces.



Etruria Tiki Tumbler  
**687RCR450**  
(15 1/4 oz)  
H 5 3/8" M 3" T 3" B 3"



Sardinia Tiki Tumbler  
**688RCR451**  
(15 1/4 oz)  
H 5 3/8" M 3" T 3" B 2 7/8"





*ultra clear, eco-crystal*

Designed for the finest table settings, Aria is the top range from the RCR Collection. These thin glasses are impressively shock resistant thanks to the high-density of Eco-Crystal. The design of the glass angles inward from its widest point, indicating the right level of wine to be poured, while the wide cone-shaped bowl of the glass allows you to appreciate the gradations of color at its very best.



Aria  
Red Wine  
**662RCR308**  
(26 1/4 oz)  
H 9 3/4" M 4 1/2"  
T 3" B 3 1/4"



Aria  
Red Wine  
**662RCR309**  
(24 oz)  
H 9 1/8" M 4 1/2"  
T 3 1/4" B 3 3/8"



Aria  
White Wine  
**662RCR310**  
(15 1/2 oz)  
H 8 3/4" M 3 5/8"  
T 2 5/8" B 3 1/4"



Aria  
White  
**662RCR311**  
(13 oz)  
H 8 1/8" M 3 3/8"  
T 2 1/2" B 3"



Aria  
Champagne Saucer  
**662RCR312**  
(11 1/4 oz)  
H 6 3/4" M 4 1/2"  
T 3 7/8" B 3 1/4"

*essential*



*refined design for the modern tabletop*

Essential glassware by RCR is designed for modern and minimalist table décor. The flat bowl holds the wine in a simply elegant trapezoid shape, and the slight reopening of the rim enhances the release of aromas, facilitating the sliding of the liquid during tasting and gives the glass a soft, elegant silhouette.



Essential  
Wine  
**666RCR322**  
(23 oz)  
H 9 1/4" M 3 3/4"  
T 3" B 3"



Essential  
Wine  
**666RCR323**  
(19 1/4 oz)  
H 9" M 3 1/2"  
T 2 3/4" B 3"



Essential  
Wine  
**666RCR324**  
(14 1/2 oz)  
H 8 1/2" M 3 3/8"  
T 2 5/8" B 3"



Essential  
Champagne Flute  
**666RCR325**  
(10 1/2 oz)  
H 9 1/4" M 3"  
T 2" B 3"



Essential  
DOF  
**666RCR326**  
(14 3/4 oz)  
H 3 7/8" M 3 3/8"  
T 2 7/8" B 3 1/4"

## *universal wine*

Universum is suitable for any type of red, white or sparkling wine. It is ideal for those looking for a multi-functional and accessible table setting, its carefully crafted design makes it especially strong and sturdy for frequent use. The goblet's curvature indicates the ideal amount to pour for tasting and thanks to its versatility, it is also often used to serve aperitifs.



Universum  
Wine  
**678RCR392**  
(18 1/4 oz)  
H 8 3/4" M 3 7/8"  
T 2 5/8" B 3 1/4"



Universum  
Tumbler  
**678RCR393**  
(14 1/4 oz)  
H 3 7/8" M 3 1/2"  
T 2 5/8" B 2 1/4"



## *simply elegant*

This line has been conceived to meet all the demands of wine lovers. Goblets, glasses and decanters feature a classic design, which is both elegant and international.



Invino  
Wine  
**668RCR332**  
(22 1/2 oz)  
H 8 5/8" M 4 1/4"  
T 3 1/2" B 3 3/8"



Invino  
Wine  
**668RCR334**  
(18 3/4 oz)  
H 9 1/4" M 3 5/8"  
T 2 3/4" B 3 1/4"



Invino  
Wine  
**668RCR338**  
(13 oz)  
H 8 3/4" M 3 1/8"  
T 2 3/8" B 3"



Invino  
Champagne Flute  
**668RCR339**  
(9 oz)  
H 9 3/8" M 2 1/4"  
T 2" B 3"



Invino  
Champagne Flute  
**668RCR340**  
(6 oz)  
H 7 3/4" M 2 1/2"



Invino  
Sherry  
**668RCR341**  
(3 1/2 oz)  
H 6 7/8" M 2 1/2"



Invino  
Grappa  
**668RCR342**  
(2 3/4 oz)  
H 6 3/4" M 2 1/4"





*brilliant italian design*

Luxury & beauty wrapped up in one, Touch by RCR is an elegant tumbler that features vertical diamond cuts. Ideal for high end cocktails or liquors served neat, Touch will take your beverage service to the next level.



Touch  
DOF  
**680RCR396\***  
(9 3/4 oz)  
H 3 3/4" M 3 1/4"  
T 3 1/4" B 3 1/8"

*leonardo*



*luxury & grace*

Created by the best Italian designers who give an unmistakable sense of Italian art in the world, the Leonardo tumbler signifies luxury & grace. Following the most rigorous quality controls, the diamond cuts of Leonardo enhance the characteristics of the glass and accenuate the brilliance & transparency.



Leonardo  
Highball **NEW**  
**680RCR394**  
(12 1/4 oz)  
H 6" M 2 3/4"  
T 2 3/4" B 2 1/2"



Leonardo  
DOF  
**679RCR395\***  
(9 3/4 oz)  
H 3 3/4" M 3 1/4"  
T 3 3/8" B 3 1/4"

***convenient water service***

Ideal for everyday equipment, the Eco bottle allows you to create your mise-en-place in style avoiding uncomfortable jugs and polluting plastic bottles. Much lighter than normal bottles, thanks to the specific characteristics of the Ecological Crystal, it maintains the temperature of drinks much longer than normal glass.



Eco  
Water Bottle  
**665RCR321\***  
(1 qt)  
H 10 3/4" M 3 1/2"  
T 1 3/4" B 3 1/2"

MODERN MIXOLOGIST ***bar tools***

Citrus Peeler **NEW**  
**5800M413** L 6 1/8"



\*Denotes items that are Hand Made

H=Height M=Max Diameter T=Top Diameter B=Bottom Diameter • All products are measured at max capacity (oz). For further details contact your customer service rep.





**Class:** Premium  
**Thickness:** 4.4 mm  
**Patterns Available:** 6005SX 18/10 SS 6005FS\* Full Satin 6005HS\* Half Satin

## *palm 18/10*

- Elegant design
- Emphasized with long flutes, distributing light and shade
- Distinctive on the table and comfortable to hold

<b>6005SX001</b>	US Teaspoon 6 1/2"
<b>6005SX002</b>	Oval Bowl Soup/ Dessert Spoon 7 5/8"
<b>6005SX042</b>	Dinner Knife 9 1/2"
<b>6005SX021</b>	Dinner Fork 8"
<b>6005SX023</b>	Dessert/Salad Fork 7 1/2"

<b>6005SX003*</b>	Oval Bowl Spoon 7 5/8"
<b>6005SX075</b>	Round Bowl Soup Spoon 7"
<b>6005SX005</b>	A.D. Coffee Spoon 4"
<b>6005SX007*</b>	European Teaspoon 5 1/2"
<b>6005SX056</b>	Steak Knife 9 3/4"
<b>6005SX051</b>	Dessert Knife 8 3/8"
<b>6005SX045</b>	Butter Knife 5 7/8"

### **Serving Utensils**

<b>6005SX061</b>	Serving Spoon 10"
<b>6005SX072*</b>	Serving Fork 9 3/4"





## *eperney 18/10*

- Stylish design
- Modern architectural feel with a twist
- High quality mirror polish

**5755SX001** Teaspoon 6 1/4"  
**5755SX003** Oval Bowl Soup/Dessert Spoon 7 7/8"  
**5755SX042** Dinner Knife 9 1/4"  
**5755SX021** Dinner Fork 8 1/8"  
**5755SX023** Dessert/Salad Fork 6 7/8"

**5755SX002** Bouillon Soup Spoon 7 1/8"  
**5755SX006** Iced Tea Spoon 7 7/8"  
**5755SX005** A.D. Coffee Spoon 4 3/8"  
**5755SX056** Steak Knife 9 1/4"  
**5755SX051** Dessert Knife 7 7/8"  
**5755SX045** Butter Knife 7"  
**5755SX025** Cocktail Fork 5 3/4"

### **Serving Utensils**

**5755SX061** Serving Spoon 9"





*visually stunning, lightweight & durable*

Handcrafted from marine-grade birch wood, Maritime by De La Roca is a collection of cleverly designed serving pieces that help create visually stunning presentations for a variety of occasions & dishes. Aptly named because of its wood characters, this material is made specifically for use on boats which endures exposure to water without drying out or cracking. Thus, resulting in a product that is immensely durable and dishwasher safe. From appetizers and main courses to desserts and cheeseboards, Maritime boards are protected with a food grade varnish and will effortlessly elevate any creation.





Oval Tray  
**6525DL002**  
L 18 7/8" W 7 7/8"



Round Plate  
**6525DL003**  
D 12 1/2"



Sushi Tray  
**6525DL012**  
L 15 3/4" W 2 3/4"



Sushi Tray  
**6525DL013**  
L 10 5/8" W 2 3/4"



Freestyle Platter  
**6525DL007**  
L 16" W 10 1/2"



Freestyle Platter  
**6525DL008**  
L 14 1/2" W 9"



Freestyle Plate  
**6525DL004**  
L 10 5/8" W 12"



Freestyle Plate  
**6525DL005**  
L 8 1/2" W 10"



Freestyle Plate  
**6525DL006**  
L 6 1/2" W 8"



Serving Board Paddle  
**6525DL009**  
L 22 7/8" W 5 1/8"



Rectangle Serving Board  
**6525DL011**  
L 14 1/8" W 13 3/8"





*beautifully designed, quality made*

With a tiered cake stand and three accompanied trays, wine chillers and jugs, the Drift collection offers a range of elegant presentation pieces for your tabletop or buffet. Designed to be both aesthetically unique and highly functional, all Drift items are made from 18/10 stainless steel.



Wine/Champagne Bucket Stand  
**5977RW003**  
D 11" H 25 1/4"



Wine/Champagne Cooler Large  
**5977RW020**  
L 10 5/8" W 16 1/8" H 16 1/8"



Double Wine/Champagne Bucket  
**5977RW002** L 11" W 8 1/2" H 9"  
Single Wine/Champagne Bucket  
**5977RW001** L 9 1/4" W 7 1/2" H 8 3/8"



Double Walled  
Wine/Champagne Cooler  
**5977RW013**  
L 5 3/8" W 5 1/4" H 9"



Jug w/Ice Guard  
**5977RW017**  
L 8 7/8" W 6 5/8" H 5 1/2" (2 1/4 qt)  
Jug w/o Ice Guard **NEW**  
**5977RW118**  
L 5 1/8" W 5 7/8" H 10 3/8" (2 qt)



Coffee Server  
**5977RW107**  
(2 1/4 qt)



Jug  
**5977RW016** (10 oz)  
**5977RW015** (5 oz)



Teapot **NEW**  
**5977RW010**  
D 6 1/8" W 8 1/4" H 5 1/4" (30 oz)  
**5977RW009** (15 1/4 OZ)



Sugar Pot With Lid **NEW**  
**5977RW012** (10 1/4 oz)  
**5977RW011**  
L 2 1/2" W 3" H 3 1/4" (5 1/8 oz)



Cake Stand  
**5977RW014**  
L 9 7/8" W 9 5/8" H 16 5/8"  
Replacement Serving Tray **NEW**  
**5977RW005** L 14 1/4" W 12 3/4" H 1 5/8"  
**5977RW018** L 8" W 7 1/8" H 1"  
**5977RW019** L 10" W 9" H 1 1/8"



Two Tier Canapé Stand  
**5977RW106**  
L 5" W 5" H 8 1/2"  
Replacement Serving Tray **NEW**  
**5977RW018** L 8" W 7 1/8" H 1"  
**5977RW019** L 10" W 9" H 1 1/8"



Pinch Pot Set w/ Walnut Base **NEW**  
**5977RW008**  
L 2 3/4" W 5 1/2" H 1 5/8"



Wine Coaster **NEW**  
**5977RW004**  
L 5 1/8" W 5" H 1 1/2"





*foodservice with style*

Create a statement on your tabletop with Williamsburg Metalworks serviceware. These upscale serving pieces are made of durable 18/10 stainless steel and provide an ideal solution for salty delicacies, small bites, and accoutrements.



Banquet Caviar Server  
**5850JX136** L 12 3/4" W 3 1/4"  
**5850JX137** Replacement Inserts  
**5850JX138** Replacement Ring  
**5850JX139** Replacement Center Bowl



Individual Caviar Server  
**5850JX133** L 7 3/4" W 2 5/8"  
**5850JX134** Replacement Ring  
**5850JX135** Replacement Center Bowl



Caviar Server **NEW**  
**5850JX140**  
D 11" H 4 3/8" (3 qt)  
(Fits 4934Q276)



Coupe Bowl w/ Base **NEW**  
**5850JX150**  
D 9 1/4" H 3 1/4" (11/4 qt)



Stand  
**5850JX132**  
L 3 1/4" W 11/4"  
H 7 1/2"



Ice Cream Cup **NEW**  
**5850JX149**  
D 4" H 6"  
(8 3/4 oz)



Cup  
**5850JX131**  
L 4 3/4" W 2 1/2" H 5"  
(18 1/2 oz)



Toast Rack  
**5850JX142**  
L 4 1/2" W 2 3/4" H 6"



*vintage stainless steel*

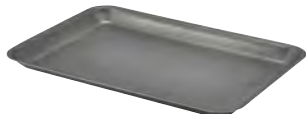


*casual service with personality*

Perfect for the casual dining atmosphere, Genware Vintage is a collection of stainless steel accessories that serve as a great alternative to porcelain. Ideal for individual or sharing dishes, sides and sauces, these vessels will add an industrial look to your food presentation.



Coupe Plate  
**GWSCP26V** D 10 1/4"  
**GWSCP24V** D 9 3/4"  
**GWSCP20V** D 8"  
**GWSCP16V** D 6"



Tray  
**GWSST3726V** L 14 3/4" W 10 1/2" H 3/4"  
**GWSST3121V** L 12 1/2" W 8 5/8" H 3/4"  
**GWSST2014V** L 8" W 5 3/4" H 3/4"



Pie Dish  
**GWSPD16V**  
L 6 1/4" W 4 3/4"  
H 1 1/2"



Jug  
**GWSJG5V**  
(5 oz)



Serving Cup  
**GWVC8V**  
D 3 3/8" H 3 3/8"  
(12 3/4 oz)



Hammered Serving Cup  
**GWSVH8V**  
D 3 3/8" H 3 3/8"  
(12 3/4 oz)



Ramekin  
**GWRAMST2V**  
D 2 3/8" H 1 3/4"  
(2 1/2 oz)



Oval Dish  
**GWSSD24V** L 11 3/8" W 7" H 2" (1 1/4 qt)  
**GWSSD21V** L 10" W 6 1/4" H 2" (26 1/2 oz)  
**GWSSD18V** L 8 7/8" W 5 3/8" H 1 1/4" (17 oz)  
**GWSSD16V** L 8" W 4 3/4" H 1" (12 oz)



Round Dish **NEW**  
**GWSRD14V** D 5 1/2" H 1 1/2" (16 oz)  
**GWSRD16V** D 6 1/4" H 1 1/2" (23 oz)  
**GWSRD18V** D 7 1/2" H 2" (1 qt)



Fry Pan  
**GWSMF18V** L 11 3/4" W 7 1/4" H 3 1/4" (32 3/4 oz)  
**GWSMF15V** L 10 7/8" W 6 1/4" H 3 1/4" (21 3/4 oz)  
**GWSMF13V** L 10 1/8" W 5 1/2" H 2 3/4" (15 oz)



Sauce Pan  
**GWSMS9V** L 7 1/8" W 3 1/2" H 3 5/8" (11 3/4 oz)  
**GWSMS8V** L 6 1/2" W 3 1/8" H 3 3/8" (6 1/2 oz)  
**GWSMS7V** L 6 1/4" W 2 7/8" H 3 1/4" (4 3/4 oz)



*vintage black*



Coupe Plate  
**GWSCP24BKV** D 9 3/4"  
**GWSCP20BKV** D 8"



Tray  
**GWSST3121BKV** L 12 1/2" W 8 5/8" H 3/4"  
**GWSST2014BKV** L 8" W 5 3/4" H 3/4"



Hammered Serving Cup  
**GWSVH8BKV**  
D 3 3/8" H 3 3/8"  
(12 3/4 oz)



Serving Cup  
**GWSVC8BKV**  
D 3 3/8" H 3 3/8"  
(12 3/4 oz)



Jug **NEW**  
**GWSJG5BKV**  
D 2 1/4" H 2 3/4"  
(5 oz)



Ramekin  
**GWRAMST2BKV**  
D 2 3/8" H 1 3/4"  
(2 1/2 oz)

*vintage copper* **NEW**



Hammered Serving Cup  
**GWSVH8CV**  
D 3 3/8" H 3 3/8"  
(12 3/4 oz)



Serving Cup  
**GWSVC8CV**  
D 3 3/8" H 3 3/8"  
(12 3/4 oz)



Jug  
**GWSJG5CV**  
D 2 1/4" H 2 3/4"  
(5 oz)



Ramekin  
**GWRAMST2CV**  
D 2 3/8" H 1 3/4"  
(2 1/2 oz)



Hammered Serving Cup  
**GWSVH8GDV**  
D 3 3/8" H 3 3/8"  
(12 3/4 oz)



Serving Cup  
**GWSVC8GDV**  
D 3 3/8" H 3 3/8"  
(12 3/4 oz)



Jug  
**GWSJG5GDV**  
D 2 1/4" H 2 3/4"  
(5 oz)



Ramekin  
**GWRAMST2GDV**  
D 2 3/8" H 1 3/4"  
(2 1/2 oz)





## *silo*



Clear Mid-Size  
**43517C**  
D 2 3/4" H 5"  
Liquid Candle:  
HD12-144, HD12-72



Clear Ice Mid-Size  
**43517CI** ♦  
D 2 3/4" H 5"  
Liquid Candle:  
D12-144, HD12-72



Gold Ice Mid-Size  
**43517GI** ♦  
D 2 3/4" H 5"  
Liquid Candle:  
HD12-144, HD12-72



Satin Gold Mid-Size  
**43517SG** ♦  
D 2 3/4" H 5"  
Liquid Candle:  
HD12-144, HD12-72



Satin Linen Mid-Size  
**43517SL** ♦  
D 2 3/4" H 5"  
Liquid Candle:  
HD12-144, HD12-72



Ruby Luster Mid-Size  
**43517R**  
D 2 3/4" H 5"  
Liquid Candle:  
HD12-144, HD12-72



Satin Midnight Mid-Size  
**43517SM** ♦  
D 2 3/4" H 5"  
Liquid Candle:  
HD12-144, HD12-72



Black Ice Mid-Size  
**43517BI** ♦  
D 2 3/4" H 5"  
Liquid Candle:  
HD12-144, HD12-72



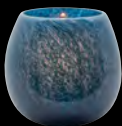
Liquid Votive Candle 12 Hour  
**HD12-144** Case: 144  
**HD12-72** Case: 72  
D 2" H 1 1/4"



*art glass votives*



Art Glass Emerald  
Votive ♦  
**4187**  
D 4" H 3 1/2"  
Liquid Candle:  
HD12-144, HD12-72



Art Glass Marine  
Votive ♦  
**4188**  
D 4" H 3 1/2"  
Liquid Candle:  
HD12-144, HD12-72



Art Glass Sepia  
Votive ♦  
**4185**  
D 4" H 3 1/2"  
Liquid Candle:  
HD12-144, HD12-72



Art Glass Spice  
Votive ♦  
**4186**  
D 4" H 3 1/2"  
Liquid Candle:  
HD12-144, HD12-72



Laredo Blue & Gray  
Votive ♦  
**4180**  
D 4" H 3 1/2"  
Liquid Candle:  
HD12-144, HD12-72



Hope Red & Amber  
Votive ♦  
**4181**  
D 4" H 3 1/2"  
Liquid Candle:  
HD12-144, HD12-72



Liquid Votive Candle 12 Hour  
**HD12-144** Case: 144  
**HD12-72** Case: 72  
D 2" H 1 1/4"





### introducing the d.w. haber ice cell

The perfect solution for keeping your buffet food fresh and chilled for extended periods! This innovative chilling system is designed to keep food cold for at least 3 hours, ensuring freshness and quality. Keeping food at the right temperature is crucial to prevent bacterial growth and maintain its taste and texture. The D.W. Haber Ice Cell is specifically designed to fit the standard and low profile Fusion Gastronorm risers, available in 3 finishes: Ash Grey, Grey Wash, and Natural Teak wood.



1. Store the cooling blocks in the freezer overnight for the best results.



2. Place the cooling blocks in the BPA free tray, and set the temperature equalizers on top of the blocks to maintain even cold distribution.



3. Add the porcelain Gastronorm platter and enjoy chilled food for at least 3 hours.



#### DWFB20ICESET

Set Includes 1 Tray, 2 Cooling Blocks and 2 Buffer Pouches  
Gastronorm Platters Sold Separately

**DWFBGN1** Gastronorm White Rectangle Platter 1/1

**DWFBGN12** Gastronorm White Rectangle Platter 1/2

**DWFBGCBP** Buffer Pouch L 10 7/8" W 9 1/2" H 1/4

**DWFBGCGN12ICE** Cooling Block L 10 1/2" W 9 1/8" H 9 7/8"

**DWFBGCTRAY** Tray Plastic L 20 1/2" W 12 5/8" H 1 3/4

Gastronorm Buffet Riser  
L 23" W 15" H 7 1/4"

**DWFB20127WDT** Natural Teak

**DWFB20127WDAG** Ash Grey Teak

**DWFB20127WDGW** Grey Wash Teak



Low Profile Gastronorm Riser  
L 21 1/2" W 13 1/2" H 2"

**DWFB21132WDT** Natural Teak

**DWFB21132WDAG** Ash Grey Teak

**DWFB21132WDGW** Grey Wash Teak



*cordless warming induction for use anywhere*

The D.W. Haber Power Cell is a revolutionary solution for keeping food hot for extended periods of time. The sleek and elegant design makes it a stylish addition to buffets & food stations, and its cordless battery operation allows it to be used anywhere. The Power Cell has a 6-hour recharge time so it can be used for multiple meals per day, and it is a cost-saving solution as it compares to repetitive purchases of chafing fuel. The first of its kind, this induction unit is energy-efficient and operates quietly, ensuring that it won't disturb the ambiance of the setting.

d.w.haber  
**POWERCELL**



Power Cell Cordless Induction Range - Patent-Pending  
**DWELINPC** L 15" W 13" H 3"  
Travel Case  
**DWELINPCASE** L 19" W 15 7/8" H 7 1/8"



Power Cell Cover Up  
Ash Grey Teak  
**DWFB15133WDAG**  
L 16 7/8" W 15" H 3 3/4"



Power Cell Cover Up  
Natural Teak  
**DWFB15133WDT**  
L 16 7/8" W 15" H 3 3/4"



Power Cell Cover Up  
Grey Wash Teak  
**DWFB15133WDGW**  
L 16 7/8" W 15" H 3 3/4"





### *elevate your buffet display*

The D.W. Haber Fusion Bakery Boxes are a unique solution for any buffet presentation. Accessorize your display with durable teak wood, easy to clean acrylic drawers, and fixed stainless-steel handles that are convenient for opening. With the ability to be stacked for service or storage, these display drawers are perfect for serving bread, bagels, and so much more.





Stackable Bakery Box with  
Acrylic Drawer  
**DWFBWDBDAG**  
L 14" W 8 1/2" H 8"



Stackable Bakery Box  
with Acrylic Drawer  
**DWFBWDBDGW**  
L 14" W 8 1/2" H 8"



Stackable Bakery Box  
with Acrylic Drawer  
**DWFBWDBDT**  
L 14" W 8 1/2" H 8"





*a buffet presentation that pops*

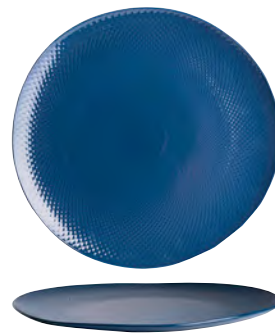
Introducing Alpha-Ceram Buffet, a collection of service items made of fortified porcelain that provide an eye-catching display through dimension & visual appeal. With subtle embossments and a full indigo glaze, these serving vessels are shaped with accentuated curves and bring an added softness to the display. Made of a lightweight, yet durable material, service is easy and clean up is quick & efficient.



**6959E6135**  
Platter Rectangle  
L 18 1/2" W 10 1/2" H 1 1/4"



**6959E6134**  
Platter Rectangle  
L 14 1/2" W 9 1/2" H 1"



**6959E6136**  
Platter Round  
D 14"



**6959E6132**  
Serving Bowl  
D 15" H 4" (5 qt)



**6959E6131**  
Serving Bowl  
D 13" H 4" (3 3/4 qt)



**6959E6130**  
Serving Bowl  
D 10" H 4" (2 1/2 qt)



**6959E6133**  
Crock  
D 6" H 7" (2 qt)



**6959E6137**  
Crock  
D 5" H 5 1/2" (1 qt)

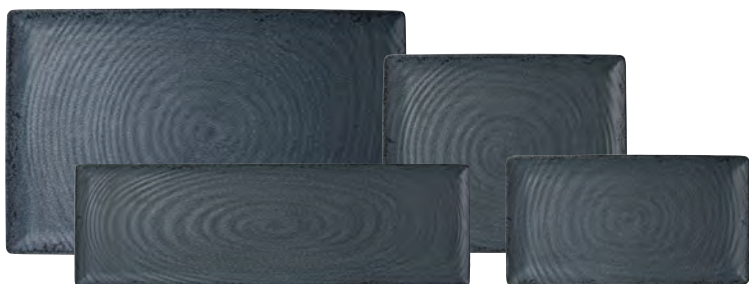




***light weight, high durability***

Creations Pompeii Buffet generates an astonishing and memorable display. Designed for both hot and cold, this melamine collection provides high-quality design with versatility among foodservice presentations. Available in slate and stone colors, Pompeii Buffet is dishwasher safe and its break resistant structure eliminates the need to sacrifice visual quality for durability.

*slate*



Gastronorm Rectangle

**7184TM049** L 20 7/8" W 12 7/8" H 1"  
**7184TM048** L 20 7/8" W 6 1/2" H 1"

**7184TM047** L 12 3/4" W 10 5/8" H 1"  
**7184TM046** L 12 3/4" W 6 7/8" H 1"



Large Round Shallow Bowl

**7184TM043**  
D 14 1/8" H 2 5/8" (1 gal)

Medium Round Shallow Bowl

**7184TM041**  
D 11 3/4" H 2 5/8" (2 5/8 qt)



Large Round Bowl

**7184TM045** D 16 1/4" H 6 7/8" (3 3/8 gal)  
**7184TM044** D 14" H 5 7/8" (2 gal)



Medium Round Bowl

**7184TM042**  
D 11 1/4" H 4 5/8" (1 gal)



Small Round Bowl

**7184TM040**  
D 9 5/8" H 3 3/4" (2 3/8 qt)

*stone*



Gastronorm Rectangle

**7194TM049** L 20 7/8" W 12 7/8" H 1"  
**7194TM048** L 20 7/8" W 6 1/2" H 1"

**7194TM047** L 12 3/4" W 10 5/8" H 1"  
**7194TM046** L 12 3/4" W 6 7/8" H 1"



Large Round Shallow Bowl

**7194TM043**  
D 14 1/8" H 2 5/8" (1 gal)

Medium Round Shallow Bowl

**7194TM041**  
D 11 3/4" H 2 5/8" (2 5/8 qt)



Large Round Bowl

**7194TM045** D 16 1/4" H 6 7/8" (3 3/8 gal)  
**7194TM044** D 14" H 5 7/8" (2 gal)



Medium Round Bowl

**7194TM042**  
D 11 1/4" H 4 5/8" (1 gal)



Small Round Bowl

**7194TM040**  
D 9 5/8" H 3 3/4" (2 3/8 qt)





*Now available with a heavy-duty bumper for those applications where elegance meets the need for additional protection.*



Service Cart w/Leather Handle  
And Heavy Duty Bumper  
**MGCRNX11BBXX**  
L 42 1/2" W 24" H 36 1/2"



Top Border Cart w/Leather Handle  
And Heavy Duty Bumper  
**MGCRNX08GBXX**  
L 42 1/2" W 24" H 36 1/2"  
(shown w/optional  
Jungle-Green quick covers)



Mixology Cart w/Leather Handle  
And Heavy Duty Bumper  
**MGCRNX13WSXX**  
L 42 1/2" W 24" H 36 1/2"  
(shown w/optional  
Golden-brown quick covers)



Cheese Plate & Wine Cart w/Leather Handle  
And Heavy Duty Bumper  
**MGCRNX14MSXX**  
L 42 1/2" W 24" H 36 1/2"  
(shown w/optional  
Silver-grey quick covers)

TOP



Nero Marquina  
Marble BHP



Grey  
Slate



Bengali Mango  
Wood BHP



High Density  
Bamboo

SEGMENT



Brushed  
Stainless Steel



Brushed  
Brass



*Our foremost durable cart comes with a stainless handle and heavy-duty bumper, designed to operate under intense use in harsh environments.*



Service Cart w/Stainless Steel Handle And Heavy Duty Bumper\*  
**MGCNRX12GSXX**  
L 42 1/2" W 24" H 36 1/2"



Top Border Cart w/Stainless Steel Handle And Heavy Duty Bumper  
**MGCNRX18MSXX**  
L 42 1/2" W 24" H 36 1/2"  
(shown w/optional Jungle-Green quick covers)



Mixology Cart w/Stainless Steel Handle And Heavy Duty Bumper  
**MGCNRX19BSXX**  
L 42 1/2" W 24" H 36 1/2"  
(shown w/optional Silver-grey quick covers)



Cheese Plate & Wine Cart w/Stainless Steel Handle And Heavy Duty Bumper  
**MGCNRX20WSXX**  
L 42 1/2" W 24" H 36 1/2"

TOP

- M Nero Marquina Marble BHP
- G Grey Slate
- W Bengali Mango Wood BHP
- B High Density Bamboo

SEGMENT

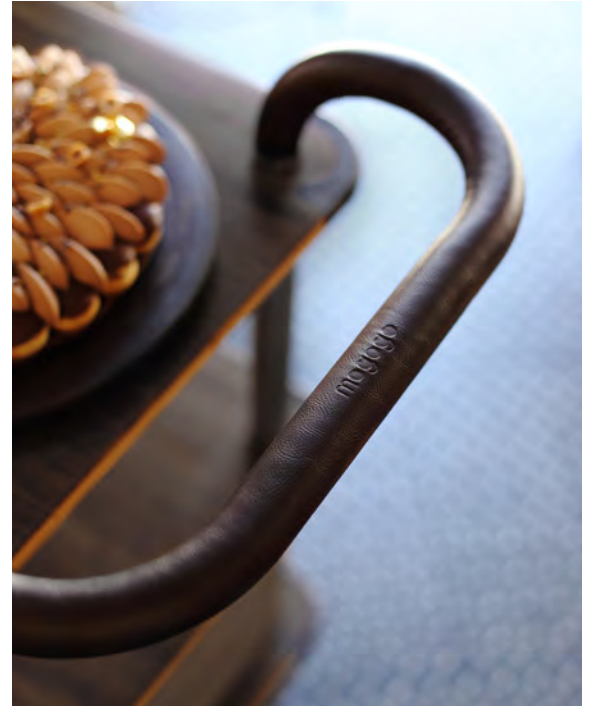
- S Brushed Stainless Steel
- B Brushed Brass

\*Brass Finish is not available with stainless steel handle models





**TOP BORDER CART MGCRNX02MSXX**  
(shown with optional Charcoal-Black quick cover)



Service Cart  
**MGCRNX01MSXX**  
L 41 1/2" W 21" H 36 1/2"



Top Border Cart  
**MGCRNX02BSXX**  
L 41 1/2" W 21" H 36 1/2"



Cheese Plate And Wine Cart  
**MGCRNX04WBXX**  
L 41 1/2" W 21" H 40 1/2"



Mixology Cart  
**MGCRNX03GSXX**  
L 41 1/2" W 21" H 40 1/2"

**TOP**

- M** Nero Marquina Marble BHP
- G** Grey Slate
- W** Bengali Mango Wood BHP
- B** High Density Bamboo

**SEGMENT**

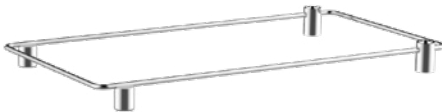
- S** Brushed Stainless Steel
- B** Brushed Brass



**CHEESE PLATE AND WINE CART MGCERNX04MSXX**  
(shown with optional Charcoal-Black quick cover)



## SERVICE CART ADD-ONS



**Border**  
L 31 1/2" W 17" H 2" Fits Service Cart  
**MGSSCMS0401** Brushed Stainless Steel  
**MGSSCMBR0101** Brushed Brass



**Wine Glass Holder**  
L 21" W 4" H 2" Holds up to 6 wine glasses  
**MGSSCMS0501**  
Brushed Stainless Steel



**Leather Towel Hanger**  
**MGSSCMSL0101**  
Brushed Stainless Steel  
**MGSSCMSL0201** Brushed Brass



**Cutting Board**  
**MGSSCMBM0201**  
L 19" W 8" H 0.7"  
Fits Border



**Cheese Tray**  
**MGSSCMBM0501**  
L 19" W 12" H 7"  
Fits Border



**Ice Bucket**  
**MGSSCMS0601**  
D 6" H 6" Fits Border  
Brushed Stainless Steel

## ROLL'N EXTENSIONS



Roll'n Mini Buffet Extension **NEW**

- MGSAADHB0301**  
Marble Black L 14" W 25 1/2"
- MGSAADHG0301**  
Grey Slate L 14" W 25 1/2"
- MGSAADHW0301**  
Mango Wood L 14" W 25 1/2"





**steelite.com**

**Steelite International America**

154 Keystone Drive  
New Castle, Pennsylvania 16105

**toll free:** 800-367-3493

**telephone:** 724-856-4900

**fax:** 724-856-7925

**email:** usa@steelite.com

**Steelite International Canada**

Unit 2, 26 Riviera Drive  
Markham, Ontario L3R 5M1

**toll free:** 800-465-4284

**telephone:** 905-752-1074

**fax:** 905-752-1120

**email:** canada@steelite.com

**LCNP523**



**Showrooms available by appointment:**

Atlanta • Chicago • Hong Kong • London, UK • Los Angeles • Madrid • New York  
Stoke-on-Trent, UK • Toronto, ON • Washington, D.C. • Youngstown, OH