

RCP DESIGN



CUSTOM MADE IN BROOKLYN NYC

2020



RCP DESIGN, INC.

RCP Design, Inc. has been privileged over the years to work with some of the most creative and loyal clientele in the hospitality industry. This catalog is a small testimonial to our vision and to continue the commitment passed on to us by the founder of the company, Giacomo Abbate. It's a tribute to a man who had the determination to change the food service industry and was admired by his colleagues, family and co-workers.

Many companies claim success from work done overseas but we can stand true to our convictions and personal choice to say "Made in America". As a Woman Owned Minority Company (WMBE) who is a certified manufacturer in Brooklyn, New York, we look forward to working with some of the world's finest hotels, chefs and restaurants creating, designing and manufacturing new innovative products but also being able to provide old style classics that are timeless for many years to come!

Cover :

2-3567 Mixology Cart

Size: 39" L x 24" W x 34" H Overall w/ Handles 42" L

Pearl Oak Veneer With Blackened Steel Frame & Hardware, Black Stone Top, Insulated Removable Ice Bin Drawer, Pullout Shelf, (4) Small Condiment Insert Cups, Removable Liquor Bottle Rail With Drawer For Utensils.



Strawberry Tree
Model: 2-5502
Size: 13" H x 5" D Base

CUSTOM CARTS + BARS	1
TESTIMONIALS	9
BANQUET	17
CUSTOM TABLETOP + BARTOP	23
ABOUT US	29

CUSTOM CARTS





Ice Cream Cart
Model: 7-1100
Size: 42" L X 20" W X 33" H
Overall 46" L

CARTS



Tea Cart
Model: 8-1717
Size: 43" L x 23" W x 34" H

CUSTOM MADE CARTS



Slim Jim Cart w/ Solid Brass Corners
Model: 7-3577
Size: 42" L x 24" W x 42" H



Copper Plated Carving Trolley - Satin Finish
Model: 4-0014
Size: 38" L X 24" W x 45 1/2", H Overall: 52" L X 28" W



All Purpose Service Cart
Model: 2-3589
Size: 38" L x 20" W x 34" H



Guerridon
Model: 2-2600
Size: 36" L x 16" W x 31", H Overall: 52" L



Brass Gueridon w/ Designer White Shelves
 Model: 7 -6222
 Size: 36" L x 18" W x 32 1/2 " H
 H Overall: 33" L x 18" W x 26" L Frame



Gueridon w/ Copper Corner Guards
 Model: 4-2601
 Size: 36" L x 16" W x 31" H
 Overall: 52" L



Bar Cart
 Model: 2-1818
 Mercedes-Benz Stadium Atlanta, Ga.
 Size: 40" L x 24" W x 34" H



Bar Cart
 Model: 2-2134
 Post Ranch Inn Sierra Mar Restaurant
 Size: 36" L x 20" W x 34" H

THRILL CART



Mixologist Greg Best at the Steelite International Booth
National Restaurant Association Show in Chicago

Thrill Cart - Model: 2-3593
Size: 39 1/2" L x 20" W x 38" H



Drop-In model Thrill Machine available.



Recommended with CO₂ 20lb Tank (not included)

BAR CARTS



Bourbon Cart
Model: 4-2680
Size: 38" L x 22" W x 34" H

Available with Stainless Steel, Brass or Copper plated accents. Bourbon Barrel not included.
Pull out with white composition recessed cutting board.



Front View



Stainless Steel Custom Speed Rail



Mixology Cart
 Model: 8-2688
 Size: 3 1/2" L x 16 1/2" W x 36" H



Mixology Cart
 Model: 2-3587
 Size: 40" L x 22" W x 34" H



Champagne Cart
 Model: 2-3588
 Size: 38" L x 20" W x 34" H



Mimosa Cart
 Model: 8-6121
 Size: 38" L x 20" W x 34" H



Martini Cart
 Model: 8-6101
 Size: 38" L x 20" W x 34" H

TESTIMONIALS





THE GRILL



Silver Plated Duck Press Cart
Model: 7-6204
Size: 18" L x 18" W x 34" H

“My company, Major Food Group and RCP have been working side by side for years, bringing back a grand style of table side service to New York City. Their ability to understand and meet our needs is second to none in the United States. Their unmatched attention to detail, coming from decades of experience, allow them to stand head and shoulders apart from everyone else. It is a pleasure and a privilege to work with Connie, Chris and the team at RCP.”

- CHEF MARIO CARBONE



Carving Trolley, Model: 7-6206, Size: 38" L x 24" W x 45" H



Flambe Cart, Model: 7-6207, Size: 35" L x 20" W x 34" H



All Purpose Trolley
Model: 7-6210
Size: 38" L x 22" W x 35" H



Custom Bronze Multi-Tiered Display
Size: 36" Tall Rings: 15" & 18"



Liquor Cart w/ Floating Glass
Model: 7-6215
Size: 28" L x 39" W x 43 1/2" H



Stackable Brass Coasters
Model: 7-1801
Size: 4" D

Brass Coaster Holder
Model: 7-1802
Size: 5" D w/ 2 1/2" posts



Silver Plated Engraved Wine Cooler
Model: 3-4009
Size: 8" D

ELEVEN MADISON PARK



Champagne Cart

Model: 2-7001

Size: 30 1/2" L x 18 1/2" W x 33 1/2" H

“We have worked with RCP Design for a number of years and they have become an invaluable partner when it comes to creating unique, stunning, and functional pieces for our dining room. Whether it’s a series of custom carts or various service pieces, their ability to take our vision and make it a reality, is incredible. There is a genuine passion in every bit of work they do and they really make an effort to understand our needs as a business.

I’m excited to see what we can build together next.”

- WILL GUIDARA



Coffee Cart

Model: 2-7002

Size: 28 1/2" L x 18 1/2" W x 32" H



Ice Shaving Cart

Model: 2-7003

Size: 30" L x 20" W x 32" H



Waldorf Salad Cart

Model: 2-7004

Size: 28 1/2" L x 18 1/2" W x 32" H



Manhattan Cart

Model: 2-7005

Size: 30" L x 20" W x 32" H

STEELITE INTERNATIONAL



Bar Cart
Model: 2-7700W
Size: 40" L x 22" W x 34" H

“Create an experience your guests will remember with RCP Design’s custom hospitality carts. Made in the USA, each cart is specifically designed to satisfy your needs and constructed of high quality materials that are built to last. Perfect for wine service, tableside guacamole, desserts and more, these carts are sure to elevate your food service presentation. Steelite International is pleased to partner with RCP Design and proudly represent these eye-catching carts in our showrooms – Chicago, Los Angeles, New York, Washington D.C., and Youngstown, Ohio. Schedule an appointment today to check them out!”

- JOHN MILES



Service Cart

Model: 2-6552

Size: 38" L x 20" W x 32" H



Multi-Purpose Solid Hickory Guerridon

Model: 2-2601

Size: 38" L x 20" W x 34" H



Thrill Cart

Model: 2-3593

Size: 39 1/2" L x 20" W x 38" H



Mixology Cart

Model: 2-3567

Size: 39" L x 24" W x 34" H

BANQUET





Portable Dim Sum Table
Model: 2-8000
Size: 84" L x 28" W x 36" H

HOT STATIONS



- A. 2-3047 **Oval Casserole** 10" x 6 3/4" x 1 3/4" H
- B. 4-3057 **Oval Casserole** 7 1/4" x 5" x 2 1/2" H
- C. 2-3053 **Oval Casserole** 5" x 3 1/2" x 1 3/4" H
- D. 2-3054 **Oval Casserole** 6 1/2" x 4 1/2" x 1 1/2" H

Stove Cover Up
 Model: 2-2626
 Size: 15 1/2" L x 11 1/2" W x 5 3/4" H
 Overall Length 18"



- A. 2-3030 **Round Pan** 7 1/4" x 1 1/2" x 2" Deep
 - B. 2-1705 **Round Saucepan w/ Cover** 4 3/8" x 1 3/4" Deep
 - D. 2-1703 **Round Saucepan w/ Brass Handle** 3 5/8" x 2" Deep
 - E. 2-1706 **Round Saucepan** 3 5/8" x 1 3/4" Deep
 - F. 4-1722 **Round Saucepan Copper Plate** 2 1/2" x 1 1/2" Deep
 - G. 2-1722 **Round Saucepan w/ Brass Handle** 2 1/2" x 1 1/2" Deep
- *Many Sizes Available in Stainless Steel, Copper Plate, Silver Plate.

- A. 4-1200H **6 Hole Escargot Pan Copper Plate**
- B. 2-1245 **Sherbet Cup** 3 1/2" D x 2 3/4" H
- C. 2-1718 **Round Saucepan** 3 1/2" x 1 1/2" Deep
- D. 4-1704 **Round Saucepan** 4 1/4" x 1 3/4" Deep

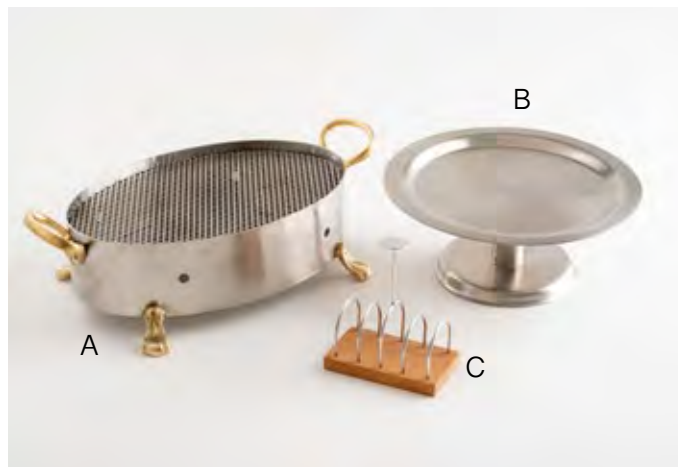


A. 2-3065 **Medium Oval Casserole** 12 1/4" x 7 1/4" x 1 1/2"

B. 2-3066 **Large Oval Casserole** 16 1/2" x 10" x 1 5/8"

C. 2-3064 **Small Oval Casserole** 10 1/2" x 6 1/2" x 1 1/2"

* All sizes available in custom colored powder coated (with minimum order).



A. 2-1400 **Oval Rechaud** 11 1/2" x 7 1/2" x 4" H Overall 15"

B. 2-1390 **Compote** 10" x 4" H

C. 2-1395 **Toast Rack** 4 1/4" x 2 1/2" H Overall H 5"

19th STREET HOLLOWARE



18 oz. Coffee/Tea Pot
Model: 2-2002



5 oz. Sugar Bowl
Model: 2-2001



5 oz. Creamer
Model: 2-2000



64 oz. Water Pitcher
Model: 2-2012



64 oz. Coffee Pot
Model: 2-2005



32 oz. Coffee/Tea Pot
Model: 2-2003

PUNCH BOWLS, WINE COOLERS & STANDS



Black Powder Coated Wine Cooler
Model: 2-4058B
Size: 8" D



Black Powder Coated Punch Bowl
Model: 2-1916-14B
Size 14" D



Black Powder Coated Wine Cooler
Model: 2-4057B
Size: 8" D



Insulated Tapered Oval Cooler w/ Stand
 Model: 2-2014
 Size: Cooler 22 1/2" L x 17 1/2" W x 8 1/2" H
 Size: Stand 21 3/8" L x 15 5/8" W x 7 3/4" H



Large Square Wine Cooler
 Model: 2-4043
 Size: 12" L x 12" W x 11 1/4" H
Large Square Stand
 Model: 2-4044, Size: 22 1/2" H
 Overall H: 31 1/2"



Three Bottle Wine Station
 Model: 2-4004
 Size: 13" L x 6" W x 7 3/4" H
Oval Stand
 Model: 2-4005
 Size: 20 1/2" H



Banquet Punch Bowl
 Model: 2-1916-16
 Size: 16" D



Black Powder Coated Square Juice Container
 Model: 2-9975B
 Size: 8" L x 8" W x 14" H, Overall H 20"



Square Wine Cooler
 Model: 2-4040, Size: 8" L x 8" W x 9" H
Square Stand
 Model: 2-4041, Size: 27" H

DISPLAY STANDS



Single Compote Stand Silver Plate

Model: 3-3231

Size: 4 3/4" x 5 1/2" H

Two Tier Compote Stand Silver Plate

Model: 3-3231-2

Size: Top Tier: 4 3/4", Bottom Tier: 5 3/4",
Overall H 9"



Two Tier Compote Stand

Model: 2-1515G

Size: Top Tier: 6 3/4", Bottom Tier: 8",
Overall: 12" H



Tomahawk Steak Carving Board Display

Model: 8-1056

Size: Overall: 21 1/2" L x 12" W x 24" H

Base: 18" L x 12" W 2 3/4" H

Board: 18" L x 12" W

Rack: 17" L x 20 1/2" H



Three Tier Stand

Model 2-3200

Size: 11 3/4" x 22" H

3 Wood Trays: 10" D



Three Tier Tower w/ Ring Handle

Model 2-9977W - White Powder Coated

Size: Overall H: 19" w/out Handle 14"

Two Tier Coupe Bowl Stand

Model: 2-9975W - White Powder Coated

Overall H: 12"



Three Tier Coupe Tower Powder Coated
 Model: 2-3202
 Size: Overall 15 1/2" H
 Top Tier: 7 3/4" D, Middle Tier: 9 1/2" D, Bottom Tier: 11 1/2" D



Three Tier Tower
 Model: 2-9998
 Size: Top Tier: 7 7/8" D x 2 1/2" D, Middle Tier: 9 1/2" D x 2 1/4" D,
 Bottom Tier: 11 1/2" D x 2 3/4" D



Three Tier Plate Holder
 Model: 2-1574
 Holds 9" – 12" Plates
 Size: 22" H



Three Tier Etagere
 Model: 2-1577
 Holds 6" – 8" Plates
 Size: 20" H



Three Tier Wood & Glass Stand
 Model: 8-1307
 Holds 6", 8", 10" Plates
 Size: 18 1/2" H

CUSTOM TABLETOP





Ramekin
Model: 2-1100
Small Rectangular Tray S/S
Model: 2-2161

TABLE TOP



Four Compartment Jam Holder

Model: 2-3221

Size: 1 3/4" D, Holders 7" H

*All sizes available in custom colored powder coated (with minimum order).

Powder Coated Three Compartment Nut Dish

Model: 2-1438R

Size: 4 1/2" H x 3 1/4" D Cups

*Also available in Stainless Steel Model: 2-1438R



Breakfast Box w/ built-in USB Charger

Model: 8-3157

Size: 17" L x 9" W x 3" H



Teak MEP Box w/ Stainless Steel Insert

Model: 8-3131

Size: 8" L x 4" W x 2" H



Walnut Flatware Rest

Model: 8-3141

Size: 4" L x 2" W x 1" H



A. 2-3241 Jam Holder w/ Flat Knob D. 2-3251 Jam Holder w/ Loop Handle
 B. 2-3231 Jam Holder w/ Tubing Handle E. 2-3261 Jam Holder w/ Acorn Finial
 C. 2-3221 Jam Holder w/ Knob Finial



Stainless Steel Serving Tongs
 Model: 2-3205, Size: 9 1/2" L
 *Available in custom colored powder coated (with minimum order).



19" Round Tray w/ Offset Flange Model: 2-2101SF
17" Round Tray w/ San Francisco Border Model: 2-1490SF
10" Oval Tray w/ San Francisco Border Model: 2-1510SF
 *Available in many sizes.



Oblong Tray Model: 2-1497PF, Size: 19" x 25"
Oval Tray Model: 2-1516, Size: 8"
Oval Tray Two Step Model: 2-1513PF, Size: 16"
Rectangular Tray Model: 2-2161, Size: 8" x 5 1/2"
Oval Butter Dish Model: 2-2801, *Available in many sizes.



Round Sugar Stick Holder Model: 2-3502, Size: 2" x 2"
Rectangular Sugar Pack Holder Model: 2-3500
 Size: 4" L x 2" W x 1 1/2" H



Black Powder Coated Rectangular Display Stand
 Model: 2-2163B
 Size: 10" x 5"

BAR TOP



Flight Tray Set Up

Model: 2-6060

Size: 10" L x 6 3/4" W x 5" H



Bourbon Flight Set Up

Model: 2-5050

Size: 16" L Overall x 8 1/2" W

Tray: 11 1/4" x 7 3/4" w/ 2" D Cups



Magnum Coaster Stainless Steel

Model: 2-0029

Size: 4" D x 1 1/2" H

Magnum Coaster Black Powder Coated

Model: 8-0029

Size: 4" D x 1 1/2" H



Three Glass Shot Holder

Model: 2-3333

Size: 18 1/2" x 6"

Cut-Out 1 3/4" Hole



Rectangular Passing Tray

Model: 2-2162B

Size: 13" x 10"

Black Powder Coated



Three Compartment Condiment Holder

Model: 2-9199

Size: Base 12" L x 4" W x 1" H

Cups 3 1/4" x 1 1/2" Deep

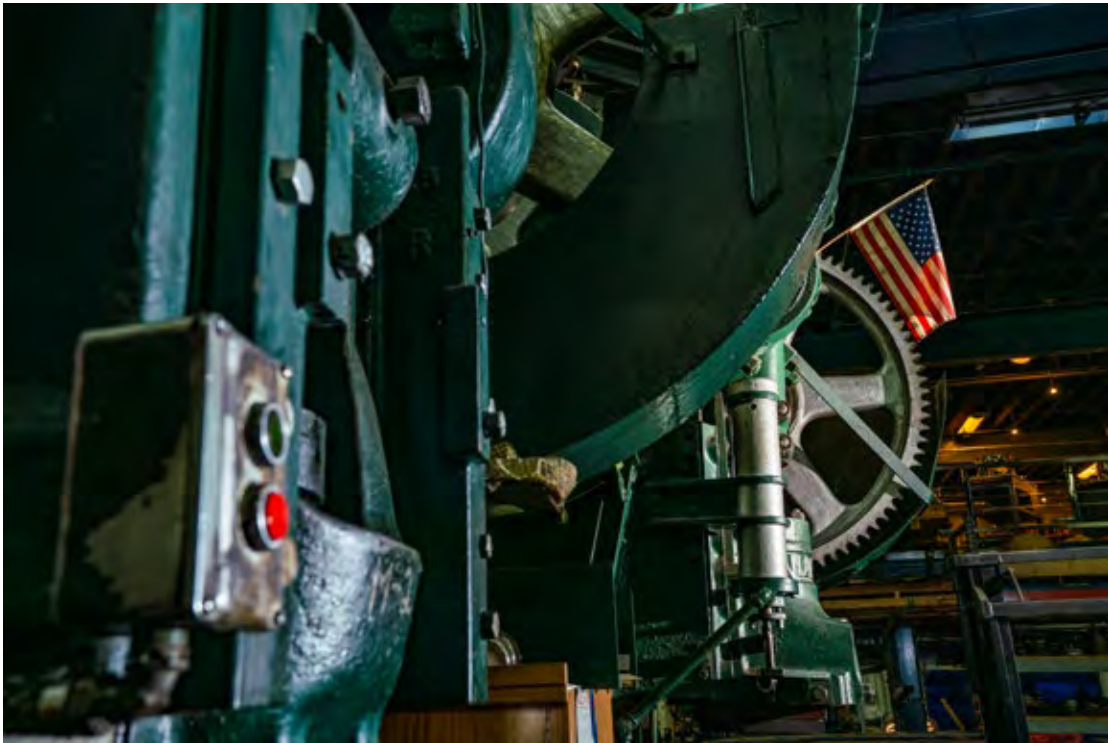
Rectangular Tray w/ Wood Under Liner

Model: 2-9187

Size: Base 10" x 6" x 3/4" Deep

Tray Size: 8 3/4" x 5" x 1 1/4" Deep

A B O U T U S



RCP Design is a Brooklyn-based woman-owned company with over 50 years of experience in the design and manufacturing of banquet and hospitality products. We have developed a very unique reputation for the highest quality and workmanship in the industry.

Our machinery gives us the advantage of running no minimum quantity on some items and the ability to provide hundreds of items in a short period of time.

We provide a complete design service from renderings, material samples and often prototypes for customers to get a vision of what they are trying to display.





Many of our clients have included:

THE NOMAD - NYC, LAS VEGAS, LA
ELEVEN MADISON PARK - NYC
THE MODERN - NYC
THE CARLYLE HOTEL- NYC
THE GRILL - NYC
THE PALMS HOTEL & CASINO - LAS VEGAS

MICHAEL MINA – BOURBON STEAK
THE LONDON HOUSE - CHICAGO
ROYAL CARRIBEAN CRUISE LINES
THE PENINSULA HOTEL - NYC
MGM RESORTS INTERNATIONAL
WOLFGANG PUCK FINE DINING





RCP DESIGN, INC.

RCP DESIGN, INC. PO BOX 310583, Brooklyn, NY 11231



Showroom and Factory

148 19th Street
Brooklyn, NY 11232

Contacts Us

Phone: 718-643-6132
Fax: 718-788-3080
Email: info@rcp-design.com
Web: www.rcp-design.com

Follow Us

Facebook: Rcp Design, Inc
Instagram: @RCP_Design_Inc
Twitter: @RCP_Design_Inc
LinkedIn: Rcp Design, Inc