

# RCP DESIGN



CUSTOM MADE IN BROOKLYN NYC  
2020



# RCP DESIGN, INC.

RCP Design, Inc. has been privileged over the years to work with some of the most creative and loyal clientele in the hospitality industry. This catalog is a small testimonial to our vision and to continue the commitment passed on to us by the founder of the company, Giacomo Abbate. It's a tribute to a man who had the determination to change the food service industry and was admired by his colleagues, family and co-workers.

Many companies claim success from work done overseas but we can stand true to our convictions and personal choice to say "Made in America". As a Woman Owned Minority Company (WMBE) who is a certified manufacturer in Brooklyn, New York, we look forward to working with some of the world's finest hotels, chefs and restaurants creating, designing and manufacturing new innovative products but also being able to provide old style classics that are timeless for many years to come!

Cover :

2-3567 Mixology Cart

Size: 39" L x 24" W x 34" H Overall w/ Handles 42" L

Pearl Oak Veneer With Blackened Steel Frame & Hardware, Black Stone Top, Insulated Removable Ice Bin Drawer, Pullout Shelf, (4) Small Condiment Insert Cups, Removable Liquor Bottle Rail With Drawer For Utensils.



**Strawberry Tree**  
Model: 2-5502  
Size: 13" H x 5" D Base

**CUSTOM CARTS + BARS 1**

**TESTIMONIALS 9**

**BANQUET 17**

**CUSTOM TABLETOP + BARTOP 23**

**ABOUT US 29**

# CUSTOM CARTS





**Ice Cream Cart**  
Model: 7-1100  
Size: 42" L X 20" W X 33" H  
Overall 46" L

# CARTS



**Tea Cart**

Model: 8-1717

Size: 43" L x 23" W x 34" H

# CUSTOM MADE CARTS



**Slim Jim Cart w/ Solid Brass Corners**  
Model: 7-3577  
Size: 42" L x 24" W x 42" H



**Copper Plated Carving Trolley - Satin Finish**  
Model: 4-0014  
Size: 38" L X 24" W x 45 1/2", H Overall: 52" L X 28" W



**All Purpose Service Cart**  
Model: 2-3589  
Size: 38" L x 20" W x 34" H



**Guerridon**  
Model: 2-2600  
Size: 36" L x 16" W x 31", H Overall: 52" L



**Brass Gueridon w/ Designer White Shelves**  
 Model: 7 -6222  
 Size: 36" L x 18" W x 32 1/2 " H  
 H Overall: 33" L x 18" W x 26" L Frame



**Gueridon w/ Copper Corner Guards**  
 Model: 4-2601  
 Size: 36" L x 16" W x 31" H  
 Overall: 52" L



**Bar Cart**  
 Model: 2-1818  
 Mercedes-Benz Stadium Atlanta, Ga.  
 Size: 40" L x 24" W x 34" H



**Bar Cart**  
 Model: 2-2134  
 Post Ranch Inn Sierra Mar Restaurant  
 Size: 36" L x 20" W x 34" H

# THRILL CART



Mixologist Greg Best at the Steelite International Booth  
National Restaurant Association Show in Chicago

**Thrill Cart** - Model: 2-3593  
Size: 39 1/2" L x 20" W x 38" H



Drop-In model Thrill Machine available.



Recommended with CO<sub>2</sub> 20lb Tank (not included)

# BAR CARTS



Available with Stainless Steel, Brass or Copper plated accents. Bourbon Barrel not included.  
Pull out with white composition recessed cutting board.



Front View



Stainless Steel Custom Speed Rail



**Mixology Cart**  
 Model: 8-2688  
 Size: 3 1/2" L x 16 1/2" W x 36" H



**Mixology Cart**  
 Model: 2-3587  
 Size: 40" L x 22" W x 34" H



**Champagne Cart**  
 Model: 2-3588  
 Size: 38" L x 20" W x 34" H



**Mimosa Cart**  
 Model: 8-6121  
 Size: 38" L x 20" W x 34" H



**Martini Cart**  
 Model: 8-6101  
 Size: 38" L x 20" W x 34" H

# TESTIMONIALS





The Grill - NYC

# THE GRILL



**Silver Plated Duck Press Cart**

Model: 7-6204

Size: 18" L x 18" W x 34" H

“My company, Major Food Group and RCP have been working side by side for years, bringing back a grand style of table side service to New York City. Their ability to understand and meet our needs is second to none in the United States. Their unmatched attention to detail, coming from decades of experience, allow them to stand head and shoulders apart from everyone else. It is a pleasure and a privilege to work with Connie, Chris and the team at RCP.”

- CHEF MARIO CARBONE



**Carving Trolley**, Model: 7-6206, Size: 38" L x 24" W x 45" H



**Flambe Cart**, Model: 7-6207, Size: 35" L x 20" W x 34" H



**All Purpose Trolley**  
Model: 7-6210  
Size: 38" L x 22" W x 35" H



**Custom Bronze Multi-Tiered Display**  
Size: 36" Tall Rings: 15" & 18"



**Liquor Cart w/ Floating Glass**  
Model: 7-6215  
Size: 28" L x 39" W x 43 1/2" H



**Stackable Brass Coasters**  
Model: 7-1801  
Size: 4" D

**Brass Coaster Holder**  
Model: 7-1802  
Size: 5" D w/ 2 1/2" posts



**Silver Plated Engraved Wine Cooler**  
Model: 3-4009  
Size: 8" D

# ELEVEN MADISON PARK



Champagne Cart

Model: 2-7001

Size: 30 1/2" L x 18 1/2" W x 33 1/2" H

“We have worked with RCP Design for a number of years and they have become an invaluable partner when it comes to creating unique, stunning, and functional pieces for our dining room. Whether it’s a series of custom carts or various service pieces, their ability to take our vision and make it a reality, is incredible. There is a genuine passion in every bit of work they do and they really make an effort to understand our needs as a business.

I’m excited to see what we can build together next.”

- WILL GUIDARA



**Coffee Cart**

Model: 2-7002

Size: 28 1/2" L x 18 1/2" W x 32" H



**Ice Shaving Cart**

Model: 2-7003

Size: 30" L x 20" W x 32" H



**Waldorf Salad Cart**

Model: 2-7004

Size: 28 1/2" L x 18 1/2" W x 32" H



**Manhattan Cart**

Model: 2-7005

Size: 30" L x 20" W x 32" H

# STEELITE INTERNATIONAL



Bar Cart  
Model: 2-7700W  
Size: 40" L x 22" W x 34" H

“Create an experience your guests will remember with RCP Design’s custom hospitality carts. Made in the USA, each cart is specifically designed to satisfy your needs and constructed of high quality materials that are built to last. Perfect for wine service, tableside guacamole, desserts and more, these carts are sure to elevate your food service presentation. Steelite International is pleased to partner with RCP Design and proudly represent these eye-catching carts in our showrooms – Chicago, Los Angeles, New York, Washington D.C., and Youngstown, Ohio. Schedule an appointment today to check them out!”

- JOHN MILES



**Service Cart**

Model: 2-6552

Size: 38" L x 20" W x 32" H



**Multi-Purpose Solid Hickory Guerridon**

Model: 2-2601

Size: 38" L x 20" W x 34" H



**Thrill Cart**

Model: 2-3593

Size: 39 1/2" L x 20" W x 38" H



**Mixology Cart**

Model: 2-3567

Size: 39" L x 24" W x 34" H

# BANQUET





Portable Dim Sum Table  
Model: 2-8000  
Size: 84" L x 28" W x 36" H

# HOT STATIONS



- A. 2-3047 **Oval Casserole** 10" x 6 3/4" x 1 3/4" H  
 B. 4-3057 **Oval Casserole** 7 1/4" x 5" x 2 1/2" H  
 C. 2-3053 **Oval Casserole** 5" x 3 1/2" x 1 3/4" H  
 D. 2-3054 **Oval Casserole** 6 1/2" x 4 1/2" x 1 1/2" H



## Stove Cover Up

Model: 2-2626

Size: 15 1/2" L x 11 1/2" W x 5 3/4" H

Overall Length 18"



- A. 2-3030 **Round Pan** 7 1/4" x 1 1/2" x 2" Deep  
 B. 2-1705 **Round Saucepan w/ Cover** 4 3/8" x 1 3/4" Deep  
 D. 2-1703 **Round Saucepan w/ Brass Handle** 3 5/8" x 2" Deep  
 E. 2-1706 **Round Saucepan** 3 5/8" x 1 3/4" Deep  
 F. 4-1722 **Round Saucepan Copper Plate** 2 1/2" x 1 1/2" Deep  
 G. 2-1722 **Round Saucepan w/ Brass Handle** 2 1/2" x 1 1/2" Deep  
 \*Many Sizes Available in Stainless Steel, Copper Plate, Silver Plate.



- A. 4-1200H **6 Hole Escargot Pan Copper Plate**  
 B. 2-1245 **Sherbet Cup** 3 1/2" D x 2 3/4" H  
 C. 2-1718 **Round Saucepan** 3 1/2" x 1 1/2" Deep  
 D. 4-1704 **Round Saucepan** 4 1/4" x 1 3/4" Deep

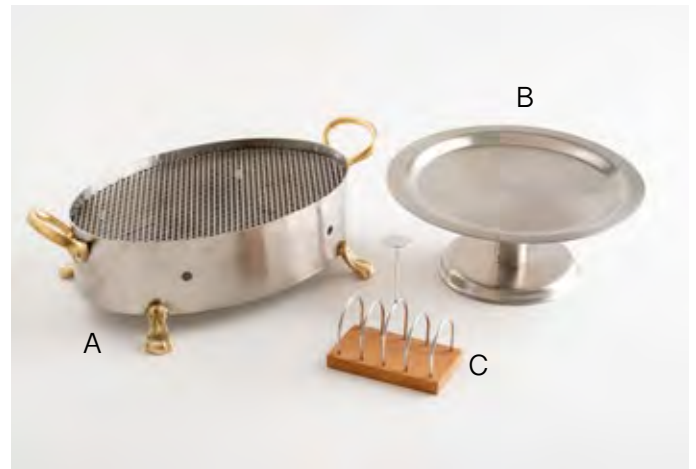


A. 2-3065 **Medium Oval Casserole** 12 1/4" x 7 1/4" x 1 1/2"

B. 2-3066 **Large Oval Casserole** 16 1/2" x 10" x 1 5/8"

C. 2-3064 **Small Oval Casserole** 10 1/2" x 6 1/2" x 1 1/2"

\* All sizes available in custom colored powder coated (with minimum order).



A. 2-1400 **Oval Rechaud** 11 1/2" x 7 1/2" x 4" H Overall 15"

B. 2-1390 **Compote** 10" x 4" H

C. 2-1395 **Toast Rack** 4 1/4" x 2 1/2" H Overall H 5"

## 19th STREET HOLLOWARE



18 oz. Coffee/Tea Pot  
Model: 2-2002



5 oz. Sugar Bowl  
Model: 2-2001



5 oz. Creamer  
Model: 2-2000



64 oz. Water Pitcher  
Model: 2-2012



64 oz. Coffee Pot  
Model: 2-2005



32 oz. Coffee/Tea Pot  
Model: 2-2003

# PUNCH BOWLS, WINE COOLERS & STANDS



**Black Powder Coated Wine Cooler**  
Model: 2-4058B  
Size: 8" D



**Black Powder Coated Punch Bowl**  
Model: 2-1916-14B  
Size 14" D



**Black Powder Coated Wine Cooler**  
Model: 2-4057B  
Size: 8" D



**Insulated Tapered Oval Cooler w/ Stand**  
Model: 2-2014  
Size: Cooler 22 1/2" L x 17 1/2" W x 8 1/2" H  
Size: Stand 21 3/8" L x 15 5/8" W x 7 3/4" H



**Large Square Wine Cooler**  
Model: 2-4043  
Size: 12" L x 12" W x 11 1/4" H  
**Large Square Stand**  
Model: 2-4044, Size: 22 1/2" H  
Overall H: 31 1/2"



**Three Bottle Wine Station**  
Model: 2-4004  
Size: 13" L x 6" W x 7 3/4" H  
**Oval Stand**  
Model: 2-4005  
Size: 20 1/2" H



**Banquet Punch Bowl**  
Model: 2-1916-16  
Size: 16" D



**Black Powder Coated Square Juice Container**  
Model: 2-9975B  
Size: 8" L x 8" W x 14" H, Overall H 20"



**Square Wine Cooler**  
Model: 2-4040, Size: 8" L x 8" W x 9" H  
**Square Stand**  
Model: 2-4041, Size: 27" H

# DISPLAY STANDS



**Single Compote Stand Silver Plate**

Model: 3-3231

Size: 4 3/4" x 5 1/2" H

**Two Tier Compote Stand Silver Plate**

Model: 3-3231-2

Size: Top Tier: 4 3/4", Bottom Tier: 5 3/4",  
Overall H 9"



**Two Tier Compote Stand**

Model: 2-1515G

Size: Top Tier: 6 3/4", Bottom Tier: 8",  
Overall: 12" H



**Tomahawk Steak Carving Board Display**

Model: 8-1056

Size: Overall: 21 1/2" L x 12" W x 24" H

Base: 18" L x 12" W 2 3/4" H

Board: 18" L x 12" W

Rack: 17" L x 20 1/2" H



**Three Tier Stand**

Model 2-3200

Size: 11 3/4" x 22" H

3 Wood Trays: 10" D



**Three Tier Tower w/ Ring Handle**

Model 2-9977W - White Powder Coated

Size: Overall H: 19" w/out Handle 14"

**Two Tier Coupe Bowl Stand**

Model: 2-9975W - White Powder Coated

Overall H: 12"



### Three Tier Coupe Tower Powder Coated

Model: 2-3202

Size: Overall 15 1/2" H

Top Tier: 7 3/4" D, Middle Tier: 9 1/2" D, Bottom Tier: 11 1/2" D



### Three Tier Tower

Model: 2-9998

Size: Top Tier: 7 7/8" D x 2 1/2" D, Middle Tier: 9 1/2" D x 2 1/4" D,

Bottom Tier: 11 1/2" D x 2 3/4" D



### Three Tier Plate Holder

Model: 2-1574

Holds 9" – 12" Plates

Size: 22" H



### Three Tier Etagere

Model: 2-1577

Holds 6" – 8" Plates

Size: 20" H



### Three Tier Wood & Glass Stand

Model: 8-1307

Holds 6", 8", 10" Plates

Size: 18 1/2" H

# CUSTOM TABLETOP





**Ramekin**  
Model: 2-1100  
**Small Rectangular Tray S/S**  
Model: 2-2161

# TABLE TOP



**Four Compartment Jam Holder**

Model: 2-3221

Size: 1 3/4" D, Holders 7" H

\*All sizes available in custom colored powder coated (with minimum order).



**Powder Coated Three Compartment Nut Dish**

Model: 2-1438R

Size: 4 1/2" H x 3 1/4" D Cups

\*Also available in Stainless Steel Model: 2-1438R



**Breakfast Box w/ built-in USB Charger**

Model: 8-3157

Size: 17" L x 9" W x 3" H



**Teak MEP Box w/ Stainless Steel Insert**

Model: 8-3131

Size: 8" L x 4" W x 2" H



**Walnut Flatware Rest**

Model: 8-3141

Size: 4" L x 2" W x 1" H



A. 2-3241 Jam Holder w/ Flat Knob      D. 2-3251 Jam Holder w/ Loop Handle  
B. 2-3231 Jam Holder w/ Tubing Handle      E. 2-3261 Jam Holder w/ Acorn Finial  
C. 2-3221 Jam Holder w/ Knob Finial



**Stainless Steel Serving Tongs**

Model: 2-3205, Size: 9 1/2" L

\*Available in custom colored powder coated (with minimum order).



**19" Round Tray w/ Offset Flange** Model: 2-2101SF  
**17" Round Tray w/ San Francisco Border** Model: 2-1490SF  
**10" Oval Tray w/ San Francisco Border** Model: 2-1510SF  
\*Available in many sizes.



**Oblong Tray** Model: 2-1497PF, Size: 19" x 25"  
**Oval Tray** Model: 2-1516, Size: 8"  
**Oval Tray Two Step** Model: 2-1513PF, Size: 16"  
**Rectangular Tray** Model: 2-2161, Size: 8" x 5 1/2"  
**Oval Butter Dish** Model: 2-2801, \*Available in many sizes.



**Round Sugar Stick Holder** Model: 2-3502, Size: 2" x 2"  
**Rectangular Sugar Pack Holder** Model: 2-3500  
Size: 4" L x 2" W x 1 1/2" H



**Black Powder Coated Rectangular Display Stand**  
Model: 2-2163B  
Size: 10" x 5"

# B A R T O P



## Flight Tray Set Up

Model: 2-6060

Size: 10" L x 6 3/4" W x 5" H



## Bourbon Flight Set Up

Model: 2-5050

Size: 16" L Overall x 8 1/2" W

Tray: 11 1/4" x 7 3/4" w/ 2" D Cups



## Magnum Coaster Stainless Steel

Model: 2-0029

Size: 4" D x 1 1/2" H

## Magnum Coaster Black Powder Coated

Model: 8-0029

Size: 4" D x 1 1/2" H



### Three Glass Shot Holder

Model: 2-3333

Size: 18 1/2" x 6"

Cut-Out 1 3/4" Hole



### Rectangular Passing Tray

Model: 2-2162B

Size: 13" x 10"

Black Powder Coated



### Three Compartment Condiment Holder

Model: 2-9199

Size: Base 12" L x 4" W x 1" H

Cups 3 1/4" x 1 1/2" Deep

### Rectangular Tray w/ Wood Under Liner

Model: 2-9187

Size: Base 10" x 6" x 3/4" Deep

Tray Size: 8 3/4" x 5" x 1 1/4" Deep

# A B O U T   U S



RCP Design is a Brooklyn-based woman-owned company with over 50 years of experience in the design and manufacturing of banquet and hospitality products. We have developed a very unique reputation for the highest quality and workmanship in the industry.

Our machinery gives us the advantage of running no minimum quantity on some items and the ability to provide hundreds of items in a short period of time.

We provide a complete design service from renderings, material samples and often prototypes for customers to get a vision of what they are trying to display.





Many of our clients have included:

THE NOMAD - NYC, LAS VEGAS, LA  
 ELEVEN MADISON PARK - NYC  
 THE MODERN - NYC  
 THE CARLYLE HOTEL- NYC  
 THE GRILL - NYC  
 THE PALMS HOTEL & CASINO - LAS VEGAS

MICHAEL MINA – BOURBON STEAK  
 THE LONDON HOUSE - CHICAGO  
 ROYAL CARRIBEAN CRUISE LINES  
 THE PENINSULA HOTEL - NYC  
 MGM RESORTS INTERNATIONAL  
 WOLFGANG PUCK FINE DINING





# RCP DESIGN, INC.

RCP DESIGN, INC. PO BOX 310583, Brooklyn, NY 11231



**Showroom and Factory**  
148 19th Street  
Brooklyn, NY 11232

**Contacts Us**  
Phone: 718-643-6132  
Fax: 718-788-3080  
Email: [info@rcp-design.com](mailto:info@rcp-design.com)  
Web: [www.rcp-design.com](http://www.rcp-design.com)

**Follow Us**  
Facebook: [Rcp Design, Inc](https://www.facebook.com/RcpDesignInc)  
Instagram: [@RCP\\_Design\\_Inc](https://www.instagram.com/RCP_Design_Inc)  
Twitter: [@RCP\\_Design\\_Inc](https://twitter.com/RCP_Design_Inc)  
LinkedIn: [Rcp Design, Inc](https://www.linkedin.com/company/RcpDesignInc)