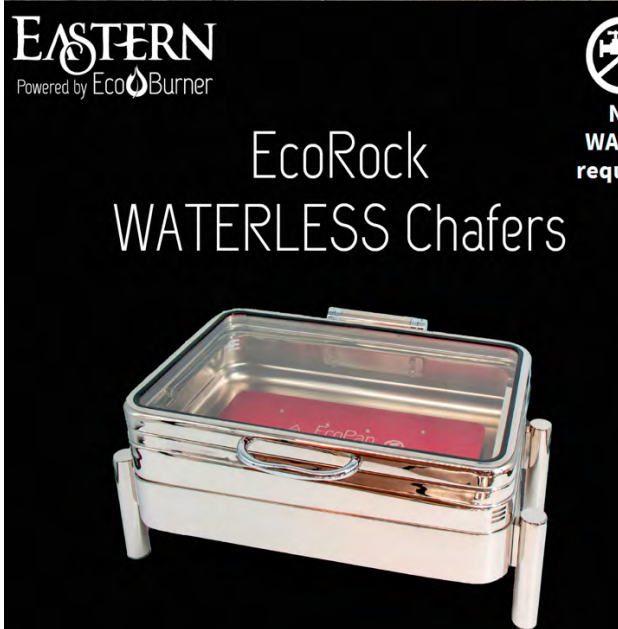


# EASTERN TABLETOP PRESENTS



**Prima Marketing Group, LLC**

[www.primamarketinggroup.com](http://www.primamarketinggroup.com)

Showroom by Appt: 4430 N Civic Center Plaza, Suite #103, Scottsdale AZ 85251

602-373-2325

# REVO

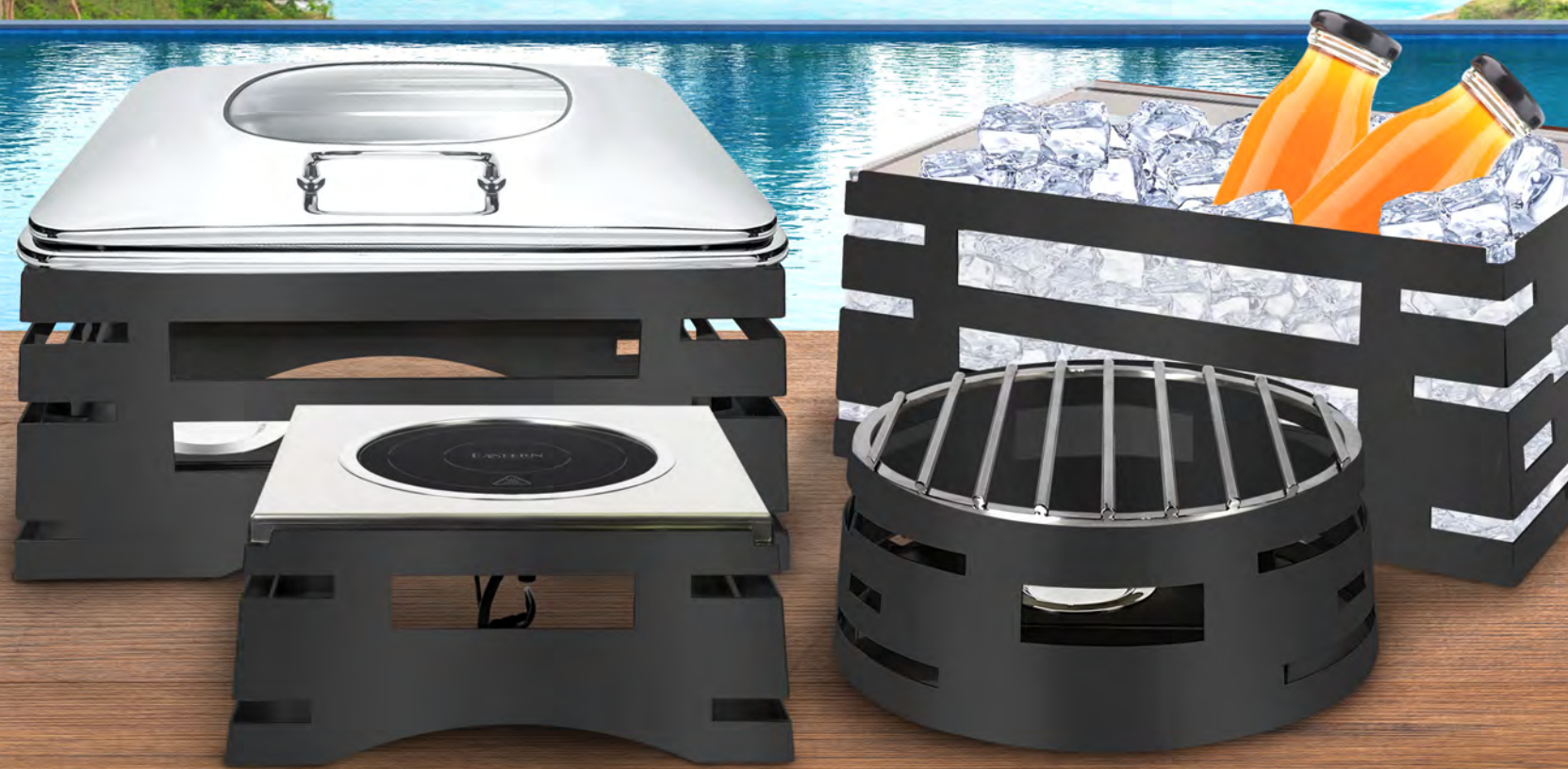
COLLECTION

EASTERN  
TABLETOP



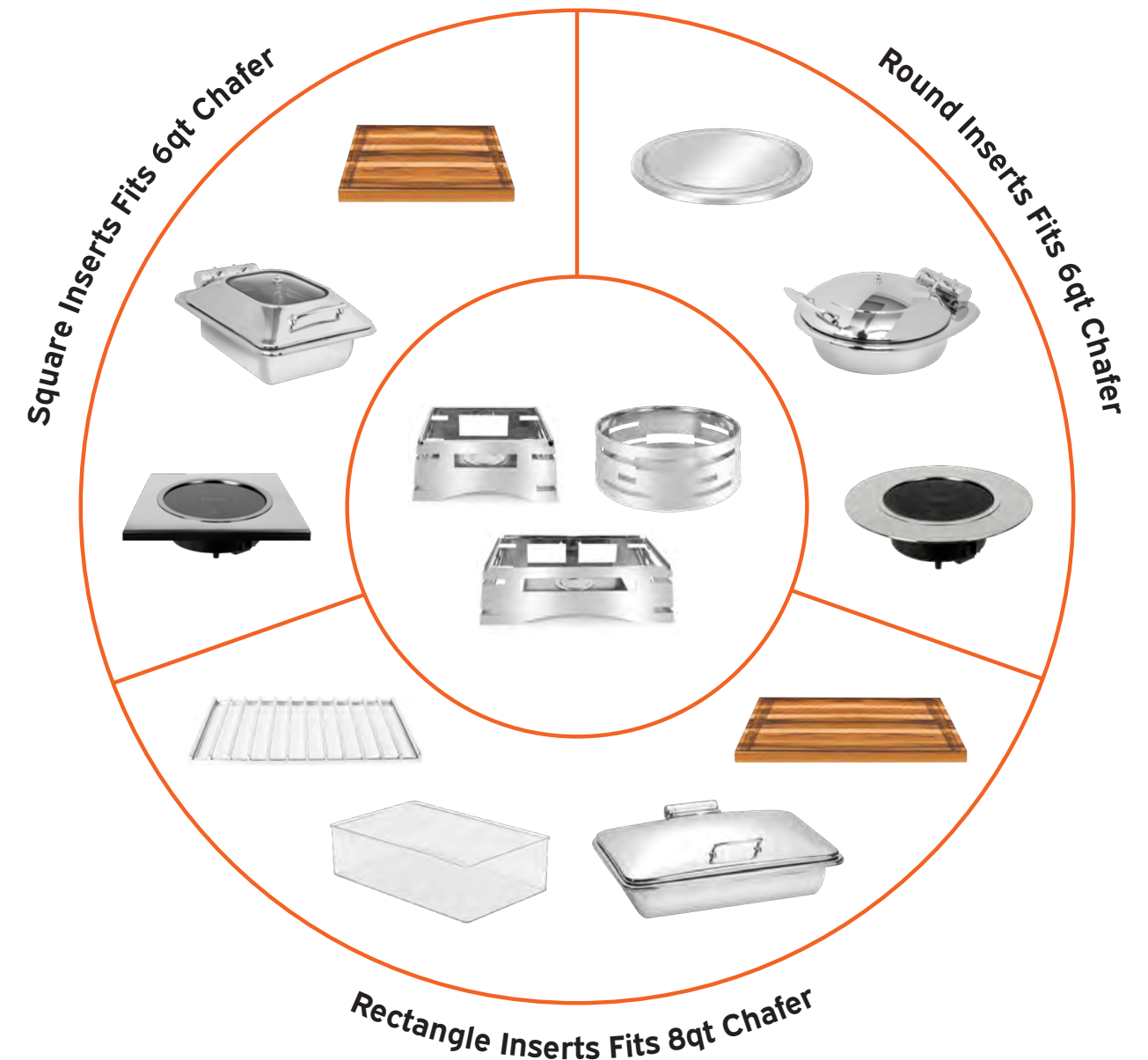
# From Grill to Chill

IT'S THE ALL-IN-ONE REVO COLLECTION



ONE BASE, ENDLESS POSSIBILITIES.

## THE REVO-LUTIONARY BUFFET SOLUTION: Revolving Around Your Needs



# POLISHED STAINLESS STEEL STANDS

\*All stands are also available in brushed stainless steel.



TAPERED TALL SQUARE STAND  
#32274

Top: 15 1/8" L x 14 1/8" W Bottom: 16 5/8" L x 15 5/8" W  
Height: 10"



TAPERED SHORT SQUARE STAND  
#32273

Top: 15 1/8" x 14 1/8" Bottom: 16 5/8" x 15 5/8"  
Height: 7" H



TAPERED TALL ROUND STAND  
#32278

Top: 16 3/4" D Bottom: 18 3/4" D  
Height: 10" H



TAPERED SHORT ROUND STAND  
#32279

Top: 16 3/4" D Bottom: 18 3/4" D  
Height: 7" H



TAPERED TALL RECTANGLE STAND  
#32275

Top: 22" x 14 1/8" Bottom: 23 7/8" x 16"  
Height: 10" H

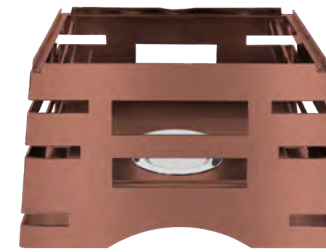


TAPERED SHORT RECTANGLE STAND  
#32276

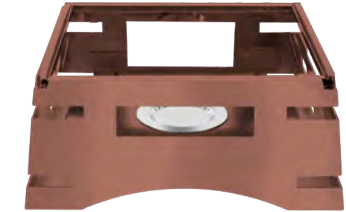
Top: 22" x 14 1/8" Bottom: 23 7/8" x 16"  
Height: 7" H

# XYLO COLOR STANDS

Watch live video  
for this product.



TAPERED TALL SQUARE STAND COPPER  
#32274CP



TAPERED SHORT SQUARE STAND COPPER  
#32273CP

COPPER



TAPERED TALL ROUND STAND BRONZE  
#32278RZ



TAPERED SHORT ROUND STAND BRONZE  
#32279RZ

BRONZE



TAPERED TALL RECTANGLE STAND BLACK  
#32275MB



TAPERED SHORT RECTANGLE STAND BLACK  
#32276MB

BLACK

From Stainless Steel...

To Sophisticated XYLO Colors

## SQUARE STAND | POLISHED STAINLESS STEEL

\*All stands are also available in brushed stainless steel.



TAPERED TALL SQUARE STAND  
#32274



TAPERED SHORT SQUARE STAND  
#32273



5-STAR SQUARE CHAFER - GLASS | 6qt  
#3934G



5-STAR SQUARE CHAFER | 6qt  
#3934



4-STAR SQUARE CHAFER - GLASS | 6qt  
#3914G



4-STAR SQUARE CHAFER | 6qt  
#3914



SQUARE INDUCTION  
#3229IND  
13 3/4 X 13 7/8



SQUARE GRILL  
#32273GT  
13 3/4 X 13 7/8



SQUARE GRIDDLE  
#32273AT  
13 3/4 X 13 7/8



SQUARE BUTCHER BLOCK  
#32273W



# Mix, Match & Reimagine

Revo's Versatile Collections For Limitless Setups

## ROUND STAND | POLISHED STAINLESS STEEL

\*All stands are also available in brushed stainless steel.



TAPERED TALL ROUND STAND  
#32278



TAPERED SHORT ROUND STAND  
#32279



5-STAR ROUND CHAFER - GLASS | 6qt  
#3938G



5-STAR ROUND CHAFER | 6qt  
#3938



4-STAR ROUND CHAFER - GLASS | 6qt  
#3918G



4-STAR ROUND CHAFER | 6qt  
#3918



ROUND INDUCTION  
#32241IND  
16 1/4" D



ROUND GRILL  
#32279GT  
16 1/4" D



ROUND GRIDDLE  
#32279AT  
16 1/4" D



ROUND BUTCHER BLOCK  
#32279W



ROUND ICE BIN  
#32278IB

## RECTANGLE STAND | POLISHED STAINLESS STEEL

\*All stands are also available in brushed stainless steel.



TAPERED TALL RECTANGLE STAND  
#32275



TAPERED SHORT RECTANGLE STAND  
#32276



5-STAR RECTANGLE CHAFER - GLASS | 8qt  
#3935G



5-STAR RECTANGLE CHAFER | 8qt  
#3935



4-STAR RECTANGLE CHAFER - GLASS | 8qt  
#3915G



4-STAR RECTANGLE CHAFER | 8qt  
#3915



RECTANGLE INDUCTION  
#32256IND  
22 1/2" x 14 3/4"



WATER PAN ADAPTOR  
#32275ADW  
22 1/2" x 14 3/4"



RECTANGLE GRILL  
#32276GT  
21 3/4" x 13 x 3/4"



RECTANGLE GRIDDLE  
#32276AT  
21 3/4" x 13 x 3/4"



RECTANGLE BUTCHER BLOCK  
#32276W



RECTANGLE ICE BIN  
#32275IB




Watch live video for this product.

# Build Your Perfect Buffet;

Revo's Modular Bases & Inserts For Endless Combinations



 Watch live video for this product.

Watch live video  
for this product.

**Revo Chafer Stands & LeXus Risers**  
**Make the Ultimate Duo**  
It's a Match Made in Culinary Heaven!





## REVO Combos | RECTANGLE STAND

### Rectangle Stand | Short

322066IND - Rectangle Stand + Adaptor + Cooking Induction #806IND

322061IND - Rectangle Stand + Adaptor + 600W Induction #801IND

322063IND - Rectangle Stand + Adaptor + 300W Induction #803IND

32206GT - Rectangle Stand + Grill

32206AT - Rectangle Stand + Griddle

32206W - Rectangle Stand + Butcher Block

### Rectangle Riser | Tall

32205 - Rectangle Stand + 5-Star Crown Vessel

32215 - Rectangle Stand + 4-Star Vessel

32205IB - Rectangle Stand + Ice Bin

32205ADW - Rectangle Stand + Water Pan Adaptor

## REVO Combos | SQUARE STAND

### Square Stand | Short

322031IND - Square Stand + Adaptor + 600W Induction #801IND

322033IND - Square Stand + Adaptor + 300W Induction #803IND

32203GT - Square Stand + Grill

32203AT - Square Stand + Griddle

32203W - Square Stand + Butcher Block

### Square Stand | Tall

32204 - Square Stand + 5-Star Crown Vessel

32214 - Square Stand + 4-Star Vessel

## REVO Combos | ROUND STAND

### Round Riser | Short

322091IND - Round Stand + Adaptor + 600W Induction #801IND

322093IND - Round Stand + Adaptor + 300W Induction #803IND

32209GT - Round Stand + Grill

32209AT - Round Stand + Griddle

32209W - Round Stand + Butcher Block

### Round Riser | Tall

32208 - Round Stand + 5-Star Crown Vessel

32218 - Round Stand + 4-Star Vessel

32208IB - Round Stand + Ice Bin

### Corporate Headquarters, Showroom & Warehouse:

Eastern Tabletop Manufacturing Company Inc.  
50 Ingham Avenue  
Bayonne NJ 07002

**Telephone:**  
1-718-240-9595

**Toll Free:**  
1-888-422-4142

**Email:**  
sales@easterntabletop.com

Visit [www.EasternTableTop.com](http://www.EasternTableTop.com) for full product details.



Watch live video  
for this product.

EASTERN  
TABLETOP



EASTERN  
TABLETOP


# LIGHTED LEVELS





# LIGHTED LEVELS

Let your food shine.

 Watch live video  
for this product.

Watch live video  
for this product.



# RISE ABOVE THE ORDINARY


- 3 Riser Sizes
- 2 Height Levels
- Lighted & Non-Lighted Risers
- Flat & Angled Tray Position

# SETTING THE STAGE FOR FLAVOR

Lighted Levels - Glow Up Your Buffet



- All risers are fashioned to match the standardized sizes of Gastronome food pans, which are widely employed in food service.
- All risers are available with or without LED lighting, Mix & Match.
- Connect risers with shelf connectors for an elegant buffet look.
- Risers can be flipped to achieve increased elevation.
- Risers are crafted to securely support trays in both flat and angled positions.
- Can be utilized as a warm or cold buffet.
- Risers fit a standard size food pan or waterless eco pan.

 Watch live video for this product.



## TRAYS + PANS

An eagle-eyed peek at the laminate trays & boards snugly perched on the risers.



“Design is not just what it looks like and feels like. Design is how it works.” - Steve Jobs

- Waterproof
- Reinforced corners
- Wood Look - Laminate Quality
- Riser available in XYLO finish
- Deep tray and Flat shelves available

## LIGHTED LEVELS | RISERS, SHELVES, TRAYS



Rectangle Tall Lighted Riser #8800LS  
Rectangle Tall Non-Lighted Riser #8806S  
21 3/8" x 13 3/8" x 11 3/8"H



Rectangle Short Lighted Riser #8803LS  
Rectangle Short Non-Lighted Riser #8809S  
21 3/8" x 13 3/8" x 6"H



Rectangle Shelf #8853GG  
21 3/8" x 13 3/8" x 3/4"H



Rectangle Tray #8850GG  
21 3/8" x 13 3/8" x 1 1/2"H (ID)



Narrow Lighted Tall Riser #8802LS  
Narrow Non-Lighted Tall Riser #8808S  
21 3/8" x 7 7/8" x 11 3/8"H



Narrow Short Lighted Riser #8805LS  
Narrow Short Non-Lighted Riser #8811S  
21 3/8" x 7 7/8" x 6"H



Narrow Shelf #8855GG  
21 3/8" x 7 7/8" x 3/4"H



Narrow Tray #8852GG  
21 3/8" x 7 7/8" x 1 1/2"H (ID)



Square Tall Lighted Riser #8801LS  
Square Tall Non-Lighted Riser #8807S  
13 3/8" x 11" x 11 3/8"H



Square Short Lighted Riser #8804LS  
Square Short Non-Lighted Riser #8810S  
13 3/8" x 11" x 6"H



Square Shelf #8854GG  
13 3/8" x 11" x 3/4"H



Square Tray #8851GG  
13 3/8" x 11" x 1 1/2"H (ID)

## LIGHTED LEVELS | CONNECTORS, PANS, COVERS

Tall Shelf Connector #8895  
23" x 11 3/4" x 4"H



Flipped Connector

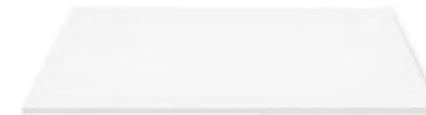
Deep Shelf Connector #8896  
23" x 11 3/4" x 8"H



Flipped Connector



Frosted Acrylic Plastic Shelves (Connector sold separately)  
Rectangle #8880AC - 21 3/8" x 13 3/8" x 3/8"H  
Narrow #8882AC - 21 3/8" x 7 7/8" x 3/8"H  
Square #8881AC - 13 3/8" x 11" x 3/8"H



Porcelain Food Pan  
8Qt. #PFP115  
4Qt. #PFP117  
2/4 #PFP116



Acrylic Hinged Roll Top Lid Cover  
#8886ACL  
21 9/16" X 13 11/16" x 9 1/2"H



Acrylic Clear Insert Ice Bin  
#8887IB  
20" X 12" x 6"H



Induction #8885IND  
21 3/8" x 13 3/8" x 3/4"H



## LIGHTED LEVELS COMBOS | FULL SIZE RECTANGLE RISER

### Full Size Rectangle Riser | Tall | Lighted

8700LSG - Riser + Shelf  
8701LTG - Riser + Tray  
8702LAC - Riser + Acrylic Shelf  
8703LP - Riser + Porcelain Pan  
8704LIND - Riser + Shelf + Round Induction

### Full Size Rectangle Riser | Short | Lighted

8731LSG - Riser + Shelf  
8732LTG - Riser + Tray  
8733LAC - Riser + Acrylic Shelf  
8734LP - Riser + Porcelain Pan  
8735LIND - Riser + Shelf + Round Induction

### Full Size Rectangle Riser | Tall | Non-Lighted

8700SG - Riser + Shelf  
8701TG - Riser + Tray  
8702AC - Riser + Acrylic Shelf  
8703P - Riser + Porcelain Pan  
8704IND - Riser + Shelf + Round Induction

### Full Size Rectangle Riser | Short | Non-Lighted

8731SG - Riser + Shelf  
8732TG - Riser + Tray  
8733AC - Riser + Acrylic Shelf  
8734P - Riser + Porcelain Pan  
8735IND - Riser + Shelf + Round Induction

## LIGHTED LEVELS COMBOS | SQUARE RISER

### Square Riser | Tall | Lighted

8721LSG - Riser + Shelf  
8722LTG - Riser + Tray  
8723LAC - Riser + Acrylic Shelf  
8724LP - Riser + Porcelain Pan

### Square Riser | Short | Lighted

8751LSG - Riser + Shelf  
8752LTG - Riser + Tray  
8753LAC - Riser + Acrylic Shelf  
8754LP - Riser + Porcelain Pan

### Square Riser | Tall | Non-Lighted

8721SG - Riser + Shelf  
8722TG - Riser + Tray  
8723AC - Riser + Acrylic Shelf  
8724P - Riser + Porcelain Pan

### Square Riser | Short | Non-Lighted

8751SG - Riser + Shelf  
8752TG - Riser + Tray  
8753AC - Riser + Acrylic Shelf  
8754P - Riser + Porcelain Pan

## LIGHTED LEVELS COMBOS | NARROW RISER

### Narrow Riser | Tall | Lighted

8711LSG - Riser + Shelf  
8712LTG - Riser + Tray  
8713LAC - Riser + Acrylic Shelf  
8714LP - Riser + Porcelain Pan

### Narrow Riser | Short | Lighted

8741LSG - Riser + Shelf  
8742LTG - Riser + Tray  
8743LAC - Riser + Acrylic Shelf  
8744LP - Riser + Porcelain Pan

### Narrow Riser | Tall | Non-Lighted

8711SG - Riser + Shelf  
8712TG - Riser + Tray  
8713AC - Riser + Acrylic Shelf  
8714P - Riser + Porcelain Pan

### Narrow Riser | Short | Non-Lighted

8741SG - Riser + Shelf  
8742TG - Riser + Tray  
8743AC - Riser + Acrylic Shelf  
8744P - Riser + Porcelain Pan



**Corporate Headquarters, Showroom & Warehouse:**

Eastern Tabletop Manufacturing Company Inc.  
50 Ingham Avenue  
Bayonne NJ 07002

**Telephone:**

1-718-240-9595

**Toll Free:**

1-888-422-4142

**Email:**

[sales@easterntabletop.com](mailto:sales@easterntabletop.com)

Visit [www.EasternTableTop.com](http://www.EasternTableTop.com) for full product details.

EASTERN  
TABLETOP



**EASTERN**  
Powered by EcoBurner

Prima Marketing Group, LLC

602-373-2325



**No  
WATER  
required**

# EcoRock WATERLESS Chafers



**Industry breakthrough!**

# EcoRock WATERLESS Chafers

## 7-star Features



Reinforced,  
toughened glass  
for clear view

Cordless,  
no plug or  
electrics  
needed

Hydraulic  
hinge for  
soft-close

Hotplate used to  
keep food hot  
instead of water pan

Removable lid,  
base and  
waterless chafers  
for easy cleaning

## Powered by EcoBurner



**Reduce fuel usage by  
50% - only 1 EcoBurner  
needed indoors**

# Available in three Sizes

- 8QT Rectangle #EB15375G
- 6QT Square #EB15374G
- 6QT Round #EB15378G

A stainless steel food pan is included with every EcoRock WATERLESS CHAFER





## WATERLESS

No handling hot water.  
No steam or condensation.  
Safer for staff.  
More sustainable.



## INDOORS/ OUTDOORS

Windproof - suitable for  
indoor or outdoor buffets.  
No electricity, cables or  
batteries needed.



## LABOUR SAVINGS

Heats up in less than 10 mins.  
Save staff hours from filling,  
heating, transporting and  
disposing of water.

[www.us.ecoburner.com](http://www.us.ecoburner.com)  
[sales@easterntabletop.com](mailto:sales@easterntabletop.com)

# EASTERN

Powered by EcoBurner

## BUFFET COLLECTION

2024



ZERO WATER

ZERO WASTE

LESS CARBON

*You can now choose to*  
**Go GREEN with**

# EASTERN

Powered by EcoBurner

For over seven decades, Eastern Tabletop has been a reputable supplier of high-quality products to the hospitality industry in the United States. Throughout this history, the company has consistently pursued innovation in buffet equipment to meet the evolving needs of its customers. This commitment to progress has recently led to a strategic partnership with EcoBurner.

While EcoBurner may be a newcomer to some U.S. hotels, its influence on global buffet practices is significant. The premium product range offered by EcoBurner presents buffet-serving venues with a unique opportunity to minimize their environmental impact. The EcoServe and EcoPan, powered by EcoBurner, revolutionize buffet setups by eliminating the need for water, reducing carbon emissions by up to 75%, and providing a sustainable alternative to single-use products such as gels and wicks.

Eastern Tabletop's chafing dishes can now be 'Powered by EcoBurner,' allowing establishments to capitalize on these environmental benefits. By embracing this partnership, Eastern Tabletop ensures that their buffets align with sustainable practices, paving the way for a more eco-friendly future.





# Powered by EcoBurner



ZERO WATER

ZERO WASTE

LESS CARBON

# TABLE OF Contents

What is the EcoBurner	8
Demonstrated Savings	10
Using the EcoBurner	14
With EcoServe	17
EcoRock WATERLESS Chafers	18
EcoRock Accessories	20
EcoServe GN	22
EcoServe GN Accessories	26
EcoServe Round	30
EcoServe Round Accessories	32
With EcoPan	34
Rolltop Chafers with EcoPan	36
With EcoTile	37
With EcoBoost MINI	40
Coffee Urns with EcoBoost MINI	43
Customer Experiences	44
Customer Supports	46
Product Codes	50



The background of the entire page is a close-up, macro photograph of vibrant green moss. The moss is densely packed and covers the entire surface, with some areas appearing slightly more saturated in color than others due to lighting. The overall effect is a textured, natural green backdrop.

**REDUCE**

**WATER**

**WASTE**

**CARBON**

**COST**

**TIME**

## *ECOBURNER* **GOALS**

### **REPLACE GELS AND WICKS**

We believe if those little pots were created today, they would never be allowed near food. Accidents and staff injuries happen too often when gels or wicks are being used and we want to stop that. They are also full of toxic chemicals that usually end up in landfill after every service making them single-use items that are detrimental to our environment.

### **STOP WASTING WATER**

There's no need for staff to waste time, effort and fuel transporting, heating and disposing of water at the buffet. It wastes energy and resources that are precious and EcoBurner can offer venues a better way thanks to our hotplate technology that eliminates the need for water completely.



WHAT IS THE  
**EcoBurner**



A refillable burner that's placed under chafing dishes to provide portable heat for buffet food.

The EcoBurner is refilled with EcoBurner fuel after service so that every drop of fuel is used or saved for the next service. Each can of EcoBurner fuel gives up to 36 hours of burn time.

It's a SAFER CLEANER & GREENER alternative to single-use gels and wicks.



**ECOBURNER #EB18999**



**ECOBURNER FUEL #EB19009**



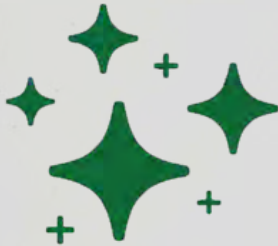
The call to eliminate gel and wick pots from hospitality settings is getting louder. Hotel managers realise the dangers of having these pots of chemicals near food and most have heard stories of terrible injuries resulting from the mishandling of these single-use items. EcoBurner is different, it's the safer option for staff to handle and guests to be around.

- ✓ Always cool-to-touch
- ✓ Switches off if overturned or over-heats
- ✓ No open chemicals near food

## SAFER



## CLEANER

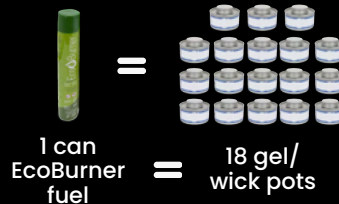


Every Food & Beverage manager in the industry is all too familiar with the black smoky residue left on the underside of chafing dishes when gels or wicks are being used as a heat source. EcoBurner is a clean burn so staff spend less time cleaning cookware.

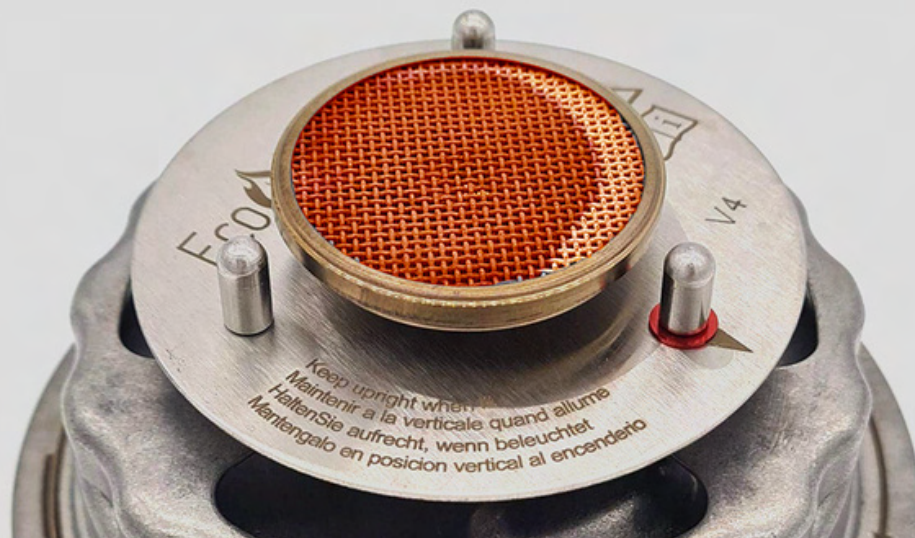
- ✓ No black, smoky residue left on cookware.
- ✓ No toxic fumes = pleasant atmosphere for guests.
- ✓ No risk of fuel spills.

The EcoBurner is refillable so every drop of fuel is either used or saved for the next service meaning ZERO FUEL WASTE. Each EcoBurner fuel can is the equivalent of 18 gel/wick pots so vast amounts of waste are prevented from going to landfill. Carbon Footprint Ltd. certifies that EcoBurner emits up to 75% less carbon than gels/wicks.

- ✓ Zero Fuel Waste
- ✓ Zero Waste to Landfill
- ✓ Up to 75% less Carbon than gels/wicks



## GREENER



## KEY ASSUMPTIONS FOR CALCULATIONS



20 chafers



In use twice a day



For 3 hours each service



\$1.90 per 4-hour gel pot  
\$15 per 36-hr. EcoBurner fuel can



# SAVINGS

By switching to EcoBurner, venues can benefit from significant savings so we've compared a traditional water-based chafing dish buffet using gels to a WATERLESS (EcoPan or EcoServe) buffet powered by EcoBurner. The buffet is served using 20 chafers, twice a day, for three hours each service.

Savings are calculated for **WATER, WASTE, CARBON, COST & TIME**

**PER DAY**

**31.7  
US gallons**

**85.7 Gel Pots  
(9.4 lbs)**

**36.2 lbs**

**\$101.6**

**5.33 hrs.**

**WATER**

**WASTE**

**CARBON**

**COST**

**TIME**

**PER YEAR**

**11,571  
US gallons**

**31,280 Gels  
(1.72 Tons)**

**6.6 Tons**

**\$37,084**

**1,946 hrs.**



# SAVINGS

## KEY ASSUMPTIONS FOR CALCULATIONS



20 chafers



In use twice a day



For 3 hours each service



\$1.90 per 4-hour gel pot  
\$15 per 36-hr. EcoBurner fuel can

## WATER

Every water-based chafing dish uses approximately 0.264 gal (US) of water per hour:

20 (Chafers) X 2 (twice a day) X 3 (Hrs. per service) = 120 hours per day X 0.264 (0.264 gal per hour) = 31.7 gallons per day

**31.7 gallons (US) of water are saved every day.**

That's the equivalent of **11,571 gal (US) per year** if this buffet is ran every day.

**31.7 gal (US) per day**



**11,571 gal (US) WATER per year**

By eliminating the need for water at the buffet, hotels benefit from:

- Reduced water usage
- Reduced staff hours handling water.
- Reduced risk of injury from handling water.
- Reduced energy usage from not having to heat up water.

**85 Gel Pots (9.4 lbs) per day**



**31,280 Gels (1.71 Tons waste) per year**

Hotels reduce waste in a number of ways:

- Reduced fuel waste - every drop of EcoBurner fuel is used unlike gels/wicks that are often disposed of with left-over fuel remaining at the end of every service.
- Reduced packaging waste - Each EcoBurner fuel can is the equivalent of 18 cans of gels/wicks.
- Recyclable packaging - EcoBurner fuel cans are fully recyclable!

## WASTE

20 (Chafers) X 2 (twice a day) X 3 (Hrs. per service) = 120 hours per day.



Divide by 0.7 (typically 30% gel/wick fuel wasted every service) = **171.4 hrs gel fuel needed.**



Divide by 2 (2-hour gel) = **85.7 gel pots used.**



Multiply by 1.76oz (Each wasted gel pot weighs approx. 1.76oz) = **150.8oz (9.4 lbs) waste per day**

**36.24 lbs  
day**



**6.6 Tons CARBON  
per year**

Carbon Footprint Ltd., an independent UK body, certifies EcoBurners' carbon savings. Their report compares carbon emissions from various heating methods used in a three-hour buffet service: DEG, Ethanol, Methanol gels/wicks, Induction, and EcoBurner. When EcoBurner is compared to the average of the gels/wick, the savings per hour are 0.137 kg CO<sub>2</sub>e.

## CARBON

**20 (Chafers) X 2 (twice a day) X 3 (Hrs. per service) = 120 hours per day.**

Multiply by the carbon savings per hour compared to EcoBurner as certified by Carbon Footprint Ltd.



120hrs X 0.137 Average carbon savings gels/wicks per hour) = **16.44kg Carbon saved per day**  
**= 36.24 lbs**

## COST

**20 (Chafers) X 2 (twice a day) X 3 (Hrs. per service)  
= 120 hours**

### Cost of EcoBurner

1 EcoBurner is required under every chafing dish so 120 hours of EcoBurner fuel is needed:  
\$15 divided by 36hrs. per can = \$0.42 per hr.  
\$0.42 multiplied by 120 hours = \$50.40

### Cost of Gel Pots

2 gel pots are required under every chafing dish  
2 gels x 20 chafers x 2 (twice a day) = 80 gels x  
\$1.90 (per gel) = \$152

**\$152 (Cost of gels) minus \$50.40 (Cost of EcoBurner fuel) = \$101.6 savings per day**

**\$101.6 per  
day**



**\$37,084 per year  
66.8% savings**

Each market is very different so these costs are based on each 4-hr gel pot costing \$1.90. We've taken a global average of EcoBurner fuel costing customers \$15 per can. The cost savings can vary depending on fuel costs but this typical buffet shows a very positive cost saving to venues who switch to EcoBurner.

**5.33 hrs  
per day**



**1,946 hrs saved per year**

When hotels opt for traditional water-based chafing dishes, their staff must constantly tend to filling, heating, monitoring water levels, and ultimately disposing of the water after service. By switching to EcoServe or EcoPan, this eliminates the unnecessary water handling, saving roughly 8 minutes per chafing dish.

## TIME

**8 minutes savings per chafer X 20 chafers  
= 160 minutes**



Multiply by 2 (twice a day) = 320 mins per day



Divide by 60 (change to hours) = **5.33 hrs. per day**

**This equates to 1,946 hours per year which significantly reduces cost of staff.**

USING THE  
**ECOBURNER**

4 OPTIONS

**1** **With EcoServe**  
MIN 50% SAVINGS

**ZERO WATER**

Use an EcoBurner with any of the EcoServe range of chafing dishes for optimum savings and premium presentation options.

**2** **With EcoPan**  
MIN 50% SAVINGS

**ZERO WATER**

Remove the waterpan of existing chafing dishes and use EcoPan instead to eliminate the need for water.

**3** **With EcoTile**  
MIN 50% SAVINGS

**ZERO WATER**

Use a specifically designed EcoTile on an Eastern HUB, ZOZZ or Q-BIK buffet system to create an EcoBurner mobile buffet. Simply clip the EcoBurner into the provided clips.

**4** **With EcoBoost**  
20-30% SAVINGS

Clip an EcoBoost MINI bracket onto an EcoBurner and use under any water-based traditional chafing dish to replace gels/wicks.

USING THE  
**ECOBURNER**

4 OPTIONS

**1** **EcoServe**  
MIN 50% SAVINGS



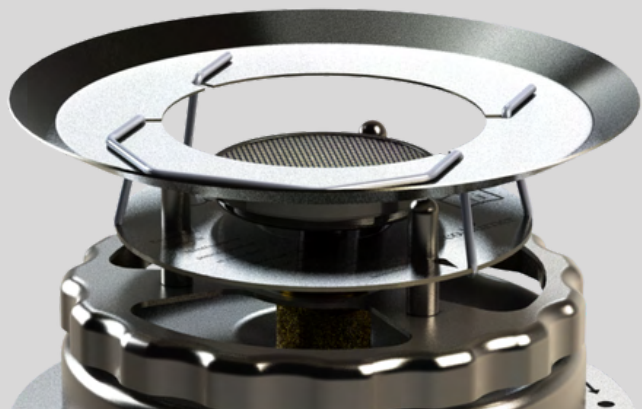
**2** **EcoPan**  
MIN 50% SAVINGS



**3** **EcoTile**  
MIN 50% SAVINGS



**4** **EcoBoost**  
20-30% SAVINGS





### **WATERLESS**

- ✓ No more filling, heating or wasting water.
- ✓ Better quality food as no steam from hot water.
- ✓ Saves water - one of earth's most precious resources.

### **QUICK & SAFE**

- ✓ Heats up in less than 10 minutes.
- ✓ Simple, safer and slicker process for swapping out food dishes.
- ✓ No electricity or cables needed.

## *BENEFITS OF*

# **EcoServe, EcoPan & EcoTile**

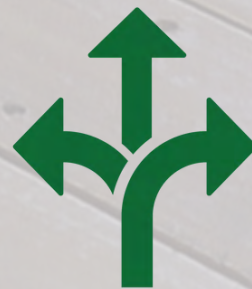
## **WATERLESS CHAFERS**

### **PORTABLE & WINDPROOF**

- ✓ Radiant heat that distributes evenly & is WINDPROOF.
- ✓ No electric cables so buffet can be set in any location.
- ✓ ideal for outdoor dining as fully portable and windproof.

### **FLEXIBLE/ MODULAR**

- ✓ Build the buffet to suit using different styles, colours and quantities.
- ✓ Large scale resorts or small corporate events can all be catered for using the same equipment.



WITH **EcoServe**

1

The EcoServe range of chafing dishes offer customers premium buffet presentation options that are completely WATERLESS and powered by EcoBurner, resulting in water, waste, carbon, cost and time savings!

**ZERO WATER  
ZERO WASTE  
LESS CARBON**



**ECOROCK WATERLESS CHAFERS**

The EcoRock WATERLESS Chafer range mirrors the widely popular traditional style of chafing dishes, delivering this classic look with added advantages of zero water usage, zero waste generation, and a reduced carbon footprint.

- 8QT Rectangle
- 6QT Square
- 6QT Round



**ECOSERVE GN**

Crafted specifically for commercial kitchens, the EcoServe GN is designed to fit standard gastronorm 1/1 sizing. Available in the same six finishes as the EcoServe Round, so that assorted units can be used to craft buffets tailored to chefs' preferences/styles.

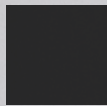


**ECOSERVE ROUND**

The EcoServe Round is available in a large and a small size that are different heights. This allows chefs to create unique dining experiences using different sizes and finishes to complement their individual style.

Large & Small





ECOSERVE

## EcoRock WATERLESS Chafers

The timeless appeal of traditional hinged chafing dishes persists globally, and now EcoBurner offers this classic style, paired with the advantages of being WATERLESS, generating zero waste, and emitting less carbon. Venues can now embrace the traditional look while enhancing sustainability by opting for these EcoRock WATERLESS Chafers

Available in 8QT Rectangle, 6QT Square and 6QT Round, these chafers cater to venues that prefer a non-minimalist style.

**8QT RECTANGLE** #EB15375G

**6QT SQUARE** #EB15374G

**6 QT ROUND** #EB15378G





**8QT RECTANGLE**  
**#EB15375G**



**6QT SQUARE**  
**#EB15374G**



**6QT ROUND**  
**#EB15378G**



**STACKABLE**

Each EcoRock WATERLESS Chafer is equipped with connectors, enabling effortless stacking for convenient storage.





ECOROCK WATERLESS CHAFERS

## Accessories

### RECTANGLE GN 1/1

All the GN 1/1 dishes that complement the EcoServe GN (as featured on pages 26 & 27) are also compatible with the EcoRock WATERLESS 8QT Rectangle chafer.



### SQUARE GN 2/3 & ROUND



## Premium Porcelain Dishes

Each EcoRock WATERLESS Chafers unit includes a standard stainless steel food pan insert, yet to enhance the buffet's visual appeal, a selection of robust porcelain dishes is also available to complement the collection.

These dishes can be used directly from the oven to the buffet, streamlining service for staff and ensuring a consistently attractive buffet display.



**DEEP PORCELAIN  
DISH #EB15400**



**SHALLOW PORCELAIN  
DISH #EB15209**



**DIVIDED PORCELAIN  
DISH #EB15401**



**PEARL BLACK NEOFUSION  
PORCELAIN DISH #EB15402**



**PEARL BLACK NEOFUSION PORCELAIN  
DISH - GN 2/3 #EB15406**

**WHITE PORCELAIN DISH - GN 2/3  
#EB15405**

**PEARL BLACK NEOFUSION PORCELAIN  
DISH - CLASSIC ROUND #EB15407**

**WHITE PORCELAIN DISH -  
CLASSIC ROUND #EB15404**





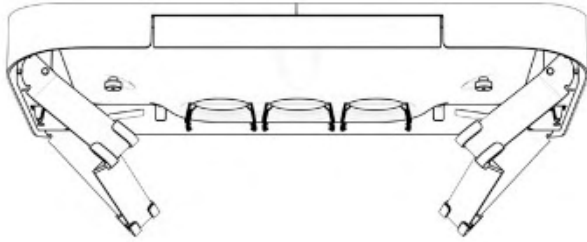
## ECOSERVE GN

Crafted to seamlessly integrate into global commercial kitchen setups, the EcoServe GN adheres to the standard gastronorm 1/1 size. It's available in the same six finishes as the EcoServe ROUND, empowering chefs to personalise the buffet's appearance to reflect their own unique style.

The Reinforced Glass Lid boasts industry-leading durability, built to withstand rigorous commercial use. Equipped with a soft-close hinge, it adjusts to accommodate various dish heights.

Incorporating an innovative **condensation recirculating system**, the EcoServe GN swiftly captures and evaporates condensate, while maintaining a clear view of the tempting dishes on offer for guests. This exclusive feature, unique to EcoServe, effectively mitigates issues caused by steam in typical buffet setups.

# SAVE SPACE



## FOLDABLE LEGS

The minimalist GN design includes foldable legs, easily tucked away when not in use. This effectively conserves valuable space.

With legs folded, an EcoServe GN measures a space-saving 20"x12"x3.2".

6 ECOSERVES



1 CHAFER

## STACKABLE

When stacked for storage, the EcoServe GNs occupy less space compared to a single traditional chafing dish.

This offers significant relief to venues struggling with the challenge of storing bulky chafers.

# ECOSERVE GN Features

**REINFORCED GLASS**  
For commercial use

**REMOVABLE GLASS LID**

**ADJUSTABLE LID HEIGHT**  
To accommodate various height dishes

**SOFT CLOSE HINGE**

**SILICONE MAT**  
To protect hot plate

**CONDENSATION CATCHER**  
To reduce moisture in food

**SILICONE FEET**  
To ensure non-slip





**POWDER-COATED BLACK #EB15320**

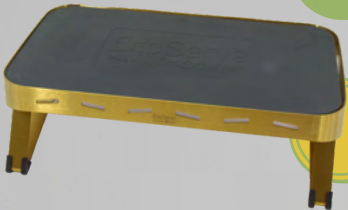


**POWDER-COATED WHITE #EB15313**



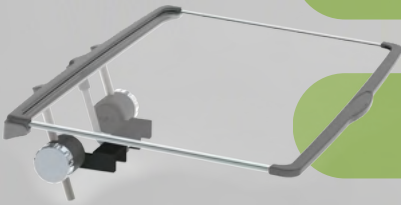
**POLISHED STAINLESS STEEL #EB15316**

**BRUSHED STAINLESS STEEL #EB15314**



**GOLD PVD #EB15317**

**COPPER PVD #EB15318C**



**REINFORCED GLASS LID #EB15311**



**ECOSERVE GN**  
**6 Colors**



ECOSERVE GN

# Accessories



## Premium Porcelain Dishes

A selection of carefully chosen, robust porcelain food pans are available to compliment the EcoServe GN. These dishes transition seamlessly from oven to buffet, simplifying service for staff and maintaining a consistently appealing buffet presentation.



**DEEP  
PORCELAIN  
DISH**  
#EB15400



**DIVIDED  
PORCELAIN  
DISH**  
#EB15401



**SHALLOW  
PORCELAIN  
DISH #**  
EB15209



**PEARL BLACK  
NEOFUSION  
PORCELAIN  
DISH #**  
EB15402



# Single-Serve Options

The grab-and-go trend is a lasting one! Providing individual portions allows chefs to pre-prepare dishes, ensuring consistent presentation from the first to the last guest. This minimises food handling by guests, reduces food waste, and encourages people to bring less to the table, further contributing to sustainability efforts!



**SQUARE  
DISH #EB15326  
LID #EB15329**

8 DISHES PER GN



**SMALL  
DISH #EB15324  
LID #EB15327**

12 DISHES PER GN



**LARGE  
DISH #EB15325  
LID #EB15328**

6 DISHES PER GN







The Residence, Bintan, Indonesia

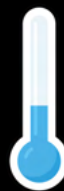


The Capella Hotel, Singapore

CHANGE TO COLD SERVICE WITH THE  
**EcoServe GN COOL PACK**



Easily switch from HOT to  
COLD service



using EcoBurners  
to heat or Cool Packs to chill



Simply freeze the GN COOL PACK overnight,  
and place it directly on the GN hot plate. Then,  
place pre-chilled dishes on top. This simple  
process allows users to effortlessly switch to  
cold service using the same equipment.



Ideal for serving seafood, salads, fruits, and  
desserts!

**ECOSERVE GN COOL PACK #EB15322**





## ECOSERVE ROUND

Available in large and small sizes, as well as six different colors, the EcoServe Round complements the EcoServe GN, enabling chefs to craft customised buffets with various configurations at different locations. This facilitates the effortless catering of both large and smaller events, leading to stunning buffet displays with zero water consumption, zero waste, and reduced carbon footprint.

-  **POWDER-COATED WHITE** | SM #EB15006 | LRG #EB15007
-  **POWDER-COATED BLACK** | SM #EB15004 | LRG #EB15005
-  **BRUSHED STAINLESS STEEL** | SM #EB15008 | LRG #EB15009
-  **POLISHED STAINLESS STEEL** | SM #EB15016 | LRG #EB15015
-  **GOLD PVD** | SM #EB15013 | LRG #EB15014
-  **COPPER PVD** | SM #EB15011C | LRG #EB15012C





C-Mauritius



Emirates Palace Hotel Abu Dhabi



Holiday Inn Express Dubai Internet City



# Premium Non-Stick Aluminium Dishes

These premium non-stick aluminium dishes boast the most robust coating available worldwide and are engineered to outlast other internally reinforced coatings. Designed to dock securely into the EcoServe Rounds, they are built to withstand commercial use in the busiest of kitchens.

**BLACK MOONSCAPE** | SM #EB15219 | LRG #EB15218

**ARCTIC GREY** | SM #EB15211 | LRG #EB15210



## ECOSERVE ROUND Accessories

### Round Glass Lids

Glass lids are available in large and small to fit both EcoServe Round dishes. These ensure food stays hot at the buffet while guests have full view of the delicious food on offer.



**ROUND GLASS LID** | SM #EB15301 | LRG #EB15302

### Pot Lid/ Spoon Rack

A convenient Pot Lid/ Spoon Rack to help keep the buffet space neat and tidy while guests serve themselves.



**POT LID/ SPOON RACK** #EB15300



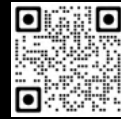
CHANGE TO COLD SERVICE WITH THE  
**EcoServe COOL PACK**



Easily switch from HOT to  
COLD service



using EcoBurners  
to heat or Cool Packs to chill



Simply remove the hotplate and the heat pan  
from the EcoServe Round and place a frozen  
COOL PACK onto the EcoServe frame and you  
can easily switch to cold service.



Perfect for seafood, salads, fruit and desserts!

**ECOSERVE COOL PACK | LRG #EB15305**



WITH **EcoPan**

2

Use existing chafing dishes but replace the waterpan with EcoPan to eliminate the need for water completely. This is a cost-effective method of going WATERLESS with minimal spend on new equipment.

**ZERO WATER  
ZERO WASTE  
LESS CARBON**

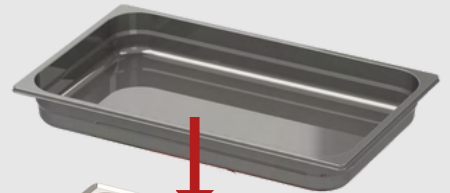


ECOPAN #EB15330



**Each EcoPan saves 581 US Gallons of water every year if used instead of a waterpan!**

Use existing food pan



Drop in NEW EcoPan

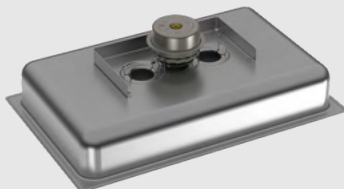


Use existing Chafer



Chef Jay from Lady Caroline & Chuck Kiley from Greenwald Sales & Marketing

**INDOORS**



Only 1 EcoBurner is needed for indoor buffets.



**OUTDOORS**

Use 2 EcoBurners outdoors.

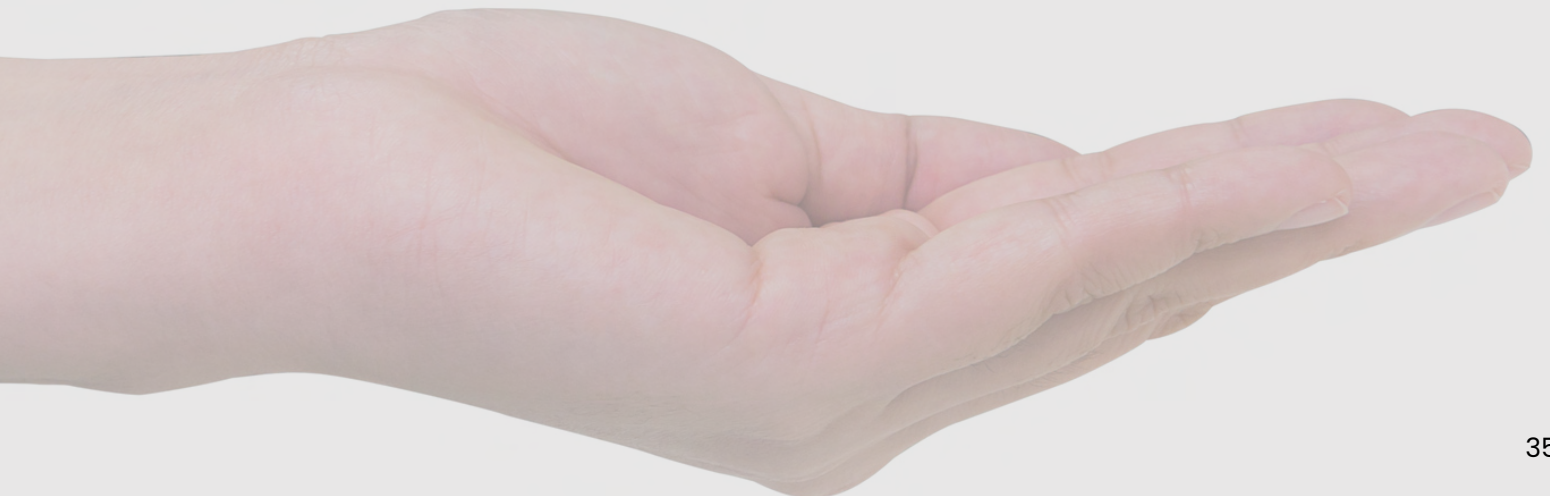
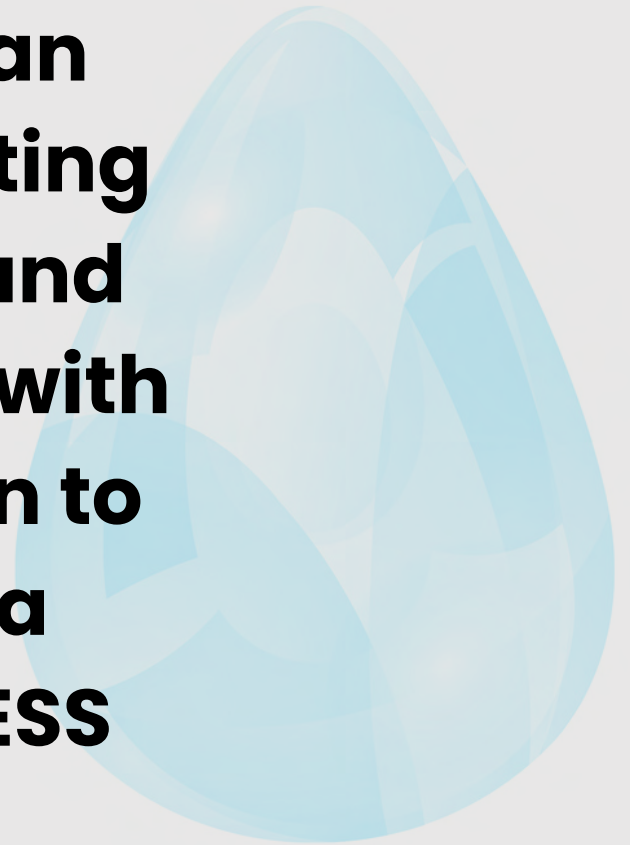


**SAVE  
WATER**

**SIMPLY**



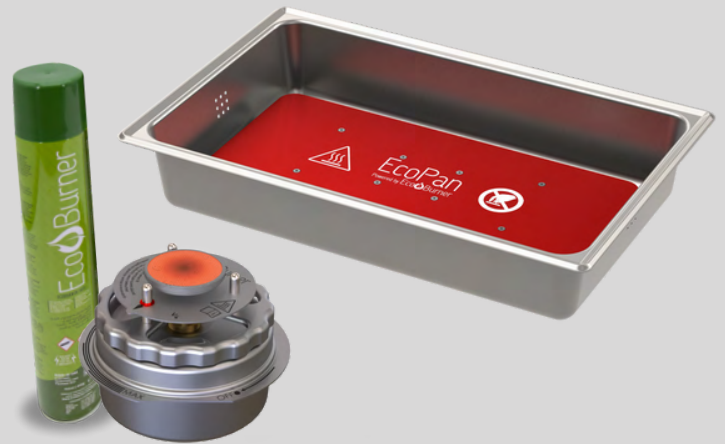
**Remove the  
water pan  
from existing  
chafers and  
replace it with  
an EcoPan to  
create a  
WATERLESS  
Buffet**





# WATERLESS 5-star RollTop Chafers

Now you can use Eastern Tabletop chafing dishes with an EcoPan to create a WATERLESS chafer, powered by EcoBurner instead of single-use gels or wicks. The high quality chafing dishes you know and love can now add to your sustainability goals too by reducing carbon and waste and eliminating water completely.



**PILLAR'D  
WATERLESS  
ROLLTOP  
CHAFFER  
#EE3124**



**P2  
WATERLESS  
ROLLTOP  
CHAFFER  
#EE3144**



**PARK AVENUE  
WATERLESS  
ROLLTOP  
CHAFFER  
#EE3114**



**QUEEN ANN  
WATERLESS  
ROLLTOP  
CHAFFER  
#EE3114QA**



WITH **3**  
**EcoTile**

Eastern TableTop offers a collection of collapsible buffets including the ZOZZ, HUB, and Q-BIK mobile units. With an interchangeable tile system, customers have the flexibility to switch out tiles among these three units based on their specific functions and desired locations.



**ZERO WATER  
ZERO WASTE  
LESS CARBON**



### **SINGLE ROUND WARMING TILE**

#### **#EB1804GB**

A tile with a single round hotplate allows customers to use one large round dish on any of the three mobile buffet systems. Simply clip an EcoBurner into the clips underneath for a consistent heat that keeps food warm anywhere!



### **DOUBLE ROUND WARMING TILE**

#### **#EB11803GB**

A tile with two round hotplates allows customers to keep two dishes of food hot at the buffet by simply clipping EcoBurners into the clips underneath for a consistent heat that requires no electricity or cables and can be moved to any location.



### **GN WARMING TILE**

#### **#EB1807GB**

The EcServe GN (sold separately) fits into the EcoTile GN and is then used on any of the ZOZZ, HUB or Q-BIK mobile buffets. EcoBurners are clipped into the EcoServe GN to provide the heat source that uses 75% less carbon, zero waste and zero water.





- **NO ELECTRICITY OR CABLES REQUIRED**
- **WINDPROOF & PORTABLE**
- **ECOTILES ARE INTERCHANGEABLE WITH THE ZOZZ, HUB AND Q-BIK MOBILE BUFFET SYSTEMS**



# Design your buffet to your own style

The EcoTile warming tiles can be mixed with any other Eastern tile to create your own buffet system according to your needs and style.

Complete selection of tiles available on [www.easterntabletop.com](http://www.easterntabletop.com)



## ECOTILE Accessories

Commercial-grade non-stick aluminum and reinforced porcelain dishes are available to order. These accessories enhance the presentation options for chefs using the HUB, ZOOZ, and Q-BIK systems. The dishes compatible with the EcoServe GN and EcoServe Round (Large) seamlessly fit these tiles. Refer to pages 26-27 & 32 for more details.



**GN Warming Tile with EcoServe GN, 2.6" Porcelain Dish and Reinforced GN Glass lid (sold separately).**



**Twin Round Warming Tile with Round Aluminium Dishes and Glass Lids (sold separately).**



WITH

4

# EcoBoost MINI

Attach an EcoBoost MINI bracket to the top of an EcoBurner and place it under chafing dishes for improved sustainability. Replace single-use gels or wicks for zero waste and less carbon!



**ZERO WASTE  
LESS CARBON**



**ECOBOOST MINI #EB11139**

## GRILL-TYPE CHAFERS

Use 1 EcoBurner on low with an EcoBoost MINI bracket under grill-type chafers. This will give a consistent, radiant heat that's perfect for foods that need more controlled heat such as melted cheese.



## HINGED CHAFERS

Use 2 EcoBurners on high with EcoBoost MINI brackets under traditional hinged chafing dishes. These are used instead of gels or wicks to reduce carbon by 75% and eliminate waste completely.



## ROLL-TOP CHAFERS

Use 2 EcoBurners on high with EcoBoost MINI brackets under roll-top chafing dishes. Simply replace the single-use gels or wicks for a safer, cleaner and greener buffet.



# **REDUCE CARBON & WASTE**

**Using only the  
EcoBurner with an  
EcoBoost MINI under  
any existing chafing  
dish or coffee urn  
will still reduce  
carbon and waste  
and make the buffet  
a safer system.**

# Coffee Urns

The Eastern range of coffee urns can now be heated using the EcoBurner with an EcoBoost MINI clipped on to the top for more efficient and consistent heat.



An EcoBoost MINI is required for efficient heating of coffee urns



## 5-STAR JAZZ ROCK COLLECTION

**5 Gallon #3285**  
**3 Gallon #3283**



## 4-STAR BALLERINA COLLECTION



**5 Gallon #3135**  
**3 Gallon #3133**  
**1.5 Gallon #3131**



## 4-STAR COLLECTIONS

**A Park Avenue - 5 Gal #3115**  
**Park Avenue - 3 Gal #3113**

**B Pillar'd - 5 Gal #3125**  
**Pillar'd - 3 Gal #3123**

**C P2 - 5 Gal #3145**  
**P2 - 3 Gal #3143**

# EASTERN COFFEE URN

## Features

### PORTABLE

Bring your coffee anywhere it's needed

**PIPING HOT COFFEE FOR UP TO 7 HOURS**

**NO ELECTRICITY REQUIRED**

### ADJUSTABLE HEAT

The EcoBurner provides adjustable heat for coffee

**WINDPROOF**  
Suitable for indoors or outdoor use



The EcoBoost MINI is required for efficient heating of coffee urns



Powered by **EcoBurner**



”

*...the club has saved approximately 3,000 sternos from going into landfills since they started using EcoBurner less than a year ago. That's a really significant prevention of single-use items hitting our landfills.*

”

*... speeds up the setup and breakdown process and not only saves time but also reduces the risk of accidents as staff don't need to handle hot water on board our busy cruise ship.*



**MATTHEW DARNALL**

Director of Food & Beverage,  
St. Andrews Country Club, Florida



**CHEF JAY**

Lady Caroline,  
Cleveland, Ohio

CUSTOMER  
**Testimonials**

”

*DWTC decided to switch from wick fuel to EcoBurner to reduce cost and wastage and increase team and guest safety. Services are reliable and EcoBurner always go the extra mile to ensure that DWTC receives the best of services.*

”

*...since we started using EcoBurners instead of gel pots I feel it is a safer working environment for our staff and we are delighted with our contribution towards the reduction of carbon emissions.*



**VINCENT EGELS**

Director Hospitality Operations  
Dubai World Trade Centre



**KAROLINA BANSKA**

Food & Beverage Manager, Crowne Plaza, Dublin Airport

## CASE STUDY

# FLIK Hospitality Group EcoBurner trial



FLIK Hospitality Group, a part of Compass Group, is a leading corporate hospitality provider dedicated to providing great food through great service, all with wellness and sustainability at the heart of their operating philosophy.

## OBJECTIVE

The FLIK team were seeking a more consistent and sustainable system to heat their buffets as the single-use gel pots they were using often delivered inconsistent heat and were not suitable for outdoors. For their initial test, Chef William and Matthew Evans, Director of Food and Beverage, decided to switch from their single use gels & wicks to EcoBurner to cater for 250 people at an outdoor event.

## THE OUTDOOR EVENT

The 3-day event used 18 vessels for 3 hours per day.



### GEL POTS



### ECOBURNER

#### 81 gel pots required

(2 under each large vessel = 18 per day. 1 per small vessel = 9 per day)  
Total = 27 pots needed per day  
X 3 days = 81 gel pots

#### Fuel Cost = \$153.90

\$1.90 per 4-hour pot X 81 pots

81 pots containing toxic waste going to landfill

Inconsistent heat that staff needed to check as flame extinguishes easily outdoors

#### 18 EcoBurners required

(1 EcoBurner under every vessel burning for 3hrs. per day)  
54 hours EcoBurner fuel per day  
X 3days = 162 hrs. EcoBurner fuel

#### Fuel Cost = \$63.72

\$14.16 per 36-hour can

Zero fuel wasted and only 4.5 recyclable cans used

Consistent radiant heat that's windproof and adjustable so was reliable outdoors

As a result of the trial, FLIK found a reusable, sustainable solution that met their standards and ensured proper food safety and consistency throughout the entire event.

WATCH THE VIDEO



## AT A GLANCE

### CHALLENGES OF GELS

- Inconsistent heat
- Not suitable for outdoors
- Hugely wasteful & hard to dispose

### BENEFITS OF ECOBURNER

- Consistent, adjustable heat
- Refillable so ZERO WASTE
- More cost-effective
- Saved \$90.18 (59%) on fuel from 1 buffet event!

## CHEF WILLIAM PFEIFFER

Executive Chef & Beekeeper, FLIK Hospitality Group



*"With a traditional gel or wick, you get one single heat source that wants to heat whatever is directly above it, but with EcoBurner, you get an adjustable radiant heat with no burn spots"*

*"Overall the entire food and beverage team agrees we would like to move forward with using the EcoBurners as a replacement to wick sterno. We look forward to our transition from wick sterno and becoming a more sustainable property."*

# CUSTOMER Supports

## Support products available to customers

EcoBurner is the most sustainable method of portable heat for buffets but just like any equipment, it's important staff know how to use it correctly. The Filling Station is essential and all staff should be trained on correct use. Best practice for all venues is to use the EcoBurner Storage Rack to ensure safe and convenient storage of EcoBurners not in use. The SOP stickers should be displayed near the EcoBurner storage area as it promotes best practices for all staff.



### FILLING STATION #EB19502



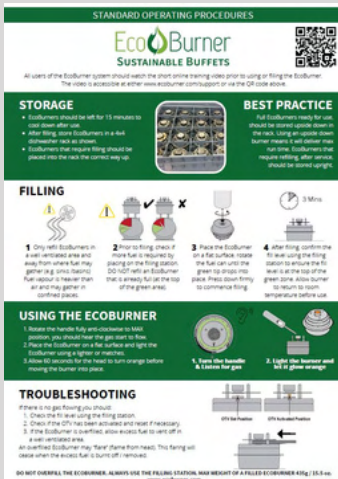
A filling station is provided FREE of CHARGE to every venue that uses EcoBurners. It is essential that staff use the filling station to measure how much fuel is contained in each EcoBurner. The fuel level should be checked before and after filling each EcoBurner.



### ECOBURNER STORAGE RACK #EB15337



The EcoBurner Storage Rack should be used to securely store the EcoBurners when they're not in use. Staff can follow the laser-marked instructions on the steel plate for the correct storage procedure. Each rack holds 8 EcoBurners and can be stacked, allowing for efficient and organised storage.



### STANDARD OPERATING PROCEDURES SOP STICKERS #EB19962



Standard Operating Procedures (SOP) are available FREE of CHARGE as large printed stickers that should be displayed near the EcoBurner storage area. This ensures that staff have easy access to clear instructions on the best practices for filling, storing, and using the EcoBurners.

# CONTINUED Online Support

Staff in hospitality constantly change over so we offer continued support and training for all users whenever it's needed. Users can easily access comprehensive support online, ensuring continuous safe use of EcoBurner through accessible resources and assistance.

In the event of an issue, simply follow our 3-step process to diagnose the problem and resume using EcoBurner smoothly.



## STEP 1

Watch the  
Instruction Video



## STEP 2

Go through  
TROUBLESHOOTING if your  
EcoBurner is not working.



Has your EcoBurner  
stopped working?



⌚ Takes X minutes

**Start Troubleshooting**



## STEP 3

Talk to an EcoBurner  
expert for further  
support and training.



Member of

**WORLD ALLIANCE**  
*for* EFFICIENT SOLUTIONS

by **SOLARIMPULSE**  
FOUNDATION

EcoBurner has been awarded the “Solar Impulse Efficient Solution” Label, a proof of high standards in profitability and sustainability.

Solar impulse identified 1000+ clean and profitable solutions to address environmental issues without compromising on economic growth and EcoBurner is one of them! This is thanks to the WATER and CARBON savings achieved by using the EcoBurner system instead of gel and wicks.

To receive the “Solar Impulse Efficient Solution” Label, EcoBurner was thoroughly assessed by a pool of independent experts according to 5 criteria covering the three main topics of Feasibility, Environmental and Profitability. All labelled solutions are part of the #1000solutions portfolio that are presented to decision-makers in business and government by Bertrand Piccard, Chairman of the Solar Impulse Foundation. The aim of this initiative is to encourage the adoption of more ambitious environmental targets and fast-track the implementation of these solutions on a large scale.



**Economical growth will only come from solutions that can save energy and protect the environment. It is possible today to bridge ecology and economy.”**

— **Bertrand PICCARD**  
Chairman of the  
48 Solar Impulse Foundation





**WE ARE  
PART OF  
THE 1000  
SOLUTIONS  
TO CHANGE  
THE  
WORLD**

#1000solutions

Product Category	Product Name	Product Code
EcoBurner	EcoBurner - English, French, Spanish, German	EB18999
	EcoBoost MINI X 20 units	EB11139
	EcoBurner Fuel - 6 cans	EB19009
	Filling Station	EB19502
	EcoBurner Storage Rack	EB15337
	Standard Operating Procedures (SOP) wall sticker	EB19962
EcoRock WATERLESS Chafer	EcoRock WATERLESS Chafer - 8QT Rectangle	EB15375G
	EcoRock WATERLESS Chafer - 6QT Square	EB15374G
	EcoRock WATERLESS Chafer - 6QT Round	EB15378G
EcoRock WATERLESS Chafer Accessories	Pearl Black Neofusion Porcelain Dish - Classic GN 2/3	EB15406
	White Porcelain Dish - Classic GN 2/3	EB15405
	Pearl Black Neofusion - Porcelain Dish - Classic Round	EB15407
	White porcelain dish - Classic Round	EB15404
EcoServe GN	EcoServe GN - Polished Stainless Steel	EB15316
	EcoServe GN - Brushed - Stainless Steel	EB15314
	EcoServe GN - Powder-coated - Black	EB15320
	EcoServe GN - Powder-coated - White	EB15313
	EcoServe GN - Gold PVD	EB15317
	EcoServe GN - Copper PVD	EB15318
EcoServe GN Accessories	Toughened Glass Lid - EcoServe GN (Hinge & Fittings included)	EB15311
	2.6" Deep Porcelain Dish - Gastronorm 1/1	EB15400
	Deep Porcelain Dish - Pearl - Black Neofusion - GN 1/1	EB15402
	0.8" Shallow Porcelain Dish - Gastronorm 1/1 X 2 Units	EB15209
	Divided Porcelain Dish - Gastronorm 1/1	EB15401
	Single-serve dish - small (12 per EcoServe GN)	EB15324
	Single-serve dish - large (6 per EcoServe GN)	EB15325
	Single-serve dish - square (8 per EcoServe GN)	EB15326
	Lid for single-serve dish - small (12 per EcoServe GN)	EB15327
	Lid for single-serve dish - large (6 per EcoServe GN)	EB15328
	Lid for single-serve dish - square (8 per EcoServe GN)	EB15329
EcoServe GN Cool Pack	EB15322	
EcoBurner Accessory	EcoBurner USB Lighter	EB15307

Colour	Quantity	Unit Length (inch)	Unit Width (inch)	Unit Height (inch)	Unit Weight (Lbs)
n/a	1	4.21	4.21	2.99	0.76
n/a	20	4.13	4.13	0.79	0.08
n/a	6	2.56	2.56	13.78	1.35
n/a	1	7.48	4.53	8.66	2.82
Green	1	20.08	9.96	3.94	3.34
n/a	1	16.54	11.70	0.01	0.01
Polished Stainless Steel	1	26.38	18.31	11.81	32.12
Polished Stainless Steel	1	19.09	18.31	11.81	25.96
Polished Stainless Steel	1	21.06	17.52	11.81	25.19
Pearl Black	1	13.98	12.99	2.95	0.00
White	1	13.98	12.99	2.95	0.00
Pearl Black	1	15.35	15.35	2.56	0.00
White	1	15.35	15.35	2.56	0.00
Polished Stainless Steel	1	20.04	11.97	6.30	11.55
Brushed Stainless Steel	1	20.04	11.97	6.30	11.55
Black	1	20.04	11.97	6.30	11.55
White	1	20.04	11.97	6.30	11.55
Gold PVD	1	20.04	11.97	6.30	11.55
Copper PVD	1	20.04	11.97	6.30	11.55
n/a	1	22.05	16.30	5.71	7.88
White	1	20.87	12.80	2.95	9.76
Pearl Black Neofusion	1	20.87	12.80	2.95	8.71
White	1	20.87	12.80	1.18	4.40
White	1	20.87	12.80	2.56	9.35
White	1	4.80	3.50	1.57	0.51
White	1	6.46	4.61	0.98	0.74
White	1	4.57	4.57	1.57	0.58
Transparent Blue	1	5.16	3.90	1.34	0.14
Transparent Blue	1	6.85	5.04	2.20	0.22
Transparent Blue	1	4.92	4.92	1.34	0.18
White	1	20.98	12.87	1.30	11.00
n/a	1	10	1.18	0.79	0.64



Product Category	Product Name	Product Code
EcoServe Round	EcoServe Round - Brushed Stainless Steel - Large	EB15009
	EcoServe Round - Polished Stainless Steel - Large	EB15015
	EcoServe Round - Black - Large	EB15005
	EcoServe Round - White - Large	EB15007
	EcoServe Round - Gold PVD - Large	EB15014
	EcoServe Round - Copper PVD - Large	EB15012
	EcoServe Round - Brushed Stainless Steel - Small	EB15008
	EcoServe Round - Polished Stainless Steel - Small	EB15016
	EcoServe Round - Black - Small	EB15004
	EcoServe Round - White - Small	EB15006
	EcoServe Round - Gold PVD - Small	EB15013
	EcoServe Round - Copper PVD - Small	EB15011
EcoServe Round Accessories	Premium Non-Stick Aluminium Round Dish- Large - Arctic Grey	EB15210
	Premium Non-Stick Aluminium Round Dish- Large - Black Moonscape	EB15218
	Glass Lid - Large x 1 (Handle attached)	EB15302
	Glass Lid - Large x 10 (Handles enclosed)	EB15304
	Premium Non-Stick Aluminium Round Dish - Small - Arctic Grey	EB15211
	Premium Non-Stick Aluminium Round Dish- Small - Black Moonscape	EB15219
	Glass Lid - Small x 1 (Handle attached)	EB15301
	Glass Lid - Small x 10 (Handles enclosed)	EB15303
	Pot Lid Spoon Rack	EB15300
	EcoServe Round Cool Pack - Large	EB15305
EcoPan	Waterless EcoPan - GN	EB15330
EcoTile	Single round warming tile	EB1804GB
	Double round warming tile	EB11803GB
	GN warming tile	EB1807GB
Waterless 5-Star RollTop Chafers	Pillar'd Waterless rolltop Chafer	EE3124
	P2 Waterless rolltop	EE3144
	Park Avenue Waterless rolltop Chafer	EE3114
	Queen Ann Waterless rolltop Chafer	EE3114QA
Coffee Urns	5-star jazz rock collection - 5 Gallon	3285
	5-star jazz rock collection - 3 Gallon	3283
	4-star ballerina collection - 5 Gallon	3135
	4-star ballerina collection - 3 Gallon	3133
	4-star ballerina collection - 1.5 Gallon	3131
	4-star Park Avenue - 5 Gal	3115
	4-star Park Avenue - 3 Gal	3113
	4-star Pillar'd - 5 Gal	3125
	4-star Pillar'd - 3 Gal	3123
	4-star P2 - 5 Gal	3145
4-star P2 - 3 Gal	3143	

Colour	Quantity	Unit Length (inch)	Unit Width (inch)	Unit Height (inch)	Unit Weight (Lbs)
Brushed Stainless Steel	1	14.37	14.37	7.87	8.03
Polished Stainless Steel	1	14.37	14.37	7.87	8.03
Black	1	14.37	14.37	7.87	8.03
White	1	14.37	14.37	7.87	8.03
Gold PVD	1	14.37	14.37	7.87	8.03
Copper PVD	1	14.37	14.37	7.87	8.03
Brushed Stainless Steel	1	11.89	11.89	6.50	5.28
Polished Stainless Steel	1	11.89	11.89	6.50	5.28
Black	1	11.89	11.89	6.50	5.28
White	1	11.89	11.89	6.50	5.28
Gold PVD	1	11.89	11.89	6.50	5.28
Copper PVD	1	11.89	11.89	6.50	5.28
Arctic Grey	1	13.54	13.54	2.76	4.95
Black	1	13.54	13.54	2.76	4.95
n/a	1	13.78	13.78	2.76	2.98
n/a	10	13.78	13.78	2.76	2.98
Arctic Grey	1	11.54	11.54	3.15	4.35
Black	1	11.54	11.54	3.15	4.35
n/a	1	11.61	11.61	2.76	2.28
n/a	10	11.61	11.61	2.76	2.28
Stainless Steel	1	7.48	6.30	8.27	0.65
White	1	10.55	10.55	1.57	3.47
Stainless Steel	5	21.85	13.86	5.00	6.05
various	1	31	22.25	1	20
various	1	31	22.25	1	25
various	1	31	22.25	1	35
Stainless Steel	1	8QT rectangle chafer - 40lbs			
Stainless Steel	1	8QT rectangle chafer - 40lbs			
Stainless Steel	1	8QT rectangle chafer - 40lbs			
Stainless Steel	1	8QT rectangle chafer - 40lbs			
Stainless Steel	1	5 Gallon coffe urn - 35lbs			
Stainless Steel	1	3 Gallon coffe urn - 30lbs			
Stainless Steel	1	5 Gallon coffe urn - 35lbs			
Stainless Steel	1	3 Gallon coffe urn - 30lbs			
Stainless Steel	1	1.5 Gallon coffe urn - 25lbs			
Stainless Steel	1	5 Gallon coffe urn - 35lbs			
Stainless Steel	1	3 Gallon coffe urn - 30lbs			
Stainless Steel	1	5 Gallon coffe urn - 35lbs			
Stainless Steel	1	3 Gallon coffe urn - 30lbs			
Stainless Steel	1	5 Gallon coffe urn - 35lbs			
Stainless Steel	1	3 Gallon coffe urn - 30lbs			

<b>Product Code</b>	<b>EcoServe Combinations</b>
EB15611	1x White WATERLESS EcoServe GN base, 1x Reinforced Glass Lid and 1x 2.6" Deep Porcelain Dish - 8QT rectangle - white
EB15612	1x Black WATERLESS EcoServe GN base, 1x Reinforced Glass Lid and 1x 2.6" Deep Porcelain Dish - 8QT rectangle - white
EB15713	1x Polished Stainless Steel WATERLESS EcoServe GN base, 1x Reinforced Glass Lid and 1x 2.6" Deep Porcelain Dish - 8QT rectangle - white
EB15614	1x Brushed Stainless Steel WATERLESS EcoServe GN base, 1x Reinforced Glass Lid and 1x 2.6" Deep Porcelain Dish - 8QT rectangle - white
EB15615	1x Gold PVD WATERLESS EcoServe GN base, 1x Reinforced Glass Lid and 1x 2.6" Deep Porcelain Dish - 8QT rectangle - white
EB15616	1x Copper PVD WATERLESS EcoServe GN base, 1x Reinforced Glass Lid and 1x 2.6" Deep Porcelain Dish - 8QT rectangle - white
EB15621	1x White WATERLESS EcoServe GN base, 1x Reinforced Glass Lid and 1x Divided Dish with two parts, large side has a capacity of 145 fl oz., smaller side is 59 fl oz
EB15622	1x Black WATERLESS EcoServe GN base, 1x Reinforced Glass Lid and 1x Divided Dish with two parts, large side has a capacity of 145 fl oz., smaller side is 59 fl oz
EB15723	1x Polished Stainless Steel WATERLESS EcoServe GN base, 1x Reinforced Glass Lid and 1x Divided Dish with two parts, large side has a capacity of 145 fl oz., smaller side is 59 fl oz
EB15624	1x Brushed Stainless Steel WATERLESS EcoServe GN base, 1x Reinforced Glass Lid and 1x Divided Dish with two parts, large side has a capacity of 145 fl oz., smaller side is 59 fl oz
EB15625	1x Gold PVD WATERLESS EcoServe GN base, 1x Reinforced Glass Lid and 1x Divided Dish with two parts, large side has capacity of 145 fl oz., smaller side is 59 fl oz
EB15626	1x Copper PVD WATERLESS EcoServe GN base, 1x Reinforced Glass Lid and 1x Divided Dish with two parts, large side has a capacity of 145 fl oz., smaller side is 59 fl oz
EB15631	1x White WATERLESS EcoServe GN base, 1x Reinforced Glass Lid and 1x Shallow Porcelain Dish - rectangle, white
EB15632	1x Black WATERLESS EcoServe GN base, 1x Reinforced Glass Lid and 1x Shallow Porcelain Dish - rectangle, white
EB15733	1x Polished Stainless Steel WATERLESS EcoServe GN base, 1x Reinforced Glass Lid and 1x Shallow Porcelain Dish - rectangle, white
EB15634	1x Brushed Stainless Steel WATERLESS EcoServe GN base, 1x Reinforced Glass Lid and 1x Shallow Porcelain Dish, rectangle, white
EB15635	1x Gold PVD WATERLESS EcoServe GN base, 1x Reinforced Glass Lid and 1x Shallow Porcelain Dish - rectangle, white
EB15636	1x Copper PVD WATERLESS EcoServe GN base, 1x Reinforced Glass Lid and 1x Shallow Porcelain Dish - rectangle, white
EB15641	1x White WATERLESS EcoServe GN base, 1x Reinforced Glass Lid and 1x Premium Aluminium Dish - Black - 8QT rectangle
EB15642	1x Black WATERLESS EcoServe GN base, 1x Reinforced Glass Lid and 1x Premium Aluminium Dish - Black - 8QT rectangle
EB15743	1x Polished Stainless Steel WATERLESS EcoServe GN base, 1x Reinforced Glass Lid and 1x Premium Aluminium Dish - Black - 8QT rectangle
EB15644	1x Brushed Stainless Steel WATERLESS EcoServe GN base, 1x Reinforced Glass Lid and 1x Premium Aluminium Dish - Black - 8QT rectangle
EB15645	1x Gold PVD WATERLESS EcoServe GN base, 1x Reinforced Glass Lid and 1x Premium Aluminium Dish - Black - 8QT rectangle
EB15646	1x Copper PVD WATERLESS EcoServe GN base, 1x Reinforced Glass Lid and 1x Premium Aluminium Dish - Black - 8QT rectangle
EB15651	1x White WATERLESS EcoServe GN base, 1 Reinforced Glass Lid, 1x GN Cool Pack, and 1x 2.6" Deep Porcelain Dish - 8QT rectangle - white
EB15652	1x Black WATERLESS EcoServe GN base, 1x Reinforced Glass Lid, 1x GN Cool Pack, and 1x 2.6" Deep Porcelain Dish - 8QT rectangle - white

Product Code	EcoServe Combinations
EB15653	1x Polished Stainless Steel WATERLESS EcoServe GN base, 1x Reinforced Glass Lid, 1x GN Cool Pack, and 1x 2.6" Deep Porcelain Dish -8QT rectangle - white
EB15654	1x Brushed Stainless Steel WATERLESS EcoServe GN base, 1x Reinforced Glass Lid, 1x GN Cool Pack, and 1x 2.6" Deep Porcelain Dish -8QT rectangle - white
EB15655	1x Gold PVD WATERLESS EcoServe GN base, 1x Reinforced Glass Lid, 1x GN Cool Pack, and 1x 2.6" Deep Porcelain Dish - 8QT rectangle - white
EB15656	1x Copper PVD WATERLESS EcoServe GN base, 1x Reinforced Glass Lid, 1x GN Cool Pack, and 1x 2.6" Deep Porcelain Dish - 8QT rectangle - white
EB15661	1x White WATERLESS EcoServe GN base, 1x Reinforced Glass Lid, 1x GN Cool Pack, and 1x Divided Dish with two parts, large side has a capacity of 145 fl oz., smaller side is 59 fl oz
EB15662	1x Black WATERLESS EcoServe GN base, 1x Reinforced Glass Lid, 1x GN Cool Pack, and 1x Divided Dish with two parts, large side has a capacity of 145 fl oz., smaller side is 59 fl oz
EB15663	1x Polished Stainless Steel WATERLESS EcoServe GN base, 1x Reinforced Glass Lid, 1x GN Cool Pack, and 1x Divided Dish with two parts, large side has a capacity of 145 fl oz., smaller side is 59 fl oz
EB15664	1x Brushed Stainless Steel WATERLESS EcoServe GN base, 1x Reinforced Glass Lid, 1x GN Cool Pack, and 1x Divided Dish with two parts, large side has a capacity of 145 fl oz., smaller side is 59 fl oz
EB15665	1x Gold PVD WATERLESS EcoServe GN base, 1x Reinforced Glass Lid, 1x GN Cool Pack, and 1x Divided Dish with two parts, large side has a capacity of 145 fl oz., smaller side is 59 fl oz
EB15666	1x Copper PVD WATERLESS EcoServe GN base, 1x Reinforced Glass Lid, 1x GN Cool Pack, and 1x Divided Dish with two parts, large side has a capacity of 145 fl oz., smaller side is 59 fl oz
EB15671	1x White WATERLESS EcoServe GN base, 1x Reinforced Glass Lid, 1x GN Cool Pack, and 1x Shallow Porcelain Dish - rectangle white
EB15672	1x Black WATERLESS EcoServe GN base, 1x Reinforced Glass Lid, 1x GN Cool Pack, and 1x Shallow Porcelain Dish - rectangle - white
EB15673	1x Polished Stainless Steel WATERLESS EcoServe GN base, 1x Reinforced Glass Lid, 1x GN Cool Pack, and 1x Shallow Porcelain Dish - rectangle - white
EB15674	1x Brushed Stainless Steel WATERLESS EcoServe GN base, 1x Reinforced Glass Lid, 1x GN Cool Pack, and 1x Shallow Porcelain Dish - rectangle - white
EB15675	1x Gold PVD WATERLESS EcoServe GN base, 1x Reinforced Glass Lid, 1x GN Cool Pack, and 1x Shallow Porcelain Dish - rectangle - white
EB15676	1x Copper PVD WATERLESS EcoServe GN base, 1x Reinforced Glass Lid, 1x GN Cool Pack, and 1x Shallow Porcelain Dish - rectangle - white,
EB15681	1x White WATERLESS EcoServe GN base, 1x Reinforced Glass Lid, 1x GN Cool Pack, and 1x Premium Aluminium Dish - Black - 8QT rectangle
EB15682	1x Black WATERLESS EcoServe GN base, 1x Reinforced Glass Lid, 1x GN Cool Pack, and 1x Premium Aluminium Dish - Black - 8QT rectangle
EB15683	1x Polished Stainless Steel WATERLESS EcoServe GN base, 1x Reinforced Glass Lid, 1x GN Cool Pack, and 1x Premium Aluminium Dish- Black - 8QT rectangle
EB15684	1x Brushed Stainless Steel WATERLESS EcoServe GN base, 1x Reinforced Glass Lid, 1x GN Cool Pack, and 1x Premium Aluminium Dish - Black - 8QT rectangle
EB15685	1x Gold PVD WATERLESS EcoServe GN base, 1x Reinforced Glass Lid, 1x GN Cool Pack, and 1x Premium Aluminium Dish - Black - 8QT rectangle
EB15686	1x Copper PVD WATERLESS EcoServe GN base, 1x Reinforced Glass Lid, 1x GN Cool Pack, and 1x Premium Aluminium Dish - Black - 8QT rectangle
EB15721	1x White WATERLESS EcoServe - Round - Large 15"W x 14-1/5"D x 9-4/5"H, 1x Large Glass Lid, 1x Premium Aluminium Round Dish- 5.5QT Large - Black Moonscape
EB15722	1x Black WATERLESS EcoServe - Round - Large 15"W x 14-1/5"D x 9-4/5"H, 1x Large Glass Lid, 1x Premium Aluminium Round Dish - 5.5QT Large - Black Moonscape
EB15723	1x Polished Stainless Steel WATERLESS EcoServe - Round - Large 15"W x 14-1/5"D x 9-4/5"H, 1x Large Glass Lid, 1x Aluminium Round Dish- 5.5QT Large - Black Moonscape
EB15724	1x Brushed Stainless Steel WATERLESS EcoServe - Round - Large 15"W x 14-1/5"D x 9-4/5"H, 1x Large Glass Lid, 1x Aluminium Round Dish- 5.5QT Large - Black Moonscape

Product Code	EcoServe Combinations
EB15725	1x Gold PVD WATERLESS EcoServe - Round - Large 15"W x 14-1/5"D x 9-4/5"H, 1x Large Glass Lid, 1 x Aluminium Round Dish - 5.5QT Large -Black Moonscape
EB15726	1x Copper PVD WATERLESS EcoServe -Round - Large 15"W x 14-1/5"D x 9-4/5"H, 1x Large Glass Lid, 1 x Aluminium Round Dish - 5.5QT Large - Black Moonscape
EB15731	1x White WATERLESS EcoServe - Round - Large 15"W x 14-1/5"D x 9-4/5"H, 1x Large Glass Lid, 1 x Premium Aluminium Round Dish - 5.5QT Large - Arctic Grey
EB15732	1x Black WATERLESS EcoServe - Round - Large 15"W x 14-1/5"D x 9-4/5"H, 1x Large Glass Lid, 1 x Premium Aluminium Round Dish - 5.5QT Large - Arctic Grey
EB15733	1x Polished Stainless Steel WATERLESS EcoServe - Round - Large 15"W x 14-1/5"D x 9-4/5"H, 1x Large Glass Lid, 1 x Premium Aluminium Round Dish - 5.5QT Large - Arctic Grey
EB15734	1x Brushed Stainless Steel WATERLESS EcoServe - Round - Large 15"W x 14-1/5"D x 9-4/5"H, 1x Large Glass Lid, 1 x Aluminium Round Dish - 5.5QT Large - Arctic Grey
EB15735	1x Gold PVD WATERLESS EcoServe - Round - Large 15"W x 14-1/5"D x 9-4/5"H, 1x Large Glass Lid, 1 x Premium Aluminium Round Dish - 5.5QT Large - Arctic Grey
EB15736	1x Copper PVD WATERLESS EcoServe -Round - Large 15"W x 14-1/5"D x 9-4/5"H, 1x Large Glass Lid, 1 x Premium Aluminium Round Dish - 5.5QT Large - Arctic Grey
EB15751	1x White WATERLESS EcoServe - Round - Large 15"W x 14-1/5"D x 9-4/5"H, 1x Large Glass Lid, 1x Round Large Cool Pack, 1x Premium Aluminium Round Dish - 5.5QT Large - Black Moonscape
EB15752	1x Black WATERLESS EcoServe - Round - Large 15"W x 14-1/5"D x 9-4/5"H, 1x Large Glass Lid, 1x Round Large Cool Pack, 1 x Premium Aluminium Round Dish - 5.5QT Large - Black Moonscape
EB15753	1x Polished Stainless Steel WATERLESS EcoServe - Round - Large 15"W x 14-1/5"D x 9-4/5"H, 1x Large Glass Lid, 1x Round Large Cool Pack, 1 xPremium Aluminium Round Dish - 5.5QT Lrg - Black Moonscape
EB15754	1x Brushed Stainless Steel WATERLESS EcoServe - Round - Large 15"W x 14-1/5"D x 9-4/5"H, 1x Large Glass Lid, 1x Round Large Cool Pack, 1xPremium Aluminium Round Dish - 5.5QT Lrg - Black Moonscape
EB15755	1x Gold PVD WATERLESS EcoServe - Round -Large 15"W x 14-1/5"D x 9-4/5"H, 1x Large Glass Lid, 1x Round Large Cool Pack, 1x Premium Aluminium Round Dish - 5.5QT Large - Black Moonscape
EB15756	1x Copper PVD WATERLESS EcoServe Round - Large 15"W x 14-1/5"D x 9-4/5"H, 1x Large Glass Lid, 1x Round Large Cool Pack, 1x Premium Aluminium Round Dish - 5.5QT Large - Black Moonscape
EB15761	1x White WATERLESS EcoServe - Round - Large15"W x 14-1/5"D x 9-4/5"H, 1x Large Glass Lid, 1x Round LargeCool Pack, 1x Premium Aluminium Round Dish - 5.5QT Large - Arctic Grey
EB15762	1x Black WATERLESS EcoServe - Round - Large 15"W x 14-1/5"D x 9-4/5"H, 1x Large Glass Lid, 1x Round Large Cool Pack, 1x Premium Aluminium Round Dish - 5.5QT Large - Arctic Grey
EB15763	1x Polished Stainless Steel WATERLESS EcoServe - Round - Large 15"W x 14-1/5"D x 9-4/5"H, 1x Large Glass Lid, 1x Round Large Cool Pack, 1x Premium Aluminium Round Dish - 5.5QT Large - Arctic Grey
EB15764	1x Brushed Stainless Steel WATERLESS EcoServe - Round - Large 15"W x 14-1/5"D x 9-4/5"H, 1x Large Glass Lid, 1x Round Large Cool Pack, 1x Premium Aluminium Round Dish - 5.5QT Large - Arctic Grey
EB15765	1x Gold PVD WATERLESS EcoServe - Round -Large 15"W x 14-1/5"D x 9-4/5"H, 1x Large Glass Lid, 1x Round Large Cool Pack, 1x Premium Aluminium Round Dish - 5.5QT Large - Arctic Grey
EB15766	1x Copper PVD WATERLESS EcoServe - Round - Large 15"W x 14-1/5"D x 9-4/5"H, 1x Large Glass Lid, 1x Round Large Cool Pack, 1x Premium Aluminium Round Dish - 5.5QT Large - Arctic Grey
EB15821	1x White WATERLESS EcoServe - Round - Small 12-1/5"W x 11-4/5"D x 8-3/5"H, 1x Small Glass Lid, 1 x Premium Aluminium Round Dish - 4.7QT Small - Black Moonscape
EB15822	1x Black WATERLESS EcoServe - Round - Small 12-1/5"W x 11-4/5"D x 8-3/5"H, 1x Small Glass Lid, 1 x PremiumAluminium Round Dish - 4.7QT Small - Black Moonscape
EB15823	1x Polished Stainless Steel WATERLESS EcoServe - Round - Small 12-1/5"W x 11-4/5"D x 8-3/5"H, 1x Small Glass Lid, 1 x Premium Aluminium Round Dish - 4.7QT Small - Black Moonscape
EB15824	1x Brushed Stainless Steel WATERLESS EcoServe - Round - Small 12-1/5"W x 11-4/5"D x 8-3/5"H, 1x Small Glass Lid, 1 x Premium Aluminium Round Dish - 4.7QT Small - Black Moonscape
EB15825	1x Gold PVD WATERLESS EcoServe - Round - Small 12-1/5"W x 11-4/5"D x 8-3/5"H, 1x Small Glass Lid, 1 x Premium Aluminium Round Dish - 4.7QT Small - Black Moonscape
EB15826	1x Copper PVD WATERLESS EcoServe - Round - Small 12-1/5"W x 11-4/5"D x 8-3/5"H, 1x Small Glass Lid, 1 x Premium Aluminium Round Dish - 4.7QT Small - Black Moonscape

Product Code	EcoServe Combinations
EB15831	1x White WATERLESS EcoServe - Round - Small 12-1/5"W x 11-4/5"D x 8-3/5"H, 1x Small Glass Lid, 1 x Premium Aluminium Round Dish - 4.7QT Small - Arctic Grey
EB15832	1x Black WATERLESS EcoServe - Round - Small 12-1/5"W x 11-4/5"D x 8-3/5"H, 1x Small Glass Lid, 1 x Premium Aluminium Round Dish - 4.7QT Small - Arctic Grey
EB15833	1x Polished Stainless Steel WATERLESS EcoServe - Round - Small 12-1/5"W x 11-4/5"D x 8-3/5"H, 1x Small Glass Lid, 1 x Aluminium Round Dish - 4.7QT Small - Arctic Grey
EB15834	1x Brushed Stainless Steel WATERLESS EcoServe - Round - Small 12-1/5"W x 11-4/5"D x 8-3/5"H, 1x Small Glass Lid, 1 x Premium Aluminium Round Dish - 4.7QT Small - Arctic Grey
EB15835	1x Gold PVD WATERLESS EcoServe - Round - Small 12-1/5"W x 11-4/5"D x 8-3/5"H, 1x Small Glass Lid, 1 x Premium Aluminium Round Dish - 4.7QT Small - Arctic Grey
EB15836	1x Copper PVD WATERLESS EcoServe - Round - Small 12-1/5"W x 11-4/5"D x 8-3/5"H, 1x Small Glass Lid, 1 x Premium Aluminium Round Dish - 4.7QT Small - Arctic Grey

**EXAMPLES OF**  
**EcoServe Combinations**



**Copper EcoServe GN, GN  
Reinforced Glass Lid, GN  
Cold Pack, Divided  
Porcelain Dish  
#EB15666**



**Brushed Stainless Steel  
EcoServe GN, GN  
Reinforced Glass Lid,  
Aluminium Black Dish  
#EB15644**



**White EcoServe Round  
Large\_Cold Pack\_arctic  
grey aluminium dish  
\_Glass Lid #EB15731**



**Gold PVD EcoServe Round  
Large\_black moonscape  
aluminium dish \_Glass Lid  
#EB15755**



**Black EcoServe Round  
Small\_black moonscape  
aluminium dish \_Glass Lid  
#EB15822**



Zilwa Attitude, Mauritius



# Powered by EcoBurner



ZERO WATER

ZERO WASTE

LESS CARBON



# EASTERN

Powered by EcoBurner

## CONNECT WITH US!



Telephone: 1-718-240-9595  
Toll Free: 1-888-422-4142



[sales@easterntabletop.com](mailto:sales@easterntabletop.com)



[www.us.ecoburner.com](http://www.us.ecoburner.com)



*Corporate Headquarters,  
Showroom & Warehouse:*

Eastern Tabletop Manufacturing  
Company Inc.  
50 Ingham Avenue,  
Bayonne NJ 07002.



# THE Q-BIK MOBILE BUFFET SYSTEM

WELCOME THE TRIO : SEAMLESSLY BLEND AND INTEGRATE

Q-BIK

THE  
HUB

ZOZZ  
MODULAR FLAT PACK



EASTERN  
TABLETOP



Corporate Headquarters, Showroom & Warehouse:  
Eastern Tabletop Manufacturing Company Inc.  
50 Ingham Avenue  
Bayonne NJ 07002

Telephone:  
1-718-240-9595

Toll Free:  
1-888-422-4142

Email:  
sales@easterntabletop.com

Visit [www.EasternTableTop.com](http://www.EasternTableTop.com) for full product details.

---

## THIS ISN'T JUST A BUFFET UPGRADE; IT'S AN INDUSTRY EYE-OPENER.

Get ready for a groundbreaking revelation in the industry – the sensational **Q-BIK!** Standing tall alongside the **THE HUB** and the **20ZZ**, it seamlessly integrates into our dynamic collapsible buffet family.

Envision the possibilities: interchangeable tiles effortlessly swapping between all three units, and stunning color panels creating a seamless blend with any decor.

### WE'RE PROUD TO INTRODUCE IO

- Integrating Operations
- Indoor and Outdoor
- Innovative Options

Brace yourself for a thrilling new era in buffet experience!

**Q-BIK CAPABILITIES ARE AS IMPRESSIVE  
AS THEY ARE EXTENSIVE.**

## INDOOR - OUTDOOR

The **Q-BIK** is the ultimate solution for both Indoor & Outdoor versatility

- Heavy-duty swivel casters, effortlessly glide from carpet to tile, seamless transitioning between indoor and outdoor spaces.
- Connecting adapter easily hooks onto Q-Bik stands, creating the perfect buffet setup for any event.



# FROM DISPLAY TO ACTION

The **Q-BIK** extends from a singular display to a full buffet in mere minutes

- A vast selection of panels to choose from
- Set up and collapse your buffet in any area



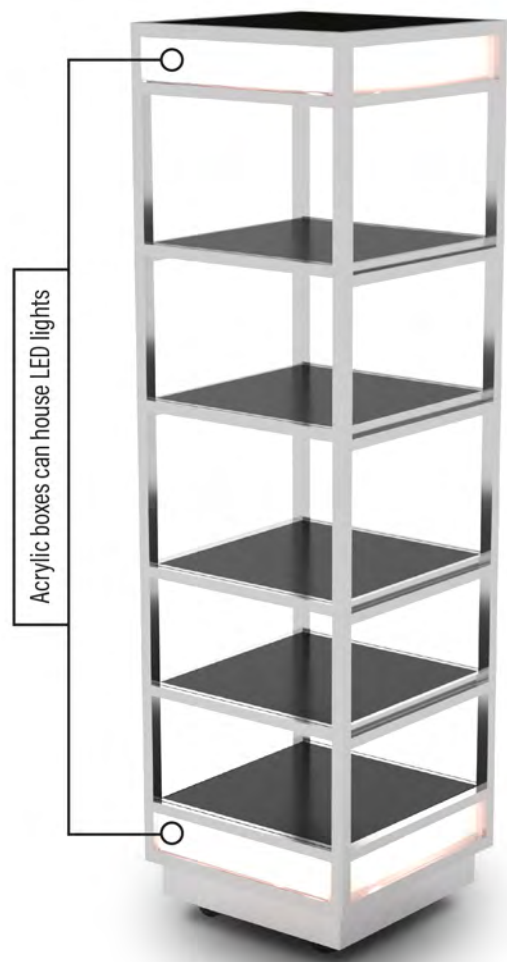
## RAISE THE BAR WITH EFFORTLESS ELEGANCE

Cheers to innovation, cheers to unforgettable moments! Our modular buffet table seamlessly transforms into a bar with a simple switch of panels and the addition of a bar top.

No hardware, no complicated installation - just pure sophistication at your fingertips with the **Q-BIK** display.

- Shelves hook onto multiple levels
- No hardware required





**Q-BIK**  
**5 TIER DISPLAY #ST1830G**  
22 1/4" x 22 1/4" x 80 3/8" H  
Glass Shelves #ST1830G  
Wooden Shelves #ST1830W  
◦ 18/10 Stainless Steel  
◦ Indoor/Outdoor Use

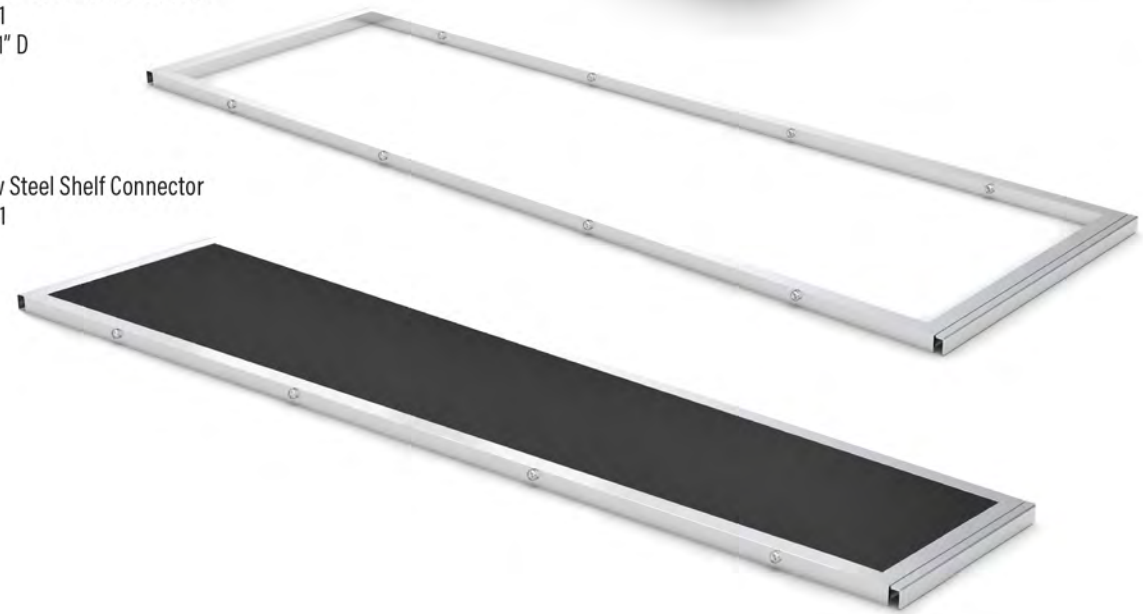


**Q-BIK**  
**4 TIER DISPLAY #ST1820G**  
22 1/4" x 22 1/4" x 69 3/8" H  
Glass Shelves #ST1820G  
Wooden Shelves #ST1820W  
◦ 18/10 Stainless Steel  
◦ Indoor/Outdoor Use

Heavy duty locking  
caster wheels

Stainless Steel Shelf Connector  
#ST1821  
63" x 21" D

Narrow Steel Shelf Connector  
#ST1831



**EMBRACE THE EASE OF MOBILITY AND ADAPTABILITY**

**Q-BIK** is your go-to choice for a flawless buffet experience,  
regardless of the venue!

# FROM DYNAMIC CONFIGURATIONS TO LIMITLESS CREATIVITY

Transform your space with ease and style.  
Your vision, your display - **Q-BIK** makes it possible!

○ U-SHAPED



○ L-SHAPED



○ X-SHAPED





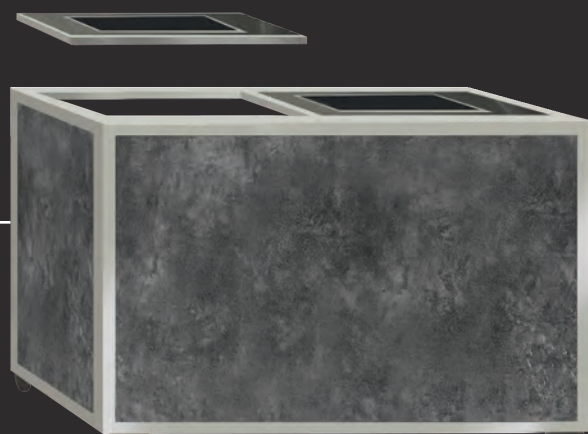
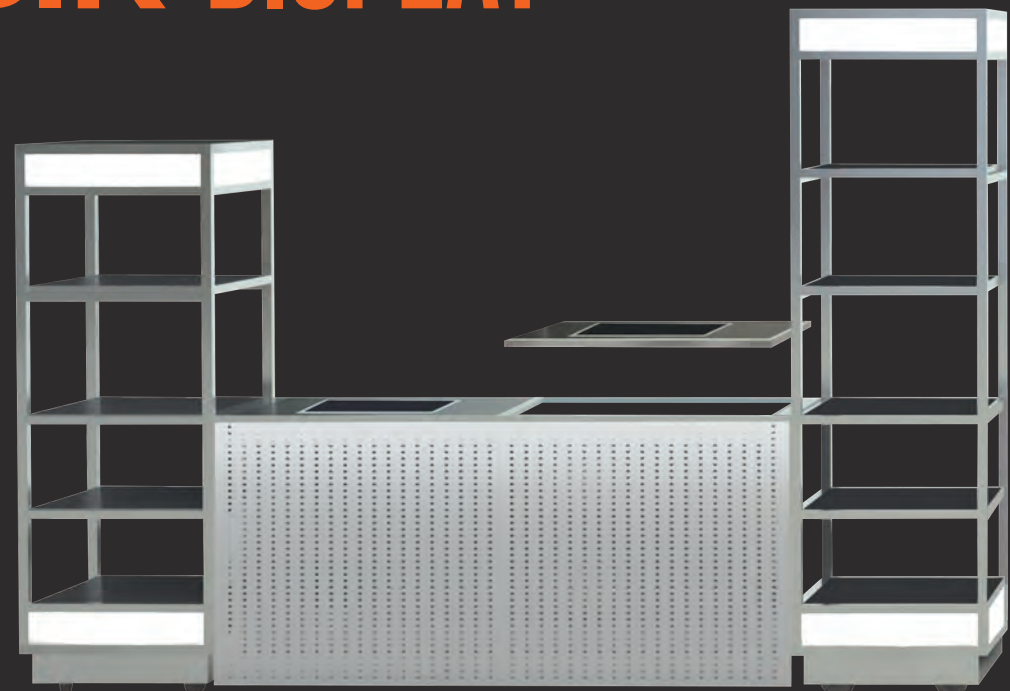


# SEAMLESS HARMONY, INFINITE VERSATILITY

Experience total integration with the **Q-BIK**, **THE HUB**, & **Z0ZZ**  
as you easily swap tiles and redefine possibilities.

- Tiles used for both the HUB and Z0ZZ tables, also fit into the Q-Bik connector.
- No hardware required

# Q-BIK DISPLAY



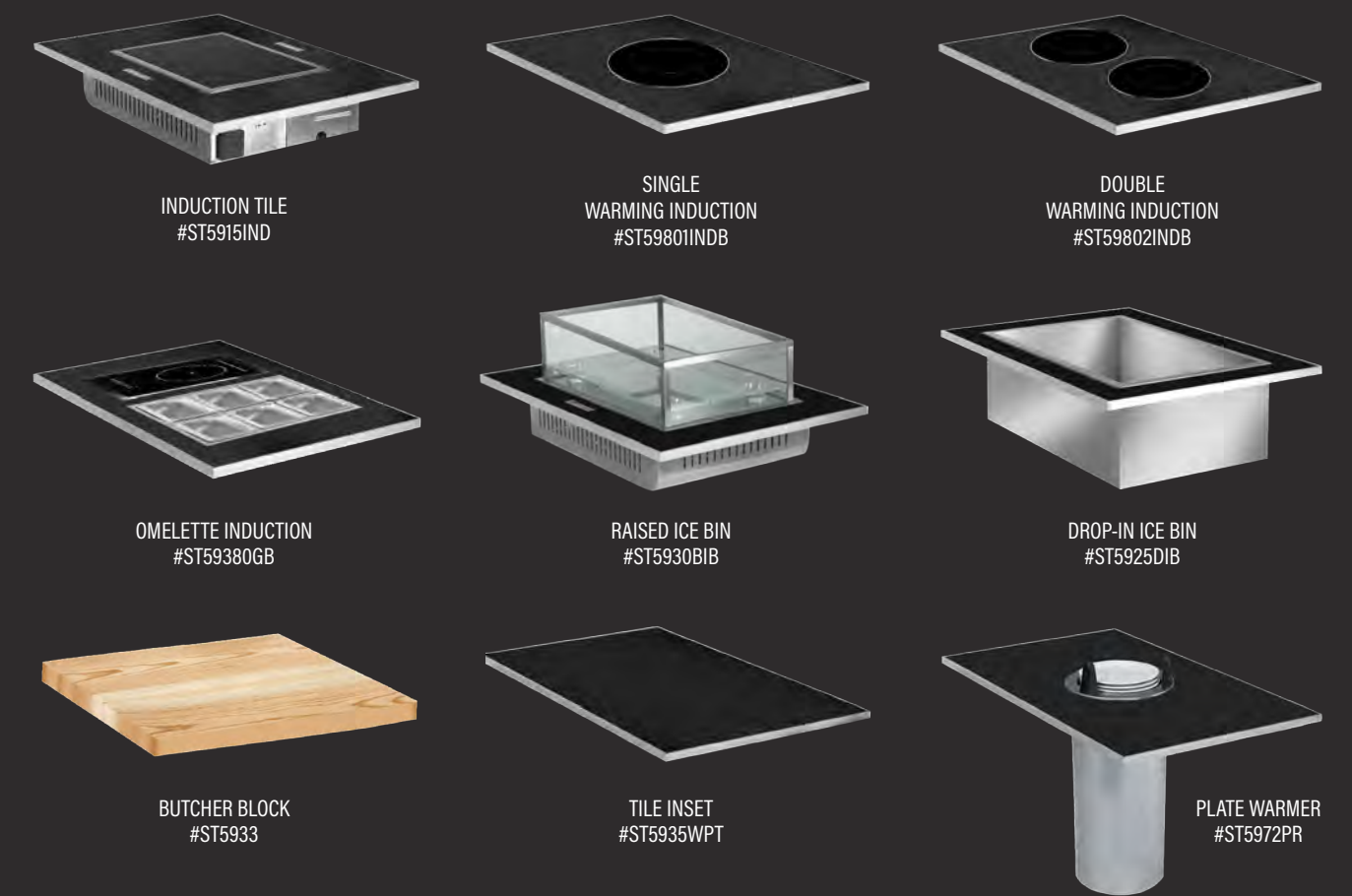
**2022**  
MODULAR FLAT PACK



**THE  
HUB**

## TILES

Complete selection of tiles available on EasternTabletop.com



INDUCTION TILE  
#ST5915IND

SINGLE  
WARMING INDUCTION  
#ST59801INDB

DOUBLE  
WARMING INDUCTION  
#ST59802INDB

OMELETTE INDUCTION  
#ST59380GB

RAISED ICE BIN  
#ST5930BIB

DROP-IN ICE BIN  
#ST5925DIB

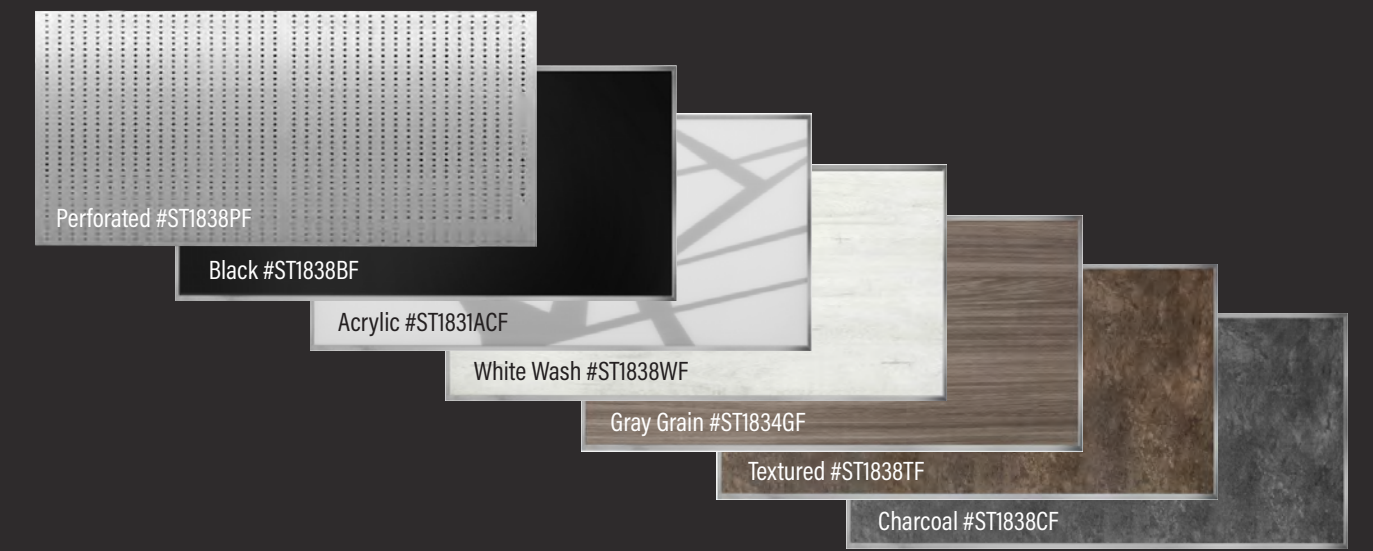
BUTCHER BLOCK  
#ST5933

TILE INSET  
#ST5935WPT

PLATE WARMER  
#ST5972PR

## FRONT PANELS

63" x 31 1/2" | Hooks onto Q-BIK stainless steel shelf connector



Perforated #ST1838PF

Black #ST1838BF

Acrylic #ST1831ACF

White Wash #ST1838WF

Gray Grain #ST1834GF

Textured #ST1838TF

Charcoal #ST1838CF

# EASTERN TABLETOP



**Corporate Headquarters, Showroom & Warehouse:**  
Eastern Tabletop Manufacturing Company Inc.  
50 Ingham Avenue  
Bayonne NJ 07002

**Telephone:**  
1-718-240-9595

**Toll Free:**  
1-888-422-4142

**Email:**  
[sales@easterntabletop.com](mailto:sales@easterntabletop.com)

Visit [www.EasternTableTop.com](http://www.EasternTableTop.com) for full product details.



# EASTERN

TABLETOP

**EASTERN**  
TABLETOP

**THE  
HUB**

**ZOZZ**  
MODULAR FLAT PACK

## THE ORIGINAL INDESTRUCTIBLE STAINLESS STEEL BUFFET SYSTEM



**WHITE WASH COLLECTION**



Watch live video  
for this product.

[www.easterntabletop.com](http://www.easterntabletop.com)  
1-888-422-4142

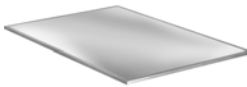
## QUICK & EASY ASSEMBLY

### COLLAPSIBLE BAR KIT

BAR KIT | FRAME | DROP-IN SINK | STAINLESS STEEL TILE | SPEED RAIL | BAR TOP | BOTTOM SHELF



DROP-IN SINK



STAINLESS STEEL TILE



SPEED RAIL



FRAME

FRONT VIEW



#HB6535W

BACK VIEW



1



Watch live video  
for this product.

[www.easterntabletop.com](http://www.easterntabletop.com)  
1-888-422-4142

**ADVANCEMENT • PERFORMANCE • RESOURCEFUL**



**ACTION BUFFET TABLE #HT4830W**  
*Hub Banquet Table, for indoor/outdoor use.*

**DIMENSION** 66-3/4"W 31-1/2"D x 32-3/4"H

**INCLUDES** (1) stainless steel table frame,  
(3) cooking/warming tiles, white wash, (1) set of side  
panels (1) bottom shelf.



**#HT4830WMB**

**DISPLAY TABLE #HT4850W**  
*Hub Banquet Table, for indoor/outdoor use.*

**DIMENSION** 66-3/4"W 31-1/2"D x 32-3/4"H

**INCLUDES** (1) stainless steel table frame,  
(3) reversible laminate tiles, white wash/Bamboo,  
(1) set of side panels (1) bottom shelf.



**THE  
HUB** CHOOSE  
YOUR  
FUNCTION



PLAIN TILES, ICE BINS & BUTCHER BLOCKS



**RAISED ICE BIN**  
#ST5930BIB



**DROP-IN ICE BIN**  
#ST5925DIB

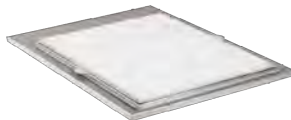


**COMPLETE ICE BIN**  
#ST5985RB



**WOODEN BUTCHER BLOCK**  
#ST5975WB

(With gravy lane and Underliner)



**CORIAN CARVING BOARD**  
#ST5920CB

(With gravy lane and Underliner)



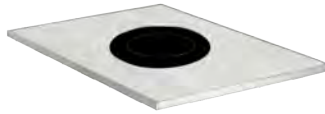
**BUTCHER BLOCK**  
#ST5933







**SQUARE INDUCTION**  
#ST5967WIND



**SINGLE ROUND INDUCTION**  
#ST59801WIND



**DOUBLE ROUND INDUCTION**  
#ST59802WIND



**GRIDDLE EXTENDED**  
#ST5982G



**HOT PLATE**  
#ST5970HT



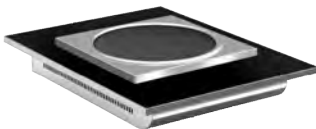
**OMELETTE STATION**  
#ST59380TG



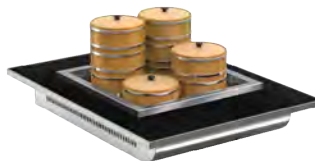
**OMELETTE STATION**  
#ST59380TB



**PLATE WARMER**  
#ST5972PR



**HOT POT**  
#ST5982HP



**DIMSUM**  
#ST5984HP



**EASTERN**  
TABLETOP

**THE  
HUB**

**ZOZZ**  
MODULAR FLAT PACK

## MODERN EYE CATCHING DESIGN



Watch live video  
for this product.

[www.easterntabletop.com](http://www.easterntabletop.com)  
1-888-422-4142

**EASTERN**  
TABLETOP

**OUT**  
*of the*  
**BOX**

---



# UNBOXING THE FUTURE OF BUFFETS

*From Box to Buffet in Minutes.*



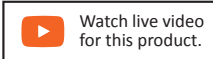
**Each buffet box is the size of a regular HUB tile**

- No hardware or tools needed
- Easily clicks into place



**Each box comes complete with:**

- Full back wall set up
- Two display shelves
- Two-compartment tray



# Think Outside the Box...

# & Serve from it.

**Out-of-the-Box | Gray Grain**

MODEL #ST5714G  
22 1/4" W x 31 1/2"D



**Out-of-the-Box | White Wash**

MODEL #ST5711W  
22 1/4" W x 31 1/2"D



**Out-of-the-Box | Charcoal**

MODEL #ST5717C  
22 1/4" W x 31 1/2"D




**Out-of-the-Box | Gray Washed**

MODEL #ST5700  
22 1/4" W x 31 1/2"D



**Display boxes fit the standard HUB Tables, as well as the the ALL NEW Curved HUB**

- Each box is reinforced by itself and clicks into place.
- You can use a single box or up to 3 boxes per HUB Table
- Choice of laminate colors

 Watch live video for this product.

**Canopy**  
MODEL #ST5702CC



**Chalkboard**  
MODEL #ST5703CB  
22 1/4" W x 31 1/2"D



**Donut/Bagel Hooks**  
MODEL #ST5701BH  
(Set of 8 pcs) 3/8" D x 7" L each



## Blackboard Buffet, Under a Canopy of Charm

*Additional accessories  
easily hook on.*

### CHOOSE YOUR ACCESSORIES:

- Chalkboard
- Canopy
- Donut Hooks



[Watch live video  
for this product.](#)

## Flexible Feasting Indoor or Outdoor



## Boxes Become a Masterpiece, a Buffet to Impress

The Ultimate Buffet makeover that gives light to endless buffet station options.

Create your perfect brunch set-up with bagel/donut hooks, trays & shelves. Add an omelet and beverage station to complete the ultimate spread.


[Watch live video for this product.](#)

## Turn your HUB into a Wall of Wonder, a Back Wall of Delight

Build on your investment. Backwall displays easily hook onto your existing HUB tables.

Combine our HUBs with Eastern Mobile buffets for a complete look and updated functions.

**Magic Happens!**  
A simple HUB table turns into a showstopper, one box at a time.

 Watch live video for this product.





# The Curve that Captivates

The Curve HUB now joins the original HUB table family, with flowing form and endless function.



**EASTERN**  
TABLETOP

## Elevating the Game, One Buffet at a Time.

**Corporate Headquarters, Showroom & Warehouse:**

Eastern Tabletop Manufacturing Company Inc.

50 Ingham Avenue

Bayonne NJ 07002

**Telephone:**

1-718-240-9595

**Toll Free:**

1-888-422-4142

**Email:**

[sales@easterntabletop.com](mailto:sales@easterntabletop.com)

Visit [www.EasternTableTop.com](http://www.EasternTableTop.com) for full product details.

EASTERN  
TABLETOP



# EASTERN TABLETOP

Innovating Buffet Solutions For Everyday Operations

**MOVE  
FORWARD**

**THINK  
BIG**

## VERSATILITY AT YOUR FINGERTIPS

When we set out to create the Ultimate Buffet Station, we looked at how we could improve the entire serving process from start to finish. With HUB & ZOZZ combined, Eastern delivers simple, yet powerful, buffet solutions that allow you to expand, reimagine and heighten your events in minutes. When you invest in Eastern products, you gain a partner that will never stop innovating for your hospitality business.

We design with you in mind.

Sol & Brenda

**THE  
HUB**



**FROM ONE BUFFET STATION TO A COMPLETE BUFFET SUITE**

**Plan Your Ultimate Buffet Here**

[BUFFET PLANNER](#)

# THE HUB

THE ORIGINAL JUST GOT BETTER



Watch live video  
for this product.

# THE HUB

Forward advancement of craftsmanship led to the supremacy of the HUB. When genius design gets coupled with quality you have a true winner. GET ROLLING.

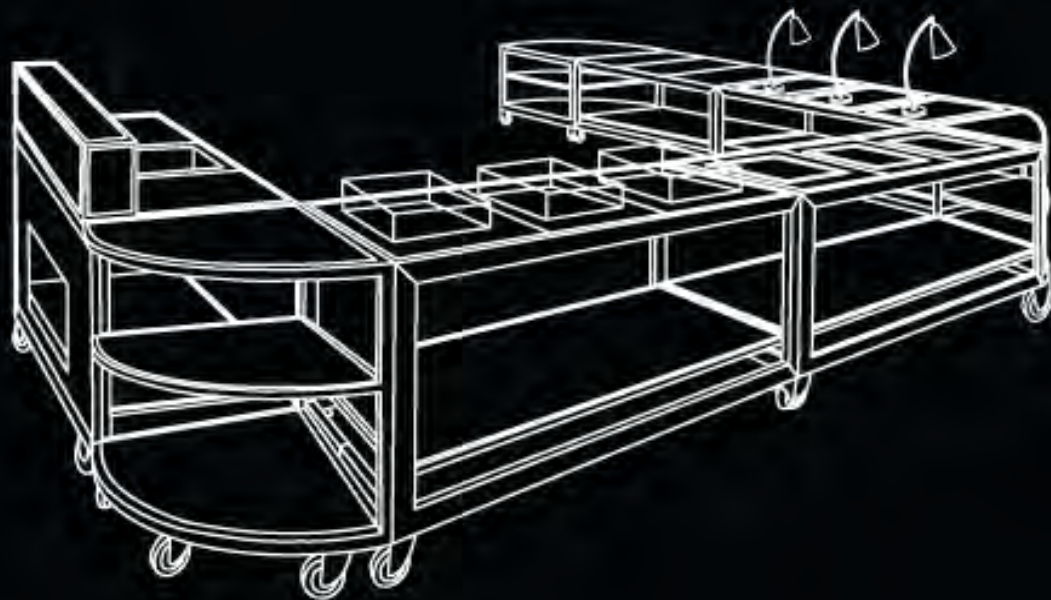


**EASTERN**  
TABLETOP

# THE HUB

# PERFORMANCE.

- FULLY COLLAPSIBLE,  
MOBILE BUFFET SYSTEM
- STURDY STAINLESS  
STEEL FRAME WITH  
REMOVABLE PANELS
- NEW COMPONENTS AVAILABLE





THE HUB TABLE FRAME

# THE HUB FULLY COLLAPSIBLE DESIGN



MODEL: 85 TUM30

- ONE PIECE CONSTRUCTION
- ZERO HARDWARE
- STAINLESS STEEL FRAME
- CHOICE OF COLOR FOR FRAME
- EASY TRANSPORT -  
HEAVY DUTY LOCKING CASTERS

THE HUB TABLE PANELS

# THE HUB QUICK & EASY ASSEMBLE

SCRATCH RESISTANT LAMINATE PANELS



- CHOICE OF PANELS
- 1/3 AND FULL FRONT LAMINATE IN VARIETY OF COLORS
- SIDE LAMINATE IN VARIETY OF COLORS
- WOVEN VINYL WRAP AROUND PANELS 40+ COLORS
- PERFORATED STAINLESS STEEL MESH CHOICE OF COLORS
- SELF-STICK SCREEN PRINTING ONTO PANELS. VARIETY OF STOCK OR CUSTOM IMAGES

THE HUB TABLE TILE

# THE HUB CHOOSE YOUR FUNCTION



- GRIDDLE
- ICE BINS
- CUTTING BOARD
- INDUCTION OPTIONS
- HOT PLATE
- OMELETTE STATION
- MANY MORE

## THE HUB TABLE BAR KIT

# THE HUB COLLAPSIBLE BAR DESIGN

### BAR COMBOS

- FRAMES INCLUDED
- STAINLESS STEEL TILES
- CHOICE OF PANELS
- COORDINATING BAR TOP PANELS
- SPEED RAILS
- DROP IN SINKS AND ICE BINS
- COLLAPSIBLE TABLE WITH BOTTOM SHELF



DROP-IN SINK



SPEED RAIL



SS TILE



BAR TOP



FRAME



Watch live video  
for this product.

**EASTERN**  
TABLETOP

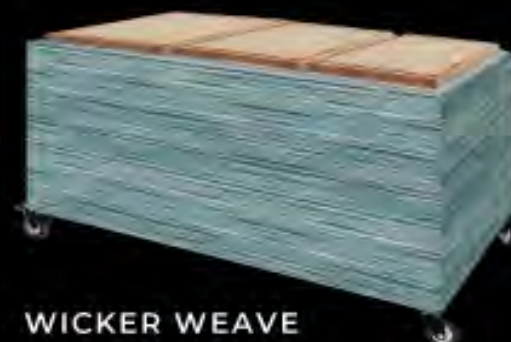
## THE HUB TABLE PANELS

# THE HUB DECOR COLLECTION

- PERFORATED STAINLESS STEEL PANELS CHOICE OF COLORS
- WICKER WEAVE - ANTIMICROBIAL VINYL PANELS
- 40+ COLORS
- VARIETY OF STOCK IMAGE SCREENS
- CUSTOM IMAGE OR LOGO OPTIONS



STAINLESS STEEL  
PERFORATED



WICKER WEAVE



SCREEN PRINTING

**VERSATILITY.**

**SIMPLICITY.**

**POWERFUL.**



EXPANDING YOUR BUFFET IS AS  
SIMPLE AS 1-2-3



Watch live video  
for this product.

# ZOZZ

MODULAR FLAT PACK

ZOZZ by Eastern brings you more innovation! Our Stretch Buffet is multi-functional and fully collapsible. It also works with existing HUB panels, so you can combine, mix and match.

We are so excited to continue to share this amazing product with you!

**EASTERN**  
TABLETOP

## THE STRETCH BUFFET



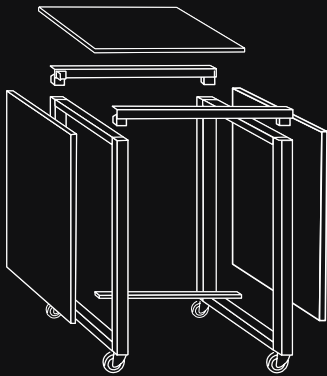
ADVANCEMENT • MULTI-FUNCTIONAL



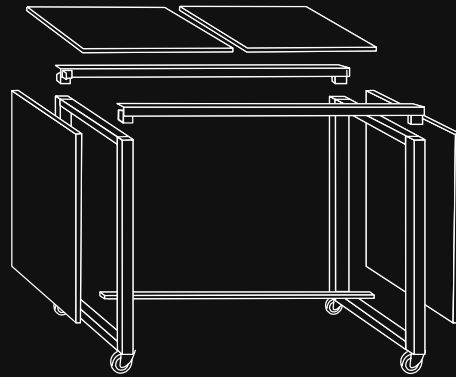
**ZOZZ**  
MODULAR FLAT PACK

## STRETCH BUFFET

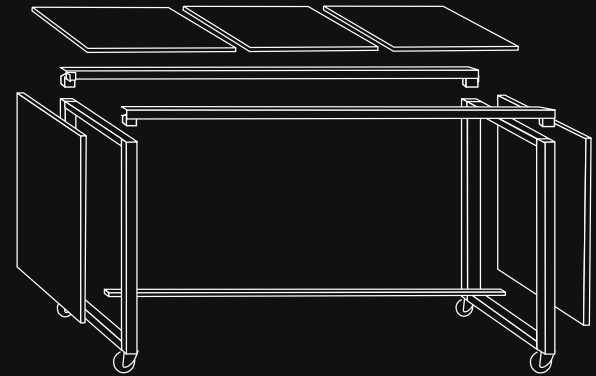
The Freedom of Movement ushers in the new era of buffet mobility with flat pack compact storage solutions.



1



2



3

One set of side frames can be used for 3 size table lengths.  
1, 2 or 3 tile table length.

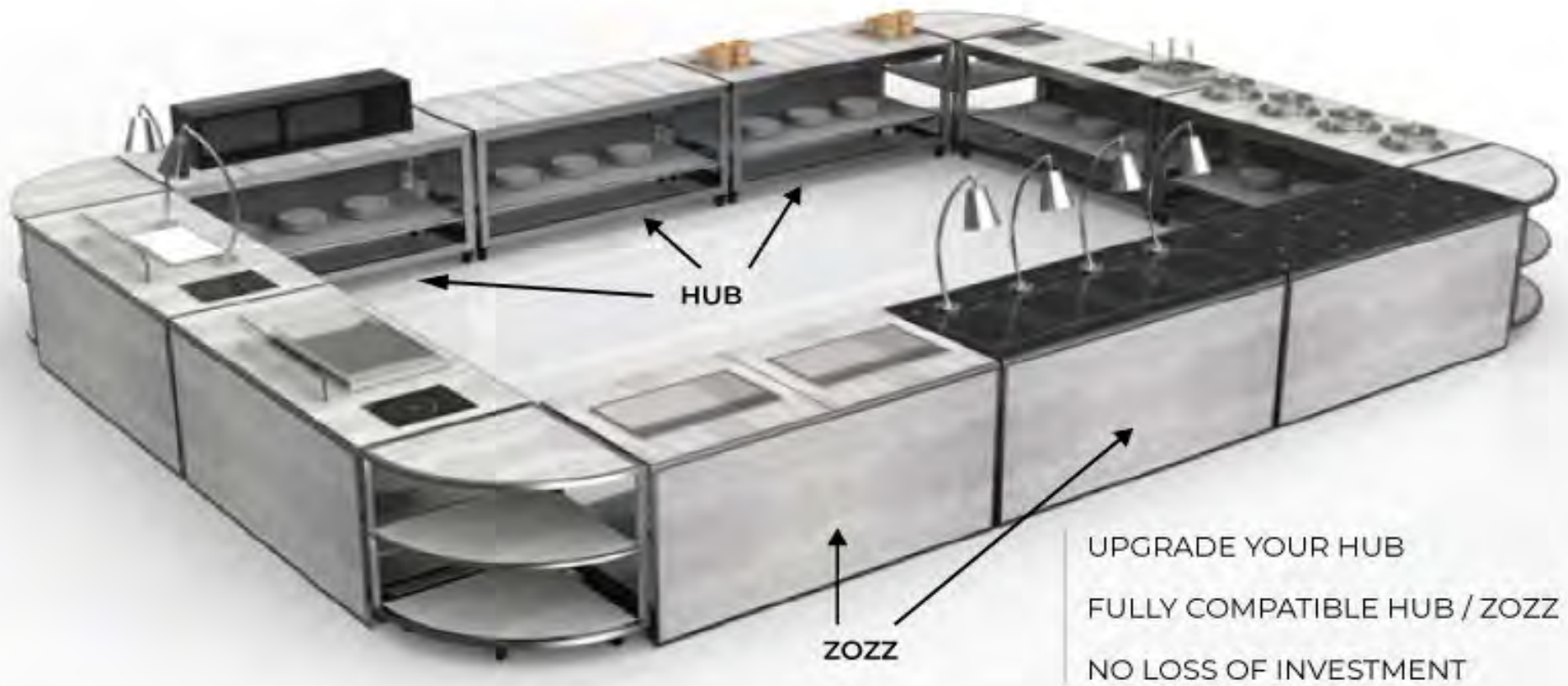
**ZOZZ**  
MODULAR FLAT PACK

# The ZOZZ Stretch Buffet!

Designed with the concept of

- DESIGN UPGRADE FULLY COVERED FRAMES
- EASY TRANSPORT - HEAVY DUTY LOCKING CASTERS
- NO HARDWARE NEEDED
- COMPACT STORAGE SOLUTIONS
- 1-3 TILE DESIGN



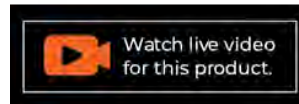


A one-time purchase that lasts a lifetime.

Timeless design and performance on day one. Invest with confidence.



## **BAR OPTIONS**





## **PORTABLE BAR 3 Panel Set**

ALL HUB TILES FIT ZOZZ COLLECTION



- STAINLESS STEEL AND REVERSIBLE OPTIONS
- SINGLE SIDED OR DOUBLE SIDED 3 PANEL SET

AVAILABLE IN GREY GRAIN/BLACK OR CHARCOAL / SANDSTONE



# PORTABLE BAR 3 Panel Set

ALL HUB TILES FIT ZOZZ COLLECTION

FRONT VIEW

COORDINATING TOP COUNTER

CHOICE OF LAMINATE COLORS

HIDDEN LOCKING CASTERS





## **PORTABLE BAR 3 Panel Set**

ALL HUB TILES FIT ZOZZ COLLECTION

**BACK VIEW**



- REMOVABLE COUNTER
- LOCKING CASTERS
- TWO REMOVABLE SPEED RAILS
- DOUBLE WALL ICE BIN WITH VALVE DRAIN
- BOTTOM SHELF FOR EXTRA STORAGE

# THE HUB



## PORTABLE TILE TILE FUNCTIONS

ALL HUB TILES FIT ZOZZ COLLECTION



SANDSTONE/CHARCOAL



GRAY GRAIN/BLACK



STAINLESS STEEL



GLASS



RAISED ICE BIN



DROP-IN ICE BIN



COMPLETE ICE BIN



WOODEN BUTCHER BLOCK



CUTTING BOARD



BUTCHER BLOCK



SQUARE COOKING  
INDUCTION



SINGLE ROUND  
WARMING INDUCTION



DOUBLE ROUND  
WARMING INDUCTION



GRIDDLE



OMELETTE STATION



HOT PLATE



HOT POT



DIMSUM



PLATE WARMER



PORTABLE BATTERY

• MORE HUB AND ZOZZ TILE OPTIONS AVAILABLE

EASTERN  
TABLETOP



**THE  
HUB**



# PORTABLE TILE TILE FUNCTIONS

ALL HUB TILES FIT ZOZZ COLLECTION



BLACK



GRAY GRAIN



STAINLESS STEEL



SANDSTONE



CHARCOAL



OPTIC REFLECTOR

## ANTIMICROBIAL WOVEN VINYL



BLUE LAGOON



KOZO ABALONE



TANGO CHARM

## SCREEN PRINT COLLECTION UNLIMITED PRINTING OPTIONS AVAILABLE ON WEBSITE



## PERFORATED COLLECTION



STAINLESS STEEL



BLACK



COPPER



BRONZE

**THE  
HUB**

**2022**  
MODULAR FLAT PACK

## **CORNER CARTS**

REVERSIBLE PANEL PORTABLE SELF-STANDING CORNER CARTS

BRIDGE THE GAP



BLACK



GRAY GRAIN



SANDSTONE



CHARCOAL



STAINLESS STEEL



**EASTERN**  
TABLETOP

**THE  
HUB**



## **TILE CONNECTORS**

INDIVIDUAL FLOATING CONNECTOR TILE  
BRIDGE THE GAP



BLACK



GRAY GRAIN



SANDSTONE



CHARCOAL



STAINLESS STEEL



## **SPACE SAVING TILE CONNECTORS**

**THE  
HUB**



**STORAGE CART  
QUICK ASSEMBLY  
NO HARDWARE**



**THE  
HUB**

**ZOZZ**  
MODULAR FLAT PACK

**FAQ**

### **Why is this the most efficient buffet system?**

- Mobile and portable
- Collapses to fold for storage
- Can be used to store equipment
- NO hardware needed
- NO tools or instruction manual needed
- Products are IN STOCK and ready to ship

### **What are some key extra features?**

- Stainless steel edged tiles protect corners
- EcoServe tile with EcoBurners fully function for both warming and cooking
- XYLO frame coating available for custom color options
- Batteries available in 1500 watt one battery per unit  
or 5000 watt one battery per table
- Battery conveniently stores under table frame and is out of sight
- Eastern's Bayonne factory is TOP RATED for customer support

# EASTERN TABLETOP

**Corporate Headquarters, Showroom & Warehouse:**

Eastern Tabletop Manufacturing Company Inc.  
50 Ingham Avenue  
Bayonne NJ 07002

**Telephone:**

1-718-240-9595

**Toll Free:**

1-888-422-4142

Connect with us on social media!



Visit [www.EasternTableTop.com](http://www.EasternTableTop.com) for full product details.

