

# Dalebrook®



GLOBAL  
TABLEWARE  
COLLECTIVE



**Dalebrook®**

# GLOBAL TABLEWARE COLLECTIVE



Global Tableware Collective (GTC) is a pioneering initiative in the hospitality industry, dedicated to enhancing the tabletop market through collaboration and innovation. Our mission is to empower under-represented brands by providing them with a platform to thrive collectively, which enables access to resources, expertise, and distribution channels previously out of reach. With showrooms in Chicago, IL & Youngstown, OH, GTC is prepared to redefine standards of excellence in the hospitality industry, one table setting at a time.

GTC's product portfolio begins with our cornerstone brand, Stölzle Lausitz, which exemplifies our values of quality, craftsmanship, and innovation. As we grow, we will continue to curate and expand the collection, ensuring each addition aligns with our high standards. With these strategic partnerships and dedicated support, GTC aims to offer a diverse range of products that cater to various dining experiences, from high-end restaurants to casual eateries. The GTC portfolio represents the beginning of a journey towards redefining excellence in hospitality tabletop offerings.



# Dalebrook®



For over 80 years, Dalebrook has been a global leader in the design and manufacturing of melamine tableware and food display solutions. Crafted with professionals in mind, Dalebrook collections combine style and functionality to elevate food presentation across a variety of industries. From forward-thinking hotels to fine dining establishments, Dalebrook's innovative designs inspire stunning displays worldwide.

Committed to quality and innovation, Dalebrook continually expands its product offerings, introducing new shapes, styles, and finishes while maintaining the highest standards. Accredited for excellence, Dalebrook delivers exceptional products backed by world-class service—helping food service professionals create unforgettable experiences.



## Dalebrook

### BUFFET

Angled Pot .....	64
Barrel .....	38
Bon Bon .....	37
Buffet Stands .....	24
Chrome Plated Stand .....	30
Frame Crate.....	16
Kata.....	20
Loom .....	26
Marble .....	33
Marl.....	34
Nimble.....	18
Ore.....	36
Peak .....	32
Slanted Riser.....	32
Slate .....	14
Stands .....	10
Talon.....	26
Tura .....	13
Twist .....	33
Urban.....	12
Wood Bark .....	15
Willow .....	31

### FOOD TO GO

Hive.....	42
-----------	----

### TABLEWARE

Appetite.....	65
Calla .....	65
Kiru.....	46
Lotus.....	65
Marl.....	60
Mayfair .....	48
Mineral.....	54
Pigment .....	58
Reef.....	62
Talon.....	50
Trafalgar.....	56
Tulipa .....	65
Care & Use .....	66









## Buffet

Dalebrook's buffet solutions are designed to impress, combining innovation with unmatched durability. From sleek stands to versatile displays, this collection of buffetware offers everything needed to create a stunning buffet presentation. Each piece is thoughtfully crafted to balance functionality with style, ensuring guests enjoy a seamless and visually striking dining experience.

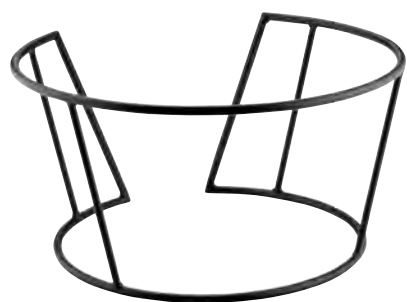




# Stands



Available in both rectangle and round sizes, the black metal buffet stands are conveniently designed to fit a series of platters and bowls from the Dalebrook range. The rectangle stands hold 1/2, 1/3, and 1/4 gastronorm platters, and are available in different heights to create a visual impact. Additionally, the rectangles can be flipped on either long edge to accommodate various platter designs and lock into place. Meanwhile, the round buffet stands are great for elevating larger bowls, or turned on their side & paired with 2/4 gastronorm trays for added dimension. Durable and versatile, these stands nest inside one another for a space-saving solution and provide endless opportunities for creative food displays.



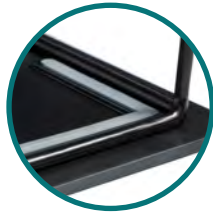
**Circular Buffet Stand**

D 16 1/2" (Top) D 13 5/8" (Bottom) H 8 5/8"  
DBTB3600

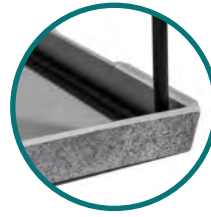


**Mini Circular Buffet Stand**

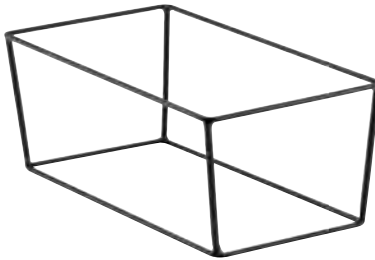
D 11" (Top) D 9 1/2" (Bottom) H 7 3/4"  
DBTB3500



Locks in with silicone feet



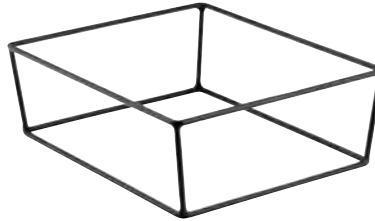
Flip to lock with platters



**Rectangular Buffet Stand**

L 12" W 10 1/8" H 7 7/8"  
DBTB3280

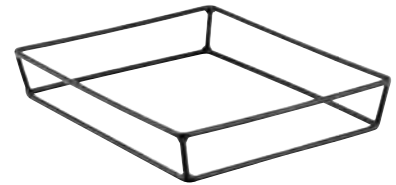
(Fits GN 1/2 Platters or Trays)



**Rectangular Buffet Stand**

L 12" W 10 1/8" H 3 7/8"  
DBTB3250

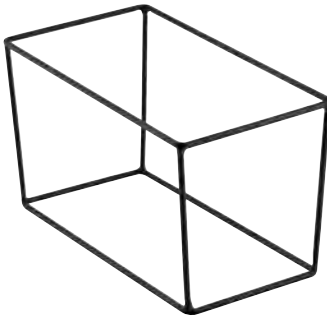
(Fits GN 1/2 Platters or Trays)



**Rectangular Buffet Stand**

L 12" W 10 1/8" H 2"  
DBTB3200

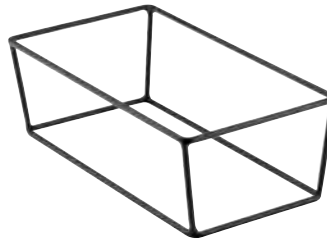
(Fits GN 1/2 Platters or Trays)



**Rectangular Buffet Stand**

L 11 1/2" W 6 5/8" H 7 7/8"  
DBTB3380

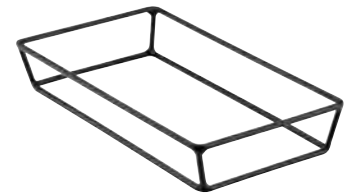
(Fits GN 1/3 Platters or Trays)



**Rectangular Buffet Stand**

L 12" W 6 1/2" H 3 7/8"  
DBTB3350

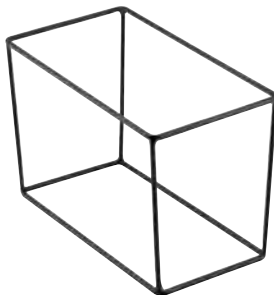
(Fits GN 1/3 Platters or Trays)



**Rectangular Buffet Stand**

L 12" W 6 1/2" H 2 1/8"  
DBTB3300

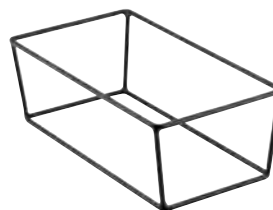
(Fits GN 1/3 Platters or Trays)



**Rectangular Buffet Stand**

L 9 5/8" W 6" H 7 7/8"  
DBTB3480

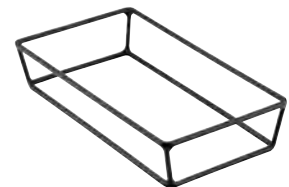
(Fits GN 1/4 Platters or Trays)



**Rectangular Buffet Stand**

L 9 5/8" W 6" H 3 7/8"  
DBTB3450

(Fits GN 1/4 Platters or Trays)



**Rectangular Buffet Stand**

L 9 5/8" W 6" H 2 1/8"  
DBTB3400

(Fits GN 1/4 Platters or Trays)



# Urban



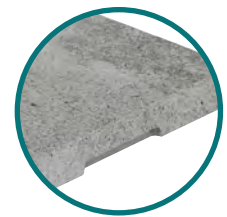
The Urban collection brings an industrial concrete look to any buffet or food display, making it the perfect choice for contemporary settings. With its raw, textured finish, and easy to lift handles on each side, this collection offers a sleek, modern aesthetic that enhances the food presentation. Ideal for both fresh food displays and buffet settings, the Urban pieces can be used on their own or paired with metal stands to bring the buffet presentation to new heights.



**GN 1/1 Platter**  
L 20 7/8" W 12 3/4"  
DBTCN9211



**GN 2/4 Platter**  
L 20 7/8" W 6 3/8"  
DBTCN9224



Easy to lift handle



**GN 1/2 Platter**  
L 12 3/4" W 10 3/8"  
DBTCN9212



**GN 1/3 Platter**  
L 12 3/4" W 6 7/8"  
DBTCN9213



**GN 1/4 Platter**  
L 10 3/8" W 6 3/8"  
DBTCN9214

# Tura



Tura platters & trays combine functionality and style, making them an essential addition to any food display. Designed with a gastronorm footprint to seamlessly fit into metal stands for organized and efficient service, these serving pieces also feature silicone feet to stay securely in place during use by preventing slipping and movement. A convenient handle on each side enables easy lifting and the light oak finish lends to a warm & natural feel.



**GN 1/2 Tray w/ Silicone Feet**  
L 12 3/4" W 10 3/8"  
DBTWD9512



**GN 2/4 Platter**  
L 20 7/8" W 6 3/8"  
DBTWD9224



Easy to lift handle



**GN 1/2 Platter**  
L 12 3/4" W 10 3/8"  
DBTWD9212



**GN 1/3 Platter**  
L 12 3/4" W 6 3/8"  
DBTWD9213

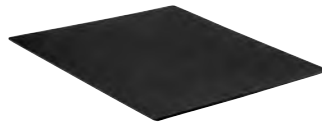


**GN 1/4 Platter**  
L 10 3/8" W 6 3/8"  
DBTWD9214

# Slate

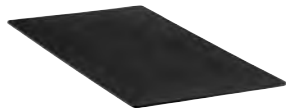


Slate Platters offer a sleek and sophisticated way to showcase everything from canapés to cheese to cakes. Unlike real slate, these stylish melamine platters are highly resistant to chips and breakage, ensuring long-lasting performance and durability. Featuring silicone feet to prevent slipping, these platters are available in gastronorm sizes and pair with the metal buffet stands.



**Slate GN 1/2 Tray w/ Silicone Feet**

L 12 3/4" W 10 1/2"  
DBTBS9912



**Slate GN 1/3 Tray w/ Silicone Feet**

L 12 3/4" W 7"  
DBTBS9913



**Slate GN 1/4 Tray w/ Silicone Feet**

L 10 1/2" W 6 3/8"  
DBTBS9914



# Wood Bark



The Wood Bark Collection brings a touch of rustic elegance to any buffet display. Crafted from lightweight melamine, its natural texture and unique bark edge create a charming, organic look that enhances any food presentation. Designed to work with the black buffet stands, these platters offer a striking contrast, elevating both the food and the display.



### **Oval Platter**

L 20 7/8" W 8 1/2"  
DBTWB9653

(Fits Mini Circular Buffet Stand DBTB3500)



### **Gastronorm 1/3 Platter**

L 12 3/4" W 6 7/8"  
DBTWB9613



### **Round Platter**

D 11"  
DBTWB9628



### **Round Platter**

D 8 1/4"  
DBTWB9621

# Frame Crate



Frame Crates are the perfect way to present food with style and innovation. Designed to function as frames for culinary creations, these melamine crates will stack neatly so operators can easily add or subtract a crate, giving the freedom to customize displays to suit any occasion. Top with a 1/2 gastronorm platter in black or Tura to complete the desired look.



**GN 1/2 Frame Crate (Tura)**

L 13 5/8" W 11" H 1 7/8"

DBTWD3412

Requires GN 1/2 Tray  
DBTBS9912 or DBTWD9512



**Tura GN 1/2 Tray w/ Silicone Feet**

L 12 3/4" W 10 3/8"

DBTWD9512



**GN 1/2 Frame Crate (Black)**

L 13 5/8" W 11 3/8" H 2"

DBTB3412

Requires GN 1/2 Tray  
DBTBS9912 or DBTWD9512



**Slate GN 1/2 Tray w/ Silicone Feet**

L 12 3/4" W 10 1/2"

DBTBS9912



# Nimble



The Nimble range offers a versatile and convenient solution for operators seeking to enhance their buffet setups. Crafted from durable bamboo, these pieces bring a natural, eco-friendly touch to food presentation and are designed for use with Dalebrook's Kata Collection. Furthermore, the bamboo is bacteria-resistant and when paired with Nimble's convenient flat packaging, this range is easy to clean & assemble making it as practical as it is stylish.



### Lid

L 13 3/8" W 11" | DBBMO4206L  
 L 20 3/8" W 7 1/2" | DBBMO4208L  
 L 10 1/8" W 7 1/8" | DBBMO4202L  
 L 6 3/4" W 5 7/8" | DBBMO4204L



### Stand

L 12 1/4" W 11 3/8" H 8 1/4" | DBBMO4206B  
 L 21 1/2" W 8 5/8" H 8 1/4" | DBBMO4208B  
 L 11 1/4" W 8 5/8" H 8 1/4" | DBBMO4202B  
 L 7 7/8" W 7 1/8" H 8 1/4" | DBBMO4204B



# Kata



The Kata crocks are a timeless addition to any buffet setup, offering both style and practicality. Available in three classic finishes—Blanc, Noir, and Speckled White—these versatile vessels complement any display with understated sophistication. The crocks feature a reversible design which allows them to be used upside down as a riser, providing flexibility in presentation while maximizing space. Perfect for adding variety to your buffet displays, the Kata crocks pair seamlessly with Nimble bamboo lids & risers.





## Blanc



**Crock**  
7 qt | L 20 1/2" W 6 7/8" H 3 7/8"  
DBTW4218



**Crock**  
4 1/2 qt | L 20 1/2" W 6 7/8" H 2 3/4"  
DBTW4228



**Crock**  
1 3/4 qt | L 20 1/2" W 6 7/8" H 1 5/8"  
DBTW4238



**Crock**  
7 qt | L 13 5/8" W 10 1/4" H 3 7/8"  
DBTW4216



**Crock**  
4 1/2 qt | L 13 5/8" W 10 1/4" H 2 3/4"  
DBTW4226



**Crock**  
2 qt | L 13 5/8" W 10 1/4" H 1 5/8"  
DBTW4236



**Crock**  
3 1/2 qt | L 10 1/4" W 6 7/8" H 3 7/8"  
DBTW4212



**Crock**  
2 qt | L 10 1/4" W 6 7/8" H 2 3/4"  
DBTW4222



**Crock**  
25 1/2 oz | L 10 1/4" W 6 7/8" H 1 5/8"  
DBTW4232



**Crock**  
1 1/2 qt | L 6 7/8" W 5 1/8" H 3 7/8"  
DBTW4214



**Crock**  
28 3/4 oz | L 6 7/8" W 5 1/8" H 2 3/4"  
DBTW4224



**Crock**  
11 3/4 oz | L 6 7/8" W 5 1/8" H 1 5/8"  
DBTW4234

# Kata

## Noir



### Crock

9 1/2 qt | L 13 5/8" W 20 1/2" H 2 3/4"  
DBTB4220



### Crock

7 qt | L 20 1/2" W 6 7/8" H 3 7/8"  
DBTB4218



### Crock

4 1/2 qt | L 20 1/2" W 6 7/8" H 2 3/4"  
DBTB4228



### Crock

1 3/4 qt | L 20 1/2" W 6 7/8" H 1 5/8"  
DBTB4238



### Crock

7 qt | L 13 5/8" W 10 1/4" H 3 7/8"  
DBTB4216



### Crock

4 1/2 qt | L 13 5/8" W 10 1/4" H 2 3/4"  
DBTB4226



### Crock

2 qt | L 13 5/8" W 10 1/4" H 1 5/8"  
DBTB4236



### Crock

3 1/2 qt | L 10 1/4" W 6 7/8" H 3 7/8"  
DBTB4212



### Crock

2 qt | L 10 1/4" W 6 7/8" H 2 3/4"  
DBTB4222



### Crock

25 1/2 oz | L 10 1/4" W 6 7/8" H 1 5/8"  
DBTB4232



### Crock

1 1/2 qt | L 6 7/8" W 5 1/8" H 3 7/8"  
DBTB4214



### Crock

28 3/4 oz | L 6 7/8" W 5 1/8" H 2 3/4"  
DBTB4224



### Crock

11 3/4 oz | L 6 7/8" W 5 1/8" H 1 5/8"  
DBTB4234



## Speckled White



**Crock**  
7 qt | L 20 1/2" W 6 7/8" H 3 7/8"  
DBTKTW4218



**Crock**  
4 1/2 qt | L 20 1/2" W 6 7/8" H 2 3/4"  
DBTKTW4228



**Crock**  
2 qt | L 10 1/4" W 6 7/8" H 2 3/4"  
DBTKTW4222



**Crock**  
1 1/2 qt | L 6 7/8" W 5 1/8" H 3 7/8"  
DBTKTW4214



**Crock**  
28 3/4 oz | L 6 7/8" W 5 1/8" H 2 3/4"  
DBTKTW4224



# Buffet Stands



Crafted from high-quality white melamine, these interchangeable buffet stands offer both durability and style. Designed for flexibility, two pedestal bases can accommodate five different tops with an easy-to-use screw fit, providing versatility for different buffet configurations. The clean, neutral finish complements any décor, allowing food displays to take center stage.



**Pedestal Base**  
D 8" H 8"  
DBM08



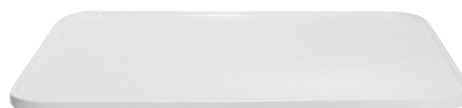
**Pedestal Base**  
D 8 1/4" H 4"  
DBM09



**Ellipse Pedestal Top**  
3 3/4 qt | L 26 1/4" W 9 1/2" H 3 5/8"  
DBM04



**Large Round Pedestal Top**  
D 16" H 1 1/2"  
DBM06



**Large Square Pedestal Top**  
LW 16" H 1 1/4"  
DBM05



**Pedestal Top**  
1 1/2 qt | L 22" W 12 3/4" H 2 1/4"  
DBM03



**Pedestal Top**  
6 1/4 qt | D 16" H 3 3/4"  
DBM07

# Loom & Talon



Loom & Talon are clever food display ranges that seamlessly combine modular platters & pedestals with versatile dome lids to provide the ultimate display for pastries, cakes, and more. Mix & match the colored Talon pedestals and handles with Loom platters and domes to create custom displays that fit any occasion. Additionally, the innovative design allows the dome to be flipped and securely attached to the pedestal to craft a multifunctional display.





# Loom



**Dome Lid w/ Clear Handle**  
D 10 5/8" H 6 1/2"  
DBTC42680



**Dome Lid w/ Clear Handle**  
D 7 7/8" H 6 1/2"  
DBTC42638



**Dome Lid w/ Alloy Handle**  
D 10 5/8" H 7 1/2"  
DBTC52680



**Dome Lid w/ Alloy Handle**  
D 7 7/8" H 7"  
DBTC52638



**Cake Pedestal Flat Top**  
D 11 1/4"  
DBT1412  
Requires Talon Pedestal  
50020 or 50019



**Cake Pedestal Flat Top**  
D 8 5/8"  
DBT1411  
Requires Talon Pedestal  
50020 or 50019

# Talon

## Cherry



### **Pedestal Tall**

D 4 1/4" H 4 1/2"  
DBTRC50020

(Fits DBT1412, DBT1411)



### **Pedestal Short**

D 4 1/4" H 2 1/2"  
DBTRC50019

(Fits DBT1412, DBT1411)



### **Handle**

D 1 3/4"  
DBTRC50021

(Fits DBTC42680, DBTC42638)

## Mint



### **Pedestal Tall**

D 4 1/4" H 4 1/2"  
DBTMG50020

(Fits DBT1412, DBT1411)



### **Pedestal Short**

D 4 1/4" H 2 1/2"  
DBTMG50019

(Fits DBT1412, DBT1411)



### **Handle**

D 1 3/4"  
DBTMG50021

(Fits DBTC42680, DBTC42638)

## Oat



### **Pedestal Tall**

D 4 1/4" H 4 1/2"  
DBTCM50020

(Fits DBT1412, DBT1411)



### **Pedestal Short**

D 4 1/4" H 2 1/2"  
DBTCM50019

(Fits DBT1412, DBT1411)



### **Handle**

D 1 3/4"  
DBTCM50021

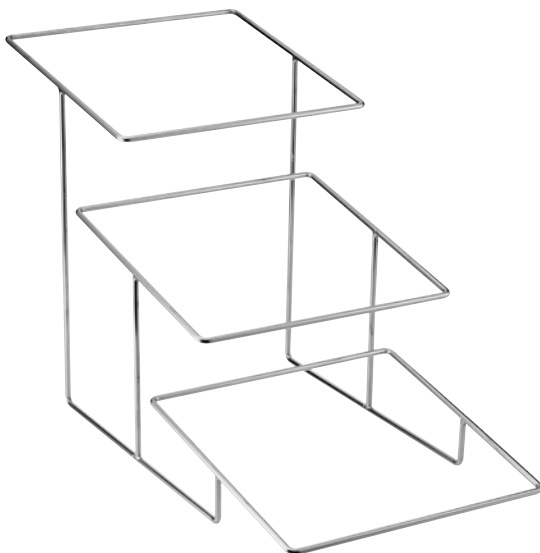
(Fits DBTC42680, DBTC42638)



# Chrome Plated Stand



The Chrome Plated 3-Tier Stand offers a polished, modern aesthetic that enhances any buffet display. Its sleek chrome finish adds a touch of elegance while seamlessly complementing a wide range of buffetware. Paired with Dalebrook's Willow Basket, this stand creates a dynamic presentation that's both functional and visually striking. Willow wicker baskets can also be used as a standalone presentation, and are perfect for displaying bread, pastries, fruits, or other culinary delights. These baskets seamlessly blend style and functionality and their lightweight design makes them easy to reposition, enhancing any food presentation.



## **Chrome Plated 3 Tier Stand**

L 28" W 13" H 17 1/4"

DBTCP1799

(Fits Willow DBW1799)

# Willow



**Rectangle Basket**

L 21 5/8" W 7 5/8" H 4 3/8"  
DBW430



**Basket**

L 13 1/4" W 13" H 4 1/2"  
DBW1799  
(Fits DBTCP1799)



**Basket**

L 16 1/2" W 11" H 2"  
DBW1071



**Basket**

L 12 3/4" W 10 3/8" H 2"  
DBW1012



**Basket**

LW 11" H 2"  
DBW1072



**Basket**

L 11" W 8 1/4" H 2"  
DBW1073



**Basket**

LW 8 1/4" H 2"  
DBW1074



**Round Basket**

D 8 1/2" H 3 5/8"  
DBW251



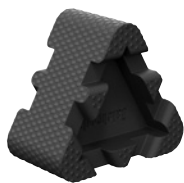
**Round Basket**

D 6 1/2" H 4 1/8"  
DBW250

# Peak & Slanted Riser



Crafted from high-quality thermoplastic material, the Peak Riser combines durability with innovative design. Its elasticity and rubber-like texture evenly disperses weight ensuring stability, while its non-slip surface adds convenience for self-service buffets. Peak can be laid flat, upright like a pyramid, or interlocked to create varying heights on foodservice displays. On the other hand, Slanted Risers feature an open circular structure with a gentle incline and non-slip coating that brings depth and dimension to any food display. Perfect for showcasing platters or bowls, the slanted design enhances visibility, making it easy for guests to access and admire the offerings.



**Peak Riser**  
L 4 3/8" W 1 5/8" H 2"  
DBTB4125



**Non-slip Slanted Riser  
(Black)**  
D 3 1/2" H 1 1/8"  
DBTB114



**Non-slip Slanted Riser  
(White)**  
D 3 1/2" H 1 1/8"  
DBT114



# Twist & Marble



The Twist Polycarbonate Risers bring a bold, contemporary edge to any buffet display. Available in both sleek black and clear finishes, these risers feature a unique twist design that adds visual interest and height to food presentations. Crafted from durable polycarbonate, Twist will pair with large sized platters and bowls from a variety of Dalebrook ranges, including the White Carrera Marble melamine platter or the Marl Collection.



**Twist PC Riser  
(Black)**

H 5 7/8" | DBTB3615  
H 3 7/8" | DBTB3610  
H 2" | DBTB3605



**Twist PC Riser  
(Clear)**

H 5 7/8" | DBTC3615  
H 3 7/8" | DBTC3610  
H 2" | DBTC3605



**Round Platter  
White Carrera Marble**

D 11 1/4"  
DBTMA3028

# Marl



The Marl Collection features an array of crocks, bowls, and platters designed to enhance food presentations. With a sleek aesthetic and a gastronorm footprint, Marl seamlessly integrates into any food display setup, offering both beauty and practicality. Crafted to preserve both the presentation and freshness of food, Marl is available Charcoal Grey, Cream, and Steel Blue, and pairs nicely with the Twist Riser to elevate the presentation.

## Charcoal Grey



### **Gastronorm 1/2 Crock**

4 qt | L 12 3/4" W 10 3/8" H 3 1/8" | DBTGY4612

### **Gastronorm 1/3 Crock**

2 3/4 qt | L 12 3/4" W 6 7/8" H 3 1/8" | DBTGY4613

### **Gastronorm 1/4 Crock**

1 3/4 qt | L 9 7/8" W 6 3/8" H 3 1/8" | DBTGY4614



### **Deep Dish**

D 15 1/8" H 1 7/8"  
DBTGY4605



### **Large Deep Plate**

D 11" H 1 7/8"  
DBTGY4603



### **Shallow Dish**

D 15 1/8" H 1"  
DBTGY4604



### **Large Shallow Plate**

D 11" H 1"  
DBTGY4602

## Cream



**Gastronorm 1/2 Crock**

4 qt | L 12 3/4" W 10 3/8" H 3 1/8" | DBTCM4612

**Gastronorm 1/3 Crock**

2 3/4 qt | L 12 3/4" W 6 7/8" H 3 1/8" | DBTCM4613

**Gastronorm 1/4 Crock**

1 3/4 qt | L 9 7/8" W 6 3/8" H 3 1/8" | DBTCM4614



**Deep Dish**

D 15 1/8" H 1 7/8"  
DBTCM4605



**Large Deep Plate**

D 11" H 1 7/8"  
DBTCM4603



**Shallow Dish**

D 15 1/8" H 1"  
DBTCM4604



**Large Shallow Plate**

D 11" H 1"  
DBTCM4602

## Steel Blue



**Gastronorm 1/2 Crock**

4 qt | L 12 3/4" W 10 3/8" H 3 1/8" | DBTBL4612

**Gastronorm 1/3 Crock**

2 3/4 qt | L 12 3/4" W 6 7/8" H 3 1/8" | DBTBL4613

**Gastronorm 1/4 Crock**

1 3/4 qt | L 9 7/8" W 6 3/8" H 3 1/8" | DBTBL4614



**Deep Dish**

D 15 1/8" H 1 7/8"  
DBTBL4605



**Large Deep Plate**

D 11" H 1 7/8"  
DBTBL4603



**Shallow Dish**

D 15 1/8" H 1"  
DBTBL4604



**Large Shallow Plate**

D 11" H 1"  
DBTBL4602



# Ore



Clean and simple, Ore by Dalebrook features a stainless steel Greblon coating that is compatible with induction hobs, ensuring efficient and reliable performance. Its unique corner handles eliminate tray clashes and prevent blocked food displays, providing a seamless presentation every time. Whether used in bustling buffet settings or upscale food service environments, Ore offers the perfect balance of functionality and modern design.



**Greblon Crock**

5 1/4 qt | L 12 3/4" W 10 3/8" H 2 3/4"  
DBTSSB2612



**Greblon Crock**

3 1/4 qt | L 12 3/4" W 6 7/8" H 2 3/4"  
DBTSSB2613



**Greblon Crock**

2 3/4 qt | L 10 3/8" W 6 1/2" H 3 3/4"  
DBTSSB2614

# Bon Bon



Crafted from strong, unbreakable polycarbonate, the Bon Bon Jars are designed to combine durability with practicality. Available in two sizes with a universal lid, these jars provide versatility for storing and displaying a variety of items, from snacks to dry goods.



**PC Display Container**  
6 qt | D 6 7/8" H 11 3/4"  
DBTC9115



**PC Display Container**  
3 3/4 qt | D 6 7/8" H 7 7/8"  
DBTC9114



**PC Display Container Lid**  
D 6 7/8" H 3 3/8"  
DBTC9175



# Barrel



The Barrel Bowl Collection is a fantastic choice for both food and drink displays. For a rustic aesthetic, choose the durable ABS Barrel Bowl, or opt for a more natural look with the Tura Barrel Bowl. Designed with versatility in mind, the melamine liners make it easy to display various quantities while maintaining a polished and organized presentation. Perfect for buffets, special events, or table service, the Barrel Bowls bring style and practicality to foodservice.





**ABS Barrel Bowl**  
10 1/2 qt | D 11 1/2" H 7 5/8"  
DBBB300



**Black Bowl Liner**  
8 1/2 qt | D 12" H 6 3/4" | DBBLB355  
6 3/4 qt | D 12 1/8" H 6" | DBBLB360  
4 3/4 qt | D 12 1/8" H 3 1/2" | DBBLB350  
(Fits Barrel Bowl DBBB300)



**ABS Barrel Bowl**  
8 qt | D 10 1/4" H 7 5/8"  
DBBB353



**Black Bowl Liner**  
6 qt | D 10 1/2" H 6 3/4"  
DBBLB353  
(Fits Barrel Bowl DBBB353)



**ABS Barrel Bowl**  
5 3/4 qt | D 9 3/4" H 5"  
DBBB352



**Black Bowl Liner**  
4 qt | D 9 3/4" H 5"  
DBBLB352  
(Fits Barrel Bowl DBBB352)



**Tura Barrel Bowl**  
7 qt | D 10 3/8" H 7 7/8"  
DBTWD300



**Tura Barrel Bowl**  
3 1/2 qt | D 8 3/8" H 6 1/4"  
DBTWD351



**Tura GN 2/4 Crock**  
3 3/4 qt | L 20 7/8" W 6 3/8" H 3 1/4"  
DBTWD77240





## Food To Go

### Stylish Solution for On-the-Move Dining

The demand for high-quality, convenient dining options continues to rise, and the "Food to Go" collection offers the perfect balance of functionality and design. Ideal for takeout and grab-and-go concepts, this range ensures food looks just as good on the move as it does on display.





# Hive



Hive redefines portable dining with its range of different shapes and sizes, tailored to meet the needs of modern grab-and-go concepts. Crafted from durable copolyester, Hive containers are designed to withstand everyday use while maintaining a sleek, contemporary appearance. Each container is paired with a reusable lid, making it an eco-friendly choice for operators looking to reduce waste without compromising on quality.



**Tray**  
1 qt | L 12 1/8" W 6 1/8" H 1 3/8" | DBTGY72161W  
**Tray Lid**  
L 9" W 7 3/8" | DBTCC7216L | Fits 72161



**Tray**  
23 3/4 oz | L 9 3/8" W 4 7/8" H 1 5/8" | DBTGY72151W  
**Tray Lid**  
L 9 1/2" W 4 7/8" | DBTCC7215L | Fits 72151



**Salad Dish**  
1 qt | D 7 1/4" H 2 1/2" | DBTGY72181W  
**Salad Dish Lid**  
D 7 3/8" | DBTCC7218L | Fits 72181



**Salad Dish**  
23 3/4 oz | D 5 7/8" H 2 1/2" | DBTGY72171W  
**Salad Dish Lid**  
D 6" | DBTCC7217L | Fits 72171



**Soup Pot**  
16 oz | D 4 1/2" H 3" | DBTGY72132W  
**Soup & Dessert Lid**  
D 4 3/4" | DBTCC7213L | Fits 72131 & 72132



**Soup Pot**  
12 oz | D 4 1/2" H 2 1/4" | DBTGY72131W  
**Soup & Dessert Lid**  
D 4 3/4" | DBTCC7213L | Fits 72131 & 72132



**Soup Pot**  
8 oz | D 3 1/2" H 2 5/8" | DBTGY72125W  
**Soup & Dessert Lid**  
D 3 3/4" | DBTCC7212L | Fits 72125



**Dip Pot**  
2 oz | D 2 3/8" H 1 1/4" | DBTCC72112  
**Dip Pot Lid**  
D 2 1/2" | DBTCC7211L | Fits 72111 & 72112



**Dip Pot**  
1 oz | D 2 3/8" H 3/4" | DBTCC72111  
**Dip Pot Lid**  
D 2 1/2" | DBTCC7211L | Fits 72111 & 72112







## Tableware

### The Beauty of Melamine

Redefine tabletop presentations with Dalebrook's expertly crafted melamine tableware collections. Designed to combine stunning aesthetics with exceptional durability, these pieces deliver the look and feel of premium materials while offering the practicality required for professional use. Discover versatile designs that elevate any dining experience while standing up to the demands of everyday service.



# Kiru



The Kiru melamine bento boxes seamlessly blend functionality with a contemporary aesthetic, making them ideal for showcasing a diverse array of culinary creations. Perfect for both on-the-go meals and sophisticated dining presentations, Kiru elevates food service with its sleek design and practicality. Convenient, interchangeable inserts allow for the separation of food and the stacking design provides a space-saving solution for operators.



**Bento Set w/ White Inserts  
(Beach)**

LW 10" H 3 / 4"  
DBTCM4105TAQ



**Bento Set w/ White Inserts  
(Black)**

LW 10" H 3 / 4"  
DBTB4105



**Bento Set w/ White Inserts  
(White)**

LW 10" H 3 / 4"  
DBT4105



# Mayfair



Simple, clean, and functional, the Mayfair Bento Box is the epitome of minimalist design in durable melamine. Available in three sizes, it's the perfect solution for room service, poolside dining, or casual yet refined food presentation. The innovative design includes a plate that doubles as a lid, making it ideal for transporting meals with ease while maintaining a polished look. With Mayfair, functionality meets understated elegance, offering a seamless dining experience from preparation to presentation.

## Blue



### Large Plate/Lid

D 11" | DBTSG4653BL

(Fits DBTSG4655)



### Medium Plate/Lid

D 8 1/4" | DBTSG4652BL

(Fits DBTSG4656)



### Small Plate/Lid

D 5 1/2" | DBTSG4651BL

(Fits DBTSG4654)



### Large Dish

2 1/2 qt | D 10 3/4" H 2 1/2"

DBTSG4655BL



### Medium Dish

1 1/2 qt | D 7 7/8" H 2 1/2"

DBTSG4656BL



### Small Dish

17 oz | D 5 1/8" H 2 1/2"

DBTSG4654BL

## Green



**Large Plate/Lid**  
D 11" | DBTSG4653G  
(Fits DBTSG4655)



**Medium Plate/Lid**  
D 8 1/4" | DBTSG4652G  
(Fits DBTSG4656)



**Small Plate/Lid**  
D 5 1/2" | DBTSG4651G  
(Fits DBTSG4654)



**Large Dish**  
2 1/2 qt | D 10 3/4" H 2 1/2"  
DBTSG4655G



**Medium Dish**  
1 1/2 qt | D 7 7/8" H 2 1/2"  
DBTSG4656G



**Small Dish**  
17 oz | D 5 1/8" H 2 1/2"  
DBTSG4654G

## Yellow



**Large Plate/Lid**  
D 11" | DBTSG4653Y  
(Fits DBTSG4655)



**Medium Plate/Lid**  
D 8 1/4" | DBTSG4652Y  
(Fits DBTSG4656)



**Small Plate/Lid**  
D 5 1/2" | DBTSG4651Y  
(Fits DBTSG4654)



**Large Dish**  
2 1/2 qt | D 10 3/4" H 2 1/2"  
DBTSG4655Y



**Medium Dish**  
1 1/2 qt | D 7 7/8" H 2 1/2"  
DBTSG4656Y



**Small Dish**  
17 oz | D 5 1/8" H 2 1/2"  
DBTSG4654Y

# Talon



Bringing the versatility of Talon to the table, this melamine dinnerware range redefines contemporary dining with its sleek and modern design. Available in Cherry, Mint, and Oat colorways, Talon adds a subtle yet striking aesthetic to any setting. Perfectly suited for both casual and upscale environments, Talon's durable melamine construction ensures practicality without sacrificing style.



## Cherry



**Plate/Lid**  
D 9 7/8"  
DBTRC50016  
(Fits 50015)



**Plate/Lid**  
D 8"  
DBTRC50014  
(Fits 50013)



**Plate/Lid**  
D 5 5/8"  
DBTRC50012  
(Fits 50011)



**Bowl**  
1 3/4 qt | D 9 1/2" H 2 3/4"  
DBTRC50015



**Bowl**  
28 3/4 oz | D 7 5/8"  
DBTRC50013



**Bowl**  
14 1/4 oz | D 5 1/2"  
DBTRC50011



**Pill Plate/Lid**  
L 13" W 7" H 1 1/8"  
DBTRC50018  
(Fits 50017)



**Pill Dish**  
1 1/4 qt | L 12 1/2" W 6 3/8" H 2 3/8"  
DBTRC50017



**Coffee Cup**  
10 oz | D 3 1/2" H 3 5/8"  
DBTRC5018



**Tea & Coffee Saucer**  
D 5 7/8"  
DBTRC5014  
(Fits 5018)



**Plate &  
Bowl Stack**

continued on page 56

# Talon

## Mint



**Plate/Lid**  
D 9 7/8"  
DBTMG50016  
(Fits 50015)



**Plate/Lid**  
D 8"  
DBTMG50014  
(Fits 50013)



**Plate/Lid**  
D 5 5/8"  
DBTMG50012  
(Fits 50011)



**Bowl**  
1 3/4 qt | D 9 1/2" H 2 3/4"  
DBTMG50015



**Bowl**  
28 3/4 oz | D 7 5/8"  
DBTMG50013



**Bowl**  
14 1/4 oz | D 5 1/2"  
DBTMG50011



**Pill Plate/Lid**  
L 13" W 7" H 1 1/8"  
DBTMG50018  
(Fits 50018)



**Pill Dish**  
1 1/4 qt | L 12 1/2" W 6 3/8" H 2 3/8"  
DBTMG50017



**Coffee Cup**  
10 oz | D 3 1/2" H 3 5/8"  
DBTMG5018



**Tea & Coffee Saucer**  
D 5 7/8"  
DBTMG5014  
(Fits 5018)

# Talon

## Oat



**Plate/Lid**  
D 9 7/8"  
DBTCM50016  
(Fits 50015)



**Plate/Lid**  
D 8"  
DBTCM50014  
(Fits 50013)



**Plate/Lid**  
D 5 5/8"  
DBTCM50012  
(Fits 50011)



**Bowl**  
1 3/4 qt | D 9 1/2" H 2 3/4"  
DBTCM50015



**Bowl**  
28 3/4 oz | D 7 5/8"  
DBTCM50013



**Bowl**  
14 1/4 oz | D 5 1/2"  
DBTCM50011



**Pill Plate/Lid**  
L 13" W 7" H 1 1/8"  
DBTCM50018  
(Fits 50017)



**Pill Dish**  
1 1/4 qt | L 12 1/2" W 6 3/8" H 2 3/8"  
DBTCM50017



**Coffee Cup**  
10 oz | D 3 1/2" H 3 5/8"  
DBTCM50018



**Tea & Coffee Saucer**  
D 5 7/8"  
DBTCM5014  
(Fits 5018)



**Pill Plate &  
Pill Dish Stack**



# Mineral



The Mineral Dinnerware Collection offers the look of handcrafted ceramic stoneware, paired with the practicality of melamine. Featuring a matte texture with subtle, light-catching glossy particles, this collection brings a touch of elegance to any dining experience.

## Noir



### Plate

D 11 3/4" H 2" | DBTB4710  
D 10" H 1 1/8" | DBTB4713  
D 8 1/8" H 1 3/4" | DBTB4709  
D 8" H 1 1/8" | DBTB4712



### Platter

L 12" W 9" H 1 1/8"  
DBTB4716



### Dish

1 1/2 qt | D 9 1/2" H 2"  
DBTB4708



### Bowl

15 1/4 oz | D 6 1/4" H 1 3/4"  
DBTB4715



### Ramekin

2 1/4 oz | D 3 3/8" H 1 1/8"  
DBTB4714

## Aqua



### Plate

D 11 3/4" H 2" | DBTAQ4710  
D 10" H 1 1/8" | DBTAQ4713  
D 8 1/8" H 1 3/4" | DBTAQ4709  
D 8" H 1 1/8" | DBTAQ4712



### Platter

L 12" W 9" H 1 1/8"  
DBTAQ4716



### Dish

1 1/2 qt | D 9 1/2" H 2"  
DBTAQ4708



### Bowl

15 1/4 oz | D 6 1/4" H 1 3/4"  
DBTAQ4715



### Ramekin

2 1/4 oz | D 3 3/8" H 1 1/8"  
DBTAQ4714

## Parchment



### Plate

D 11 3/4" H 2" | DBTCM4710  
D 10" H 1 1/8" | DBTCM4713  
D 8 1/8" H 1 3/4" | DBTCM4709  
D 8" H 1 1/8" | DBTCM4712



### Platter

L 12" W 9" H 1 1/8"  
DBTCM4716



### Dish

1 1/2 qt | D 9 1/2" H 2"  
DBTCM4708



### Bowl

15 1/4 oz | D 6 1/4" H 1 3/4"  
DBTCM4715



### Ramekin

2 1/4 oz | D 3 3/8" H 1 1/8"  
DBTCM4714

# Trafalgar



The Trafalgar Collection embodies minimalism and subtle sophistication, making it a seamless addition to any tabletop. With its matte texture, the collection offers a natural, contemporary finish while benefiting from the practicality and durability that melamine is known for.



## White & Grape



### Square Plate

LW 12" | DBTW4723GRP  
LW 10" | DBTW4722GRP  
LW 8" | DBTW4721GRP



### Shallow Dish

L 12 1/2" W 11 5/8" H 1 3/4" | DBTW4726GRP  
L 11" W 10 1/4" H 1 1/2" | DBTW4725GRP  
L 9 5/8" W 8 7/8" H 1 3/8" | DBTW4724GRP



### Bowl

28 3/4 oz | D 7 1/2" H 3 1/8"  
DBTW4727GRP



### Pot

11 oz | D 4 3/4" H 2 7/8"  
DBTW4738GRP

## White & Taupe



### Square Plate

LW 12" | DBTW4723TP  
LW 10" | DBTW4722TP  
LW 8" | DBTW4721TP



### Shallow Dish

L 12 1/2" W 11 5/8" H 1 3/4" | DBTW4726TP  
L 11" W 10 1/4" H 1 1/2" | DBTW4725TP  
L 9 5/8" W 8 7/8" H 1 3/8" | DBTW4724TP



### Oval Dish Insert

25 1/4 oz | L 10 1/2" W 8 1/4" H 1 1/2"  
DBTW4729TP



### Oval Dish

2 qt | L 11" W 8 1/4" H 2 3/4"  
DBTW4728TP



### Bowl

28 3/4 oz | D 7 1/2" H 3 1/8"  
DBTW4727TP



### Pot

11 oz | D 4 3/4" H 2 7/8"  
DBTW4738TP

# Pigment



The Pigment Collection offers a contemporary solution for food displays, blending modern aesthetics with functional design. These bowls feature a matte texture and a sleek black finish, providing a minimalist yet striking backdrop for showcasing culinary creations. Perfect for any food display setting, Pigment's understated elegance complements a variety of presentation styles, making it a popular choice for modern food service environments.

## Noir



**Bowl**  
4 1/4 qt | D 13 1/4" H 3 5/8"  
DBTB4707



**Bowl**  
3 1/2 qt | D 12 1/4" H 3 1/4"  
DBTB4706



**Bowl**  
1 1/4 qt | L 9 1/2" W 7 7/8" H 3 1/2"  
DBTB4705



**Bowl**  
12 3/4 oz | L 6 3/4" W 5 1/2" H 2 3/8"  
DBTB4704



**Oval Dish**  
23 3/4 oz | L 12 3/4" W 5 1/2" H 5 1/2"  
DBTB4703



# Marl



With the look of artisan ceramic paired with the durability and strength of melamine, the Marl Collection brings refined beauty to your table. Available in Cream, Steel Blue, and Charcoal Grey, this range combines style and practicality for a timeless dining experience.

## Charcoal Grey



**Rectangle Plate**  
L 14" W 7 1/2" | DBTGY4609  
L 11 3/4" W 6" | DBTGY4608



**Large Shallow Plate**  
D 11" H 1"  
DBTGY4602



**Small Plate**  
D 5 7/8"  
DBTGY4601



**Large Deep Plate**  
D 11" H 1 7/8"  
DBTGY4603



**Large Bowl**  
1 1/2 qt | D 9" H 3 1/8"  
DBTGY4607



**Small Bowl**  
27 oz | D 6 3/4" H 3 1/8"  
DBTGY4606



**Ramekin**  
2 1/4 oz | D 3" H 1 3/8"  
DBTGY4610

See pages 34-35 for Marl Buffet.

D=Diameter L=Length W=Width H=Height • All products are measured at max capacity (oz + qt). • [www.globaltablewarecollective.com](http://www.globaltablewarecollective.com)

## Cream



**Rectangle Plate**  
L 14" W 7 1/2" | DBTCM4609  
L 11 3/4" W 6" | DBTCM4608



**Large Shallow Plate**  
D 11" H 1"  
DBTCM4602



**Small Plate**  
D 5 7/8"  
DBTCM4601



**Large Deep Plate**  
D 11" H 1 7/8"  
DBTCM4603



**Large Bowl**  
1 1/2 qt | D 9" H 3 1/8"  
DBTCM4607



**Small Bowl**  
27 oz | D 6 3/4" H 3 1/8"  
DBTCM4606



**Ramekin**  
2 1/4 oz | D 3" H 1 3/8"  
DBTCM4610

## Steel Blue



**Rectangle Plate**  
L 14" W 7 1/2" | DBTBL4609  
L 11 3/4" W 5 7/8" | DBTBL4608



**Large Shallow Plate**  
D 11" H 1"  
DBTBL4602



**Small Plate**  
D 5 7/8"  
DBTBL4601



**Large Deep Plate**  
D 11" H 1 7/8"  
DBTBL4603



**Large Bowl**  
1 1/2 qt | D 9" H 3 1/8"  
DBTBL4607



**Small Bowl**  
27 oz | D 6 3/4" H 3 1/8"  
DBTBL4606



**Ramekin**  
2 1/4 oz | D 3" H 1 3/8"  
DBTBL4610

# Reef



The Dalebrook Reef Collection is perfect for dips, condiments, bite-sized snacks, and desserts. Small yet stylish, these bowls can be used individually as side dishes or combined for an elegant serving solution. Practicality meets sophistication in every use.



## Black



**Low Dish**  
2 oz | L 5 3/8" W 3 1/4" H 1 1/8"  
DBTB1542M



**Small Dish**  
4 oz | D 3 1/2" H 2 1/2"  
DBTB1541M



**Small Oval Dish**  
2 oz | D 2 5/8" H 1 3/4"  
DBTB1543M

## Grey



**Low Dish**  
2 oz | L 5 3/8" W 3 1/4" H 1 1/8"  
DBTGY1542M



**Small Dish**  
4 oz | D 3 1/2" H 2 1/2"  
DBTGY1541M



**Small Oval Dish**  
2 oz | D 2 5/8" H 1 3/4"  
DBTGY1543M

## Stone



**Small Dish**  
4 oz | D 3 1/2" H 2 1/2"  
DBTST1541M



**Small Oval Dish**  
2 oz | D 2 5/8" H 1 3/4"  
DBTST1543M

# Angled Pot



Angled Dressing Pots offer a sleek and functional way to serve dressings, sauces, and condiments. Available in elegant cream and gray colorways, these pots are as stylish as they are practical.



**Angled Dressing Pot  
(Cream)**

1 qt | D 5 1/8" H 6 1/4"  
DBTCM5576



**Angled Dressing Pot  
(Grey)**

1 qt | D 5 1/8" H 6 1/4"  
DBTGY5576

# Small Bites



Perfect for miniature desserts, snacks, and appetizers, this collection of Small Bites from Dalebrook offers melamine dishes that are ideal for bite-size portions. Both unique & durable, these vessels are great for passing or served at the dining table.



**Appetite Dish**  
LW 4 1/8" H 5/8"  
DBT1641



**Appetite Concave Dish**  
LW 4 1/8" H 5/8"  
DBT1640



**Tulipa Dish**  
1 3/4 oz | L 3 3/8" W 3" H 2"  
DBT1083



**Calla Dish**  
1 1/2 oz | L 4" W 4 1/8" H 2 3/8"  
DBT1081



**Lotus Dish**  
2 1/4 oz | L 3 3/8" W 3" H 2 1/8"  
DBT1091



# Care & Use



## Melamine

### DO

- Melamine products are commercial dishwasher safe.
- Clean as soon as possible to help avoid staining and protein build-up.
- Immediately remove any damaged or chipped melamine products from operational use.
- Melamine can withstand dishwashing temperatures up to 248°F. It should not exceed 160°F with food in it.

### DO NOT

- Do not use in oven, microwaves or expose to direct flame, this can cause cracking and blistering from the heat.
- Do not use with heat lamps, conveyor belts, or plate warmers.
- The use of serrated knives is not recommended on melamine products.
- To avoid chipping and scratching, do not strike melamine products with or on any hard surface while attempting to remove excess food.

### DESTAINING

- Periodically presoak melamine products before dishwashing to prevent staining and to maintain luster.
- For staining, use an oxygen-releasing compound such as Dip-It XP (ECOLAB).
- Sponges or woven plastic pads are recommended for cleaning.
- Do not use harsh or abrasive cleaners, steel wool, or metal pot scouring pads to remove food or stains.

### DISHWASHING

- Refer to a qualified technician to establish a maintenance schedule for your dishwashing system to ensure proper temperatures, chemical levels, and mineral content.
- Only use sanitizers developed for commercial use.
- To avoid chipping and scratching, do not overload your dishwasher rack.
- Do not use chlorine bleach or chlorine-based sanitizing solutions when caring for melamine products.

### Recommended ECOLAB detergents:

- Apex Power Plus (high-temp)
- Apex Ultra (hard water, high-temp)
- Fast Drying Rinse (ideal for plasticware)
- Solid Power XL (high-temp)
- Solid Ultra Klene Plus (low-temp)

### Recommended ECOLAB rinse agents:

- Apex HD Rinse Aid (hard water, high-temp)
- Apex Rinse Additive (high-temp)
- Rinse Dry (high-temp)
- Solid Brilliance (high-temp)
- Ultra Dry (low temp)

### Recommended ECOLAB sanitizers:

- Eco San (low temp)
- Ultra San (low temp)

## Stainless Steel Display Items

- Dishwasher safe.
  - Do not use steel pads, wire brushes or scrapers. Do not use powders, or cleaners that contain chlorides, bromides or iodides.
  - Always rinse thoroughly with fresh water after every cleaning operation
  - Wipe unit dry with a soft cloth to remove water.
  - Always rub in the direction of the steel grain for maximum effectiveness to avoid marring the surface.
  - For smears or fingerprints, wipe with a clean slightly damp cloth. If that doesn't work, use a stainless-steel commercial cleaner.
- 

## Bamboo

To best maintain product finish and condition:

- Do not place near an open flame or grille
  - Products should be stored in a dry location at room temperature.
  - Do not store near heat sources or in humid places.
  - **This product should not be used in the dishwasher, oven or microwave.**
  - Clean with a soft damp cloth or wash with hot soapy water, do not soak in water or wash with harsh detergents
  - Sanitize using an antibacterial spray or food safe liquid sanitizer
  - Dry promptly after cleaning, ensure products are dry before stacking
  - In order to maintain product finish and condition, apply a light coat of mineral oil with a clean dry cloth, to prevent wood from drying and cracking.
  - Do not leave in direct sunlight for long periods of time
- 

## Polycarbonate (PC)

- Dishwasher & freezer safe
  - Items must be carefully placed in the dishwasher while avoiding direct contact with other dishes and drinkware
  - Do not wash with harsh abrasives such as brushes or scrubber pads as this may cause scratches; harsh chemicals including strong acid or alkali cleaning agents should also be avoided
  - Use warm, soapy water or a neutral dishwashing liquid for cleaning
  - Dry naturally or with a soft cloth after hand washing; we recommended using a microfiber cloth to preserve clarity
  - Product can be used normally between temperatures of -30°C and 110°C (-22°F and 230°F)
  - Avoid prolonged exposure to UV light, sunscreen or chlorine
  - Not recommended for use in microwaves or high temperature sterilizers
- 

## Polywicker

- Dishwasher & freezer safe
  - Items must be carefully placed in the dishwasher while avoiding direct contact with other dishes and drinkware
  - Do not wash with harsh abrasives such as brushes or scrubber pads as this may cause scratches; harsh chemicals including strong acid or alkali cleaning agents should also be avoided
  - Use warm, soapy water or a neutral dishwashing liquid for cleaning
  - Do not use in oven, microwaves or expose to direct heat.
- 

## Styrene-Acrylonitrile (SAN)

- Dishwasher safe & freezer safe
- Do not wash with harsh abrasives such as brushes or scrubber pads as this may cause scratches; harsh chemicals including strong acid or alkali cleaning agents should also be avoided
- Product can be used normally between temperatures of -20°C and 90°C (-4°F and 194°F)
- Do not use in oven, microwaves or expose to direct heat.

GLOBAL  
TABLEWARE  
COLLECTIVE

265 West Federal St, Youngstown, OH 44503  
[www.globaltablewarecollective.com](http://www.globaltablewarecollective.com)

**LCGTCDB325**